

Flight Procedures Cover Page	Task Action: Amendment	Task Type: IAP	Estimated Chart Date: 12/26/2024	APWS Task ID: 5A2C222C8A584B179CF4A86C6596C28A	APWS Project ID: C2ACE667D4024819A4725A5F86902E11
Procedure: RNAV (GPS) RWY 3 AMDT 1		Enroute: NO	Specialist: Weston, Daniel		Agreement Number:
Airport ID: PAMH			Airport City: MINCHUMINA		State: AK
Facility ID:	Facility Type:	Flight Inspection Remark Type:			

Procedure Comments:
PENDING AIRNAV DATA USED.

ASSIGNED MAG VAR, PAMH: OLD 12E-NEW 14E.

CONTACT RAKE MCGRAW 405-954-8711.



MINCHUMINA, ALASKA

AL-1224 (FAA)

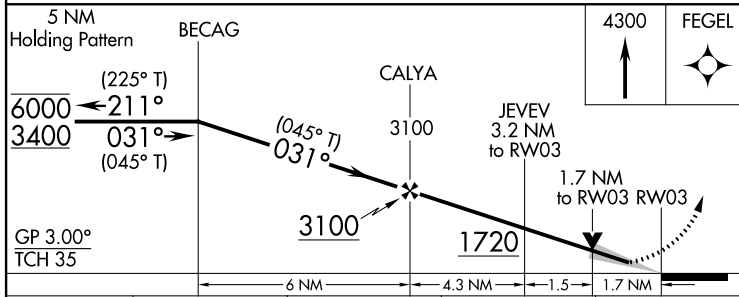
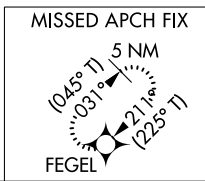
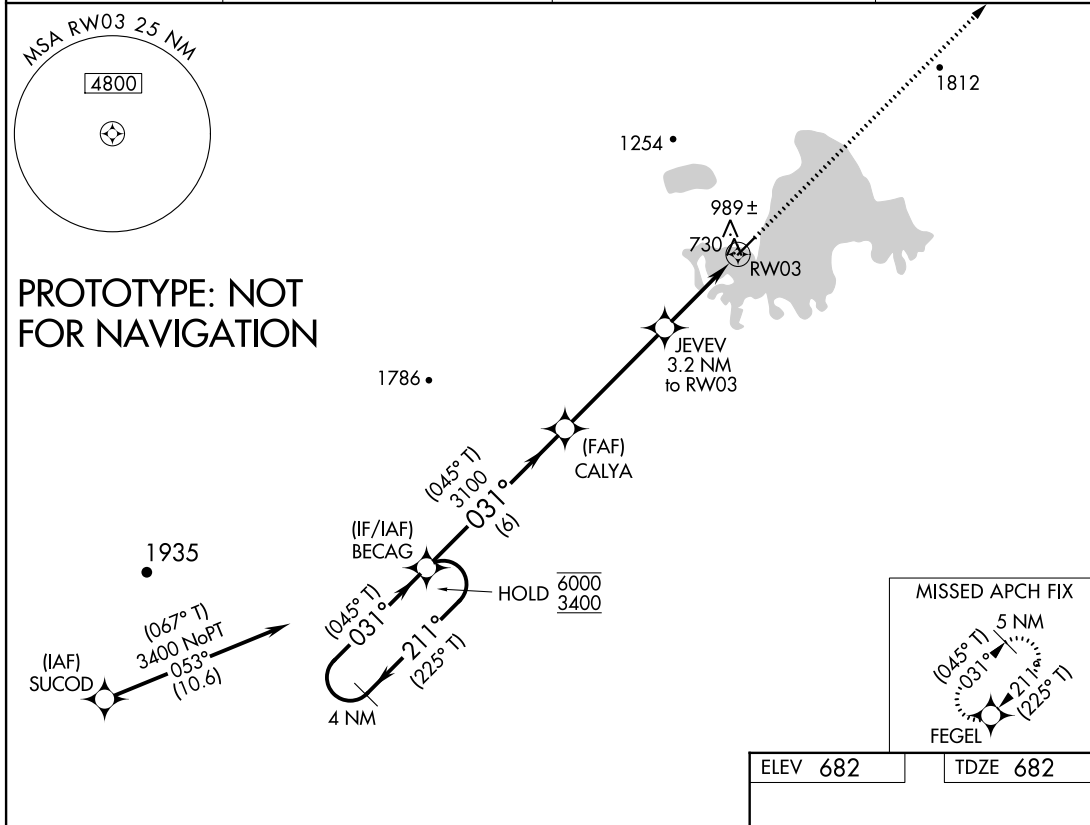
FIG

WAAS CH 77647 W03A	APP CRS 031°	Rwy ldg TDZE Apt Elev	4184 682 682
--	------------------------	-----------------------------	---

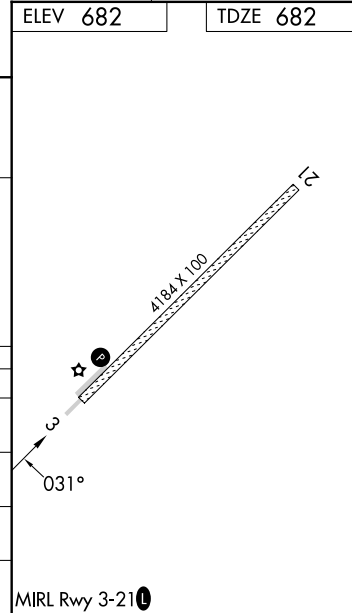
RNAV (GPS) RWY 3

MINCHUMINA (MHM) (P AMH)

RNP APCH - GPS.		MISSED APPROACH: Climb to 4300 direct FEGEL and hold, continue-climb-in-hold.	
Circling NA northwest of Rwy 3-21. -36°C		FAIRBANKS RADIO 122.2	CTAF 122.90
AWOS-3P 135.55	ANCHORAGE CENTER 120.9 319.2		



CATEGORY	A	B	C	D
LPV DA	932-1 250 (300-1)			
LNAV/VNAV DA	1150-1 ³ / ₈ 468 (500-1 ³ / ₈)			
LNAV MDA	1240-1	558 (600-1)	1240-1 ⁵ / ₈	558 (600-1 ⁵ / ₈)
CIRCLING	1240-1	558 (600-1)	1460-2 ¹ / ₄ 778 (800-2 ¹ / ₄)	1460-2 ¹ / ₂ 778 (800-2 ¹ / ₂)



AUTOMATED AL-1224 RNAV (GPS) RWY 3

AK
19 SEP 2024
COMPILER: CG
REVIEWER:
DBL CHKR:
EFF: FIG

MINCHUMINA, ALASKA
Amdt 1 FIG

63°53'N-152°18'W

MINCHUMINA (MHM) (P AMH)
RNAV (GPS) RWY 3

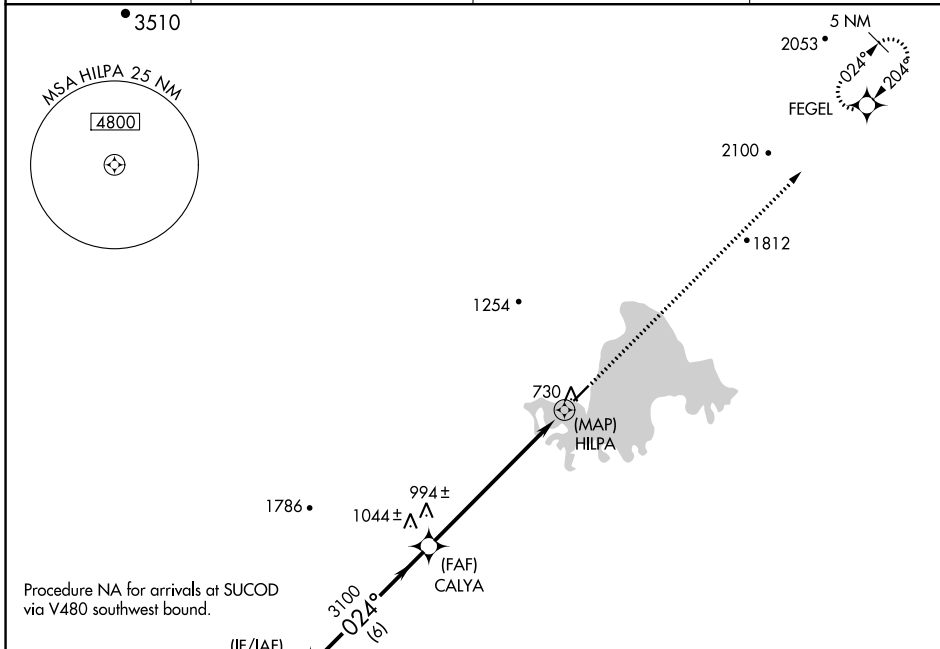
APP CRS 024°	Rwy Idg 4184 TDZE 682 Apt Elev 682
------------------------	---

OLD

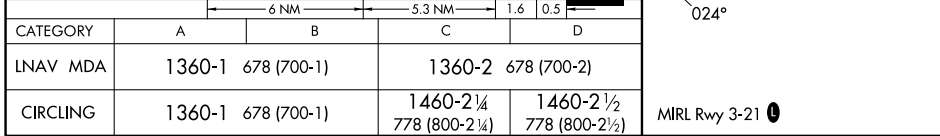
RNAV (GPS) RWY 3
MINCHUMINA (MHM) (P.A.M.H)

37°C DME/DME RNP-0.3 NA. Circling NA west of Rwy 3-21.	MISSED APPROACH: Climb to 4200 direct FEGEL and hold.
--	---

AWOS-3P 135.55	ANCHORAGE CENTER 120.9 319.2	FAIRBANKS RADIO 122.2	CTAF 122.9 0
--------------------------	--	---------------------------------	------------------------

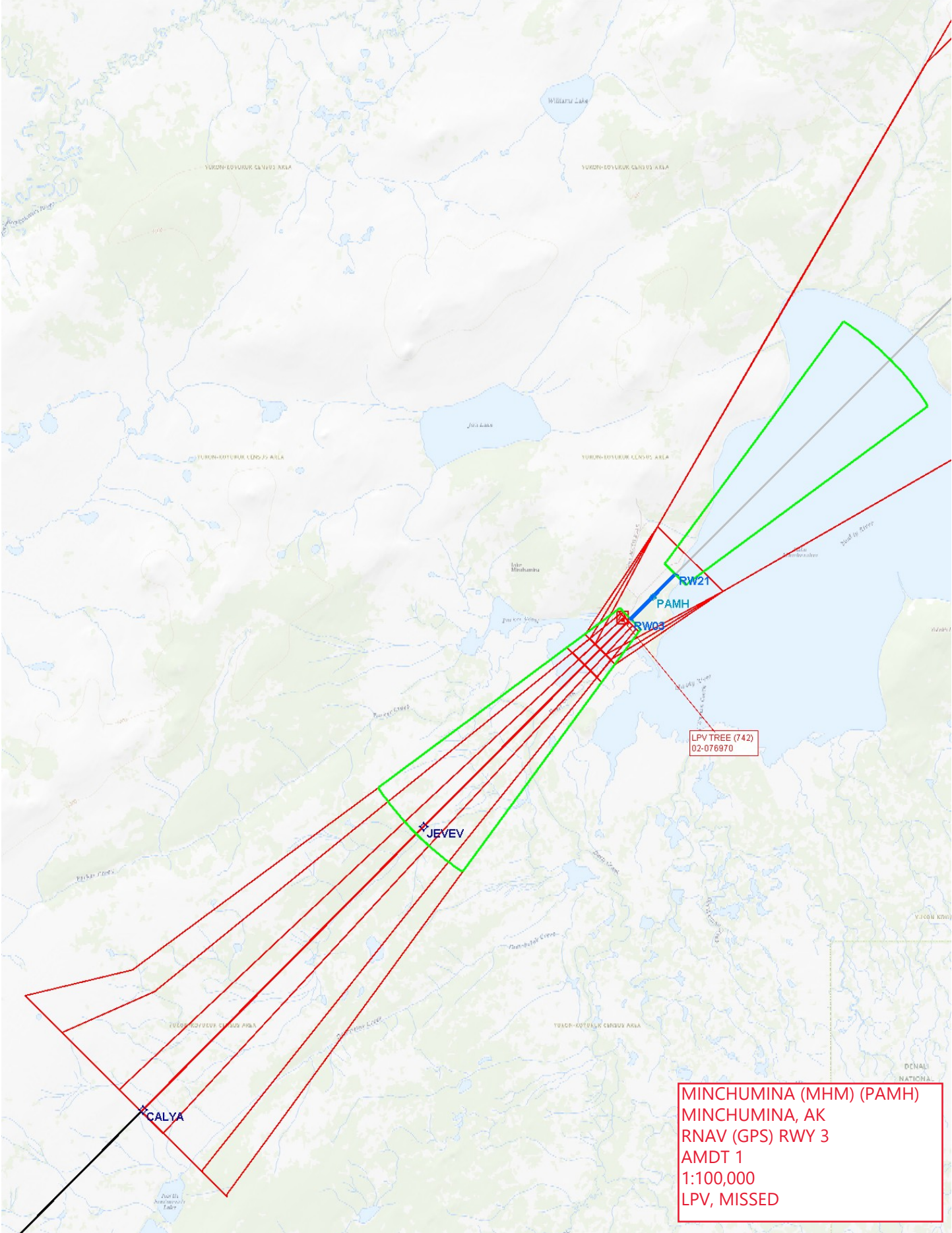
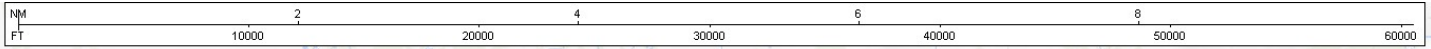


CATEGORY	A	B	C	D
LNAV MDA	1360-1	678 (700-1)	1360-2	678 (700-2)
CIRCLING	1360-1	678 (700-1)	1460-2¼ 778 (800-2¼)	1460-2½ 778 (800-2½)

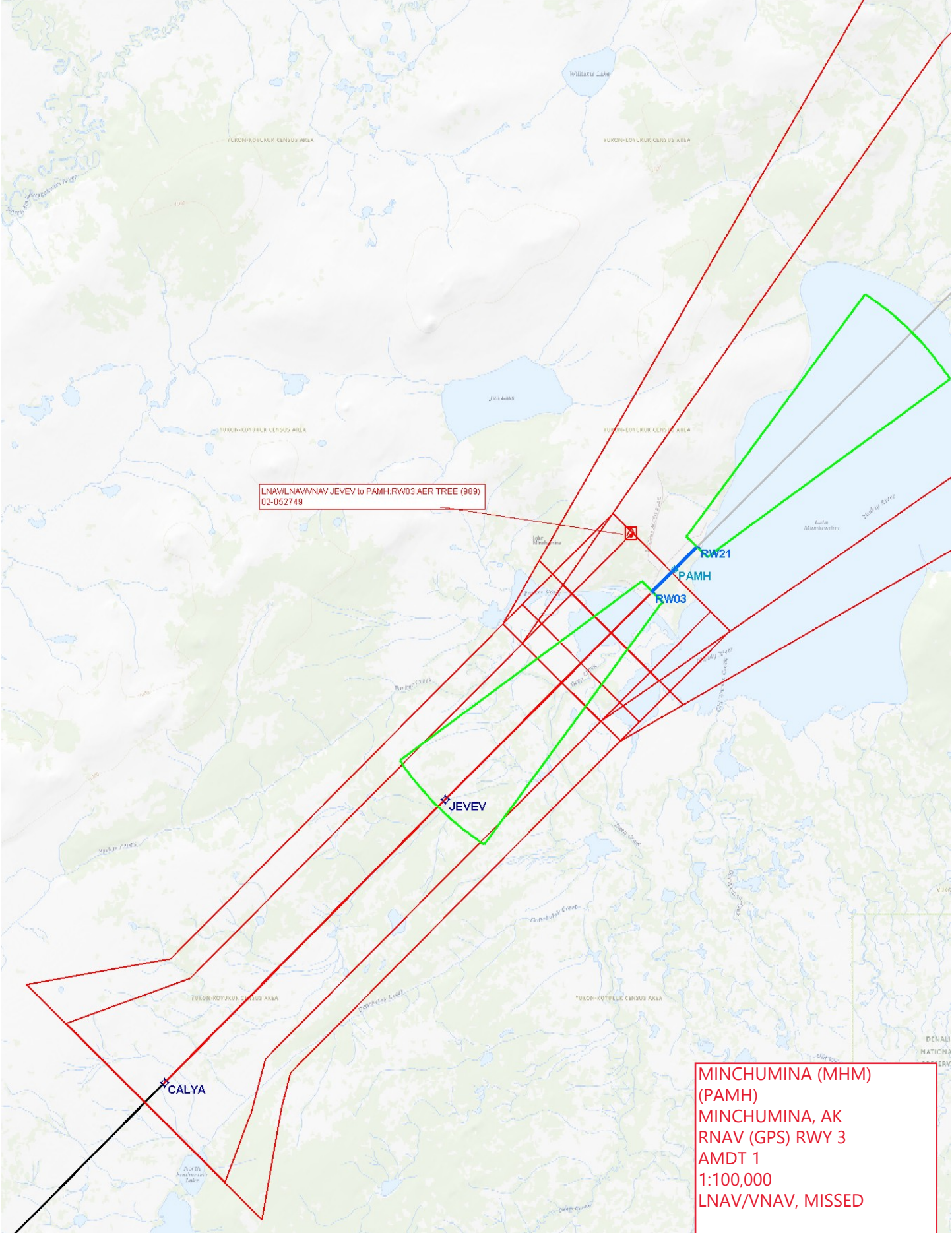
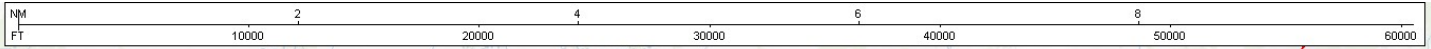


AK, 16 MAY 2024 to 11 JUL 2024

AK, 16 MAY 2024 to 11 JUL 2024

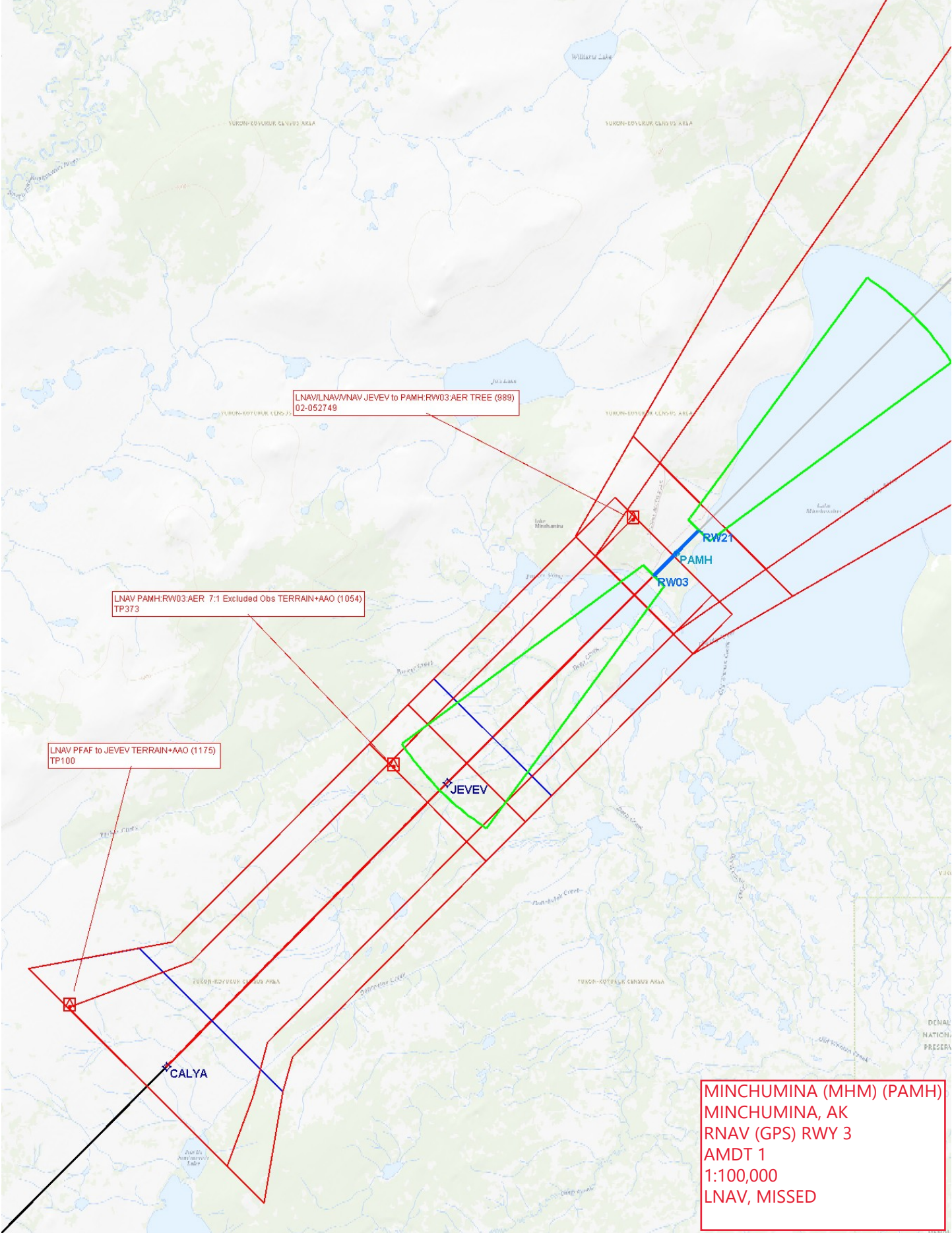
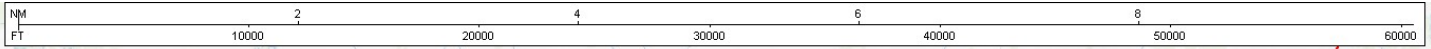


MINCHUMINA (MHM) (PAMH)
MINCHUMINA, AK
RNAV (GPS) RWY 3
AMDT 1
1:100,000
LPV, MISSED



LNAV/NAV VNAV JEVEV to PAMH: RW03: AER TREE (989)
02-052749

MINCHUMINA (MHM)
(PAMH)
MINCHUMINA, AK
RNAV (GPS) RWY 3
AMDT 1
1:100,000
LNAV/VNAV, MISSED

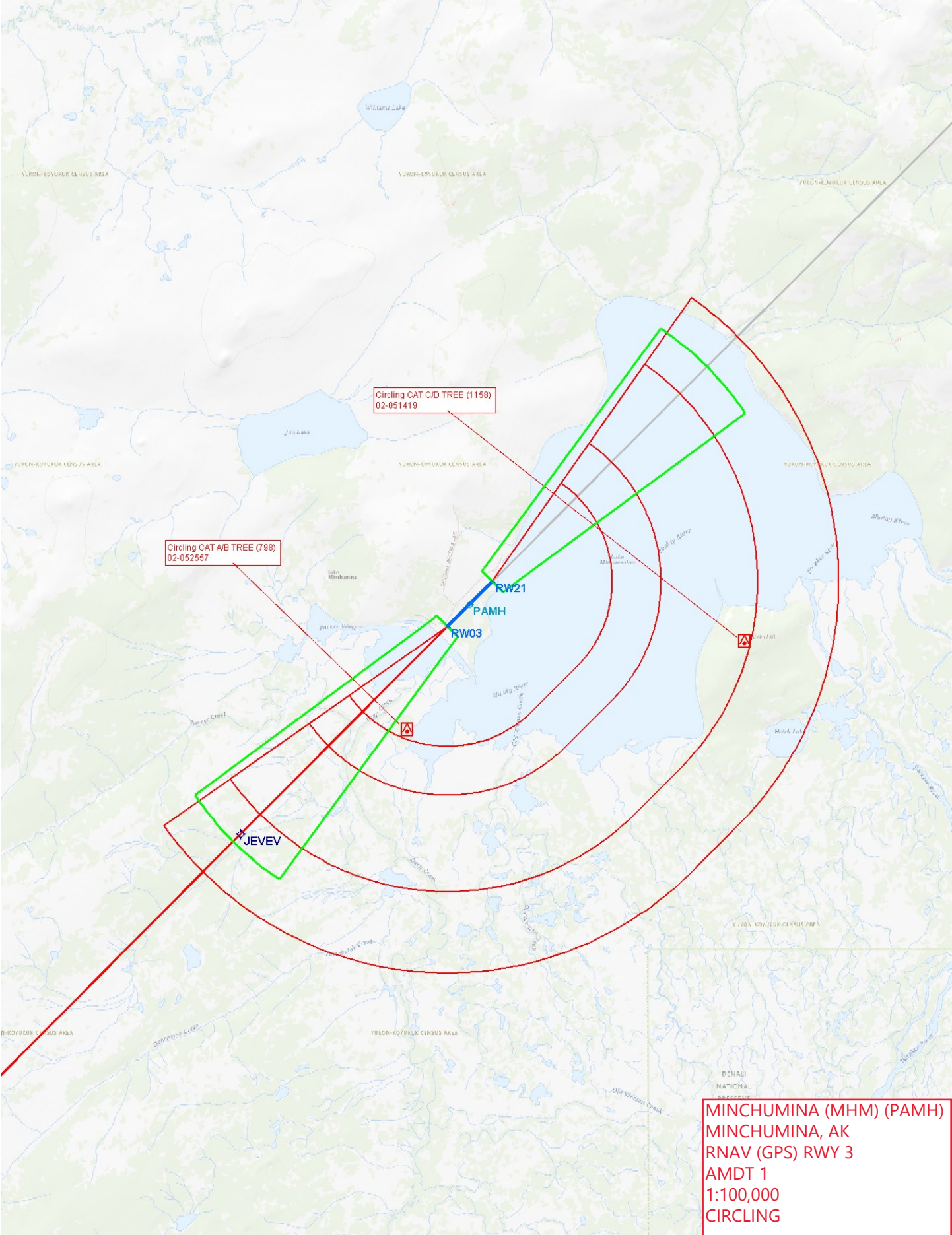
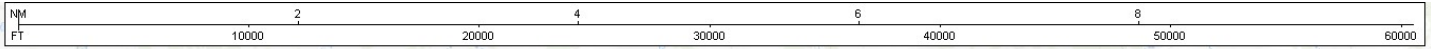


LNAV/LNAV/VNAV JEVEV to PAMH:RW03:AER TREE (989)
02-052749

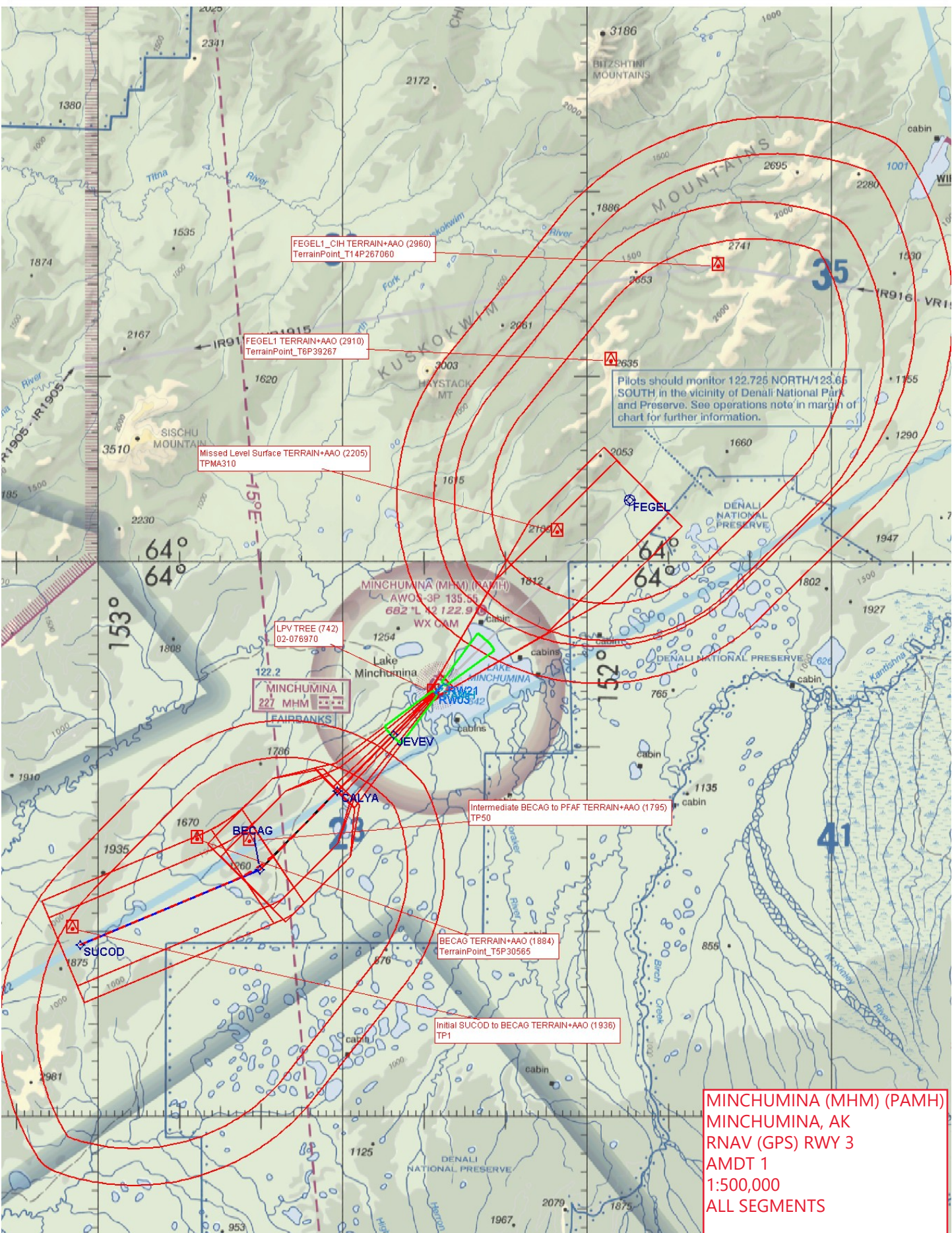
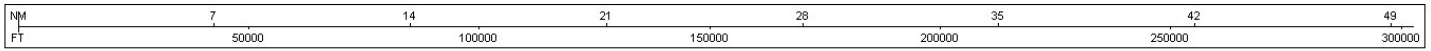
LNAV PAMH:RW03:AER 7:1 Excluded Obs TERRAIN+AAO (1054)
TP373

LNAV PFAF to JEVEV TERRAIN+AAO (1175)
TP100

MINCHUMINA (MHM) (PAMH)
MINCHUMINA, AK
RNAV (GPS) RWY 3
AMDT 1
1:100,000
LNAV, MISSED



MINCHUMINA (MHM) (PAMH)
MINCHUMINA, AK
RNAV (GPS) RWY 3
AMDT 1
1:100,000
CIRCLING



FEHEL1_CIH TERRAIN+AAO (2960)
 TerrainPoint_T14P267060

FEHEL1 TERRAIN+AAO (2910)
 TerrainPoint_T6P39267

Missed Level Surface TERRAIN+AAO (2205)
 TPMA310

LPV TREE (742)
 02-076970

MINCHUMINA
 227 MHM
 FAIRBANKS

Intermediate BECAG to PFAF TERRAIN+AAO (1795)
 TP50

BECAG TERRAIN+AAO (1884)
 TerrainPoint_T5P30565

Initial SUCOD to BECAG TERRAIN+AAO (1936)
 TP1

Pilots should monitor 122.725 NORTH/123.65 SOUTH in the vicinity of Denali National Park and Preserve. See operations note in margin of chart for further information.

MINCHUMINA (MHM) (PAMH)
 MINCHUMINA, AK
 RNAV (GPS) RWY 3
 AMDT 1
 1:500,000
 ALL SEGMENTS



Federal Aviation Administration

Initial Development Notification for AIRNAV Pending Records

To: Julie Morgan, Manager Aeronautical Data Team, AJV-A31

From: Marlon Robinson, Manager Instrument Flight Procedures Projects Team, AJV-A45

Subject: **ACTION:** Request for Pending Records **PAMH__MINCHUMINA, , AK US**

The Magnetic Variation (MV) data for the airport(s) and/or facility(s) listed will be revised effective concurrent with the publication of the procedure(s) listed below. Estimated Chart Date: 12/26/2024

Current/Assigned MV New MV

ECD	Airport ID	Procedure Name	AMDT #	Task Report Type Selections
12/26/2024	PAMH	HEMRO ONE DEPARTURE (RNAV) (OBSTACLE) ORIG AK		NPA CANX PROGRAM MAGVAR
12/26/2024	PAMH	MINCHUMINA AK PAMH AMDT 3		NPA CANX PROGRAM MAGVAR
12/26/2024	PAMH	RNAV (GPS) RWY 21 AMDT 1		NPA CANX PROGRAM MAGVAR
12/26/2024	PAMH	RNAV (GPS) RWY 3 AMDT 1		NPA CANX PROGRAM MAGVAR

NO RUNWAY NUMBER CHANGES

IF you have any questions please notify: Rake.McGraw@faa.gov

Processed Friday, May 31, 2024