

Flight Procedures Cover Page	Task Action: FLIGHT CHECK	Task Type: IAP	Estimated Chart Date: 07/09/2026	APWS Task ID: 5A5CE7FD82FD4D359D48DA343426A7ED	APWS Project ID: 5FC9424F8C274CCEA82885D61A09EC3E
Procedure: ILS OR LOC RWY 8R AMDT 7		Enroute: YES	Specialist: Tyler, George		Agreement Number:
Airport ID: KGRR			Airport City: GRAND RAPIDS		State: MI
Facility ID: CYZ	Facility Type: ILS	Flight Inspection Remark Type: New FC Slot			

Procedure Comments:

ACTIVE AIRNAV DATA UTILIZED FOR KGRR AND RWYS.

PENDING AIRNAV DATA UTILIZED FOR CYZ ILS.

ACTIVE AIRNAV DATA UTILIZED FOR PMM VOR/DME.

ACTIVE AIRNAV DATA UTILIZED FOR VIO VOR/DME.

VOR MON SUPPORTING PMM DECOMMISSIONING.

ENROUTE DUE TO JAKES PMM 8260-2.

CANCELS NOTAM FDC 6/3920.

HIL REMOVED, PT ADDED TO MAINTAIN MON SAFE STATUS.

CONTACT CASEY HILL, AJV-A421, 405-954-0624.

03/04/26: THIS IS AN UPDATED COPY OF THE FORM DEVELOPED ON 01/13/26.

1. ADDITIONAL FLIGHT DATA: REMOVED "CHART 2700 PRIOR TO GOKUW IN PROFILE".

2. NOTES: REMOVED "(*NA WHEN USING BIV ALTIMETER SETTING)" FROM "CHART NOTE: *RVR 1800 AUTHORIZED WITH THE USE OF FD OR AP OR HUD TO DA (NA WHEN USING BIV ALTIMETER SETTING)", MOVED TO PART C.

4/29/2026: THIS IS A CORRECTED COPY OF THE FORM APPROVED ON 4/09/2026.

1. PATTERNS: ADDED PAT 3 BACK WITH ALL ASSOCIATED INFORMATION (PREVIOUSLY REMOVED PAT 2) FOR 9D9 CHART SLIP.

2. FIX USE: ADDED IAP VOR RWY 12 AT 9D9.

QUALITY
9
CHECKED
BEGUE

QUALITY
34
CHECKED

QUALITY
34
CHECKED

QUALITY
46
CHECKED

LOC I-CYZ 108.3	APP CRS 087°	Rwy Ldg 10001	TDZE 794	Apt Elev 794
---------------------------	------------------------	-------------------------	--------------------	------------------------

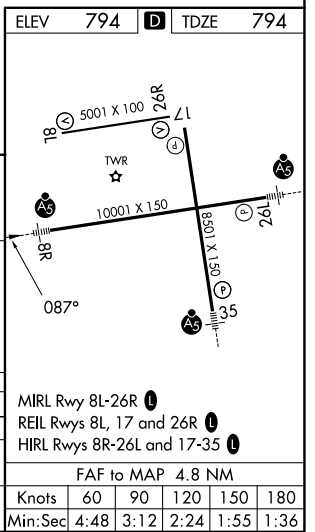
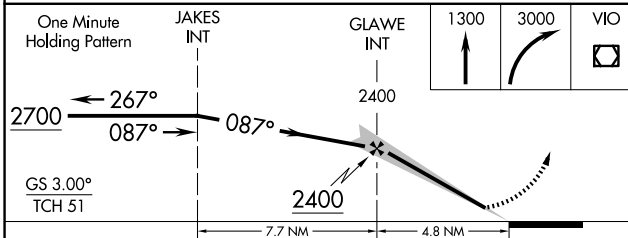
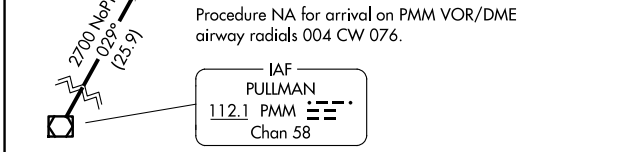
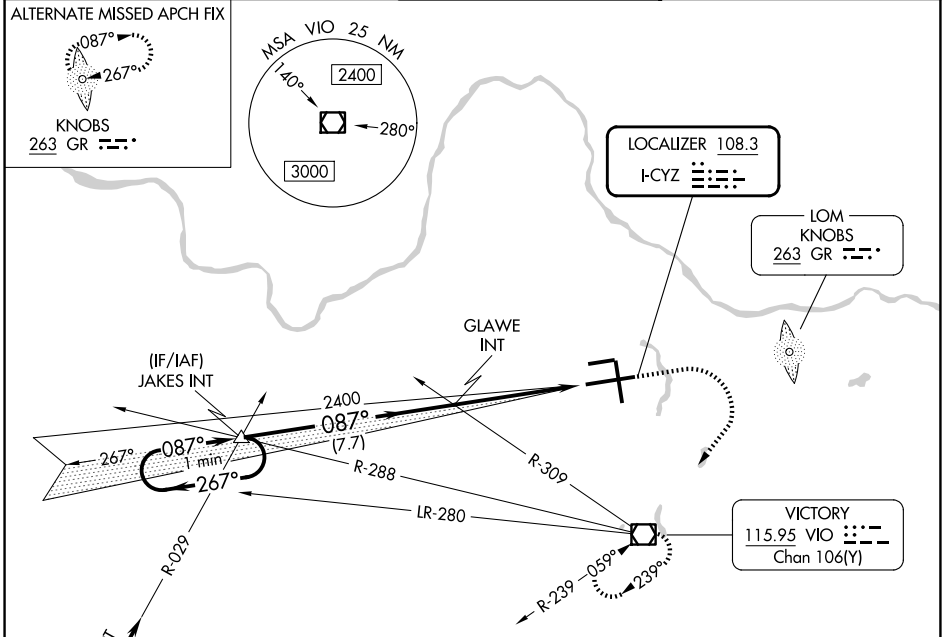
OLD

ILS or LOC RWY 8R

GERALD R FORD INTL (G.R.R)

<p>▽ *RVR 1800 authorized with the use of FD or AP or HUD to DA.</p>	<p>MALSR</p>	<p>MISSED APPROACH: Climb to 1300 then climbing right turn to 3000 direct VIO VOR/DME and hold.</p>
---	--------------	---

<p>ATIS 118.725</p>	<p>GREAT LAKES APP CON★ 128.4 257.6</p>	<p>GRAND RAPIDS TOWER★ 135.65 (CTAF) 339.8</p>	<p>GND CON 121.8</p>	<p>UNICOM 122.95</p>
--------------------------------	--	---	---------------------------------	---------------------------------



CATEGORY	A	B	C	D
S-ILS 8R	*994/24		200 (200-1/2)	
S-LOC 8R	1240/24	446 (500-1/2)	1240/45	446 (500-7/8)
CIRCLING	1260-1	466 (500-1)	1340-1 1/2 546 (600-1 1/2)	1360-2 566 (600-2)

EC-1, 27 NOV 2025 to 25 DEC 2025

EC-1, 27 NOV 2025 to 25 DEC 2025