

Flight Procedures Cover Page	Task Action: FLIGHT CHECK	Task Type: IAP	Estimated Chart Date: 03/19/2026	APWS Task ID: 5B77BBD1B86B40BBAC63DC0F30A5715C	APWS Project ID: 1C3D76D2DFD44266B14081C1A48F0D93
Procedure: ILS OR LOC RWY 5 AMDT 27		Enroute: NO	Specialist: Heiderstadt, Nicholas		Agreement Number:
Airport ID: KORF			Airport City: NORFOLK		State: VA
Facility ID: ORF	Facility Type: ILS	Flight Inspection Remark Type: New FC Slot			

Procedure Comments:  
 CHANGED MISSED APCH AND ASSOCIATED HOLD FOR CCV VOR MON.  
 ACTIVE ILS AIRNAV DATA, PENDING AIRPORT AIRNAV DATA USED  
 AMEND FDC NOTAM 4/0345 UPON PUBLICATION  
 CONTACT ROB HAMILTON 405-954-4608

QUALITY  
21  
CHECKED

QUALITY  
41  
CHECKED




LOC/DME I-ORF <b>109.1</b> Chan 28	APP CRS <b>047°</b>	Rwy Ldg TDZE <b>26</b> Apt Elev <b>27</b>	<b>7809</b>
--	------------------------	---	-------------

**OLD**

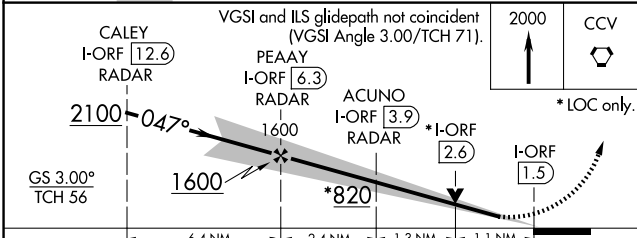
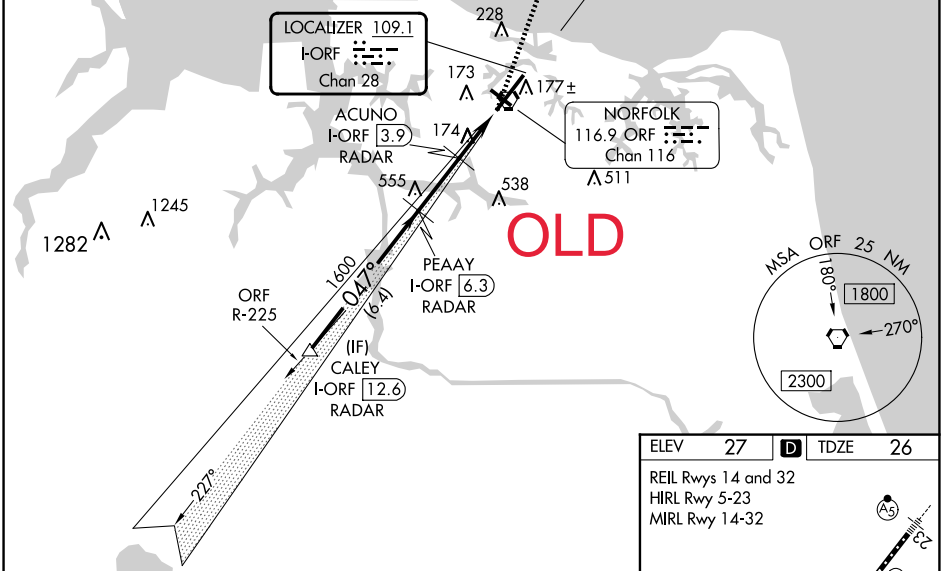
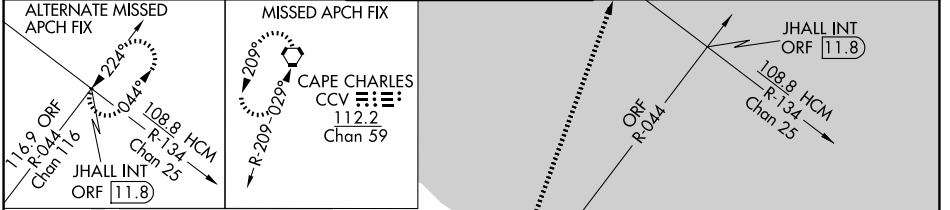
**ILS or LOC RWY 5**  
NORFOLK INTL (ORF)

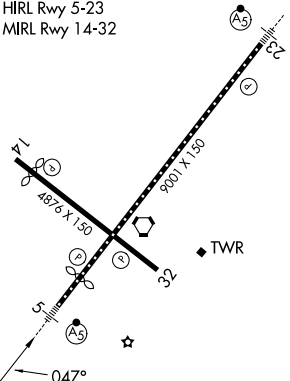
DME or RADAR required. RADAR required for procedure entry.

Autopilot coupled approach NA below 1180. For inop ALS, increase S-LOC 5 Cat C and D visibility to RVR 6000. \*\* RVR 1800 authorized with use of FD or AP or HUD to DA.

MALSR  MISSED APPROACH: Climb to 2000 direct CCV VORTAC and hold.

ATIS <b>127.15</b>	NORFOLK APP CON <b>118.9 353.7</b>	NORFOLK TOWER <b>120.8 257.8</b>	GND CON <b>121.9</b>	CLNC DEL <b>118.5</b>
-----------------------	---------------------------------------	-------------------------------------	-------------------------	--------------------------



ELEV 27	TDZE 26
REIL Rwy 14 and 32 HIRL Rwy 5-23 MIRL Rwy 14-32	
	
FAF to MAP 4.8 NM	
Knots	60 90 120 150 180
Min:Sec	4:48 3:12 2:24 1:55 1:36

CATEGORY	A	B	C	D
S-ILS 5**	226/24 200 (200-½)			
S-LOC 5	440/24	414 (500-½)	440/40	414 (500-¾)
CIRCLING	480-1 453 (500-1)	540-1 513 (600-1)	540-1½ 513 (600-1½)	900-2¾ 873 (900-2¾)

