

| | | |
|--|------------------------|---|
| WAAS CH 56340 W17A | APP CRS 173° | Rwy Ldg TDZE 1302 Apt Elev 1302 |
|--|------------------------|---|

RNAV (GPS) RWY 17

ABERDEEN RGNL (ABR)

RNP APCH - GPS.

▼ For uncompensated Baro-VNAV systems, LNAV/VNAV
▲ NA below -22°C or above 54°C.

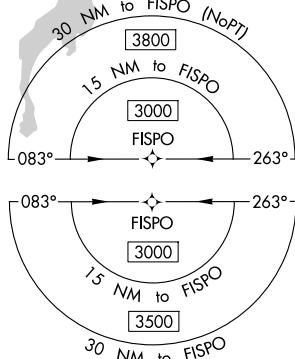
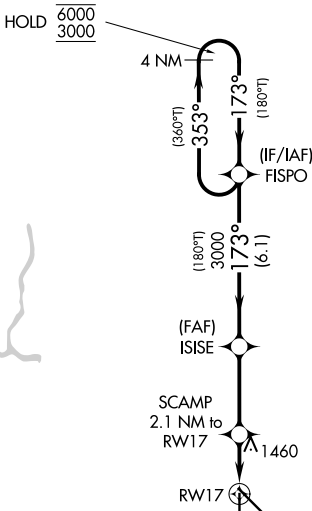
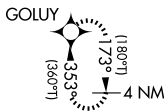
MISSED APPROACH: Climb to 3000 direct GOLUY and hold.

ASOS
125.875

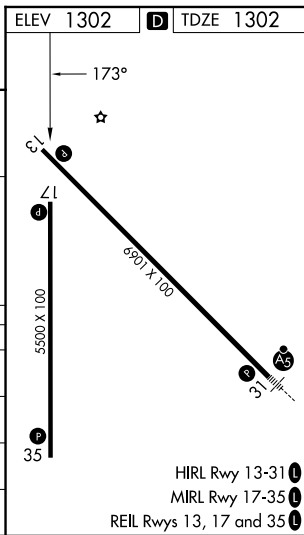
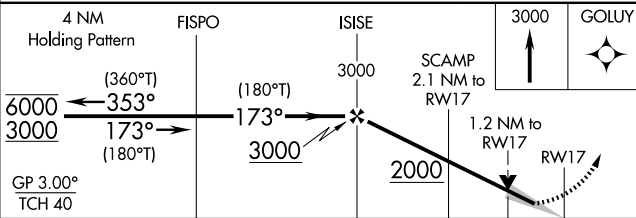
MINNEAPOLIS CENTER
120.6 371.9

UNICOM
122.7 (CTAF) 1

MISSED APCH FIX



**PROTOTYPE-
NOT FOR NAVIGATION**



| CATEGORY | A | B | C | D |
|--------------|-----------------------|-----------------------|-----------------------|--|
| LPV DA | | 1502-1 | 200 (200-1) | |
| LNAV/VNAV DA | | 1624-1 | 322 (400-1) | |
| LNAV MDA | 1720-1 | 418 (500-1) | 1720-1 $\frac{1}{8}$ | 418 (500-1 $\frac{1}{8}$) |
| CIRCLING | 1760-1 458 (500-1) | 1860-1 558 (600-1) | 1980-2 678 (700-2) | 2160-2 $\frac{3}{4}$ 858 (900-2 $\frac{3}{4}$) |