

Flight Procedures Cover Page	Task Action: FLIGHT CHECK	Task Type: IAP	Estimated Chart Date: 09/10/2020	APWS Task ID: 5BA930EDF8354677B321FD8DE2A4C0C6	APWS Project ID: 9D6AE71C752E4345A533B4E78F5ECEA2
Procedure: ILS OR LOC RWY 2 AMDT 6A		Enroute: NO	Specialist: Jackson, Frank		Agreement Number:
Airport ID: KOFK	Airport Name: NORFOLK RGNL/KARL STEFAN MEMORIAL FLD		Airport City: NORFOLK		State: NE
Facility ID:	Facility Type:	Flight Inspection Remark Type: Hold FC Slot			

Procedure Comments:

PENDING DATA USED FOR KOFK AIRPORT AND RUNWAYS

PENDING DATA USED FOR OFK VOR/DME

RWY renumbering from 1/19 to 2/20

06/05/2020: THIS IS AN UPDATED COPY OF THE FORMS (8260-2) DEVELOPED ON 02/05/2020.

CARZY OM: UPDATED REASONS FOR REVISION: FROM FIX MAKE-UP - CHANGED FAC 2 MAG TRUE FROM 191.41/199.41 TO 191.40/199.40 AND DIST FROM FAC FEET FROM 41598 TO 41599 TO CHANGED FAC 2 MAG TRUE FROM 191.41/199.41 TO 194.40/199.40 AND DIST FROM FAC FEET FROM 41598 TO 41599.

COLUMBUS VOR/DME: UPDATED FIX USE, DELETED K93Y VOR/DME RWY 32.

SLAYS: UPDATED REASONS FOR REVISION: FROM CHANGED FAC 1 MAG/TRUE FROM 191.41/199.41 TO 191.40/199.40 DUE TO NEW SURVEY DATA TO CHANGED FAC 1 MAG/TRUE FROM 191.41/199.41 TO 194.40/199.40 DUE TO NEW SURVEY DATA.

WUBMO: UPDATED REASONS FOR REVISION: FROM FIX MAKE-UP - CHANGED FAC 1 MAG TRUE FROM 191.41/199.41 TO 191.40/199.40 TO FIX MAKE-UP - CHANGED FAC 1 MAG TRUE FROM 191.41/199.41 TO 194.40/199.40.

CONTACT: GEORGE DAVIS 405-954-9960 OR DON LANIER 405-954-8242

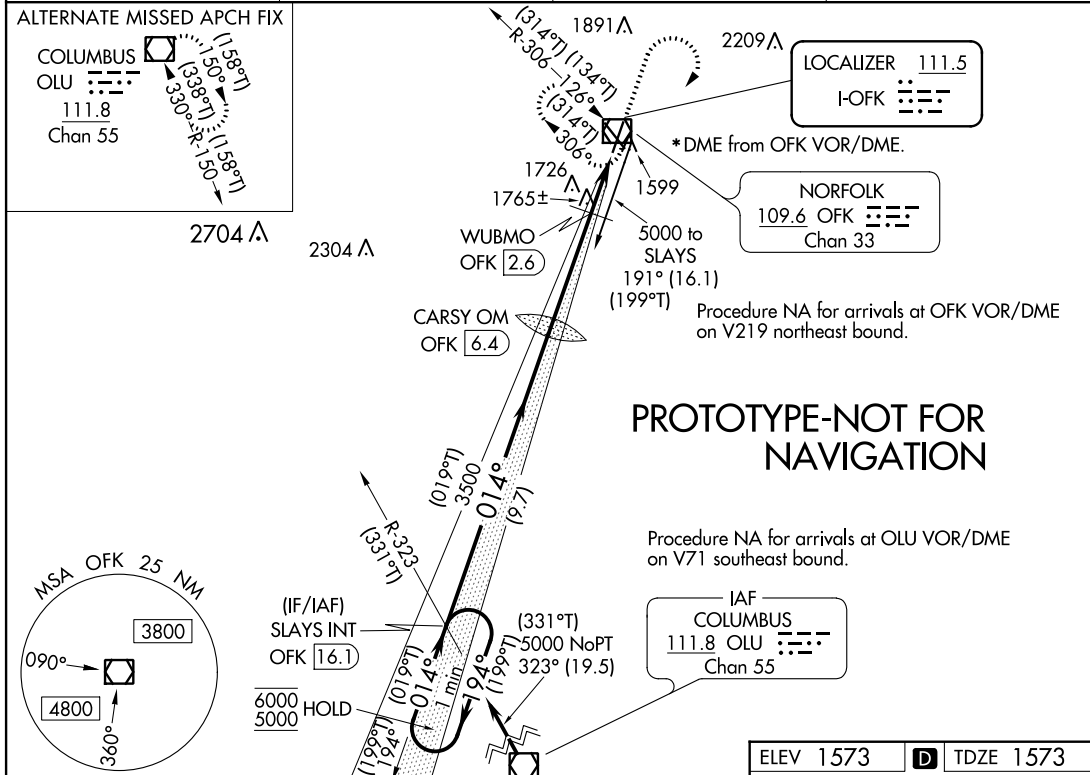


LOC I-OFK 111.5	APP CRS 014°	Rwy Idg TDZE Apt Elev	5801 1573 1573
---------------------------	------------------------	-----------------------------	---

ILS or LOC RWY 2

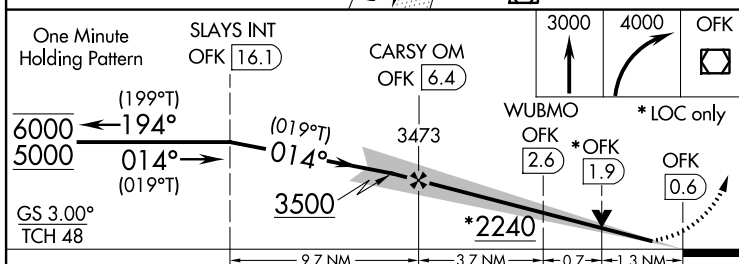
NORFOLK RGNL/KARL STEFAN MEMORIAL FLD (OFK)

<p>ASOS 119.025</p>		<p>MINNEAPOLIS CENTER 125.025 235.625</p>		<p>COLUMBUS RADIO 122.15</p>		<p>UNICOM 122.7 (CTAF)</p>	
----------------------------	--	--	--	-------------------------------------	--	-----------------------------------	--

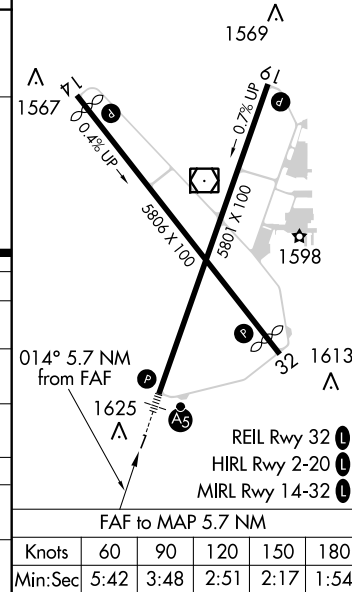


PROTOTYPE-NOT FOR NAVIGATION

ELEV 1573	D	TDZE 1573
-----------	----------	-----------



CATEGORY	A	B	C	D
S-ILS 2	1773-1/2 200 (200-1/2)			
S-LOC 2	2240-1/2 667 (700-1/2)		2240-1/2 667 (700-1/2)	
C CIRCLING	2240-1 667 (700-1)		2260-2 687 (700-2)	2360-2 1/2 787 (800-2 1/2)
WUBMO FIX MINIMUMS (DME REQUIRED)				
S-LOC 2	2020-1/2 447 (500-1/2)		2020-7/8 447 (500-7/8)	
C CIRCLING	2080-1 507 (600-1)	2100-1 527 (600-1)	2260-2 687 (700-2)	2360-2 1/2 787 (800-2 1/2)



FAF to MAP 5.7 NM					
Knots	60	90	120	150	180
Min:Sec	5:42	3:48	2:51	2:17	1:54

AUTOMATED AL-974 ILS or LOC RWY 2

NC-2
2-11-20
COMPILER: HD
REVIEWER:
DBL CHKR:
EFF DATE: FIG

ILS or LOC RWY 2

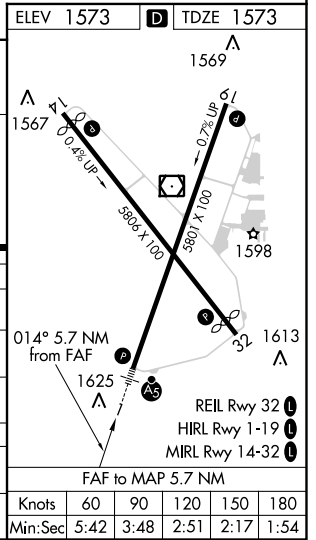
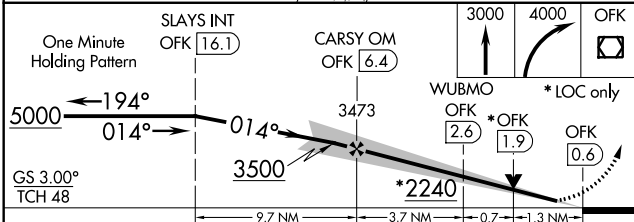
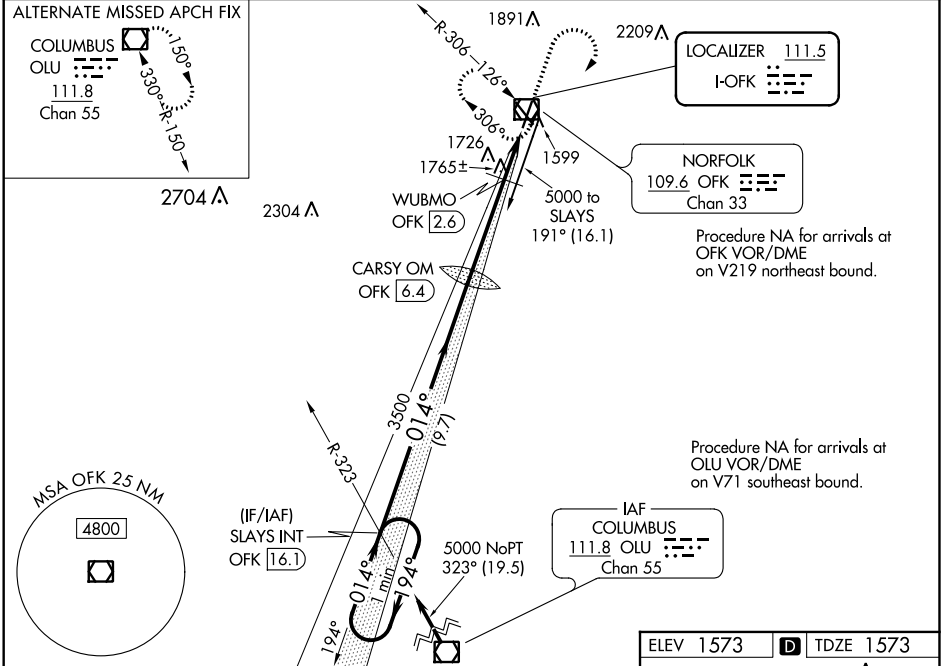
LOC I-OFK 111.5	APP CRS 014°	Rwy Idg 5801	TDZE 1573
		Apt Elev 1573	

ILS or LOC RWY 1

NORFOLK RGNL/KARL STEFAN MEMORIAL FIELD (OFK)

*DME from OFK VOR/DME.	MALS	MISSED APPROACH: Climb to 3000 then climbing right turn to 4000 direct OFK VOR/DME and hold.	

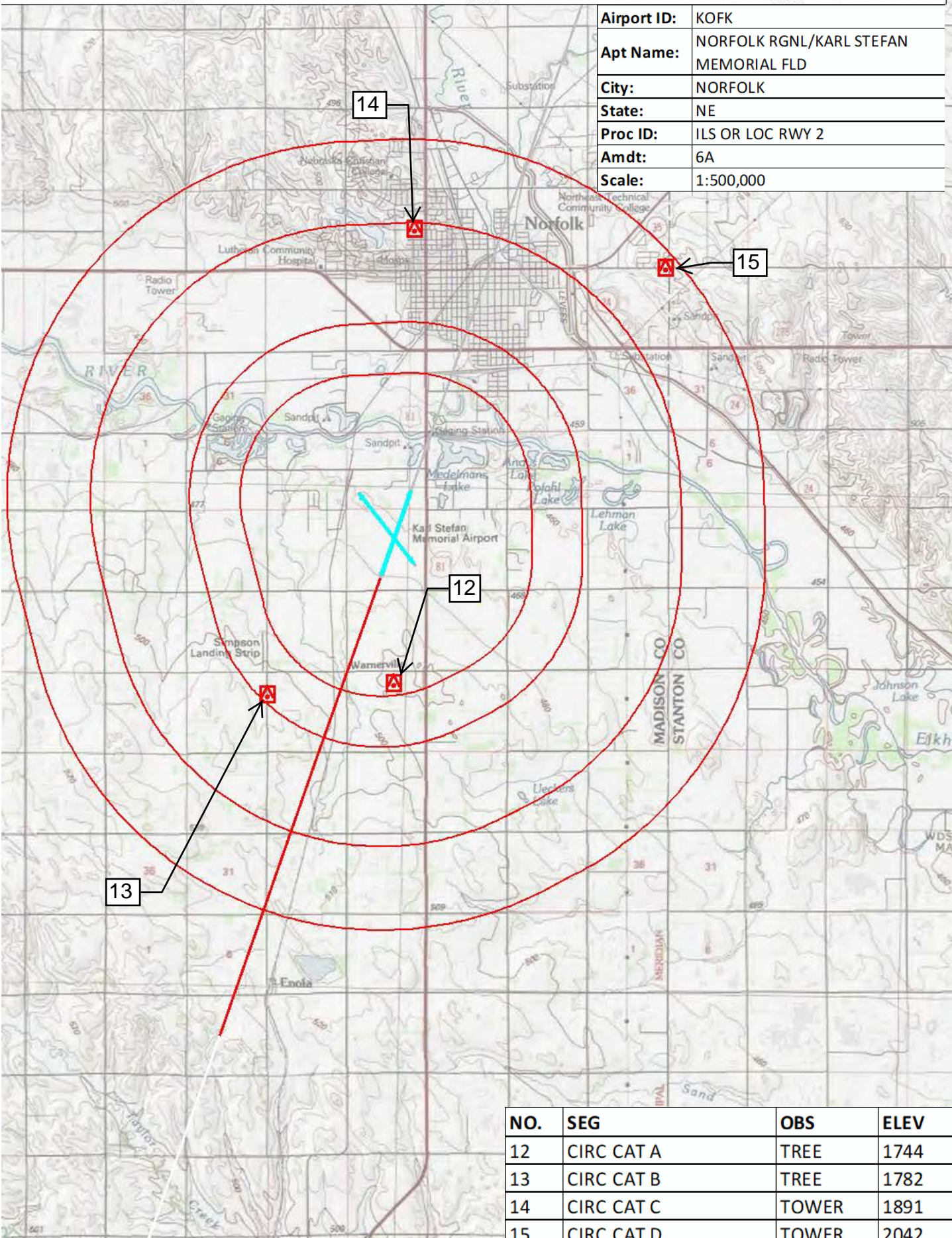
ASOS 119.025	MINNEAPOLIS CENTER 125.025 235.625	COLUMBUS RADIO 122.15	UNICOM 122.7 (CTAF)
------------------------	--	---------------------------------	-------------------------------



CATEGORY	A	B	C	D
S-ILS 1	1773-½ 200 (200-½)			
S-LOC 1	2240-½	667 (700-½)	2240-1¼	667 (700-1¼)
CIRCLING	2240-1	667 (700-1)	2260-2	2360-2½
			687 (700-2)	787 (800-2½)
WUBMO FIX MINIMUMS*				
S-LOC 1	2020-½	447 (500-½)	2020-7/8	447 (500-7/8)
CIRCLING	2080-1	507 (600-1)	2260-2	2360-2½
			687 (700-2)	787 (800-2½)

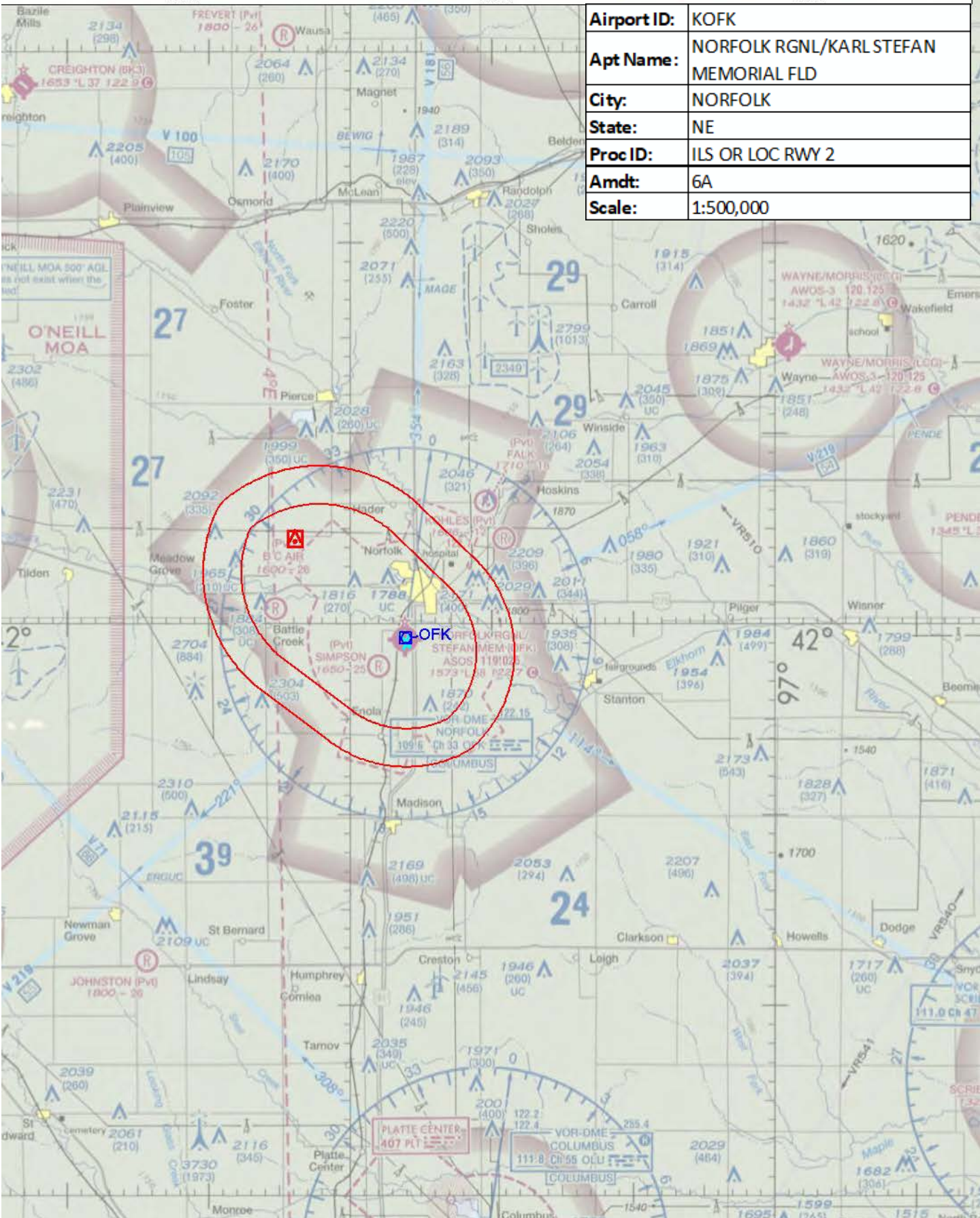
NC-2, 05 DEC 2019 to 02 JAN 2020

NC-2, 05 DEC 2019 to 02 JAN 2020



Airport ID:	KOFK
Apt Name:	NORFOLK RGNL/KARL STEFAN MEMORIAL FLD
City:	NORFOLK
State:	NE
Proc ID:	ILS OR LOC RWY 2
Amdt:	6A
Scale:	1:500,000

NO.	SEG	OBS	ELEV
12	CIRC CAT A	TREE	1744
13	CIRC CAT B	TREE	1782
14	CIRC CAT C	TOWER	1891
15	CIRC CAT D	TOWER	2042



Airport ID:	KOFK
Apt Name:	NORFOLK RGNL/KARL STEFAN MEMORIAL FLD
City:	NORFOLK
State:	NE
Proc ID:	ILS OR LOC RWY 2
Amdt:	6A
Scale:	1:500,000

NO.	SEG	OBS	ELEV
5	MA - HOLDING	AAO	2000