

FEDERAL AVIATION ADMINISTRATION
FLIGHT STANDARDS SERVICE
STANDARD TERMINAL ARRIVAL (STAR)

Bearings, headings, courses, tracks and radials are magnetic. Elevations and altitudes are in feet, MSL. Altitudes are minimum altitudes unless otherwise indicated.
Ceilings are in feet above airport elevation. Distances are in nautical miles. Visibilities are in statute miles or feet RVR unless otherwise indicated.

Arrival Name	Number	STAR Computer Code	Superseded Number	Dated	Effective Date
BLUEM (RNAV)	FIVE	BLUEM.BLUEM5	FOUR	04/22/2021	

TRANSITION ROUTES:

Transition Name	Transition Computer Codes	From FIX/NAVAID	To FIX/NAVAID	Course	Distance	MEA	MOCA	MAA	Crossing Altitudes / Fixes
HELLO	HELLO.BLUEM5	HELLO	HELLO						
			OOPEE	003.92	43.08	8000	3000		AT/ABOVE FL240
			LAZYY	004.00	28.15	8000	2800		AT/ABOVE 16000
			BLUEM	004.41	13.00	6000	2600		AT/ABOVE 10000
KICKR	KICKR.BLUEM5	KICKR	KICKR						
			OOPEE	334.16	48.18	8000	3000		AT/ABOVE FL240
			LAZYY	004.00	28.15	8000	2800		AT/ABOVE 16000
			BLUEM	004.41	13.00	6000	2600		AT/ABOVE 10000
LAZYY	LAZYY.BLUEM5	LAZYY	LAZYY						AT/ABOVE 16000
			BLUEM	004.41	13.00	6000	2600		AT/ABOVE 10000
MNOSO	MNOSO.BLUEM5	MNOSO	MNOSO						
			KICKR	334.57	26.13	8000	3000		
			OOPEE	334.16	48.18	8000	3000		AT/ABOVE FL240
			LAZYY	004.00	28.15	8000	2800		AT/ABOVE 16000
			BLUEM	004.41	13.00	6000	2600		AT/ABOVE 10000
OOPEE	OOPEE.BLUEM5	OOPEE	OOPEE						AT/ABOVE FL240
			LAZYY	004.00	28.15	8000	2800		AT/ABOVE 16000
			BLUEM	004.41	13.00	6000	2600		AT/ABOVE 10000

ARRIVAL ROUTE DESCRIPTION:

FROM BLUEM ON TRACK 003.76/6.19 TO CROSS HHAMR AT OR ABOVE 10000 AND AT 280 KIAS, THEN ON TRACK 003.23/5.42 TO FARBO.

LANDING RWY 4, 12R, 17, 22: FROM FARBO ON TRACK 359.99/13.24 TO CROSS ELLKO AT OR ABOVE 10000 AND AT 250 KIAS, THEN ON TRACK 354.90/5.82 TO CROSS SAVVG AT 9000, THEN ON TRACK 328.34/8.02 TO CROSS GREAK AT 8000 AND AT 230 KIAS, THEN ON TRACK 301.32/2.25 TO CROSS TIETN AT 8000 AND AT 230 KIAS, THEN ON TRACK 301.32. EXPECT RADAR VECTORS TO FINAL APPROACH COURSE.

LANDING RWY 30L/R: FROM FARBO ON TRACK 012.96/3.49 TO CROSS NOFLD BETWEEN 8000 AND 9000 AND AT 250 KIAS, THEN ON TRACK 035.48/12.92 TO CROSS CANDD AT 7000 AND AT 230 KIAS, THEN ON TRACK 035.87/1.63 TO CROSS HAPT N AT 7000 AND AT 210 KIAS. EXPECT RNAV (RNP), RNAV (GPS), OR ILS RWY 30L APPROACH OR RADAR VECTORS TO RWY 30L/R FINAL APPROACH COURSE.

LANDING RWY 12L: FROM FARBO ON TRACK 359.99/13.24 TO CROSS ELLKO AT OR ABOVE 10000 AND AT 250 KIAS, THEN ON TRACK 354.90/5.82 TO CROSS SAVVG AT 9000, THEN ON TRACK 017.18/16.92 TO CROSS CMMOE AT 8000 AND AT 230 KIAS, THEN ON TRACK 300.77/2.47 TO CROSS FSCOT AT 8000 AND AT 230 KIAS, THEN ON TRACK 301.29. EXPECT RADAR VECTORS TO FINAL APPROACH COURSE.

LANDING RWY 35: FROM FARBO ON TRACK 013.33/2.21 TO CROSS DNDIS AT 9000 AND AT 230 KIAS, THEN ON TRACK 013.34/8.00 TO CROSS JAMEZ AT OR ABOVE 7000 AND AT 210 KIAS. EXPECT RNAV (RNP), RNAV (GPS), OR ILS RWY 35 APPROACH OR RADAR VECTORS TO FINAL APPROACH COURSE.

FEDERAL AVIATION ADMINISTRATION
FLIGHT STANDARDS SERVICE
STANDARD TERMINAL ARRIVAL (STAR)

Bearings, headings, courses, tracks and radials are magnetic. Elevations and altitudes are in feet, MSL. Altitudes are minimum altitudes unless otherwise indicated.
Ceilings are in feet above airport elevation. Distances are in nautical miles. Visibilities are in statute miles or feet RVR unless otherwise indicated.

Arrival Name	Number	STAR Computer Code	Superseded Number	Dated	Effective Date
BLUEM (RNAV)	FIVE	BLUEM.BLUEM5	FOUR	04/22/2021	

PBN REQUIREMENT NOTES:

RNAV 1 - DME/DME/IRU OR GPS

EQUIPMENT REQUIREMENT NOTES:

RADAR REQUIRED

PROCEDURAL DATA NOTES:

NOTE: JET AIRCRAFT ONLY

NOTE: EXPECT "DESCEND VIA" CLEARANCE AND RUNWAY TRANSITION ASSIGNMENT BY CENTER. APPROACH WILL ASSIGN LANDING RUNWAY.

NOTE: HELLO TRANSITION: DO NOT FILE, TO BE ASSIGNED BY ATC.

NOTE: JET AIRCRAFT DESCEND VIA MACH NUMBER UNTIL 280K, IF UNABLE, ADVISE ATC.

FIXES AND/OR HOLDING PATTERNS:

CHART HOLDING AT LAZYY: HOLD S, RT, 004.00 INBOUND, 10 NM LEGS.

COMMUNICATIONS:

CHART: MINNEAPOLIS CENTER

AIRPORTS SERVED:

AIRPORT ID
MSP

CITY
MINNEAPOLIS

STATE
MN

LOST COMMUNICATIONS PREFERENCES:

REMARKS:

ADDITIONAL FLIGHT DATA:

DME/DME ASSESSMENT: SAT (RNP 2.0)

MAG VAR: MSP 00E/2015

CHART AT FSCOT TERMINUS: MSP LDG RWY 12L

CHART AT HAPTN TERMINUS: MSP LDG RWY 30L/R

CHART AT JAMEZ TERMINUS: MSP LDG RWY 35

CHART AT TIETN TERMINUS: MSP LDG RWY 4, 12R, 17, 22

FEDERAL AVIATION ADMINISTRATION
FLIGHT STANDARDS SERVICE
STANDARD TERMINAL ARRIVAL (STAR)

Bearings, headings, courses, tracks and radials are magnetic. Elevations and altitudes are in feet, MSL. Altitudes are minimum altitudes unless otherwise indicated.
Ceilings are in feet above airport elevation. Distances are in nautical miles. Visibilities are in statute miles or feet RVR unless otherwise indicated.

Arrival Name	Number	STAR Computer Code	Superseded Number	Dated	Effective Date
BLUEM (RNAV)	FIVE	BLUEM.BLUEM5	FOUR	04/22/2021	

FLIGHT INSPECTED BY:

ORGANIZATION: **DATE:**

Flight Inspected Signature: _____

DEVELOPED BY:

CASIMIR TABAKA (SILVIA YOUNG)

AJV-A432

02/06/2025

Developed By Signature: _____

APPROVED BY:

CASIMIR TABAKA

AJV-A432

Approved By Signature: _____

CHANGES:

1. CHANGED BLUEM CROSSING ALTITUDES FROM "AT/ABOVE 11000" TO "AT/ABOVE 10000."
2. CHANGED KICKR MOCA FROM 2500 TO 3000.
3. COMMON ROUTE: ADDED 280 KIAS TO HHAMR.
4. RWY 04, 12R, 17, 22 TRANSITION: REMOVED DOLEE AND ADDED TIETN WITH CROSSING RESTRICTION OF 8000 AT 230 KIAS.; FM LEG CHANGED FROM 300.82 TO 301.32.
5. RWY 30L/R TRANSITION: CHANGED NOFLD CROSSING RESTRICTION FROM "AT 10000" TO "BETWEEN 8000 AND 9000;" MODIFIED EXPECT WORDING.
6. RWY 12L TRANSITION: REMOVED COZZZ AND ADDED FSCOT WITH CROSSING RESTRICTION 8000 AT 230 KIAS.; CMMOE MOVED 1204 FT SE.
7. RWY 35 TRANSITION: ADDED 230 KIAS TO JAMEZ.
8. REMOVED MEAS AND MOCAS FROM ARRIVAL DESCRIPTION.
9. MOVED AND COMBINED "RNAV 1" AND "DME/DME/IRU OR GPS" NOTES FROM PROCEDURAL DATA NOTES TO PBN REQUIREMENT NOTES.
10. MOVED "RADAR REQUIRED" FROM PROCEDURAL DATA NOTES TO EQUIPMENT REQUIREMENT NOTES.
11. CHANGED NOTE FROM "FOR TURBOJET AIRCRAFT ONLY" TO "JET AIRCRAFT ONLY."
12. CHANGED NOTE FROM "TURBOJET AIRCRAFT DESCEND VIA MACH NUMBER UNTIL INTERCEPTING 280K. MAINTAIN 280K UNTIL SLOWED BY THE STAR OR ASSIGNED BY ATC" TO "JET AIRCRAFT DESCEND VIA MACH NUMBER UNTIL 280K, IF UNABLE, ADVISE ATC."
13. CHANGED NOTE FROM "HELLO TRANSITION ATC ASSIGNED ONLY" TO "HELLO TRANSITION: DO NOT FILE, TO BE ASSIGNED BY ATC."
14. REMOVED "MSP APP CON" AND "MSP ATIS" FROM COMMUNICATIONS.
15. REMOVED AIRPORT NAMES FROM AIRPORTS SERVED ALONG WITH K IDENT ON 17.1 FORM.
16. ADDED TERMINUS DATA IN ADDITIONAL FLIGHT DATA.

REASONS:

1. PER ATC REQUEST.
2. IAW 8260.3F, 2-2-7D(3).
- 3-7. PER ATC REQUEST.
8. IAW 8260.3F, 2-2-7D(3).
9. IAW 8260.19J, 4-5-3D.
10. IAW 8260.19J, 4-5-12D.
11. IAW 8260.19J, 4-5-12D(3).
12. IAW 8260.19J, 4-5-2F.
13. IAW 8260.19J, 4-5-2W.

FEDERAL AVIATION ADMINISTRATION
FLIGHT STANDARDS SERVICE
STANDARD TERMINAL ARRIVAL (STAR)

Bearings, headings, courses, tracks and radials are magnetic. Elevations and altitudes are in feet, MSL. Altitudes are minimum altitudes unless otherwise indicated.
Ceilings are in feet above airport elevation. Distances are in nautical miles. Visibilities are in statute miles or feet RVR unless otherwise indicated.

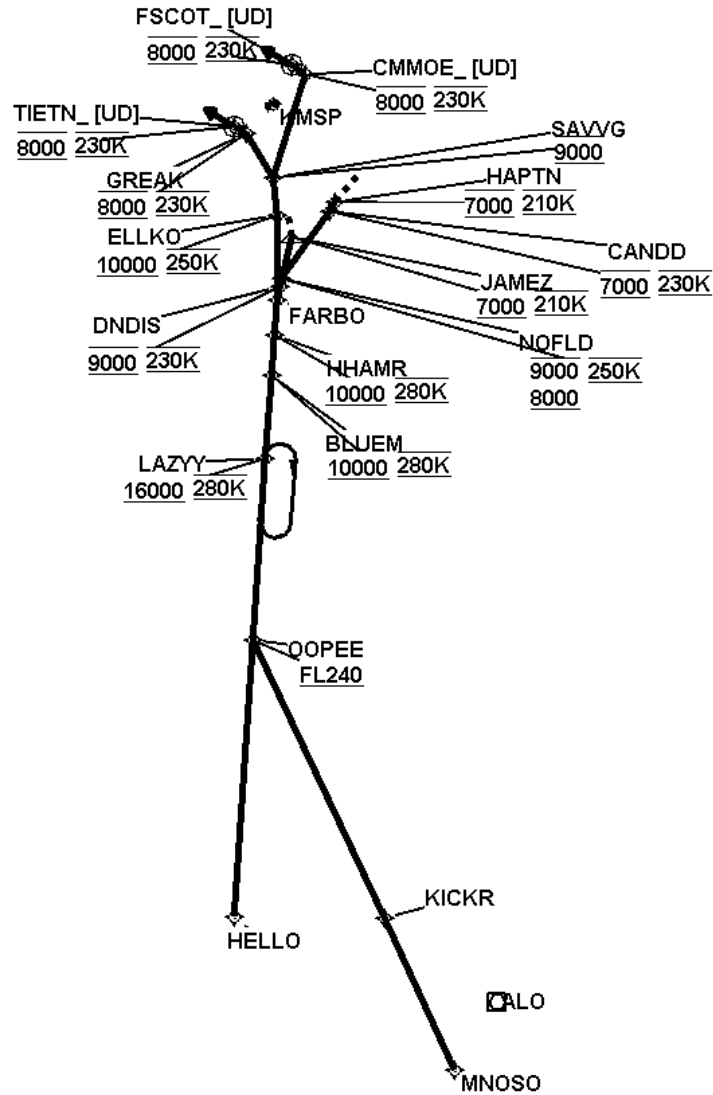
Arrival Name	Number	STAR Computer Code	Superseded Number	Dated	Effective Date
BLUEM (RNAV)	FIVE	BLUEM.BLUEM5	FOUR	04/22/2021	
14. NOW AUTO-CHARTED.					
15. IAW 8260.19J, 4-5-12G.					
16. IAW 8260.19J, 4-5-2H.					



FEDERAL AVIATION ADMINISTRATION
FLIGHT STANDARDS SERVICE
STANDARD TERMINAL ARRIVAL (STAR)

Bearings, headings, courses, tracks and radials are magnetic. Elevations and altitudes are in feet, MSL. Altitudes are minimum altitudes unless otherwise indicated.
Ceilings are in feet above airport elevation. Distances are in nautical miles. Visibilities are in statute miles or feet RVR unless otherwise indicated.

Arrival Name	Number	STAR Computer Code	Superseded Number	Dated	Effective Date
BLUEM (RNAV)	FIVE	BLUEM.BLUEM5	FOUR	04/22/2021	
Graphic Depiction 1					



**FEDERAL AVIATION ADMINISTRATION
FLIGHT STANDARDS SERVICE
STAR (DATA RECORD)**

Arrival Name BLUEM (RNAV)	Number FIVE		STAR Computer Code BLUEM.BLUEM5		Superseded Number FOUR		Dated 04/22/2021		Effective Date
<u>FIX/NAVAID</u>	<u>LAT/LONG</u>	<u>C</u>	<u>FO/FB</u>	<u>LEG TYPE</u>	<u>TC</u>	<u>DIST (NM)</u>	<u>ALTITUDE</u>	<u>SPEED</u>	<u>REMARKS</u>
En Route Transition									
HELLO	424651.00N / 0932135.00W	Y		IF					HELLO.BLUEM5
OOPEE	432950.00N / 0931732.00W	Y	FB	TF	003.92	43.08	AT/ABOVE FL240		
LAZYY	435755.00N / 0931449.00W	Y	FB	TF	004.00	28.15	AT/ABOVE 16000	AT 280K	
BLUEM	441052.86N / 0931325.67W	Y	FB	TF	004.41	13.00	AT/ABOVE 10000	AT 280K	
En Route Transition									
KICKR	424631.00N / 0924841.00W	Y		IF					KICKR.BLUEM5
OOPEE	432950.00N / 0931732.00W	Y	FB	TF	334.16	48.18	AT/ABOVE FL240		
LAZYY	435755.00N / 0931449.00W	Y	FB	TF	004.00	28.15	AT/ABOVE 16000	AT 280K	
BLUEM	441052.86N / 0931325.67W	Y	FB	TF	004.41	13.00	AT/ABOVE 10000	AT 280K	
En Route Transition									
LAZYY	435755.00N / 0931449.00W	Y		IF			AT/ABOVE 16000	AT 280K	LAZYY.BLUEM5
BLUEM	441052.86N / 0931325.67W	Y	FB	TF	004.41	13.00	AT/ABOVE 10000	AT 280K	
En Route Transition									
MNOSO	422255.92N / 0923326.95W	Y		IF					MNOSO.BLUEM5
KICKR	424631.00N / 0924841.00W	Y	FB	TF	334.57	26.13			
OOPEE	432950.00N / 0931732.00W	Y	FB	TF	334.16	48.18	AT/ABOVE FL240		
LAZYY	435755.00N / 0931449.00W	Y	FB	TF	004.00	28.15	AT/ABOVE 16000	AT 280K	
BLUEM	441052.86N / 0931325.67W	Y	FB	TF	004.41	13.00	AT/ABOVE 10000	AT 280K	
En Route Transition									
OOPEE	432950.00N / 0931732.00W	Y		IF			AT/ABOVE FL240		OOPEE.BLUEM5
LAZYY	435755.00N / 0931449.00W	Y	FB	TF	004.00	28.15	AT/ABOVE 16000	AT 280K	
BLUEM	441052.86N / 0931325.67W	Y	FB	TF	004.41	13.00	AT/ABOVE 10000	AT 280K	



**FEDERAL AVIATION ADMINISTRATION
FLIGHT STANDARDS SERVICE
STAR (DATA RECORD)**

Arrival Name BLUEM (RNAV)	Number FIVE		STAR Computer Code BLUEM.BLUEM5		Superseded Number FOUR		Dated 04/22/2021		Effective Date
<u>FIX/NAVAID</u>	<u>LAT/LONG</u>	<u>C</u>	<u>FO/FB</u>	<u>LEG TYPE</u>	<u>TC</u>	<u>DIST (NM)</u>	<u>ALTITUDE</u>	<u>SPEED</u>	<u>REMARKS</u>
Common Route									
BLUEM	441052.86N / 0931325.67W	Y		IF			AT/ABOVE 10000	AT 280K	BLUEM.BLUEM5
HHAMR	441703.65N / 0931251.79W	Y	FB	TF	003.76	06.19	AT/ABOVE 10000	AT 280K	
FARBO	442228.13N / 0931226.22W	Y	FB	TF	003.23	05.42			
Runway Transition									
FARBO	442228.13N / 0931226.22W	Y		IF					
ELLKO	443542.49N / 0931226.32W	Y	FB	TF	359.99	13.24	AT/ABOVE 10000	AT 250K	
SAVVG	444130.09N / 0931309.85W	Y	FB	TF	354.90	05.82	AT 9000		
GREAK	444819.40N / 0931904.57W	Y	FB	TF	328.34	08.02	AT 8000	AT 230K	
TIETN	444929.62N / 0932146.79W	Y	FO	TF	301.32	02.25	AT 8000	AT 230K	
KMSP:R04, R12R, R17, R22				FM	301.32				
Runway Transition									
FARBO	442228.13N / 0931226.22W	Y		IF					
NOFLD	442552.15N / 0931120.70W	Y	FB	TF	012.96	03.49	8000B9000	AT 250K	
CANDD	443622.81N / 0930050.94W	Y	FB	TF	035.48	12.92	AT 7000	AT 230K	
HAPTN	443742.13N / 0925930.61W	Y	FB	TF	035.87	01.63	AT 7000	AT 210K	
KMSP:R30L, R30R									
Runway Transition									
FARBO	442228.13N / 0931226.22W	Y		IF					
ELLKO	443542.49N / 0931226.32W	Y	FB	TF	359.99	13.24	AT/ABOVE 10000	AT 250K	
SAVVG	444130.09N / 0931309.85W	Y	FB	TF	354.90	05.82	AT 9000		
CMMOE	445739.87N / 0930607.55W	Y	FB	TF	017.18	16.92	AT 8000	AT 230K	
FSCOT	445855.65N / 0930906.94W	Y	FO	TF	300.77	02.47	AT 8000	AT 230K	
KMSP:RWY 12L				FM	301.29				

FEDERAL AVIATION ADMINISTRATION
FLIGHT STANDARDS SERVICE
STAR (DATA RECORD)

Arrival Name BLUEM (RNAV)		Number FIVE		STAR Computer Code BLUEM.BLUEM5			Superseded Number FOUR		Dated 04/22/2021	Effective Date
<u>FIX/NAVAID</u>	<u>LAT/LONG</u>	<u>C</u>	<u>FO/FB</u>	<u>LEG TYPE</u>	<u>TC</u>	<u>DIST (NM)</u>	<u>ALTITUDE</u>	<u>SPEED</u>	<u>REMARKS</u>	
Runway Transition										
FARBO	442228.13N / 0931226.22W	Y		IF						
DNDIS	442437.21N / 0931143.55W	Y	FB	TF	013.33	02.21	AT 9000	AT 230K		
JAMEZ	443224.23N / 0930908.72W	Y	FB	TF	013.34	08.00	AT/ABOVE 7000	AT 210K		
KMSP:RWY 35										