

Flight Procedures Cover Page	Task Action: Abbreviated Amendment	Task Type: SID	Estimated Chart Date: 12/26/2024	APWS Task ID: 5D46FE921C704FB29477E5BE54A6CDD1	APWS Project ID: 16877826AD5A4F3DA88A4444A6FE1A88
Procedure: ELMAA FIVE		Enroute: YES	Specialist: Christensen, Richard		Agreement Number:
Airport ID: KSEA			Airport City: SEATTLE		State: WA
Facility ID: SEA	Facility Type: VORTAC	Flight Inspection Remark Type:			
<div>Procedure Comments: ACTIVE DATA USED FOR AIRPORT AND RUNWAYS.</div> <div>PROCESSED IAW TECHNICAL SUPPORT GROUP (AJF-17) MEMO DATED 07/07/2021, SUBJECT: GUIDANCE FOR PROCEDURAL CHANGES REQUIRING FLIGHT INSPECTION/VALIDATION</div> <div>YYJ DECOM.</div> <div>CONTACTS: ERIC SUSKI (AJV-A431), 405.954.7331 BEVERLY L. BORDY (AJV-A430), 405.954.8293</div> <div>11/14/24: THIS IS A CORRECTED COPY OF THE FORM APPROVED ON 08/02/24.</div> <div>1. DP ROUTE DESCRIPTION: CHANGED DP ROUTE DESCRIPTION FROM "...TO CROSS PEAKK/5.00 DME/RADAR AT OR ABOVE 3000, THEN RIGHT TURN ON HEADING 251 TO INTERCEPT SEA VORTAC R-230 TO ELMAA/HQM 32.66 DME, THEN ON COURSE 229.05 TO CROSS HQM VORTAC R-049 AT OR ABOVE MEA FOR ROUTE OF FLIGHT. MAINTAIN ATC ASSIGNED ALTITUDE, EXPECT REQUESTED ALTITUDE 15 NM FROM SEA." TO "...TO CROSS PEAKK/5.00 DME/RADAR AT OR ABOVE 3000, THEN RIGHT TURN ON HEADING 251 TO INTERCEPT SEA VORTAC R-230 TO ELMAA/HQM 32.66 DME, THEN ON TRANSITION/ASSIGNED ROUTE. MAINTAIN ATC ASSIGNED ALTITUDE, EXPECT REQUESTED ALTITUDE 15 NM FROM SEA."</div> <div>2. TRANSITION ROUTE: ADDED HOQUIAM TRANSITION BACK INTO TRANSITION ROUTES.</div> <div><div>Digitally signed by</div><div><b>ERIC N SUSKI</b></div><div>Nov 15, 2024</div></div>					

QUALITY  
20  
CHECKED

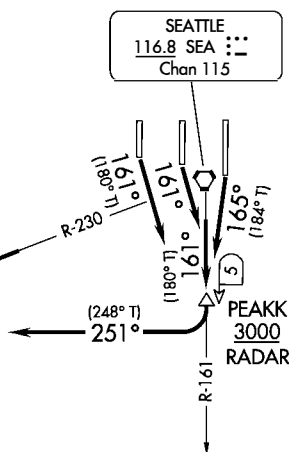
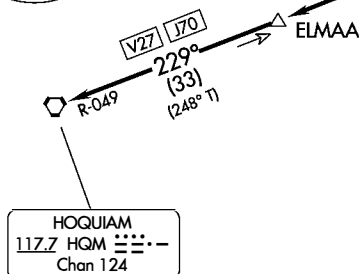
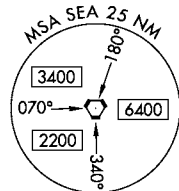
QUALITY  
38  
CHECKED

## ELMAA FIVE DEPARTURE

AL-582 (FAA)

SEATTLE-TACOMA INTL (SEA)  
SEATTLE, WASHINGTONSEATTLE DEP CON  
120.4 395.0  
D-ATIS  
118.0  
CLNC DEL  
128.0

RADAR and DME required.

**TOP ALTITUDE:  
ASSIGNED BY ATC****PROTOTYPE-NOT  
FOR NAVIGATION****TAKEOFF MINIMUMS**Rwy 16L: Standard with minimum climb of  
560'/NM to 3000.Rwy 16C: Standard with minimum climb of  
515'/NM to 3000.Rwy 16R: Standard with minimum climb of  
500'/NM to 3000.

NOTE: Chart not to scale.

**DEPARTURE ROUTE DESCRIPTION**TAKEOFF RUNWAY 16L: Climb on heading 165° and SEA R-161, thence. . .TAKEOFF RUNWAYS 16C, 16R: Climb on heading 161° and SEA R-161, thence. . .

...to cross PEAKK/5.00 DME/RADAR at or above 3000, then right turn on heading 251  
to intercept SEA VORTAC R-230 to ELMAA/HQM 32.66 DME, then on transition/assigned  
route. Maintain ATC assigned altitude, expect requested altitude 15 NM from SEA.

HOQUIAM TRANSITION (ELMAA5.HQM) From over ELMAA on HQM R-049 to  
HQM VORTAC.

NW-1, 16 MAY 2024 to 13 JUN 2024



INFO ONLY

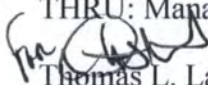
## Federal Aviation Administration

---

### Memorandum

Date: SEP 25 2008

To: Manager, Flight Technologies and Procedures Division  
THRU: Manager, Flight Procedure Implementation & Oversight Branch

From:  Thomas L. Lattimer  
Manager, National Flight Procedures Group

Reply To Attn Of: Larry Strout:  
(405) 954-7370  
FAX (405) 954-1301

Subject: **ACTION:** Approval Request

---

ELMAA THREE DEPARTURE, SEATTLE, WA.

CLIMB GRADIENT EXCEEDS 500 FEET PER NM, 8260.46C PARA 10e (2).

Request approval for use of ATC 560 feet per NM climb gradient for RWY 16L, ATC 515 feet per NM climb gradient for RWY 16C, ATC 500 feet per nm climb gradient for RWY 16R.

Establishing the climb gradient will meet requirements for noise abatement restrictions placed on by ATC and the Port of Seattle.

Please respond no later than: 26 November 2008

Attachments