

Flight Procedures Cover Page	Task Action: P-NOTAM	Task Type: IAP	Estimated Chart Date: 02/20/2025	APWS Task ID: 5DD6D6E2CF6A4B569FB9CBADD892966F	APWS Project ID: C7F233467BC446DAAE86B0F1D1735615
Procedure: VOR RWY 26 AMDT 2D	Enroute: NO	Specialist: Feronti, Tia	Agreement Number:		
Airport ID: KTNP	Airport City: TWENTYNINE PALMS	State: CA			
Facility ID: TNP	Facility Type: VORTAC	Flight Inspection Remark Type:			

**Procedure Comments:**  
 PROCESSED IAW TECHNICAL SUPPORT GROUP (AJF-17) MEMO DATED 07/07/2021 GUIDANCE FOR PROCEDURAL CHANGES REQUIRING FLIGHT INSPECTION/VALIDATION.  
 CIRCLING RWY 8, 17 NA AT NIGHT.  
 CONTACT DAVID DANNER, MANAGER, AJV-A421, 405-954-5077.



QUALITY  
 32  
 CHECKED  
 Digitally signed by  
**PABLO ORTIZ-JR**  
 Nov 05, 2024

VORTAC TNP <b>114.2</b> Chan <b>89</b>	APP CRS <b>264°</b>	Rwy Idg <b>5531</b> TDZE <b>1835</b> Apt Elev <b>1888</b>
--	------------------------	---

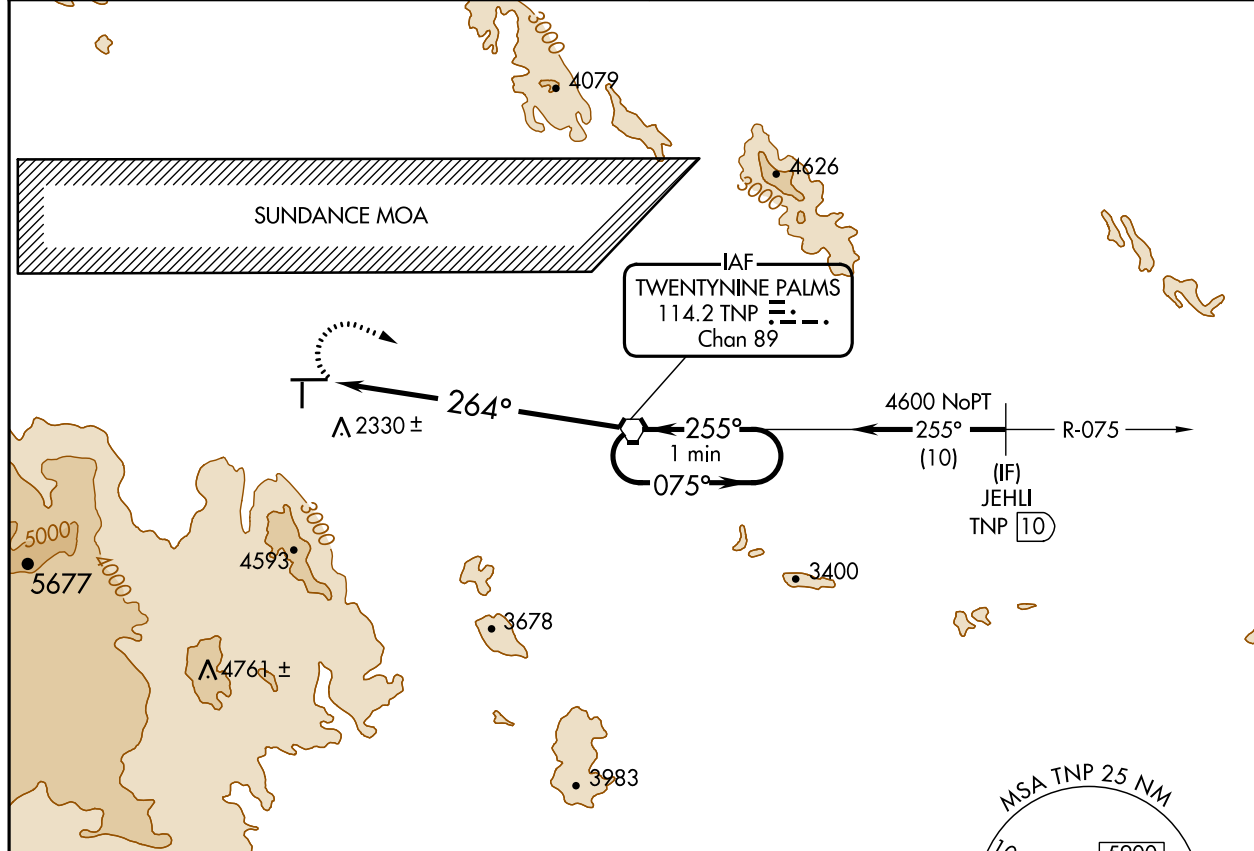
# VOR RWY 26

TWENTYNINE PALMS (TNP)

**▼** When Palm Springs Intl altimeter setting not received, procedure NA. Circling NA south of Rwy 8-26. Use Palm Springs Intl altimeter setting. Circling Rwy 8 NA at night.

**▲ NA** MISSED APPROACH: Climbing right turn to 5900 direct TNP VORTAC and hold, continue climb-in-hold to 5900.

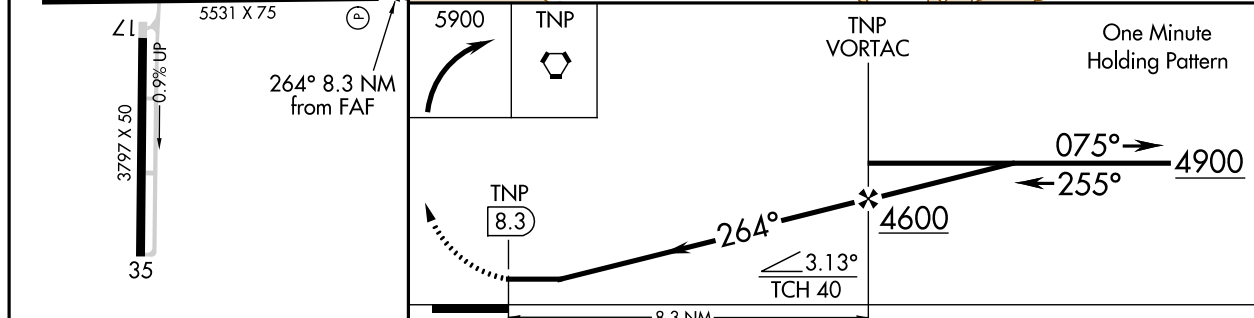
LOS ANGELES CENTER <b>128.15 285.6</b>	AUNICOM <b>122.8 (CTAF)</b>
---	--------------------------------



SW-3, 05 SEP 2024 to 03 OCT 2024

SW-3, 05 SEP 2024 to 03 OCT 2024

ELEV 1888	TDZE 1835
-----------	-----------



REIL Rws 8 and 26	MIRL Rws 8-26 and 17-35	FAF to MAP 8.3 NM			
Knots	60	90	120	150	180
Min:Sec	8:18	5:32	4:09	3:19	2:46
<b>☐</b> CATEGORY	A	B	C	D	
S-26	3580-1¼ 1745 (1700-1¼)	3580-1½ 1745 (1700-1½)	NA		
<b>☐</b> CIRCLING	3580-1¼ 1692 (1700-1¼)	3580-1½ 1692 (1700-1½)	NA		