

| | | | | | |
|---|------------------------------|---|-------------------------------------|---|--|
| Flight Procedures Cover Page | Task Action: FLIGHT CHECK | Task Type: IAP | Estimated Chart Date: 05/14/2026 | APWS Task ID: 6165A0F414734FC3988F89C68774FE4C | APWS Project ID: 275E3833212E42A0A5E6280FDB2E60D6 |
| Procedure: ILS OR LOC RWY 13R AMDT 11B | | Enroute: NO | Specialist: Burchell, Brandon | | Agreement Number: |
| Airport ID: KHIO | | | Airport City: PORTLAND | | State: OR |
| Facility ID: HIO | Facility Type: ILS | Flight Inspection Remark Type: New FC Slot | | | |

Procedure Comments:
ABBREVIATED AMENDMENT.

!FDC 5/9203 HIO IAP PORTLAND-HILLSBORO, PORTLAND, OR. ILS OR LOC RWY 13R, AMDT 11A... JIKIM FIX MINIMUMS (DUAL VOR RECEIVERS REQUIRED): CIRCLING CAT C MDA 940/HAA 732. VIS CAT C 2. 2510231734-2710231734EST.

POC: KYLE THOMPSON, AJV A33, 405-954-2135.

COUVE 8260-2:
03/27/2026 THIS IS A CORRECTED COPY OF THE FORM APPROVED ON 03/17/2026.
1. FIX MAKE-UP FACILITY 2: REMOVED MAG/TRUE BRG - UBG PROVIDING DME, BEARINGS NOT NEEDED.

QUALITY
38
CHECKED

QUALITY
40
CHECKED

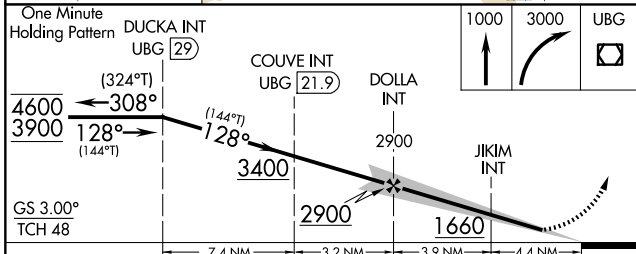
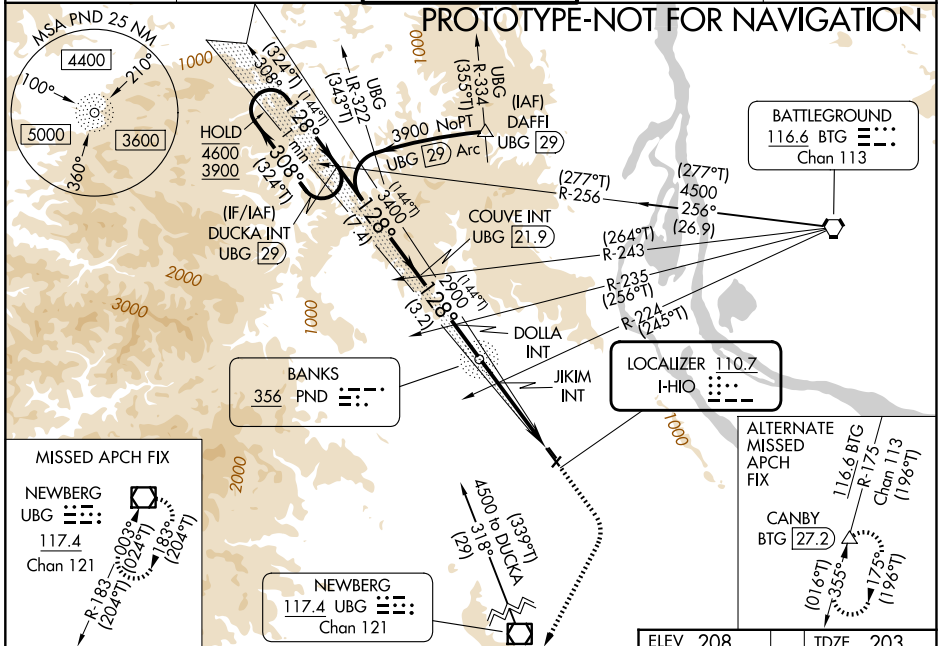
| | | | |
|--------------|-------------|----------|-------------|
| LOC I-HIO | APP CRS | Rwy Ldg | 6600 |
| 110.7 | 128° | TDZE | 203 |
| | | Apt Elev | 208 |

ILS or LOC RWY 13R

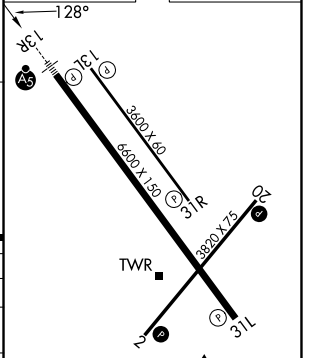
PORTLAND-HILLSBORO (HIO)

| | | |
|--|--------------|---|
| <p>⚠ Circling to Rwy 13L, 31R NA at night. Inop table does not apply to S-LOC Rwy 13R all Cats. For inop ALS, increase JKIM fix minimums Cat C/D visibility to 1 3/8 SM. * RVR 1800 authorized with use of FD or AP or HUD to DA (NA when using PDX altimeter setting).</p> | <p>MALSR</p> | <p>MISSED APPROACH: Climb to 1000 then climbing right turn to 3000 direct UBG VOR/DME and hold.</p> |
|--|--------------|---|

| | | | | |
|----------------------------------|---|--|------------------------------------|------------------------------------|
| <p>ATIS</p> <p>127.65</p> | <p>PORTLAND APP CON</p> <p>126.0 269.175</p> | <p>HILLSBORO TOWER *</p> <p>119.3(CTAF) 0 239.3</p> | <p>GND CON</p> <p>121.7</p> | <p>UNICOM</p> <p>122.95</p> |
|----------------------------------|---|--|------------------------------------|------------------------------------|



| | |
|----------|----------|
| ELEV 208 | TDZE 203 |
|----------|----------|



| CATEGORY | A | B | C | D |
|---|---------------------------------|---------------------------------|----------------------|------------------------------|
| S-ILS 13R* | 403/24 200 (200-1/2) | | | |
| S-LOC 13R | 1660/40 1457 (1500-3/4) | 1660/55 1457 (1500-1) | 1660-3 | 1457 (1500-3) |
| CIRCLING | 1660-1 1/4 1452 (1500-1 1/4) | 1660-1 1/2 1452 (1500-1 1/2) | 1660-3 | 1452 (1500-3) |
| JKIM FIX MINIMUMS (DUAL VOR RECEIVERS REQUIRED) | | | | |
| S-LOC 13R | 700/24 | 497 (500-1/2) | 700/50 | 497 (500-1) |
| CIRCLING | 700-1 492 (500-1) | 720-1 512 (600-1) | 940-2 732 (800-2) | 980-2 1/2 772 (800-2 1/2) |

| | |
|---------------------------|--------------------------|
| REIL Rwy 31L | ★ |
| HIRL Rwy 13R-31L | |
| MIRL Rwy 2-20 and 13L-31R | |
| FAF to MAP 8.3 NM | |
| Knots | 60 90 120 150 180 |
| Min:Sec | 8:18 5:32 4:09 3:19 2:46 |

| | | | |
|---------------------------|------------------------|-----------------------------|---|
| LOC I-HIO 110.7 | APP CRS 128° | Rwy Idg TDZE Apt Elev | 6600 203 208 |
|---------------------------|------------------------|-----------------------------|---|

OLD

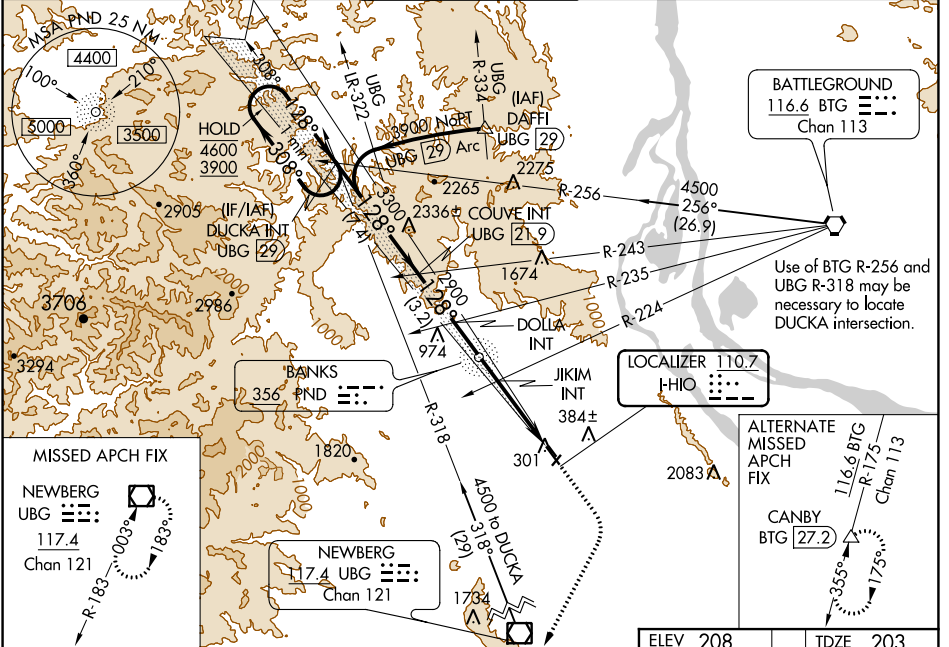
ILS or LOC RWY 13R
PORTLAND-HILLSBORO (HIO)

⚠ Circling to Rwy 13L, 31R NA at night. Inop table does not apply to S-LOC Rwy 13R all Cats. For inop ALS, increase JKIM fix minimums Cat C/D visibility to 1 3/8 SM.

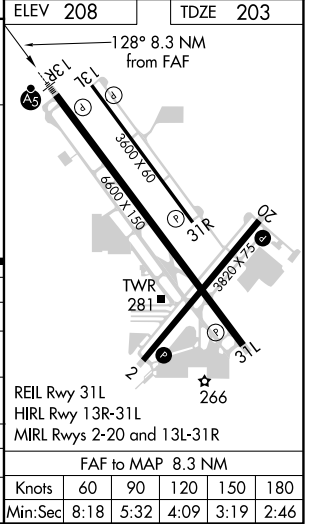
MALS


MISSED APPROACH: Climb to 1000 then climbing right turn to 3000 direct UBG VOR/DME and hold. Continue climb-in-hold to 3000.

| | | | | |
|-----------------------|--|--|-------------------------|-------------------------|
| ATIS 127.65 | PORTLAND APP CON 126.0 269.175 | HILLSBORO TOWER * 119.3 (CTAF) 239.3 | GND CON 121.7 | UNICOM 122.95 |
|-----------------------|--|--|-------------------------|-------------------------|



| | | | | | | | |
|---|---------------------------------|----------------------|---------------------------------|---------------|------------------------------|----------|------------------------------|
| DUCKA INT UBG (29) | | COUVE INT UBG (21.9) | | DOLLA INT | | JKIM INT | |
| One Minute Holding Pattern | | | | | | | |
| 4600 ← 308° | | 3300 ← 128° | | 2900 | | *1660 | |
| 3900 | | | | | | | |
| GS 3.00° | | | | | | | |
| TCH 48 | | | | | | | |
| 7.4 NM | | 3.2 NM | | 3.9 NM | | 4.4 NM | |
| CATEGORY | A | B | C | D | | | |
| S-ILS 13R | 403/24 | | | 200 (200-1/2) | | | |
| S-LOC 13R | 1660/60 1457 (1500-1 1/4) | | 1660-1 1/2 1457 (1500-1 1/2) | | 1660-3 1457 (1500-3) | | |
| C CIRCLING | 1660-1 1/4 1452 (1500-1 1/4) | | 1660-1 1/2 1452 (1500-1 1/2) | | 1660-3 1452 (1500-3) | | |
| JKIM FIX MINIMUMS (DUAL VOR RECEIVERS REQUIRED) | | | | | | | |
| S-LOC 13R | 680/24 477 (500-1/2) | | 680/50 477 (500-1) | | | | |
| C CIRCLING | 680-1 472 (500-1) | | 720-1 512 (600-1) | | 720-1 1/2 512 (600-1 1/2) | | 980-2 1/2 772 (800-2 1/2) |



NW-1, 08 OCT 2020 to 05 NOV 2020

NW-1, 08 OCT 2020 to 05 NOV 2020