

Flight Procedures Cover Page	Task Action: P-NOTAM	Task Type: IAP	Estimated Chart Date: 05/16/2024	APWS Task ID: 61EC72BBE88C4C8398B70BBEA1161CC2	APWS Project ID: 5E71C33A8DE64471A2E527D81A64808D
Procedure: VOR/DME OR TACAN RWY 13 AMDT 2B		Enroute: NO	Specialist: Dumar, Ralph		Agreement Number:
Airport ID: KGGG			Airport City: LONGVIEW		State: TX
Facility ID:	Facility Type:	Flight Inspection Remark Type:			

Procedure Comments:
 PROCESSED IAW TECHNICAL SUPPORT GROUP (AJF-17) MEMO DATED 07/07/2021 GUIDANCE FOR PROCEDURAL CHANGES REQUIRING FLIGHT INSPECTION/VALIDATION

REMARKS: GGG AI PORTAL INQUIRY.
 CONTACT RAKE MCGRAW (405) 954-8711

QUALITY
 33
 CHECKED

QUALITY
 13
 CHECKED

VORTAC GGG
112.9
 Chan 76

APP CRS
125°

Rwy Idg **9200**
 TDZE **358**
 Apt Elev **365**



VOR/DME or TACAN RWY 13

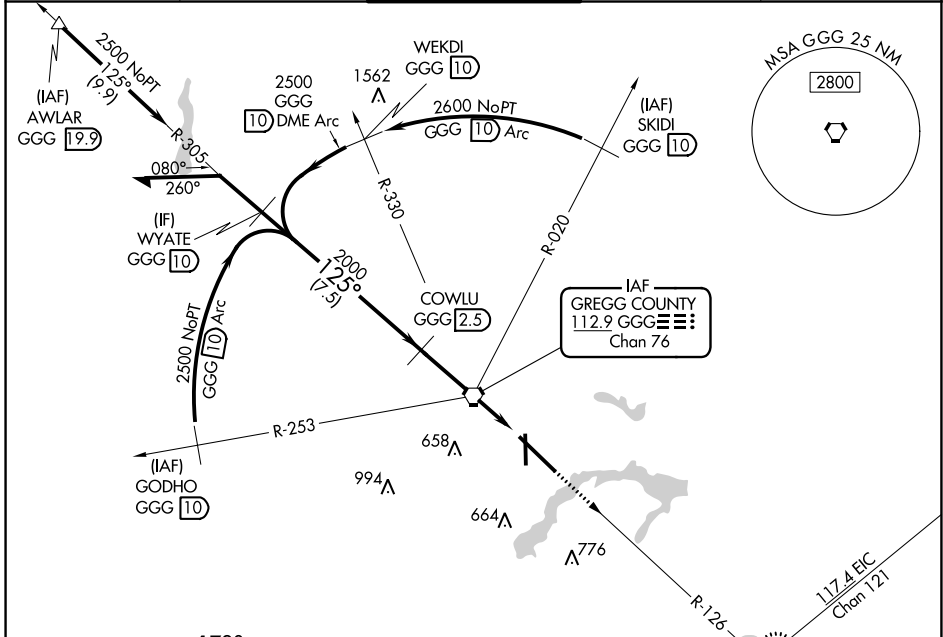
EAST TEXAS RGNL (GGG)

⚠ For inop ALS, increase S-13 Cat C/D/E visibility to 1 $\frac{1}{2}$ SM. When local altimeter setting not received use Gilmer altimeter setting and increase all MDA 60 feet, S-13 and Circling Cats C/D/E visibility $\frac{1}{2}$ SM. VDP NA when using Gilmer altimeter setting. For inop ALS when using Gilmer altimeter setting increase S-13 Cat C/D/E visibility to 1 $\frac{1}{2}$ SM.

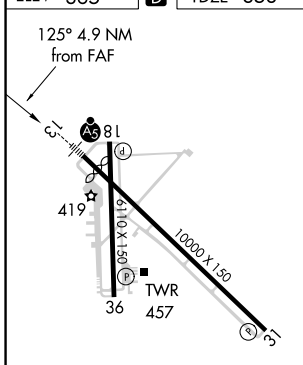


MISSED APPROACH:
 Climb to 3000 via GGG R-126 to ARGEN Int/GGG 14 DME and hold.

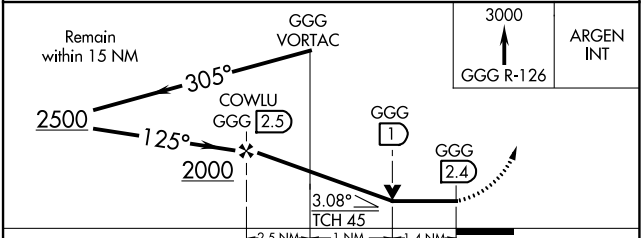
ATIS 119.65	LONGVIEW APP CON* 128.75 379.15	EASTEX TOWER* 119.2 (CTAF) 377.05	GND CON 121.6	UNICOM 122.95
-----------------------	---	---	-------------------------	-------------------------



ELEV 365 **D** TDZE 358



HIRL Rwy 13-31 **1**
 MIRL Rwy 18-36



CATEGORY	A	B	C	D	E
S-13	860/24 502 (500- $\frac{1}{2}$)		860/55 502 (500-1)		860/55 502 (500-1)
CIRCLING	860-1 495 (500-1)		980-1 $\frac{3}{4}$ 614 (700-1 $\frac{3}{4}$)	1080-2 $\frac{1}{4}$ 714 (600-2 $\frac{1}{4}$)	1080-2 $\frac{1}{2}$ 715 (800-2 $\frac{1}{2}$)

SC-2, 30 NOV 2023 to 28 DEC 2023

SC-2, 30 NOV 2023 to 28 DEC 2023