

FEDERAL AVIATION ADMINISTRATION
 FLIGHT STANDARDS SERVICE
 STANDARD TERMINAL ARRIVAL (STAR)

Bearings, headings, courses, tracks and radials are magnetic. Elevations and altitudes are in feet, MSL. Altitudes are minimum altitudes unless otherwise indicated.
 Ceilings are in feet above airport elevation. Distances are in nautical miles. Visibilities are in statute miles or feet RVR unless otherwise indicated.

Arrival Name MNSTR (RNAV)	Number TWO	STAR Computer Code CLERY.MNSTR2	Superseded Number ONE	Dated 02/23/2023	Effective Date
-------------------------------------	----------------------	---	---------------------------------	----------------------------	----------------

TRANSITION ROUTES:

Transition Name	Transition Computer Codes	From FIX/NAVAID	To FIX/NAVAID	Course	Distance	MEA	MOCA	MAA	Crossing Altitudes / Fixes
GULFPORT	GPT.MNSTR2	GPT VORTAC	GPT VORTAC						
			MUDDA	248.00	12.00	5000	2100		
			CLERY	247.90	08.00	5000	2100		
SEMMES	SJI.MNSTR2	SJI VORTAC	SJI VORTAC						
			BUGLE	243.98	14.90	5000	2100		
			GPT VORTAC	243.84	26.89	5000	2100		
			MUDDA	248.00	12.00	5000	2100		
			CLERY	247.90	08.00	5000	2100		

ARRIVAL ROUTE DESCRIPTION:

MSY: FROM CLERY ON TRACK 247.82/9.63 TO CROSS MNSTR AT 11000 AND AT 250 KIAS, THEN ON TRACK 247.74/7.50 TO CROSS SLIDD BETWEEN 7000 AND 9000.

LANDING MSY RWY 2: FROM SLIDD ON TRACK 234.33/30.76 TO KAJUN, THEN ON TRACK 196.44/2.00 TO CROSS BOODN AT OR ABOVE 4000 AND AT 210 KIAS, THEN ON TRACK 196.44. EXPECT RADAR VECTORS TO FINAL APPROACH COURSE.

LANDING MSY RWY 11: FROM SLIDD ON TRACK 249.28/21.27 TO CROSS KREOL AT OR ABOVE 6000, THEN ON TRACK 286.54/7.08 TO CROSS RDBEN AT 5000, THEN ON TRACK 286.54. EXPECT RADAR VECTORS TO FINAL APPROACH COURSE.

LANDING MSY RWY 20: FROM SLIDD ON TRACK 278.63/12.00 TO CROSS CHRBL AT OR ABOVE 6000, THEN ON TRACK 278.51/11.31 TO CROSS RAYOP AT OR ABOVE 4000. EXPECT LOC OR RNAV RWY 20 APPROACH.

LANDING MSY RWY 29: FROM SLIDD ON TRACK 224.23/14.92 TO CROSS RRROO AT OR ABOVE 5000, THEN ON TRACK 224.23. EXPECT RADAR VECTORS TO FINAL APPROACH COURSE.

LANDING NEW/NBG: FROM CLERY ON TRACK 247.74/9.63 TO CROSS MNSTR AT 11000 AND AT 250 KIAS, THEN ON TRACK 247.74/1.00 TO CROSS POBOI AT 11000, THEN ON TRACK 247.74. EXPECT RADAR VECTORS TO FINAL APPROACH COURSE.

PBN REQUIREMENT NOTES:

RNAV 1 - DME/DME/IRU OR GPS

EQUIPMENT REQUIREMENT NOTES:

RADAR REQUIRED

PROCEDURAL DATA NOTES:

FIXES AND/OR HOLDING PATTERNS:

CHART HOLDING AT CLERY: HOLD E, RT, 247.90 INBOUND, 7 NM LEGS.

COMMUNICATIONS:



FEDERAL AVIATION ADMINISTRATION
 FLIGHT STANDARDS SERVICE
 STANDARD TERMINAL ARRIVAL (STAR)

Bearings, headings, courses, tracks and radials are magnetic. Elevations and altitudes are in feet, MSL. Altitudes are minimum altitudes unless otherwise indicated.
 Ceilings are in feet above airport elevation. Distances are in nautical miles. Visibilities are in statute miles or feet RVR unless otherwise indicated.

Arrival Name	Number	STAR Computer Code	Superseded Number	Dated	Effective Date
MNSTR (RNAV)	TWO	CLERY.MNSTR2	ONE	02/23/2023	

AIRPORTS SERVED:

<u>AIRPORT ID</u>	<u>CITY</u>	<u>STATE</u>
MSY	NEW ORLEANS	LA
NEW	NEW ORLEANS	LA
NBG	NEW ORLEANS	LA

LOST COMMUNICATIONS PREFERENCES:

REMARKS:

2100 FT MOCA VALUES ATTRIBUTED TO OBST 22-001440 (1049 MSL TWR).
 GPT TRANSITION EMBEDDED WITHIN SJI TRANSITION.

ADDITIONAL FLIGHT DATA:

DME/DME ASSESSMENT: SAT (RNP 2.0)
 MAG VAR: MSY 01W/2020
 CHART AT RAYOP TERMINUS: MSY LDG RWY 20
 CHART AT RRROO TERMINUS: MSY LDG RWY 29
 CHART AT BOODN TERMINUS: MSY LDG RWY 2
 CHART AT RDBEN TERMINUS: MSY LDG RWY 11
 CHART AT POBOI TERMINUS: LDG NBG/NEW

FLIGHT INSPECTED BY:

KENNETH E JACK

ORGANIZATION:

AJF

DATE:

03/10/2026

Flight Inspected Signature:

Digitally signed by

ALLAN WILL

Mar 12, 2026

Digitally signed by

DEVELOPED BY:

Thomas Kuklish

AJV-A330

11/25/2025

Developed By Signature:

ALLAN WILL

Mar 12, 2026

APPROVED BY:

Kyle Thompson

AJV-A330

Approved By Signature:

Digitally signed by

ALLAN WILL

Mar 12, 2026

CHANGES:

1. COMMON ROUTE FIX CHANGED FROM MNSTR TO CLERY.
2. NEW/NBG COMMON ROUTE NOW ENDS AT POBOI.
3. ADDED CROSSING ALT 11000 AND SPEED RESTRICTION 250 KIAS TO FIX MNSTR.
4. CROSSING RESTRICTION AT SLIDD CHANGED FROM 11000 TO 7000B9000; REMOVED AIRSPEED.
5. RUNWAY TRANSITIONS ADDED TO ALL MSY RUNWAYS.



FEDERAL AVIATION ADMINISTRATION
 FLIGHT STANDARDS SERVICE
 STANDARD TERMINAL ARRIVAL (STAR)

Bearings, headings, courses, tracks and radials are magnetic. Elevations and altitudes are in feet, MSL. Altitudes are minimum altitudes unless otherwise indicated.
 Ceilings are in feet above airport elevation. Distances are in nautical miles. Visibilities are in statute miles or feet RVR unless otherwise indicated.

Arrival Name	Number	STAR Computer Code	Superseded Number	Dated	Effective Date
MNSTR (RNAV)	TWO	CLERY.MNSTR2	ONE	02/23/2023	

- 6. COMPUTER CODE CHANGED FROM "MNSTR.MNSTR1" TO "CLERY.MNSTR2".
- 7. REMOVED ARPT K IDENT FROM 17.1 FORM.
- 8. ALL MOCAS FOR GULFPORT AND SEMMES TRANSITIONS CHANGED TO 2100.

REASONS:

- 1-5. PER ATC REQUEST.
- 6. IAW 8260.19K, 4-5-2R.
- 7. IAW WITH CURRENT DOCUMENTATION STANDARDS.
- 8. DUE TO OBST 22-001440 IN FOLLOWING SEGMENT.

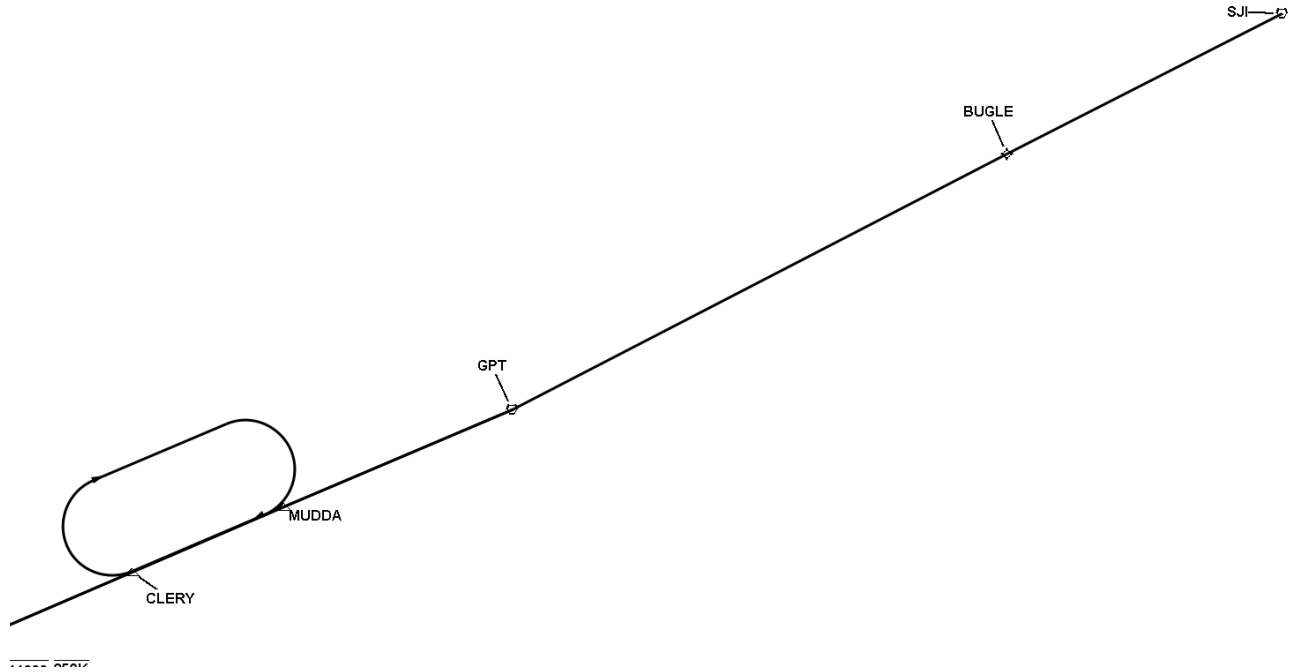


FEDERAL AVIATION ADMINISTRATION
 FLIGHT STANDARDS SERVICE
 STANDARD TERMINAL ARRIVAL (STAR)

Bearings, headings, courses, tracks and radials are magnetic. Elevations and altitudes are in feet, MSL. Altitudes are minimum altitudes unless otherwise indicated.
 Ceilings are in feet above airport elevation. Distances are in nautical miles. Visibilities are in statute miles or feet RVR unless otherwise indicated.

Arrival Name	Number	STAR Computer Code	Superseded Number	Dated	Effective Date
MNSTR (RNAV)	TWO	CLERY.MNSTR2	ONE	02/23/2023	

Graphic Depiction 1

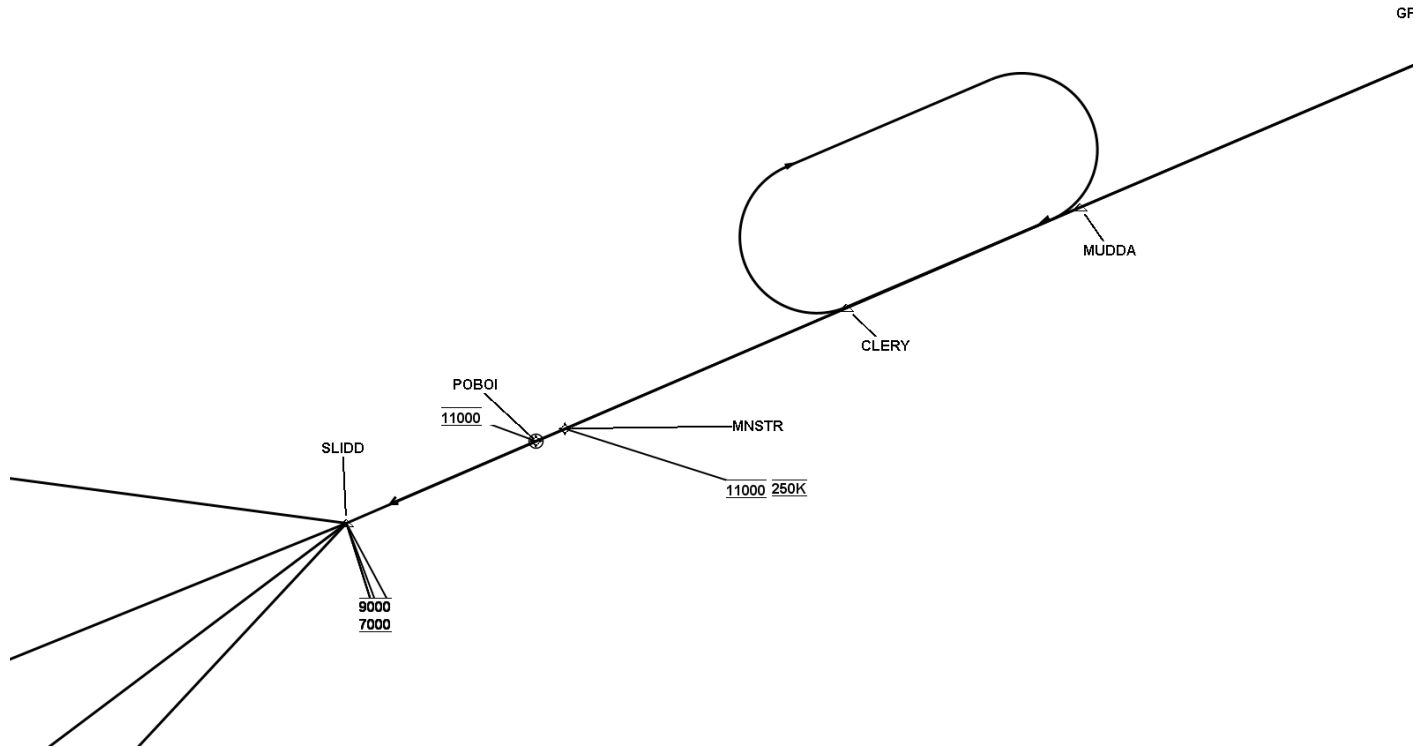


FEDERAL AVIATION ADMINISTRATION
 FLIGHT STANDARDS SERVICE
 STANDARD TERMINAL ARRIVAL (STAR)

Bearings, headings, courses, tracks and radials are magnetic. Elevations and altitudes are in feet, MSL. Altitudes are minimum altitudes unless otherwise indicated.
 Ceilings are in feet above airport elevation. Distances are in nautical miles. Visibilities are in statute miles or feet RVR unless otherwise indicated.

Arrival Name	Number	STAR Computer Code	Superseded Number	Dated	Effective Date
MNSTR (RNAV)	TWO	CLERY.MNSTR2	ONE	02/23/2023	

Graphic Depiction 2

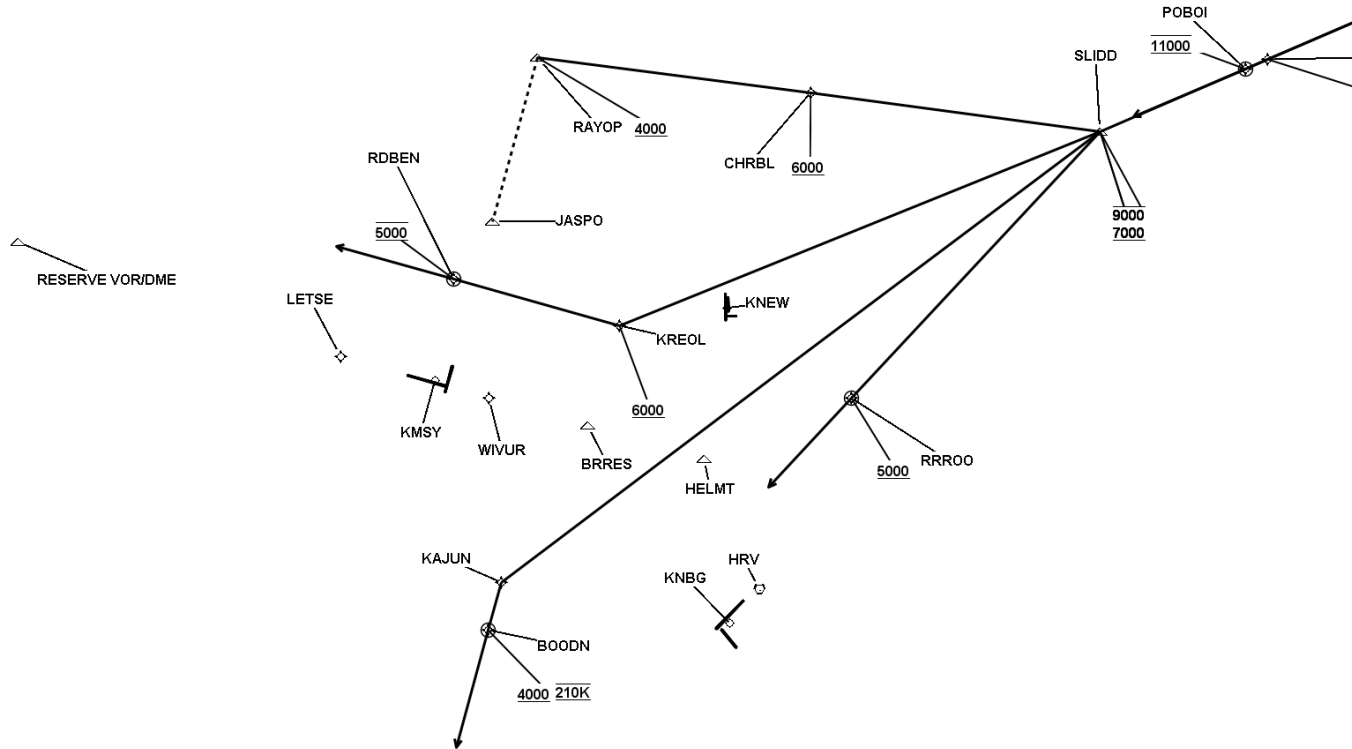


FEDERAL AVIATION ADMINISTRATION
 FLIGHT STANDARDS SERVICE
 STANDARD TERMINAL ARRIVAL (STAR)

Bearings, headings, courses, tracks and radials are magnetic. Elevations and altitudes are in feet, MSL. Altitudes are minimum altitudes unless otherwise indicated.
 Ceilings are in feet above airport elevation. Distances are in nautical miles. Visibilities are in statute miles or feet RVR unless otherwise indicated.

Arrival Name	Number	STAR Computer Code	Superseded Number	Dated	Effective Date
MNSTR (RNAV)	TWO	CLERY.MNSTR2	ONE	02/23/2023	

Graphic Depiction 3



FEDERAL AVIATION ADMINISTRATION
 FLIGHT STANDARDS SERVICE
 STAR (DATA RECORD)

Arrival Name MNSTR (RNAV)	Number TWO	STAR Computer Code CLERY.MNSTR2		Superseded Number ONE	Dated 02/23/2023	Effective Date			
<u>FIX/NAVAID</u>	<u>LAT/LONG</u>	<u>C</u>	<u>FO/FB</u>	<u>LEG TYPE</u>	<u>TC</u>	<u>DIST (NM)</u>	<u>ALTITUDE</u>	<u>SPEED</u>	<u>REMARKS</u>
En Route Transition									
GPT VORTAC	302424.59N / 0890436.41W	Y		IF					GPT.MNSTR2
MUDDA	301941.97N / 0891722.25W	Y	FB	TF	247.00	12.00			
CLERY	301632.86N / 0892552.21W	Y	FB	TF	246.90	08.00			
En Route Transition									
SJI VORTAC	304333.53N / 0882133.46W	Y		IF					SJI.MNSTR2
BUGLE	303645.60N / 0883656.37W	Y	FB	TF	242.98	14.90			
GPT VORTAC	302424.59N / 0890436.41W	Y	FB	TF	242.84	26.89			
MUDDA	301941.97N / 0891722.25W	Y	FB	TF	247.00	12.00			
CLERY	301632.86N / 0892552.21W	Y	FB	TF	246.90	08.00			
Common Route									
CLERY	301632.86N / 0892552.21W	Y		IF					CLERY.MNSTR2
MNSTR	301244.46N / 0893605.28W	Y	FB	TF	246.82	09.63	AT 11000	AT 250K	
SLIDD	300946.08N / 0894402.18W	Y	FB	TF	246.74	07.50	7000B9000		
Common Route									
CLERY	301632.86N / 0892552.21W	Y		IF					CLERY.MNSTR2
MNSTR	301244.46N / 0893605.28W	Y	FB	TF	246.82	09.63	AT 11000	AT 250K	
POBOI	301220.70N / 0893708.89W	Y	FO	TF	246.74	01.00	AT 11000		
KNBG,KNEW				FM	246.74				
Runway Transition									
SLIDD	300946.08N / 0894402.18W	Y		IF			7000B9000		
KAJUN	295118.06N / 0901224.61W	Y	FB	TF	233.33	30.76			
BOODN	294922.11N / 0901301.34W	Y	FO	TF	195.44	02.00	AT/ABOVE 4000	AT 210K	
KMSY:RWY 2				FM	195.44				



FEDERAL AVIATION ADMINISTRATION
 FLIGHT STANDARDS SERVICE
 STAR (DATA RECORD)

Arrival Name MNSTR (RNAV)	Number TWO	STAR Computer Code CLERY.MNSTR2		Superseded Number ONE	Dated 02/23/2023	Effective Date			
<u>FIX/NAVAID</u>	<u>LAT/LONG</u>	<u>C</u>	<u>FO/FB</u>	<u>LEG TYPE</u>	<u>TC</u>	<u>DIST (NM)</u>	<u>ALTITUDE</u>	<u>SPEED</u>	<u>REMARKS</u>
Runway Transition									
SLIDD	300946.08N / 0894402.18W	Y		IF			7000B9000		
KREOL	300150.66N / 0900648.25W	Y	FB	TF	248.28	21.27	AT/ABOVE 6000		
RDBEN	300344.53N / 0901439.84W	Y	FO	TF	285.54	07.08	AT 5000		
KMSY:RWY 11				FM	285.54				
Runway Transition									
SLIDD	300946.08N / 0894402.18W	Y		IF			7000B9000		
CHRBL	301121.18N / 0895745.61W	Y	FB	TF	277.63	12.00	AT/ABOVE 6000		
RAYOP	301249.47N / 0901041.91W	Y	FB	TF	277.51	11.31	AT/ABOVE 4000		
KMSY:RWY 20									
Runway Transition									
SLIDD	300946.08N / 0894402.18W	Y		IF			7000B9000		
RRROO	295851.73N / 0895548.09W	Y	FO	TF	223.23	14.92	AT/ABOVE 5000		
KMSY:RWY 29				FM	223.23				

