

DME DME Assessment Results for MNSTR2 path SJI_BOODN

Results Summary

Flyability:	Completed
DME/DME:	Completed - No Critical DMEs
Name:	Lisa A-CTR Thrysoe
Project File:	C:\Users\Lisa A-CTR Thrysoe\OneDrive - Federal Aviation Administration\Desktop\DME DME Screening\KMSY 260514\KMSY MNSTR STAR\KMSY MNSTR2 STAR 251015.tgs
Output File:	C:\Users\Lisa A-CTR Thrysoe\OneDrive - Federal Aviation Administration\Desktop\DME DME Screening\KMSY 260514\KMSY MNSTR STAR\KMSY [IFPA] MNSTR2 20251016_1621 EDT\SJI_BOODN\KMSY MNSTR2 RNAV STAR SJI BOODN 20251016_1621 EDT.pdf
Procedure Name:	MNSTR2
Software: DmeDmePlugin:	7.5.1
Date/Time:	10/16/2025 16:21 EDT
Databases:	MITRE 3DEP 3 arcsec

Failures

No Failures

Warnings

No Warnings

Informational

No Informational

Notes For Flight Check

None

Flight Plan

Name	Type	Lat/Lon	Altitude (ft)	VNAV Mode	Ground Speed (kts)	Turn Type	Leg Type
SJI	WP	N30° 43' 33.5277", W088° 21' 33.4584"	5000	VNAV	250	FLY_BY	TF
BUGLE	WP	N30° 36' 45.6000", W088° 36' 56.3700"	5000	VNAV	250	FLY_BY	TF
GPT	WP	N30° 24' 24.5928", W089° 04' 36.4124"	5000	VNAV	250	FLY_BY	TF
MUDDA	WP	N30° 19' 41.9700", W089° 17' 22.2500"	5000	VNAV	250	FLY_BY	TF
CLERY	WP	N30° 16' 32.8600", W089° 25' 52.2100"	5000	VNAV	250	FLY_BY	TF
MNSTR	WP	N30° 12' 44.4580", W089° 36' 05.2780"	5000	VNAV	250	FLY_BY	TF
SLIDD	WP	N30° 09' 46.0800", W089° 44' 02.1800"	5000	VNAV	210	FLY_BY	TF
KAJUN	WP	N29° 51' 18.0631", W090° 12' 24.6086"	4000	VNAV	210	FLY_BY	TF
BOODN	WP	N29° 49' 22.1111", W090° 13' 01.3389"	4000	VNAV	210	FLY_OVER	TF

Flyability

Flight Type:	RNAV_STAR
Selected Airport:	KMSY [IFPA]
Climb Gradient:	None assigned
Speeds:	200 Ground Speed to 11000 FT
	240 Ground Speed to 18000 FT
	260 Ground Speed to 24000 FT
	340 Ground Speed above 24000 FT
Descent During a Turn:	Allowed
VNAV Mode:	Flight Plan

DME DME Assessment Results for MNSTR2 path SJI_BOODN

DME/DME	
RNP:	RNP 2
Flight Mode:	Manual
Line of Sight (DTED Level 0 Max):	Evaluated
Inertial Drift:	Enabled
Initial Drift:	0.558 NM
INS Drift Rate:	8.0 NM/Hour
Range Mode:	OSV
RNP Edges:	Evaluated
Min DME Range:	3.0 NM
DME Types:	DME, VOR-DME, VORTAC, TACAN
DME Include Angles:	30 to 150
Critical DMEs:	Allowed
DoD Facilities:	Not included
Foreign Facilities:	Not included
High DMEs:	Included
Low DMEs:	Included
Terminal DMEs:	Included
Flight Check DMEs:	Not selected
Higher Altitudes:	Not Evaluated
Near Maximum Altitude:	Not Evaluated
Automatic ESVs:	Not enabled
Disabled DMEs:	None

DME/DME (Continued)										
DMEs Used										
#	Name	Lat/Lon	MAGVAR	Range	Type	Source	Critical	Status	Time	Distance
1	LBY	N31° 25' 07.2578", W089° 20' 15.3672"	5.0 E	40	L		NO	Enabled	53.5 %	56.5 %
2	RQR	N30° 05' 15.0005", W090° 35' 19.0509"	2.0 E	40	L		NO	Enabled	24.3 %	21.5 %
3	SJI	N30° 43' 33.5277", W088° 21' 33.4584"	5.0 E	130	H		NO	Enabled	30 %	31.6 %
4	PCU	N30° 33' 40.1975", W089° 43' 49.7574"	5.0 E	40	L		NO	Enabled	52.4 %	52.2 %
5	TBD	N29° 39' 51.5600", W090° 49' 44.7350"	2.0 E	130	DH		NO	Enabled	43.5 %	40.3 %
6	BFM	N30° 36' 45.7958", W088° 03' 19.7765"	4.0 E	40	L		NO	Enabled	21.4 %	22.6 %
7	GPT	N30° 24' 24.5928", W089° 04' 36.4124"	2.0 E	40	L		NO	Enabled	62.5 %	65.6 %
8	GCV	N31° 05' 52.6550", W088° 29' 10.0640"	5.0 E	130	H		NO	Enabled	21.5 %	22.6 %
9	HRV	N29° 51' 00.7010", W090° 00' 10.7430"	2.0 E	130	H		NO	Enabled	66.3 %	67.4 %
10	MCB	N31° 18' 16.0300", W090° 15' 29.5310"	3.0 E	130	H		NO	Enabled	14 %	14.7 %

DME DME Assessment Results for MNSTR2 path SJI_BOODN

Flight Check DME Selection						
Distance [NM]	Selected DMEs					Alternate
0.0	GPT	GCV	LBY	BFM		
1.9	GPT	GCV	BFM			
2.0	GPT	GCV	LBY	BFM		
4.5	LBY	GPT	BFM	GCV	SJI	
25.3	LBY	GPT	SJI	HRV	GCV	
25.4	LBY	GPT	SJI	HRV		
38.2	LBY	SJI	HRV			
38.8	LBY	SJI	HRV	PCU		
39.9	LBY	HRV	PCU			
45.6	LBY	GPT	HRV	PCU		
62.6	PCU	HRV	GPT	MCB	LBY	
63.3	PCU	HRV	GPT	MCB		
66.6	PCU	GPT	HRV	MCB	TBD	
79.2	PCU	GPT	TBD			
80.8	PCU	TBD				
87.7	PCU	RQR	HRV	TBD		
97.2	HRV	RQR	TBD			
100.0	TBD	RQR				
102.9	HRV	TBD	RQR			
103.6	TBD	RQR				
109.7	TBD	RQR	HRV			

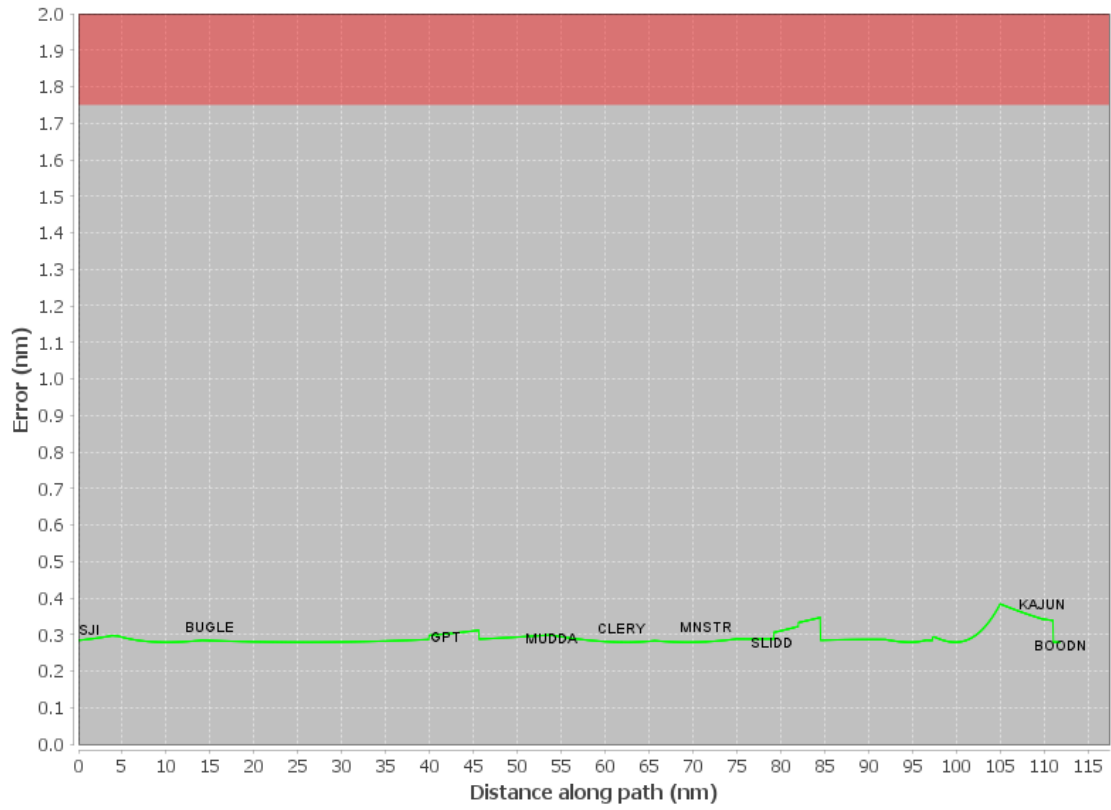
Inertial Drift Segments			
#	Start Location	End Location	Length [NM]

Available DMEs by Waypoints			
Waypoint Before	Waypoint After	DME List	Suggested DMEs
SJI	BUGLE	LBY, SJI, BFM, GPT, GCV	
BUGLE	GPT	LBY, SJI, PCU, BFM, GPT, GCV, HRV	
GPT	MUDDA	LBY, PCU, GPT, HRV	
MUDDA	CLERY	LBY, PCU, GPT, HRV	
CLERY	MNSTR	LBY, PCU, TBD, GPT, HRV, MCB	
MNSTR	SLIDD	PCU, TBD, GPT, HRV, MCB	
SLIDD	KAJUN	RQR, PCU, TBD, GPT, MCB, HRV	
KAJUN	BOODN	RQR, TBD, HRV	

User Data Files								
#	File Name							
None								
User DMEs								
#	Name	Lat/Lon	MAGVAR	Range	Elevation [ft]	Frequency	Replaces	Status
1	LBY FAA 703988-15 LBY	N31° 25' 07.2578", W089° 20' 15.3672"	5.0 E	40	290	110.6	LBY FAA 703988-15	
ESV:		Bearing [True]: 126.0° to 188.0° Bearing [Mag]: 121.0° to 183.0°				Arc Distance: Out to 73.0 NM Altitude: 4700.0 to 18300.0 ft		
2	GPT FAA 698103-2 GPT	N30° 24' 24.5928", W089° 04' 36.4124"	2.0 E	40	24.9	109.0	GPT FAA 698103-2	
ESV:		Bearing [True]: 55.0° to 70.0° Bearing [Mag]: 53.0° to 68.0°				Arc Distance: Out to 42.0 NM Altitude: 4900.0 to 18100.0 ft		
3	HRV FAA 941734-19 HRV	N29° 51' 00.7010", W090° 00' 10.7430"	2.0 E	130	2.3	114.1	HRV FAA 941734-19	
ESV:		Bearing [True]: 42.0° to 61.0° Bearing [Mag]: 40.0° to 59.0°				Arc Distance: Out to 82.0 NM Altitude: 4700.0 to 14600.0 ft		
4	MCB FAA 704246-30 MCB	N31° 18' 16.0300", W090° 15' 29.5310"	3.0 E	130	440	116.7	MCB FAA 704246-30	
ESV:		Bearing [True]: 145.0° to 160.0° Bearing [Mag]: 142.0° to 157.0°				Arc Distance: Out to 79.0 NM Altitude: 4900.0 to 15000.0 ft		

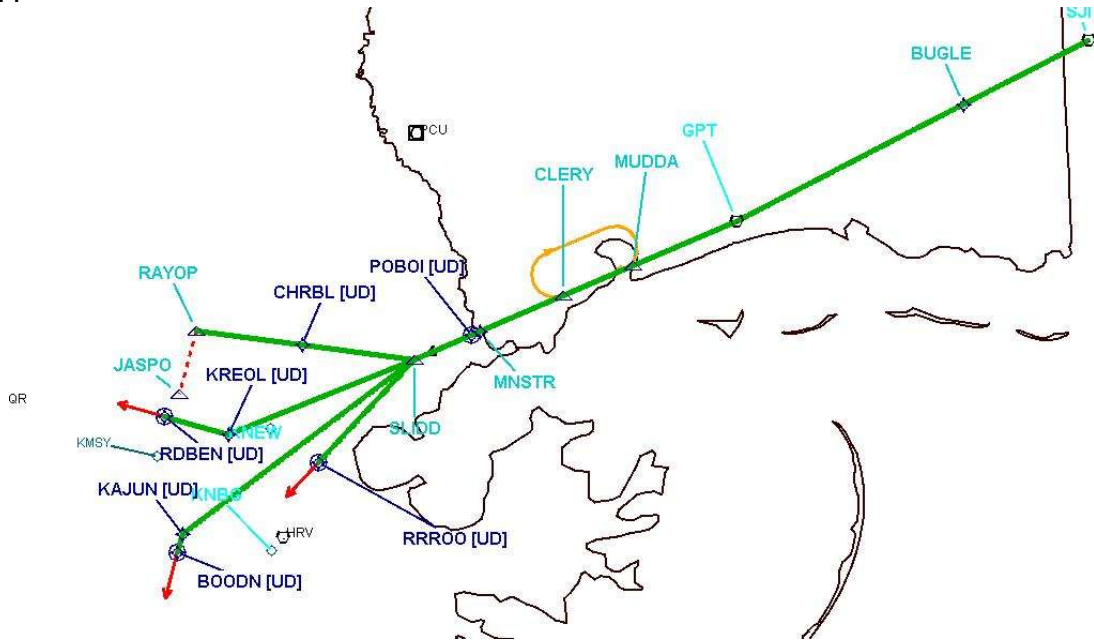
DME DME Assessment Results for MNSTR2 path SJI_BOODN

DME Error



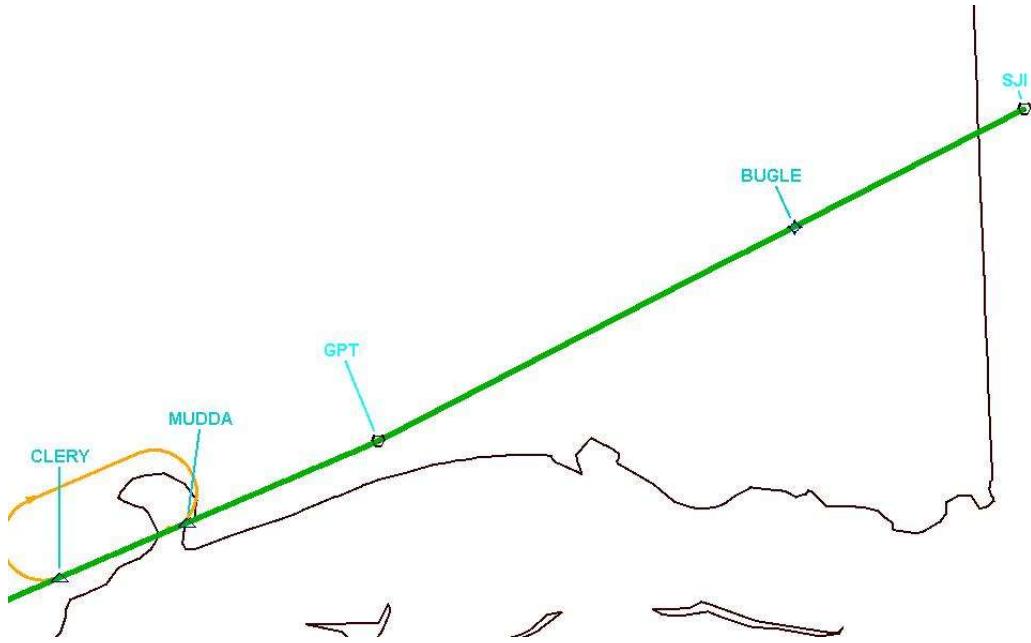
DME DME Assessment Results for MNSTR2 path SJI_BOODN

Graphic Depiction 1



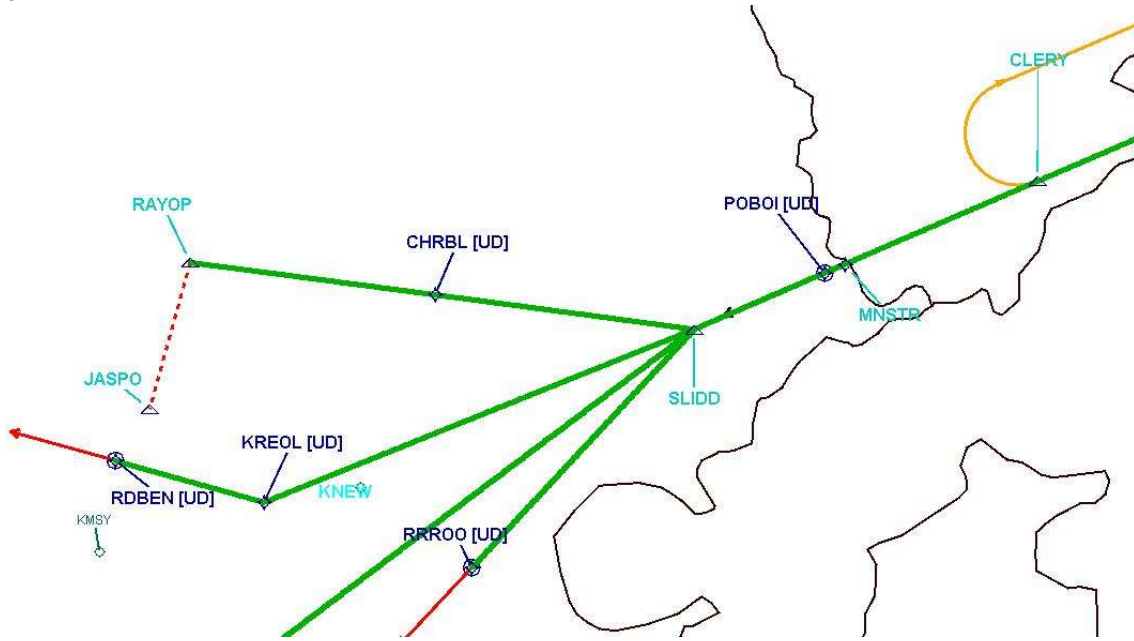
DME DME Assessment Results for MNSTR2 path SJI_BOODN

Graphic Depiction 2



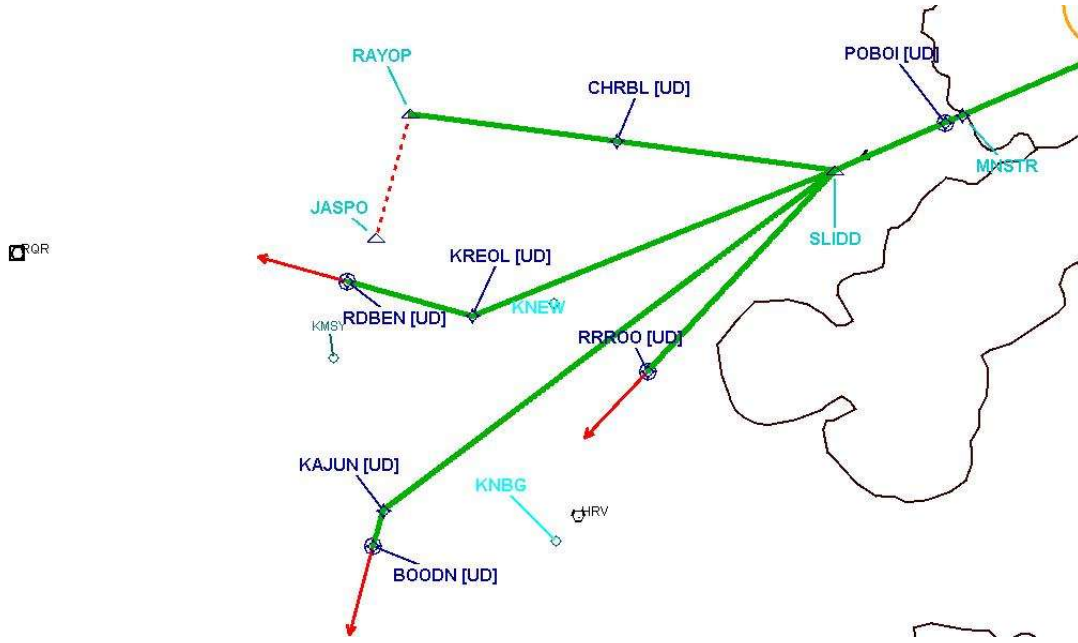
DME DME Assessment Results for MNSTR2 path SJI_BOODN

Graphic Depiction 3



DME DME Assessment Results for MNSTR2 path SJI_BOODN

Graphic Depiction 4



DME DME Assessment Results for MNSTR2 path MNSTR_POBOI

Results Summary

Flyability:	Completed
DME/DME:	Completed - No Critical DMEs
Name:	Lisa A-CTR Thrysoe
Project File:	C:\Users\Lisa A-CTR Thrysoe\OneDrive - Federal Aviation Administration\Desktop\DME DME Screening\KMSY 260514\KMSY MNSTR STAR\KMSY MNSTR2 STAR 251015.tgs
Output File:	C:\Users\Lisa A-CTR Thrysoe\OneDrive - Federal Aviation Administration\Desktop\DME DME Screening\KMSY 260514\KMSY MNSTR STAR\KMSY [IFPA] MNSTR2 20251016_1621 EDT\MNSTR_POBOI\KMSY MNSTR2 RNAV STAR MNSTR POBOI 20251016_1621 EDT.pdf
Procedure Name:	MNSTR2
Software: DmeDmePlugin:	7.5.1
Date/Time:	10/16/2025 16:21 EDT
Databases:	MITRE 3DEP 3 arcsec

Failures

No Failures

Warnings

No Warnings

Informational

No Informational

Notes For Flight Check

None

Flight Plan

Name	Type	Lat/Lon	Altitude (ft)	VNAV Mode	Ground Speed (kts)	Turn Type	Leg Type
MNSTR	WP	N30° 12' 44.4580", W089° 36' 05.2780"	5000	VNAV	250	FLY_BY	TF
POBOI	WP	N30° 12' 20.7021", W089° 37' 08.8929"	5000	VNAV	200	FLY_OVER	TF

Flyability

Flight Type:	RNAV_STAR
Selected Airport:	KMSY [IFPA]
Climb Gradient:	None assigned
Speeds:	200 Ground Speed to 11000 FT
	240 Ground Speed to 18000 FT
	260 Ground Speed to 24000 FT
	340 Ground Speed above 24000 FT
Descent During a Turn:	Allowed
VNAV Mode:	Flight Plan

DME DME Assessment Results for MNSTR2 path MNSTR_POBOI

DME/DME	
RNP:	RNP 2
Flight Mode:	Manual
Line of Sight (DTED Level 0 Max):	Evaluated
Inertial Drift:	Enabled
Initial Drift:	0.558 NM
INS Drift Rate:	8.0 NM/Hour
Range Mode:	OSV
RNP Edges:	Evaluated
Min DME Range:	3.0 NM
DME Types:	DME, VOR-DME, VORTAC, TACAN
DME Include Angles:	30 to 150
Critical DMEs:	Allowed
DoD Facilities:	Not included
Foreign Facilities:	Not included
High DMEs:	Included
Low DMEs:	Included
Terminal DMEs:	Included
Flight Check DMEs:	Not selected
Higher Altitudes:	Not Evaluated
Near Maximum Altitude:	Not Evaluated
Automatic ESVs:	Not enabled
Disabled DMEs:	None

DME/DME (Continued)										
DMEs Used										
#	Name	Lat/Lon	MAGVAR	Range	Type	Source	Critical	Status	Time	Distance
1	PCU	N30° 33' 40.1975", W089° 43' 49.7574"	5.0 E	40	L		NO	Enabled	100 %	100 %
2	TBD	N29° 39' 51.5600", W090° 49' 44.7350"	2.0 E	130	DH		NO	Enabled	100 %	100 %
3	GPT	N30° 24' 24.5928", W089° 04' 36.4124"	2.0 E	40	L		NO	Enabled	100 %	100 %
4	HRV	N29° 51' 00.7010", W090° 00' 10.7430"	2.0 E	130	H		NO	Enabled	100 %	100 %
5	MCB	N31° 18' 16.0300", W090° 15' 29.5310"	3.0 E	130	H		NO	Enabled	100 %	100 %

Flight Check DME Selection						
Distance [NM]	Selected DMEs					Alternate
0.0	PCU	GPT	MCB	TBD	HRV	

Inertial Drift Segments			
#	Start Location	End Location	Length [NM]

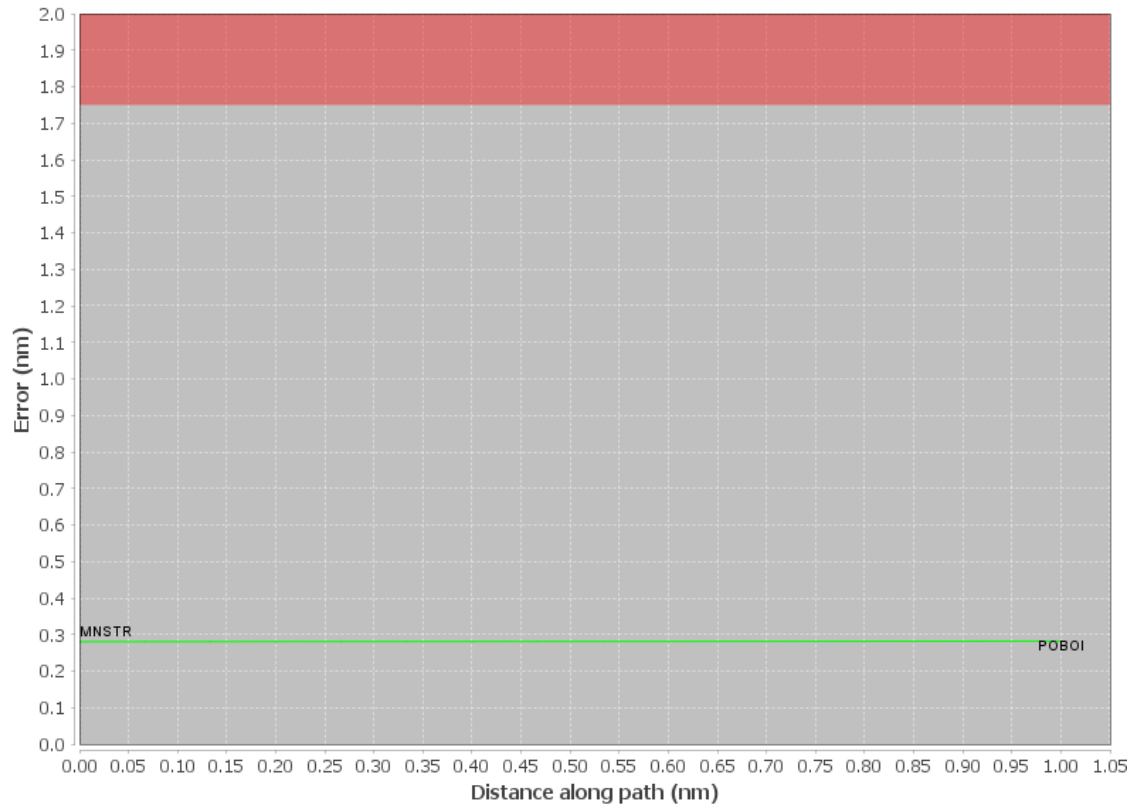
Available DMEs by Waypoints			
Waypoint Before	Waypoint After	DME List	Suggested DMEs
MNSTR	POBOI	PCU, TBD, GPT, HRV, MCB	

DME DME Assessment Results for MNSTR2 path MNSTR_POBOI

User Data Files								
#	File Name							
None								
User DMEs								
#	Name	Lat/Lon	MAGVAR	Range	Elevation [ft]	Frequency	Replaces	Status
1	LBY FAA 703988-15 LBY	N31° 25' 07.2578", W089° 20' 15.3672"	5.0 E	40	290	110.6	LBY FAA 703988-15	
ESV:		Bearing [True]: 126.0° to 188.0° Bearing [Mag]: 121.0° to 183.0°				Arc Distance: Out to 73.0 NM Altitude: 4700.0 to 18300.0 ft		
2	GPT FAA 698103-2 GPT	N30° 24' 24.5928", W089° 04' 36.4124"	2.0 E	40	24.9	109.0	GPT FAA 698103-2	
ESV:		Bearing [True]: 55.0° to 70.0° Bearing [Mag]: 53.0° to 68.0°				Arc Distance: Out to 42.0 NM Altitude: 4900.0 to 18100.0 ft		
3	HRV FAA 941734-19 HRV	N29° 51' 00.7010", W090° 00' 10.7430"	2.0 E	130	2.3	114.1	HRV FAA 941734-19	
ESV:		Bearing [True]: 42.0° to 61.0° Bearing [Mag]: 40.0° to 59.0°				Arc Distance: Out to 82.0 NM Altitude: 4700.0 to 14600.0 ft		
4	MCB FAA 704246-30 MCB	N31° 18' 16.0300", W090° 15' 29.5310"	3.0 E	130	440	116.7	MCB FAA 704246-30	
ESV:		Bearing [True]: 145.0° to 160.0° Bearing [Mag]: 142.0° to 157.0°				Arc Distance: Out to 79.0 NM Altitude: 4900.0 to 15000.0 ft		

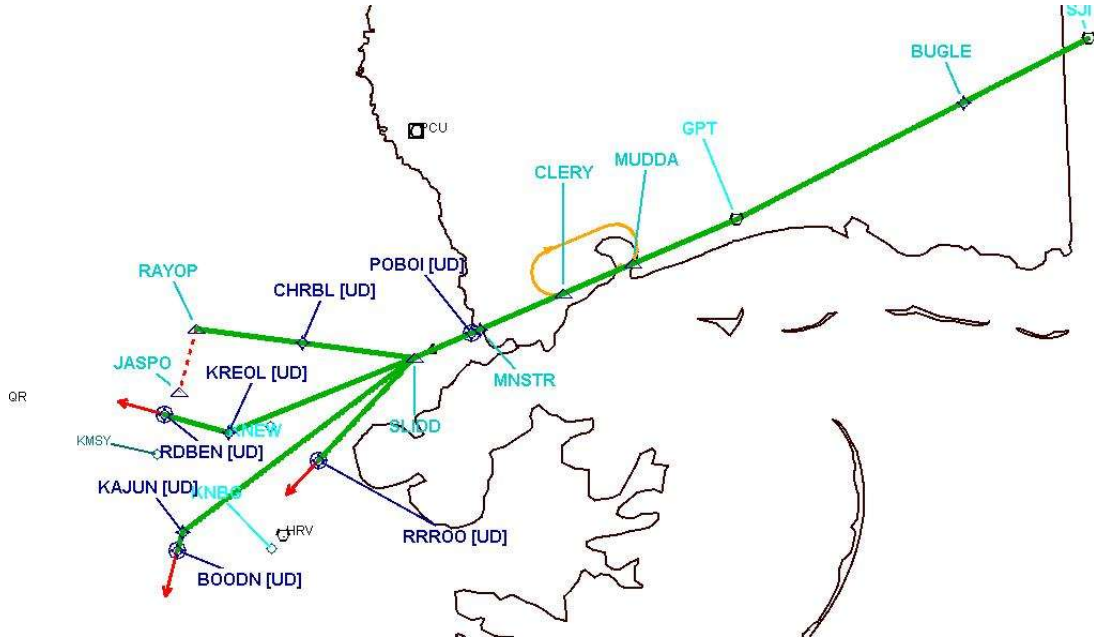
DME DME Assessment Results for MNSTR2 path MNSTR_POBOI

DME Error



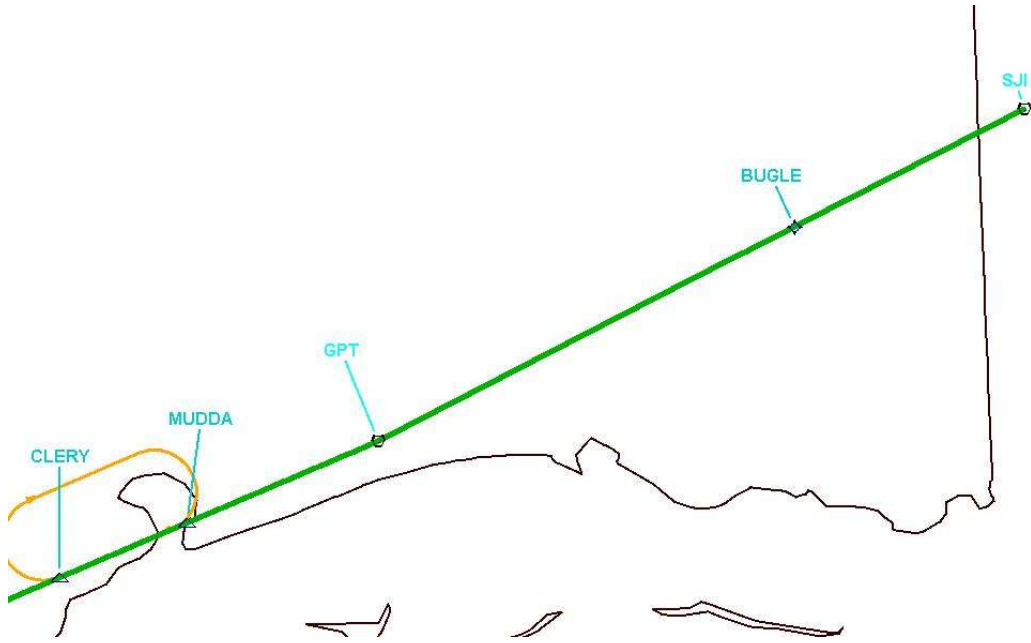
DME DME Assessment Results for MNSTR2 path MNSTR_POBOI

Graphic Depiction 1



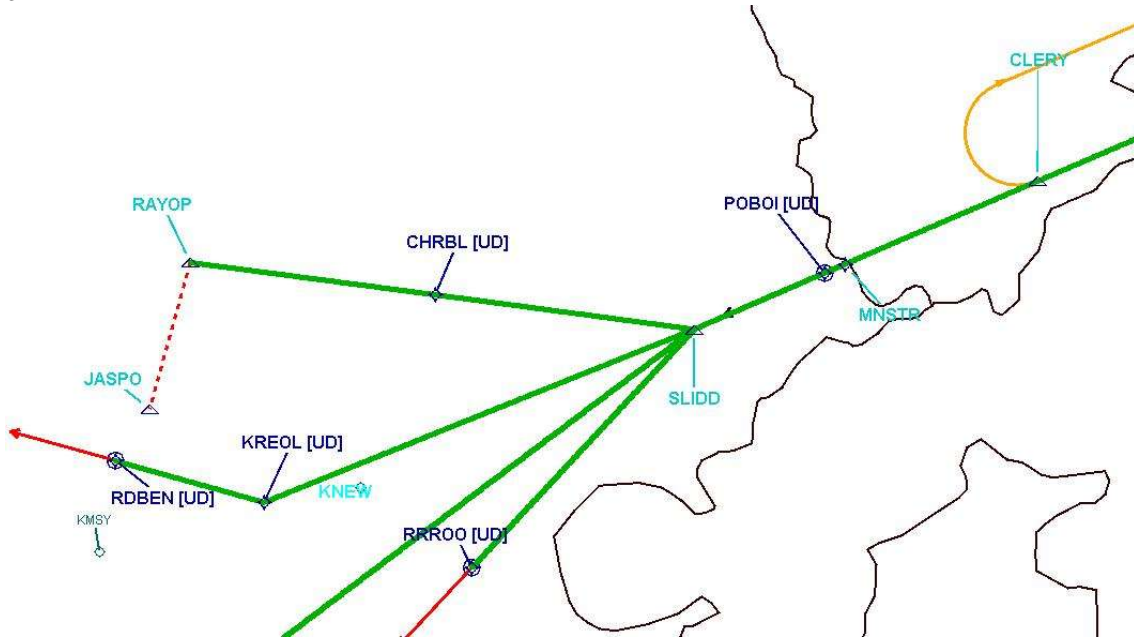
DME DME Assessment Results for MNSTR2 path MNSTR_POBOI

Graphic Depiction 2



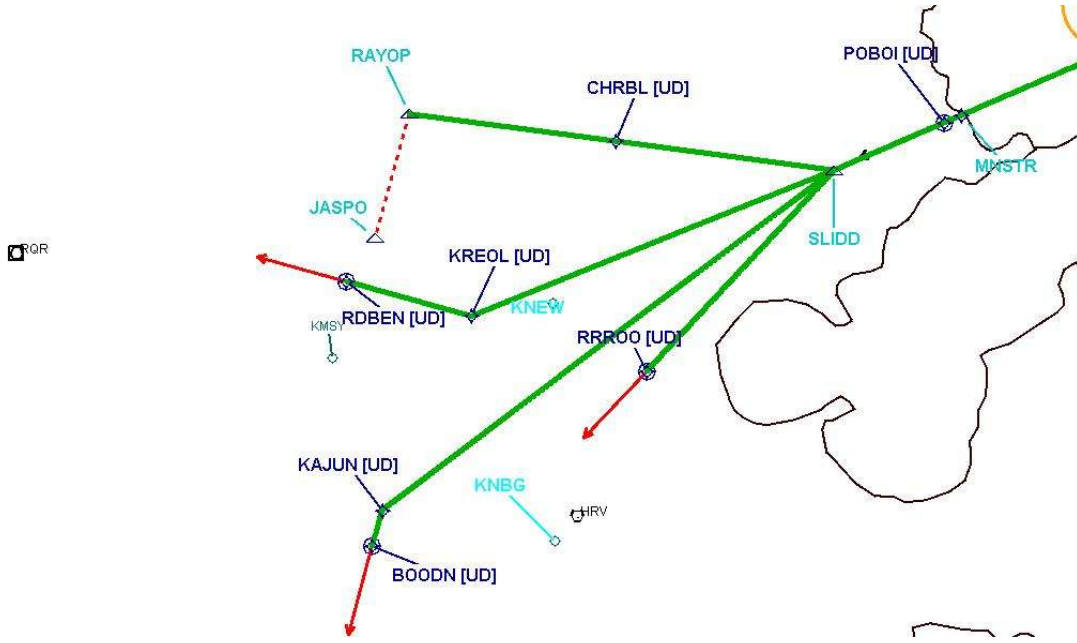
DME DME Assessment Results for MNSTR2 path MNSTR_POBOI

Graphic Depiction 3



DME DME Assessment Results for MNSTR2 path MNSTR_POBOI

Graphic Depiction 4



DME DME Assessment Results for MNSTR2 path SLIDD_RAYOP

Results Summary	
Flyability:	Completed
DME/DME:	Completed - No Critical DMEs
Name:	Lisa A-CTR Thrysoe
Project File:	C:\Users\Lisa A-CTR Thrysoe\OneDrive - Federal Aviation Administration\Desktop\DME DME Screening\KMSY 260514\KMSY MNSTR STAR\KMSY MNSTR2 STAR 251015.tgs
Output File:	C:\Users\Lisa A-CTR Thrysoe\OneDrive - Federal Aviation Administration\Desktop\DME DME Screening\KMSY 260514\KMSY MNSTR STAR\KMSY [IFPA] MNSTR2 20251016_1621 EDT\SLIDD_RAYOP\KMSY MNSTR2 RNAV STAR SLIDD RAYOP 20251016_1621 EDT.pdf
Procedure Name:	MNSTR2
Software: DmeDmePlugin:	7.5.1
Date/Time:	10/16/2025 16:21 EDT
Databases:	MITRE 3DEP 3 arcsec

Failures
No Failures

Warnings
No Warnings

Informational
No Informational

Notes For Flight Check
None

Flight Plan							
Name	Type	Lat/Lon	Altitude (ft)	VNAV Mode	Ground Speed (kts)	Turn Type	Leg Type
SLIDD	WP	N30° 09' 46.0800", W089° 44' 02.1800"	5000	VNAV	210	FLY_BY	TF
CHRBL	WP	N30° 11' 21.1768", W089° 57' 45.6071"	4000	VNAV	200	FLY_BY	TF
RAYOP	WP	N30° 12' 49.4700", W090° 10' 41.9100"	4000	VNAV	200	FLY_BY	TF

Flyability	
Flight Type:	RNAV_STAR
Selected Airport:	KMSY [IFPA]
Climb Gradient:	None assigned
Speeds:	200 Ground Speed to 11000 FT
	240 Ground Speed to 18000 FT
	260 Ground Speed to 24000 FT
	340 Ground Speed above 24000 FT
Descent During a Turn:	Allowed
VNAV Mode:	Flight Plan

DME DME Assessment Results for MNSTR2 path SLIDD_RAYOP

DME/DME	
RNP:	RNP 2
Flight Mode:	Manual
Line of Sight (DTED Level 0 Max):	Evaluated
Inertial Drift:	Enabled
Initial Drift:	0.558 NM
INS Drift Rate:	8.0 NM/Hour
Range Mode:	OSV
RNP Edges:	Evaluated
Min DME Range:	3.0 NM
DME Types:	DME, VOR-DME, VORTAC, TACAN
DME Include Angles:	30 to 150
Critical DMEs:	Allowed
DoD Facilities:	Not included
Foreign Facilities:	Not included
High DMEs:	Included
Low DMEs:	Included
Terminal DMEs:	Included
Flight Check DMEs:	Not selected
Higher Altitudes:	Not Evaluated
Near Maximum Altitude:	Not Evaluated
Automatic ESVs:	Not enabled
Disabled DMEs:	None

DME/DME (Continued)										
DMEs Used										
#	Name	Lat/Lon	MAGVAR	Range	Type	Source	Critical	Status	Time	Distance
1	RQR	N30° 05' 15.0005", W090° 35' 19.0509"	2.0 E	40	L		NO	Enabled	74.6 %	74 %
2	PCU	N30° 33' 40.1975", W089° 43' 49.7574"	5.0 E	40	L		NO	Enabled	100 %	100 %
3	TBD	N29° 39' 51.5600", W090° 49' 44.7350"	2.0 E	130	DH		NO	Enabled	100 %	100 %
4	GPT	N30° 24' 24.5928", W089° 04' 36.4124"	2.0 E	40	L		NO	Enabled	3.7 %	3.7 %
5	HRV	N29° 51' 00.7010", W090° 00' 10.7430"	2.0 E	130	H		NO	Enabled	88.8 %	88.5 %
6	MCB	N31° 18' 16.0300", W090° 15' 29.5310"	3.0 E	130	H		NO	Enabled	0.7 %	0.7 %

Flight Check DME Selection						
Distance [NM]	Selected DMEs					Alternate
0.0	MCB	GPT	TBD	PCU	HRV	
0.2	PCU	GPT	TBD	HRV		
0.8	PCU	GPT	TBD			
0.9	PCU	TBD				
3.4	PCU	TBD	HRV			
6.1	PCU	RQR	HRV	TBD		

Inertial Drift Segments			
#	Start Location	End Location	Length [NM]

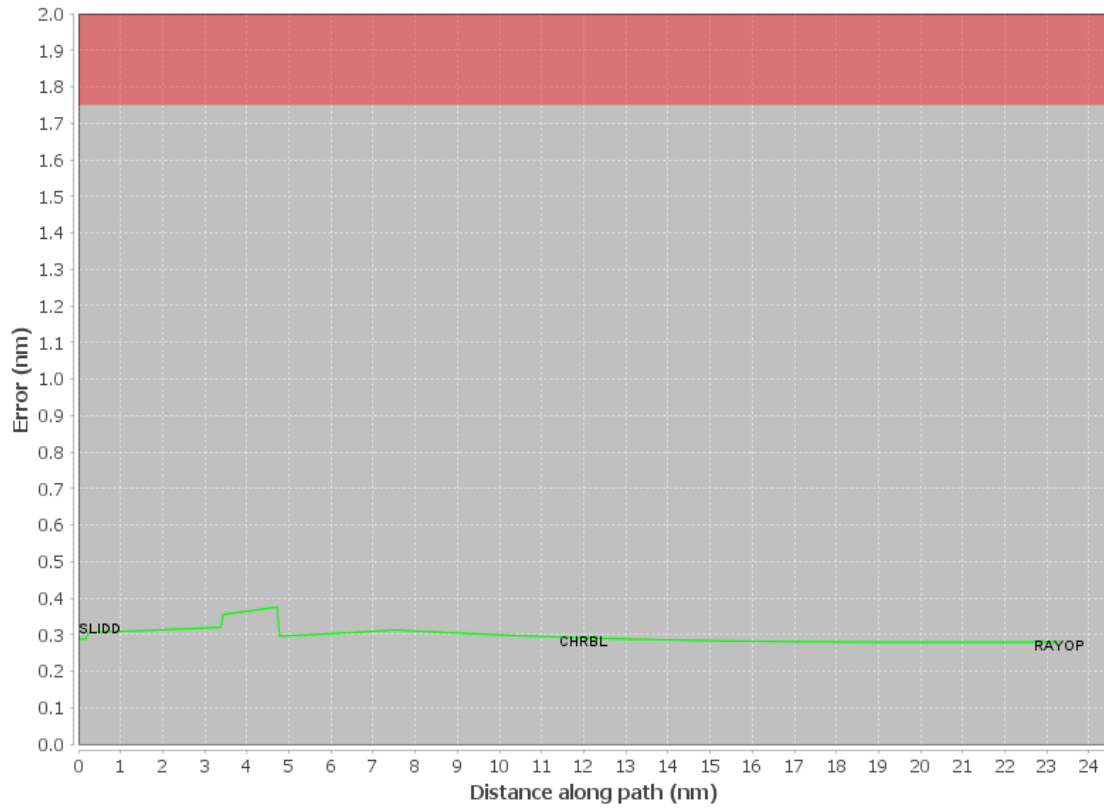
Available DMEs by Waypoints			
Waypoint Before	Waypoint After	DME List	Suggested DMEs
SLIDD	CHRBL	RQR, PCU, TBD, GPT, HRV, MCB	
CHRBL	RAYOP	RQR, PCU, TBD, HRV	

DME DME Assessment Results for MNSTR2 path SLIDD_RAYOP

User Data Files								
#	File Name							
None								
User DMEs								
#	Name	Lat/Lon	MAGVAR	Range	Elevation [ft]	Frequency	Replaces	Status
1	LBY FAA 703988-15 LBY	N31° 25' 07.2578", W089° 20' 15.3672"	5.0 E	40	290	110.6	LBY FAA 703988-15	
ESV:		Bearing [True]: 126.0° to 188.0° Bearing [Mag]: 121.0° to 183.0°				Arc Distance: Out to 73.0 NM Altitude: 4700.0 to 18300.0 ft		
2	GPT FAA 698103-2 GPT	N30° 24' 24.5928", W089° 04' 36.4124"	2.0 E	40	24.9	109.0	GPT FAA 698103-2	
ESV:		Bearing [True]: 55.0° to 70.0° Bearing [Mag]: 53.0° to 68.0°				Arc Distance: Out to 42.0 NM Altitude: 4900.0 to 18100.0 ft		
3	HRV FAA 941734-19 HRV	N29° 51' 00.7010", W090° 00' 10.7430"	2.0 E	130	2.3	114.1	HRV FAA 941734-19	
ESV:		Bearing [True]: 42.0° to 61.0° Bearing [Mag]: 40.0° to 59.0°				Arc Distance: Out to 82.0 NM Altitude: 4700.0 to 14600.0 ft		
4	MCB FAA 704246-30 MCB	N31° 18' 16.0300", W090° 15' 29.5310"	3.0 E	130	440	116.7	MCB FAA 704246-30	
ESV:		Bearing [True]: 145.0° to 160.0° Bearing [Mag]: 142.0° to 157.0°				Arc Distance: Out to 79.0 NM Altitude: 4900.0 to 15000.0 ft		

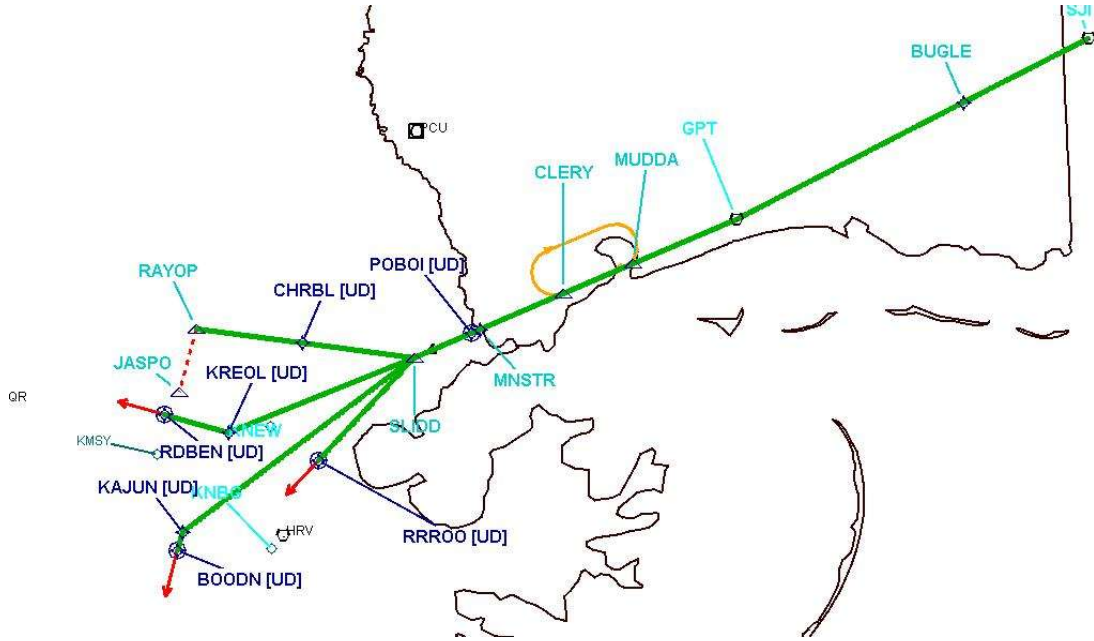
DME DME Assessment Results for MNSTR2 path SLIDD_RAYOP

DME Error



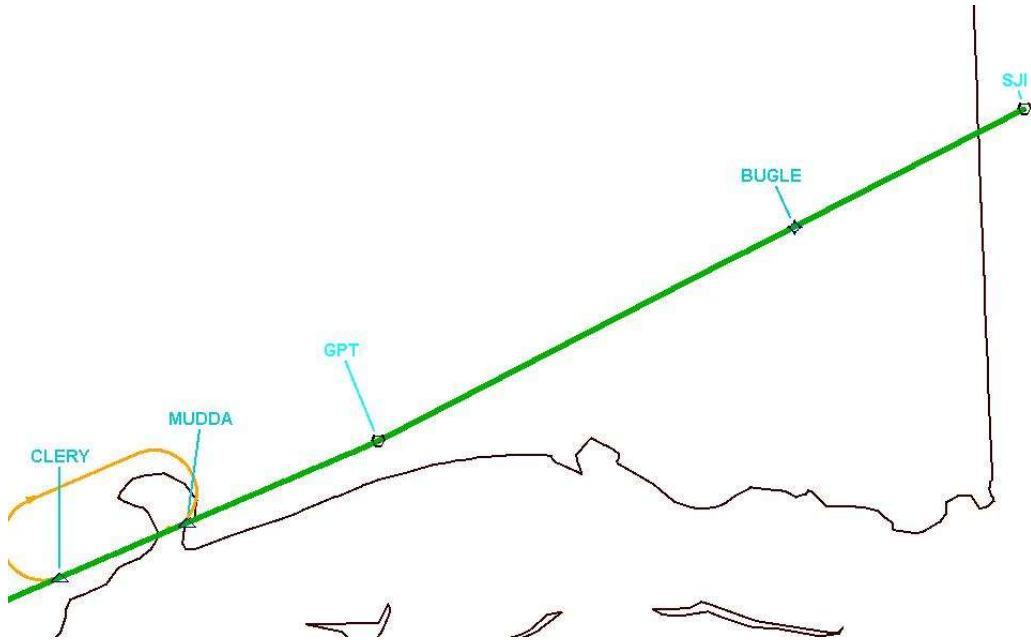
DME DME Assessment Results for MNSTR2 path SLIDD_RAYOP

Graphic Depiction 1



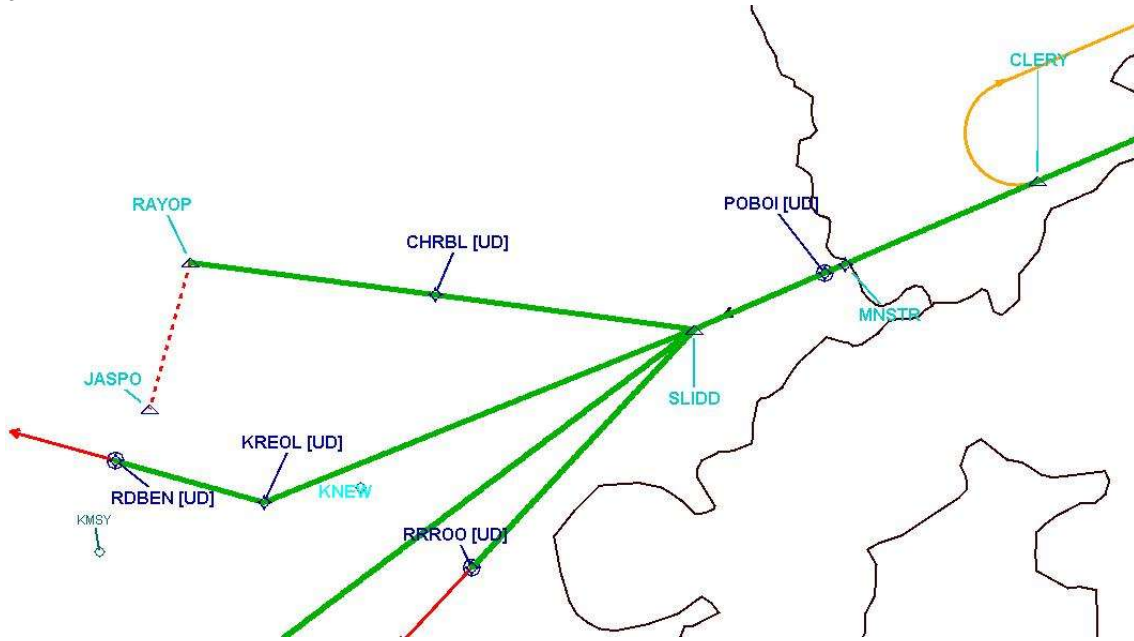
DME DME Assessment Results for MNSTR2 path SLIDD_RAYOP

Graphic Depiction 2



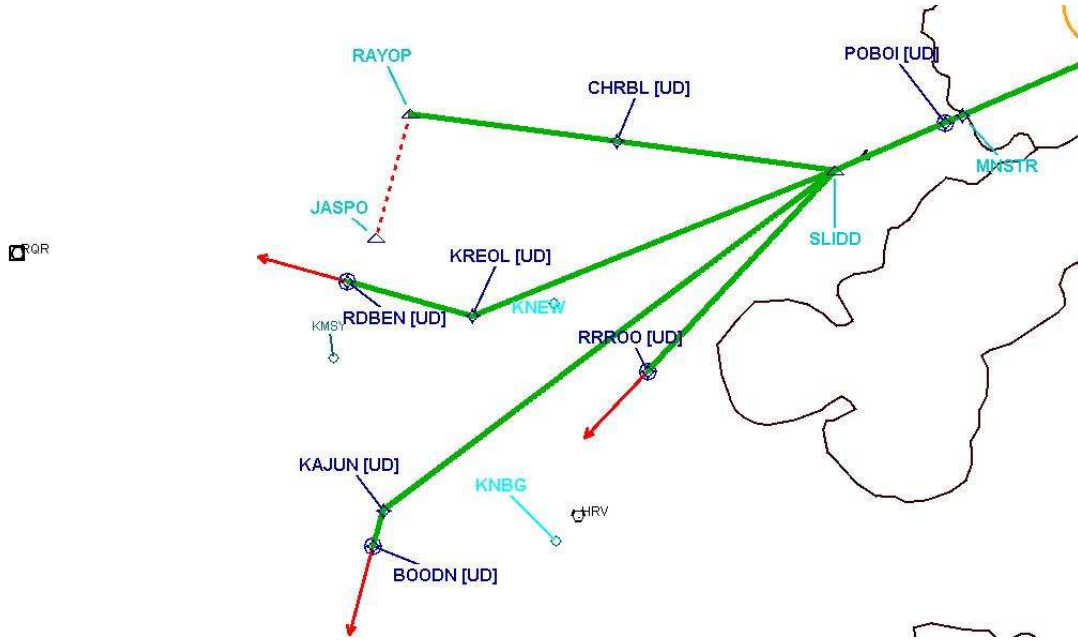
DME DME Assessment Results for MNSTR2 path SLIDD_RAYOP

Graphic Depiction 3



DME DME Assessment Results for MNSTR2 path SLIDD_RAYOP

Graphic Depiction 4



DME DME Assessment Results for MNSTR2 path SLIDD_RDBEN

Results Summary	
Flyability:	Completed
DME/DME:	Completed - No Critical DMEs
Name:	Lisa A-CTR Thrysoe
Project File:	C:\Users\Lisa A-CTR Thrysoe\OneDrive - Federal Aviation Administration\Desktop\DME DME Screening\KMSY 260514\KMSY MNSTR STAR\KMSY MNSTR2 STAR 251015.tgs
Output File:	C:\Users\Lisa A-CTR Thrysoe\OneDrive - Federal Aviation Administration\Desktop\DME DME Screening\KMSY 260514\KMSY MNSTR STAR\KMSY [IFPA] MNSTR2 20251016_1621 EDT\SLIDD_RDBEN\KMSY MNSTR2 RNAV STAR SLIDD RDBEN 20251016_1621 EDT.pdf
Procedure Name:	MNSTR2
Software: DmeDmePlugin:	7.5.1
Date/Time:	10/16/2025 16:21 EDT
Databases:	MITRE 3DEP 3 arcsec

Failures
No Failures

Warnings
No Warnings

Informational
No Informational

Notes For Flight Check
None

Flight Plan							
Name	Type	Lat/Lon	Altitude (ft)	VNAV Mode	Ground Speed (kts)	Turn Type	Leg Type
SLIDD	WP	N30° 09' 46.0800", W089° 44' 02.1800"	5000	VNAV	210	FLY_BY	TF
KREOL	WP	N30° 01' 50.6609", W090° 06' 48.2502"	4000	VNAV	200	FLY_BY	TF
RDBEN	WP	N30° 03' 44.5277", W090° 14' 39.8371"	4000	VNAV	200	FLY_OVER	TF

Flyability	
Flight Type:	RNAV_STAR
Selected Airport:	KMSY [IFPA]
Climb Gradient:	None assigned
Speeds:	200 Ground Speed to 11000 FT
	240 Ground Speed to 18000 FT
	260 Ground Speed to 24000 FT
	340 Ground Speed above 24000 FT
Descent During a Turn:	Allowed
VNAV Mode:	Flight Plan

DME DME Assessment Results for MNSTR2 path SLIDD_RDBEN

DME/DME	
RNP:	RNP 2
Flight Mode:	Manual
Line of Sight (DTED Level 0 Max):	Evaluated
Inertial Drift:	Enabled
Initial Drift:	0.558 NM
INS Drift Rate:	8.0 NM/Hour
Range Mode:	OSV
RNP Edges:	Evaluated
Min DME Range:	3.0 NM
DME Types:	DME, VOR-DME, VORTAC, TACAN
DME Include Angles:	30 to 150
Critical DMEs:	Allowed
DoD Facilities:	Not included
Foreign Facilities:	Not included
High DMEs:	Included
Low DMEs:	Included
Terminal DMEs:	Included
Flight Check DMEs:	Not selected
Higher Altitudes:	Not Evaluated
Near Maximum Altitude:	Not Evaluated
Automatic ESVs:	Not enabled
Disabled DMEs:	None

DME/DME (Continued)										
DMEs Used										
#	Name	Lat/Lon	MAGVAR	Range	Type	Source	Critical	Status	Time	Distance
1	RQR	N30° 05' 15.0005", W090° 35' 19.0509"	2.0 E	40	L		NO	Enabled	77.7 %	77.4 %
2	PCU	N30° 33' 40.1975", W089° 43' 49.7574"	5.0 E	40	L		NO	Enabled	73.9 %	74.8 %
3	TBD	N29° 39' 51.5600", W090° 49' 44.7350"	2.0 E	130	DH		NO	Enabled	100 %	100 %
4	GPT	N30° 24' 24.5928", W089° 04' 36.4124"	2.0 E	40	L		NO	Enabled	9.1 %	9.3 %
5	MCB	N31° 18' 16.0300", W090° 15' 29.5310"	3.0 E	130	H		NO	Enabled	0.6 %	0.6 %
6	HRV	N29° 51' 00.7010", W090° 00' 10.7430"	2.0 E	130	H		NO	Enabled	78.3 %	78 %

Flight Check DME Selection						
Distance [NM]	Selected DMEs					Alternate
0.0	MCB	GPT	TBD	PCU	HRV	
0.2	PCU	GPT	TBD			
2.7	PCU	TBD				
6.4	PCU	RQR	HRV	TBD		
21.3	HRV	TBD	RQR			

Inertial Drift Segments			
#	Start Location	End Location	Length [NM]

Available DMEs by Waypoints			
Waypoint Before	Waypoint After	DME List	Suggested DMEs
SLIDD	KREOL	RQR, PCU, TBD, GPT, MCB, HRV	
KREOL	RDBEN	RQR, TBD, HRV	

DME DME Assessment Results for MNSTR2 path SLIDD_RDBEN

User Data Files

#	File Name
	None

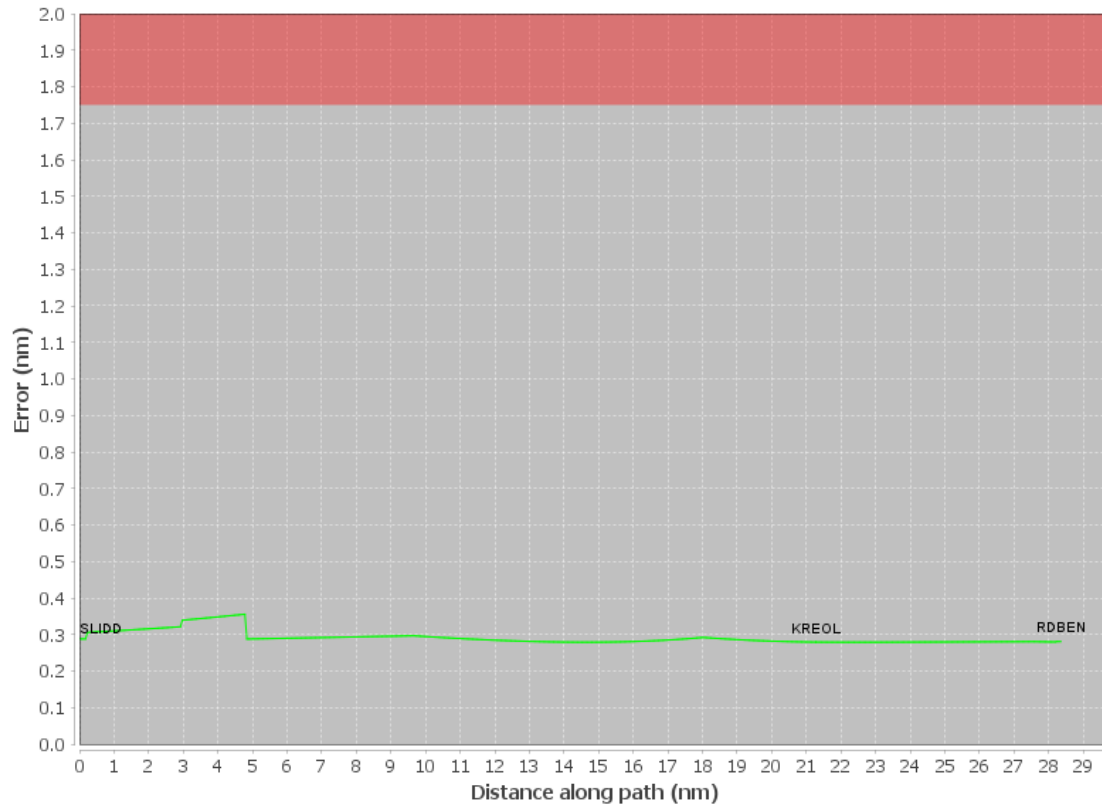
None

User DMEs

#	Name	Lat/Lon	MAGVAR	Range	Elevation [ft]	Frequency	Replaces	Status
1	LBY FAA 703988-15 LBY	N31° 25' 07.2578", W089° 20' 15.3672"	5.0 E	40	290	110.6	LBY FAA 703988-15	
	ESV:	Bearing [True]: 126.0° to 188.0° Bearing [Mag]: 121.0° to 183.0°				Arc Distance: Out to 73.0 NM Altitude: 4700.0 to 18300.0 ft		
2	GPT FAA 698103-2 GPT	N30° 24' 24.5928", W089° 04' 36.4124"	2.0 E	40	24.9	109.0	GPT FAA 698103-2	
	ESV:	Bearing [True]: 55.0° to 70.0° Bearing [Mag]: 53.0° to 68.0°				Arc Distance: Out to 42.0 NM Altitude: 4900.0 to 18100.0 ft		
3	HRV FAA 941734-19 HRV	N29° 51' 00.7010", W090° 00' 10.7430"	2.0 E	130	2.3	114.1	HRV FAA 941734-19	
	ESV:	Bearing [True]: 42.0° to 61.0° Bearing [Mag]: 40.0° to 59.0°				Arc Distance: Out to 82.0 NM Altitude: 4700.0 to 14600.0 ft		
4	MCB FAA 704246-30 MCB	N31° 18' 16.0300", W090° 15' 29.5310"	3.0 E	130	440	116.7	MCB FAA 704246-30	
	ESV:	Bearing [True]: 145.0° to 160.0° Bearing [Mag]: 142.0° to 157.0°				Arc Distance: Out to 79.0 NM Altitude: 4900.0 to 15000.0 ft		

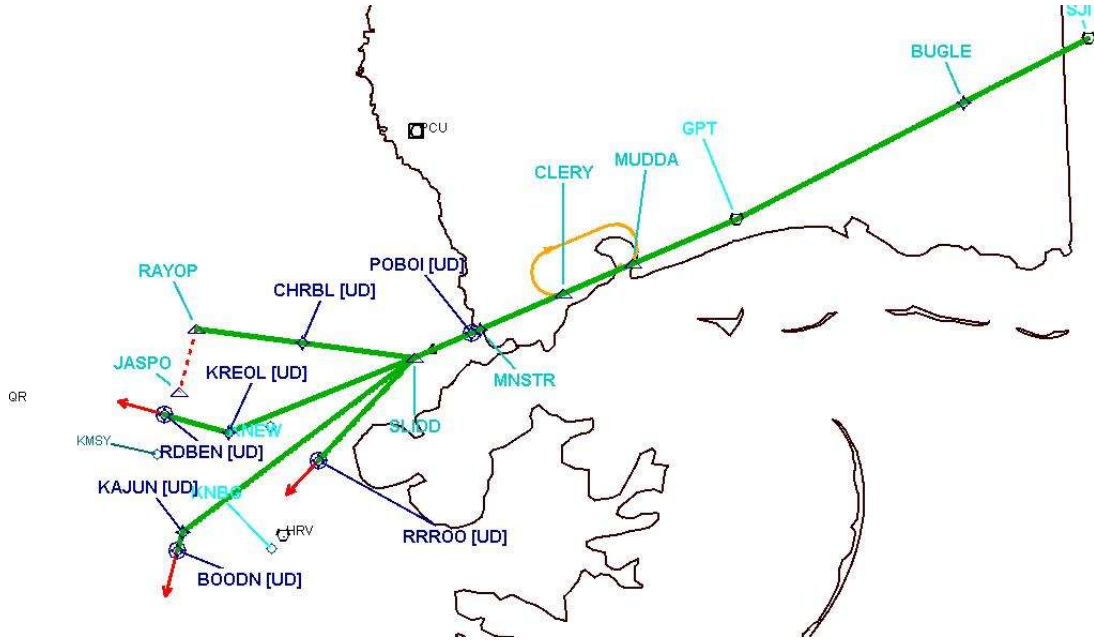
DME DME Assessment Results for MNSTR2 path SLIDD_RDBEN

DME Error



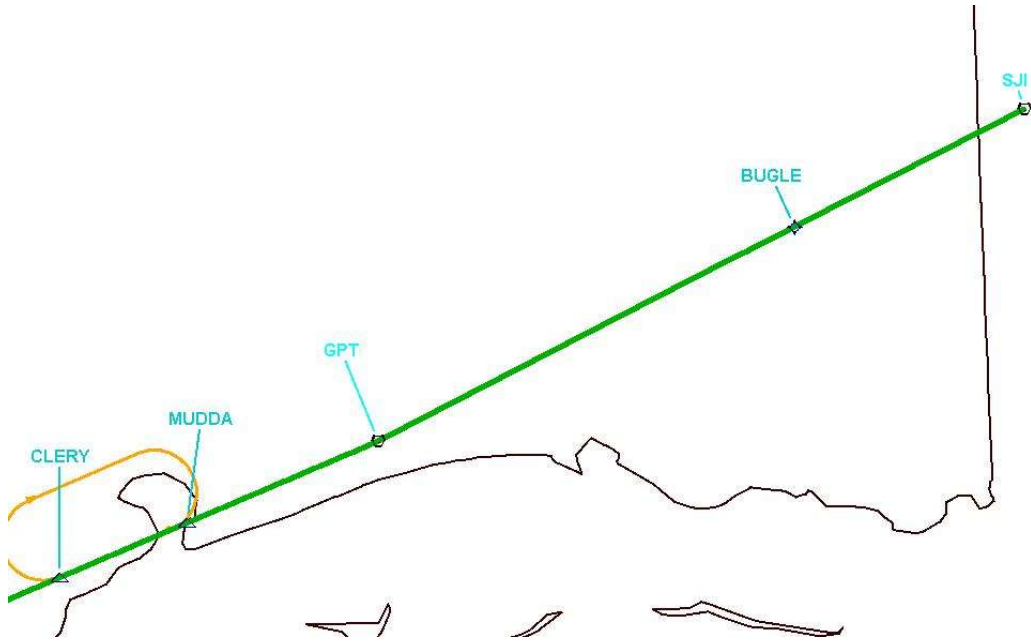
DME DME Assessment Results for MNSTR2 path SLIDD_RDBEN

Graphic Depiction 1



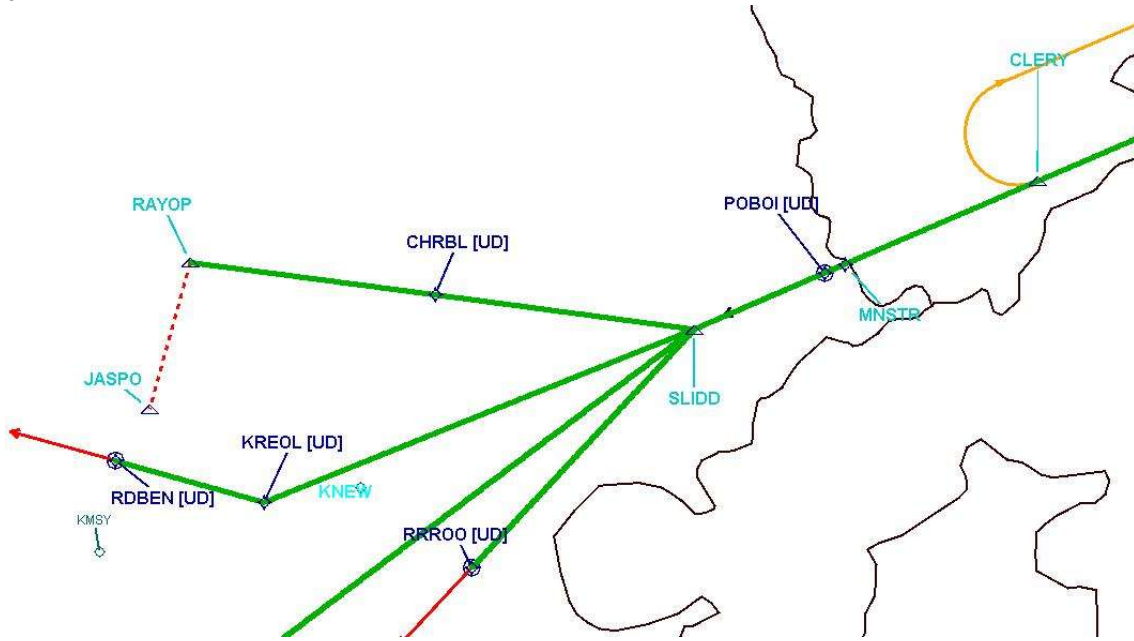
DME DME Assessment Results for MNSTR2 path SLIDD_RDBEN

Graphic Depiction 2



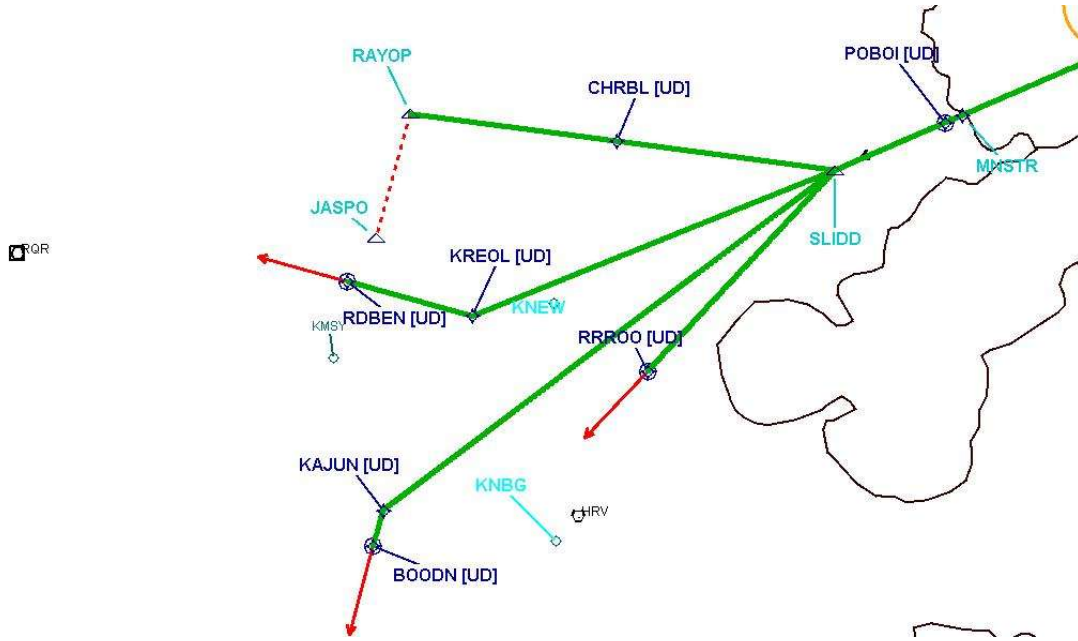
DME DME Assessment Results for MNSTR2 path SLIDD_RDBEN

Graphic Depiction 3



DME DME Assessment Results for MNSTR2 path SLIDD_RDBEN

Graphic Depiction 4



DME DME Assessment Results for MNSTR2 path SLIDD_RRROO

Results Summary	
Flyability:	Completed
DME/DME:	Completed - No Critical DMEs
Name:	Lisa A-CTR Thrysoe
Project File:	C:\Users\Lisa A-CTR Thrysoe\OneDrive - Federal Aviation Administration\Desktop\DME DME Screening\KMSY 260514\KMSY MNSTR STAR\KMSY MNSTR2 STAR 251015.tgs
Output File:	C:\Users\Lisa A-CTR Thrysoe\OneDrive - Federal Aviation Administration\Desktop\DME DME Screening\KMSY 260514\KMSY MNSTR STAR\KMSY [IFPA] MNSTR2 20251016_1621 EDT\SLIDD_RRROO\KMSY MNSTR2 RNAV STAR SLIDD RRROO 20251016_1621 EDT.pdf
Procedure Name:	MNSTR2
Software: DmeDmePlugin:	7.5.1
Date/Time:	10/16/2025 16:21 EDT
Databases:	MITRE 3DEP 3 arcsec

Failures
No Failures

Warnings
No Warnings

Informational
No Informational

Notes For Flight Check
None

Flight Plan							
Name	Type	Lat/Lon	Altitude (ft)	VNAV Mode	Ground Speed (kts)	Turn Type	Leg Type
SLIDD	WP	N30° 09' 46.0800", W089° 44' 02.1800"	5000	VNAV	210	FLY_BY	TF
RRROO	WP	N29° 58' 51.7253", W089° 55' 48.0925"	4000	VNAV	200	FLY_OVER	TF

Flyability	
Flight Type:	RNAV_STAR
Selected Airport:	KMSY [IFPA]
Climb Gradient:	None assigned
Speeds:	200 Ground Speed to 11000 FT
	240 Ground Speed to 18000 FT
	260 Ground Speed to 24000 FT
	340 Ground Speed above 24000 FT
Descent During a Turn:	Allowed
VNAV Mode:	Flight Plan

DME DME Assessment Results for MNSTR2 path SLIDD_RRROO

DME/DME	
RNP:	RNP 2
Flight Mode:	Manual
Line of Sight (DTED Level 0 Max):	Evaluated
Inertial Drift:	Enabled
Initial Drift:	0.558 NM
INS Drift Rate:	8.0 NM/Hour
Range Mode:	OSV
RNP Edges:	Evaluated
Min DME Range:	3.0 NM
DME Types:	DME, VOR-DME, VORTAC, TACAN
DME Include Angles:	30 to 150
Critical DMEs:	Allowed
DoD Facilities:	Not included
Foreign Facilities:	Not included
High DMEs:	Included
Low DMEs:	Included
Terminal DMEs:	Included
Flight Check DMEs:	Not selected
Higher Altitudes:	Not Evaluated
Near Maximum Altitude:	Not Evaluated
Automatic ESVs:	Not enabled
Disabled DMEs:	None

DME/DME (Continued)										
DMEs Used										
#	Name	Lat/Lon	MAGVAR	Range	Type	Source	Critical	Status	Time	Distance
1	RQR	N30° 05' 15.0005", W090° 35' 19.0509"	2.0 E	40	L		NO	Enabled	22.7 %	22.7 %
2	PCU	N30° 33' 40.1975", W089° 43' 49.7574"	5.0 E	40	L		NO	Enabled	100 %	100 %
3	TBD	N29° 39' 51.5600", W090° 49' 44.7350"	2.0 E	130	DH		NO	Enabled	100 %	100 %
4	GPT	N30° 24' 24.5928", W089° 04' 36.4124"	2.0 E	40	L		NO	Enabled	8.6 %	8.6 %
5	MCB	N31° 18' 16.0300", W090° 15' 29.5310"	3.0 E	130	H		NO	Enabled	1.2 %	1.2 %
6	HRV	N29° 51' 00.7010", W090° 00' 10.7430"	2.0 E	130	H		NO	Enabled	23.8 %	23.8 %

Flight Check DME Selection						
Distance [NM]	Selected DMEs					Alternate
0.0	MCB	GPT	TBD	PCU	HRV	
0.2	PCU	GPT	TBD			
1.3	PCU	TBD				
11.5	PCU	RQR	HRV	TBD		

Inertial Drift Segments			
#	Start Location	End Location	Length [NM]

Available DMEs by Waypoints			
Waypoint Before	Waypoint After	DME List	Suggested DMEs
SLIDD	RRROO	RQR, PCU, TBD, GPT, MCB, HRV	

DME DME Assessment Results for MNSTR2 path SLIDD_RRROO

User Data Files

#	File Name
---	-----------

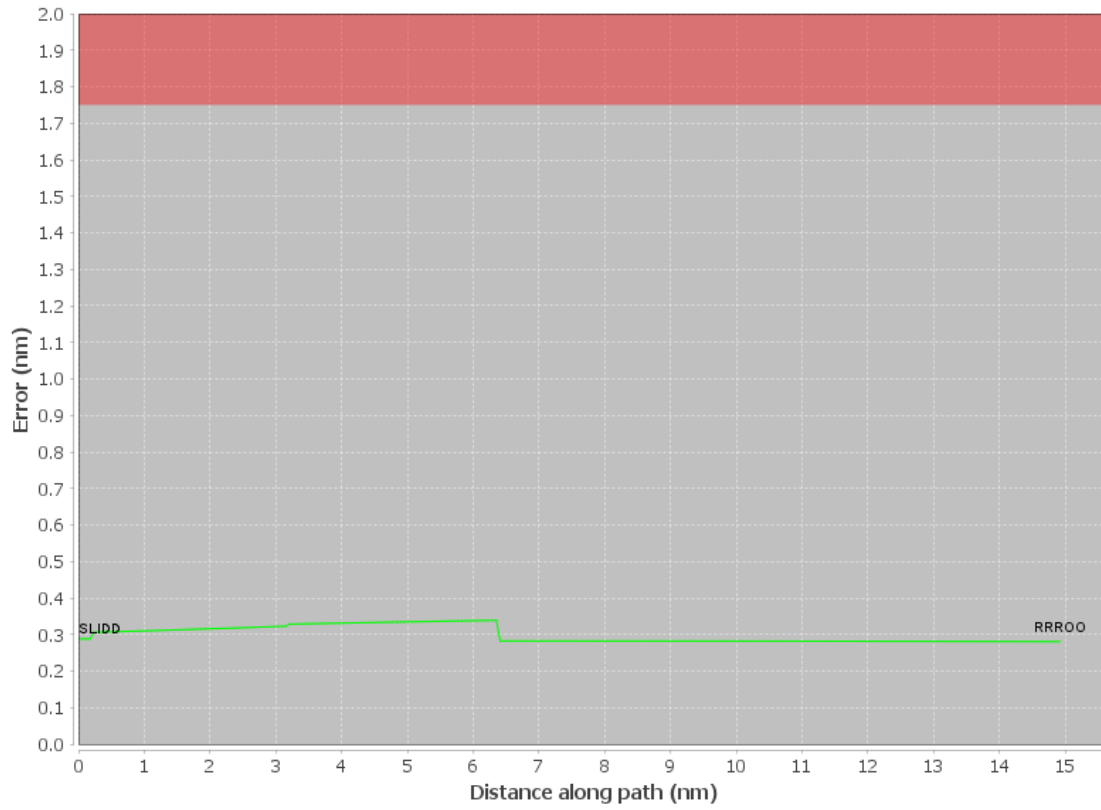
None

User DMEs

#	Name	Lat/Lon	MAGVAR	Range	Elevation [ft]	Frequency	Replaces	Status
1	LBY FAA 703988-15 LBY	N31° 25' 07.2578", W089° 20' 15.3672"	5.0 E	40	290	110.6	LBY FAA 703988-15	
	ESV:	Bearing [True]: 126.0° to 188.0° Bearing [Mag]: 121.0° to 183.0°				Arc Distance: Out to 73.0 NM Altitude: 4700.0 to 18300.0 ft		
2	GPT FAA 698103-2 GPT	N30° 24' 24.5928", W089° 04' 36.4124"	2.0 E	40	24.9	109.0	GPT FAA 698103-2	
	ESV:	Bearing [True]: 55.0° to 70.0° Bearing [Mag]: 53.0° to 68.0°				Arc Distance: Out to 42.0 NM Altitude: 4900.0 to 18100.0 ft		
3	HRV FAA 941734-19 HRV	N29° 51' 00.7010", W090° 00' 10.7430"	2.0 E	130	2.3	114.1	HRV FAA 941734-19	
	ESV:	Bearing [True]: 42.0° to 61.0° Bearing [Mag]: 40.0° to 59.0°				Arc Distance: Out to 82.0 NM Altitude: 4700.0 to 14600.0 ft		
4	MCB FAA 704246-30 MCB	N31° 18' 16.0300", W090° 15' 29.5310"	3.0 E	130	440	116.7	MCB FAA 704246-30	
	ESV:	Bearing [True]: 145.0° to 160.0° Bearing [Mag]: 142.0° to 157.0°				Arc Distance: Out to 79.0 NM Altitude: 4900.0 to 15000.0 ft		

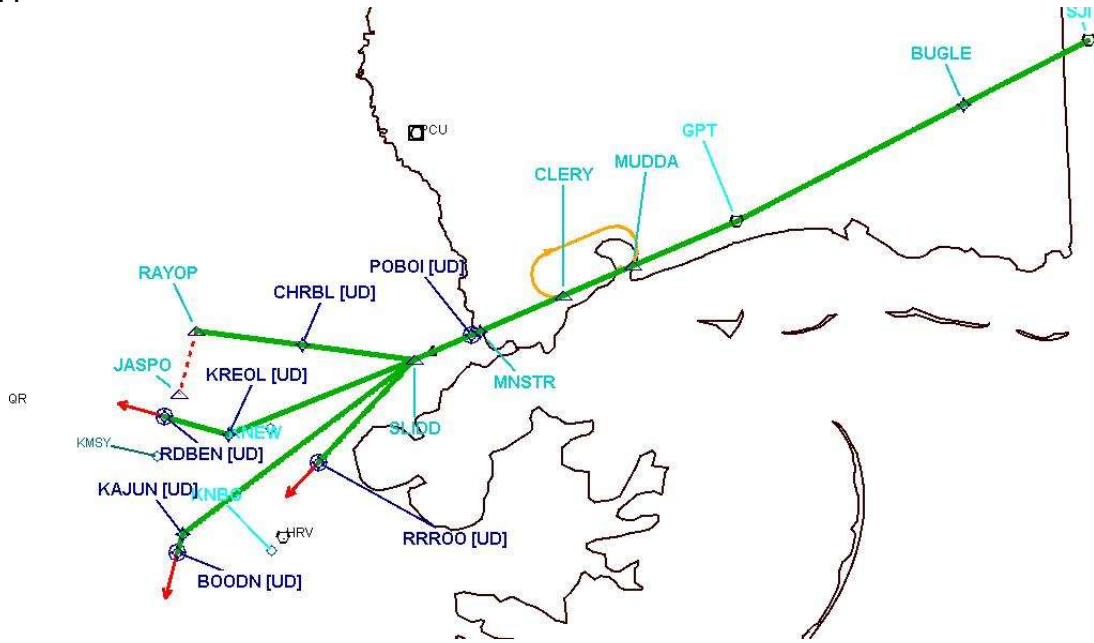
DME DME Assessment Results for MNSTR2 path SLIDD_RRROO

DME Error



DME DME Assessment Results for MNSTR2 path SLIDD_RRROO

Graphic Depiction 1



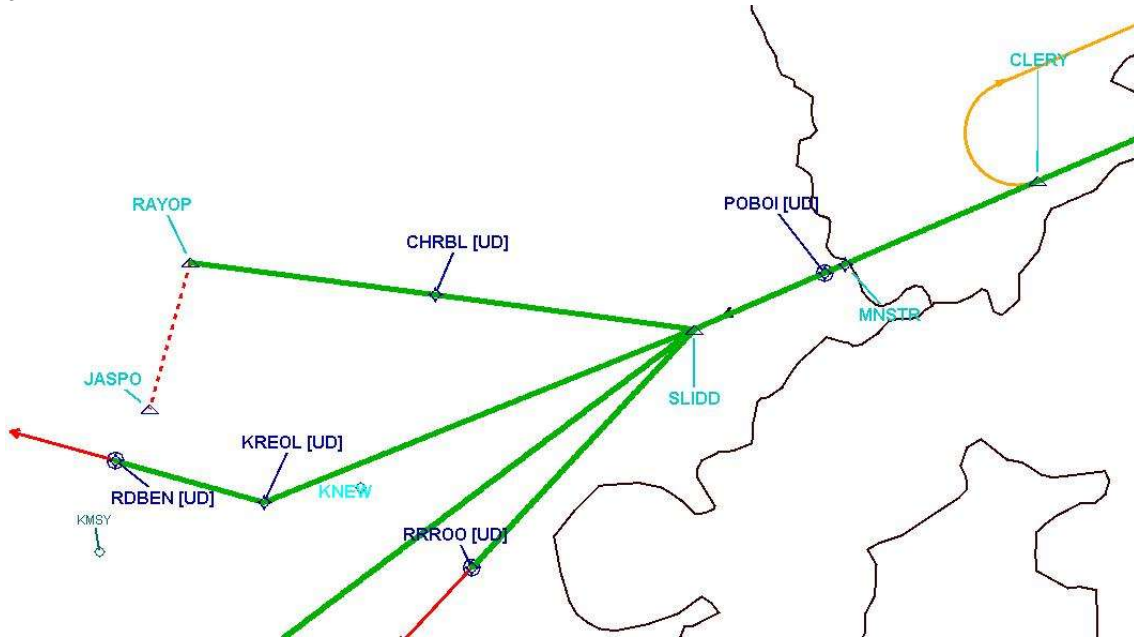
DME DME Assessment Results for MNSTR2 path SLIDD_RRROO

Graphic Depiction 2



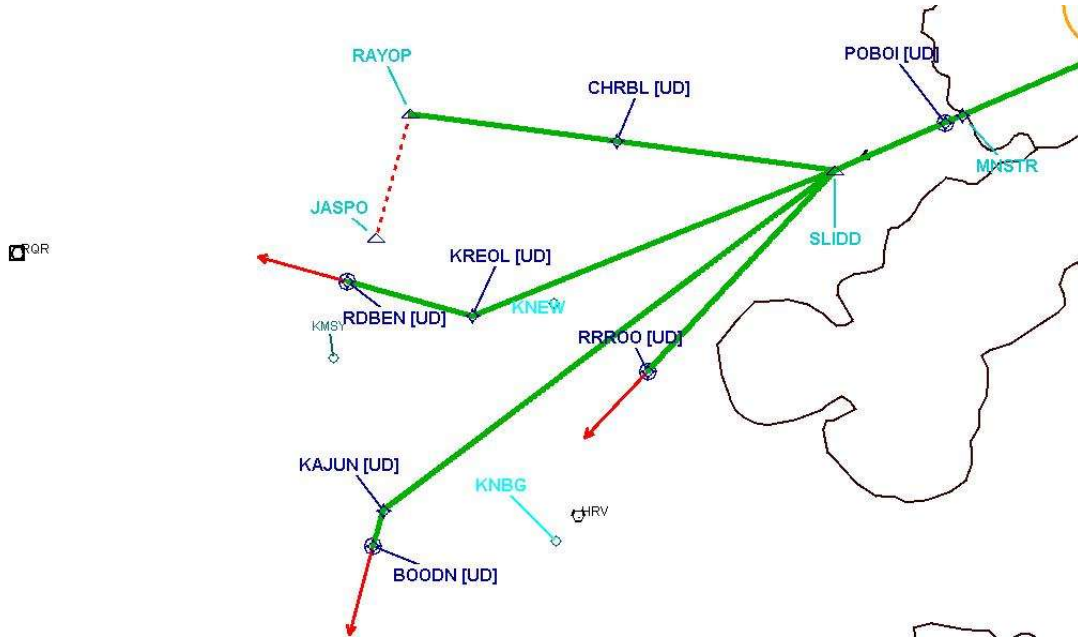
DME DME Assessment Results for MNSTR2 path SLIDD_RRROO

Graphic Depiction 3



DME DME Assessment Results for MNSTR2 path SLIDD_RRROO

Graphic Depiction 4



DME ESVs

#	Name	Lat/Lon	MAGVAR	Range	Elevation [ft]	Frequency	Replaces	Status
None								