

Flight Procedures Cover Page	Task Action: FLIGHT CHECK	Task Type: IAP	Estimated Chart Date: 02/19/2026	APWS Task ID: 626B029F061343E0B63C1B14B2DDC73E	APWS Project ID: 4565DC9097EB411BA1BD45A53C790A53
Procedure: RNAV (GPS) RWY 35 AMDT 0D		Enroute: NO	Specialist: Johnson, Timothy		Agreement Number:
Airport ID: F56			Airport City: STAMFORD		State: TX
Facility ID:	Facility Type:	Flight Inspection Remark Type: New FC Slot			

Procedure Comments:  
ACTIVE DATA USED.

CLEARs T-NOTAM 5/1655.

CONTACT: CASEY HILL (405) 954-0624.





APP CRS	Rwy Ldg	<b>3707</b>
<b>354°</b>	TDZE	<b>1560</b>
	Apt Elev	<b>1561</b>

# RNAV (GPS) RWY 35

ARLEDGE FLD (F<sup>56</sup>)

RNP APCH-GPS.

**▼** Circling NA to Rwy 8, 13, 26 and 31. Use ABI altimeter setting; when not received, use BKD altimeter setting and increase all MDAs 40 feet and Circling visibility Cat C ¼ SM. Procedure NA at night

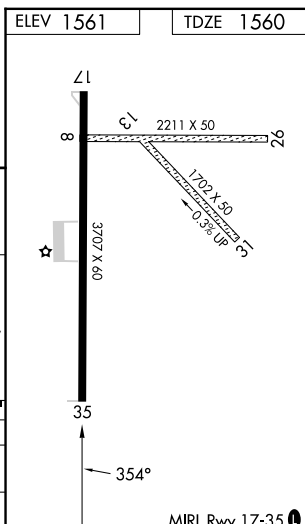
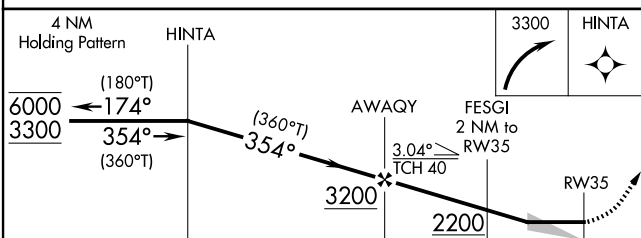
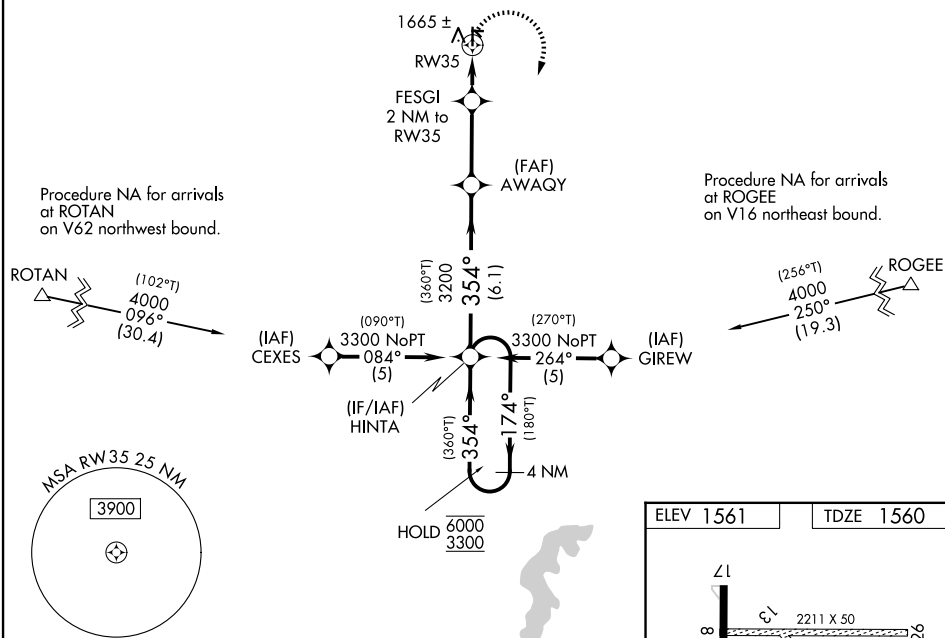
**MISSED APPROACH:** Climbing right turn to 3300 direct HINTA and hold.

ABI ASOS  
**118.25**

ABILENE APP CON  
**127.2 282.3**

UNICOM  
**122.8 (CTAF) 0**

## PROTOTYPE- NOT FOR NAVIGATION



CATEGORY	A	B	C	D
LNVA MDA	2020-1	460 (500-1)	2020-1 <sup>3</sup> / <sub>8</sub> 460 (500-1 <sup>3</sup> / <sub>8</sub> )	NA
CIRCLING	2100-1 539 (600-1)	2200-1 639 (700-1)	2220-1 <sup>3</sup> / <sub>4</sub> 659 (700-1 <sup>3</sup> / <sub>4</sub> )	NA

# RNAV (GPS) RWY 35

APP CRS	Rwy Idg	<b>3707</b>
<b>354°</b>	TDZE	<b>1560</b>
	Apt Elev	<b>1561</b>

# RNAV (GPS) RWY 35

ARLEDGE FLD (F56)

RNP APCH-GPS.

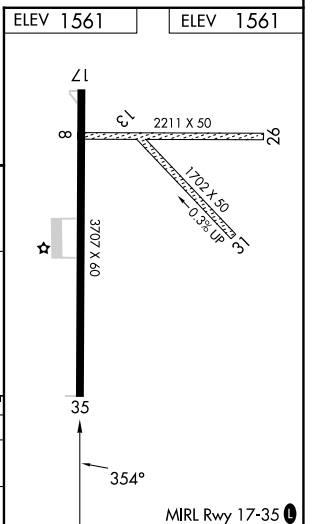
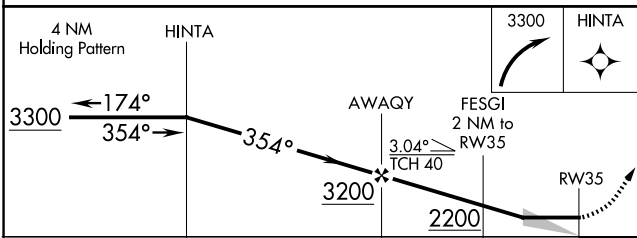
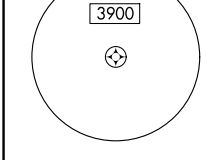
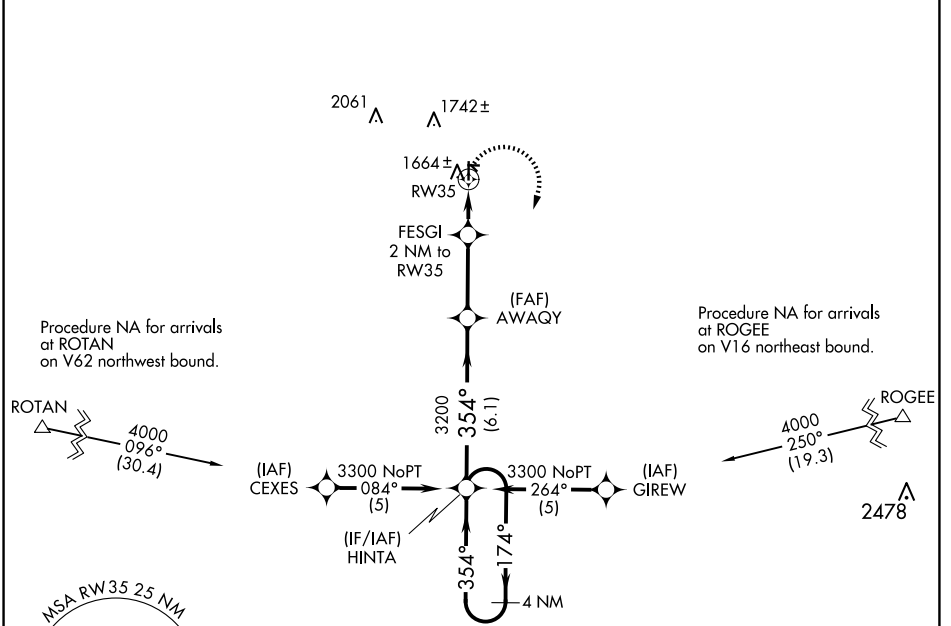
**▽** Use Abilene Rgnl altimeter setting; when not received use Breckenridge altimeter setting and increase all MDAs 40 feet and visibility Cat C ¼ SM. Procedure NA at night. Circling NA to Rwy 8/26 and 13/31.

**△** NA

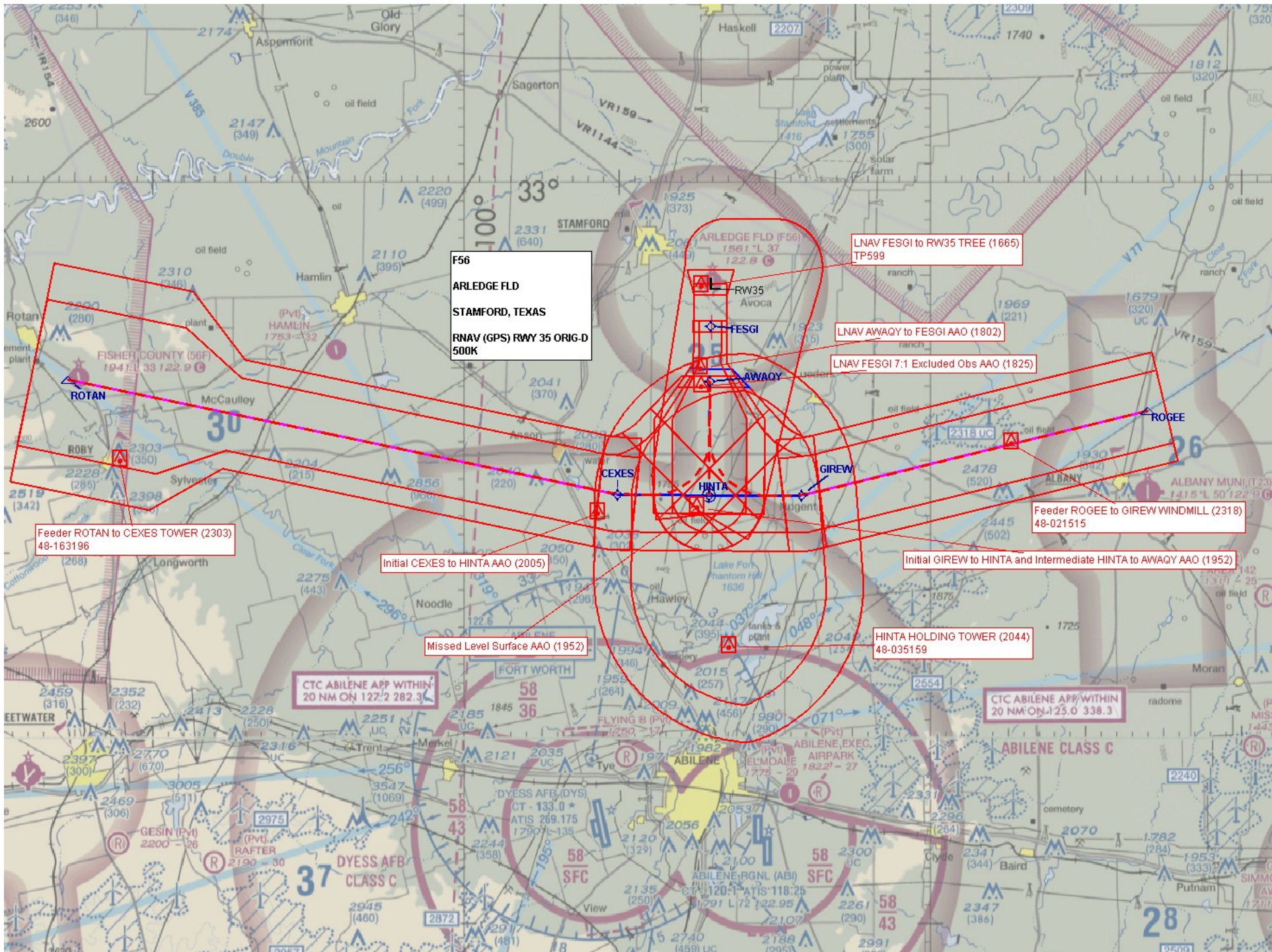
MISSED APPROACH: Climbing right turn to 3300 direct HINTA and hold.

ABILENE APP CON  
**127.2 282.3**

UNICOM  
**122.8 (CTAF) 0**



CATEGORY	A	B	C	D
RNAV MDA	2020-1	460 (500-1)	2020-1¼ 460 (500-1¼)	NA
CIRCLING	2100-1 539 (600-1)	2200-1½ 639 (700-1½)	2220-1¾ 659 (700-1¾)	NA



F56  
ARLEDGE FLD  
STAMFORD, TEXAS  
RNAV (GPS) RWY 35 ORIG-D  
500K

LNAV FESGI to RW35 TREE (1665)  
TP599

LNAV AWAGY to FESGI AAO (1802)

LNAV FESGI 7:1 Excluded Obs AAO (1825)

Feeder ROGEE to GIREW WINDMILL (2318)  
48-021515

Initial GIREW to HINTA and Intermediate HINTA to AWAGY AAO (1952)

HINTA HOLDING TOWER (2044)  
48-035159

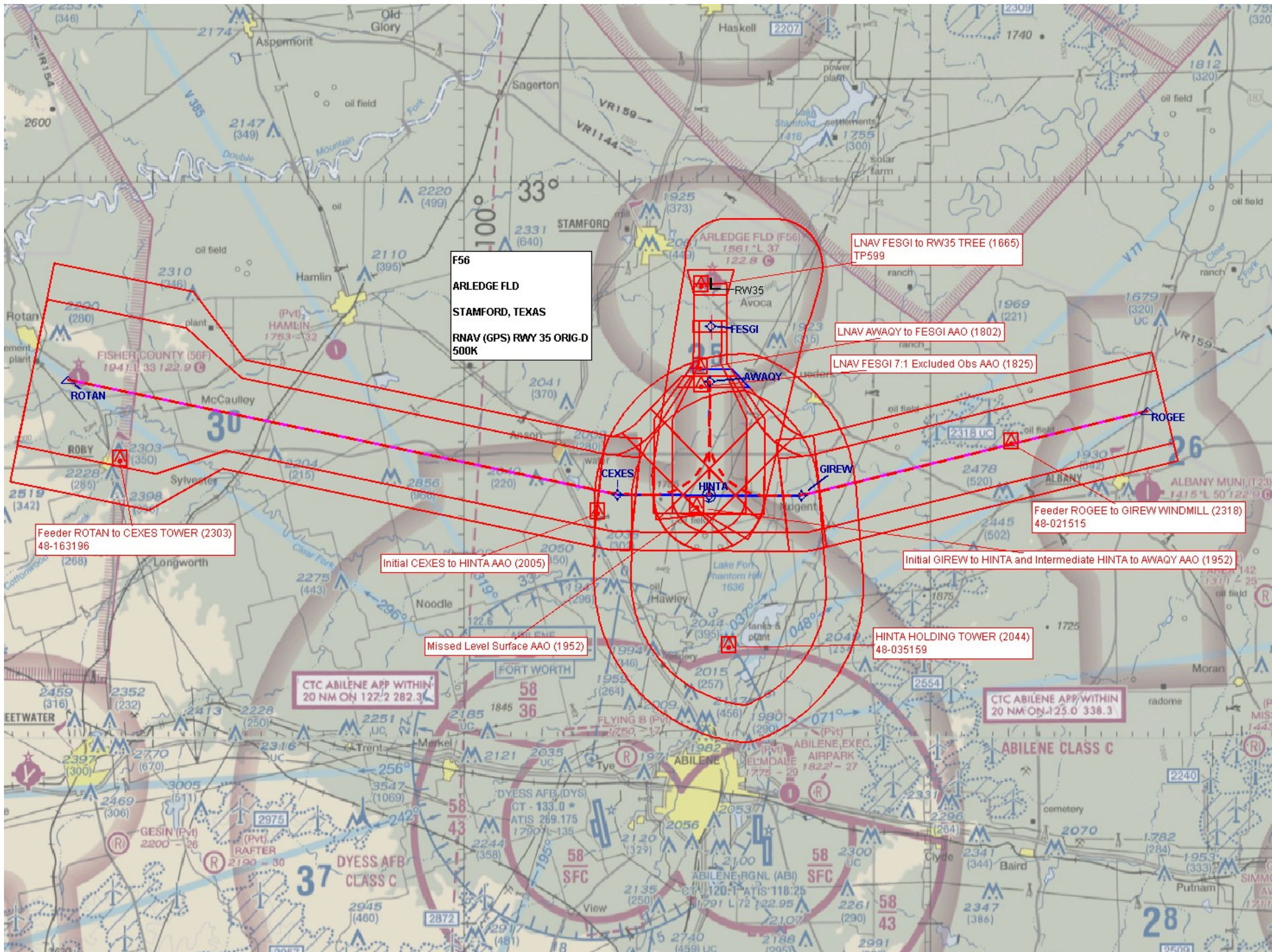
Initial CEXES to HINTA AAO (2005)

Missed Level Surface AAO (1952)

CTC ABILENE APP WITHIN  
20 NM ON 127.2 282.3

CTC ABILENE APP WITHIN  
20 NM ON 125.0 338.3

Feeder ROTAN to CEXES TOWER (2303)  
48-163196

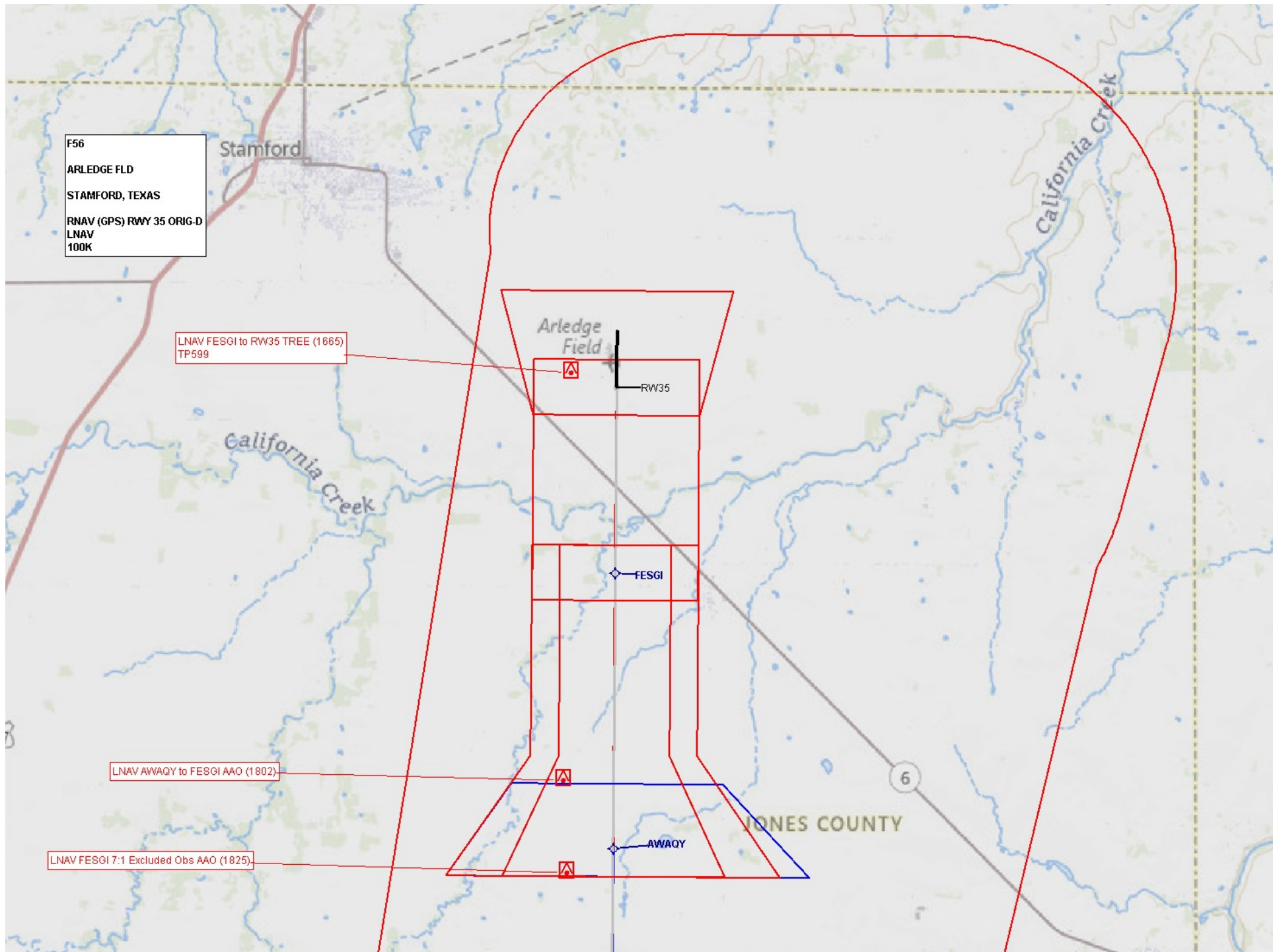


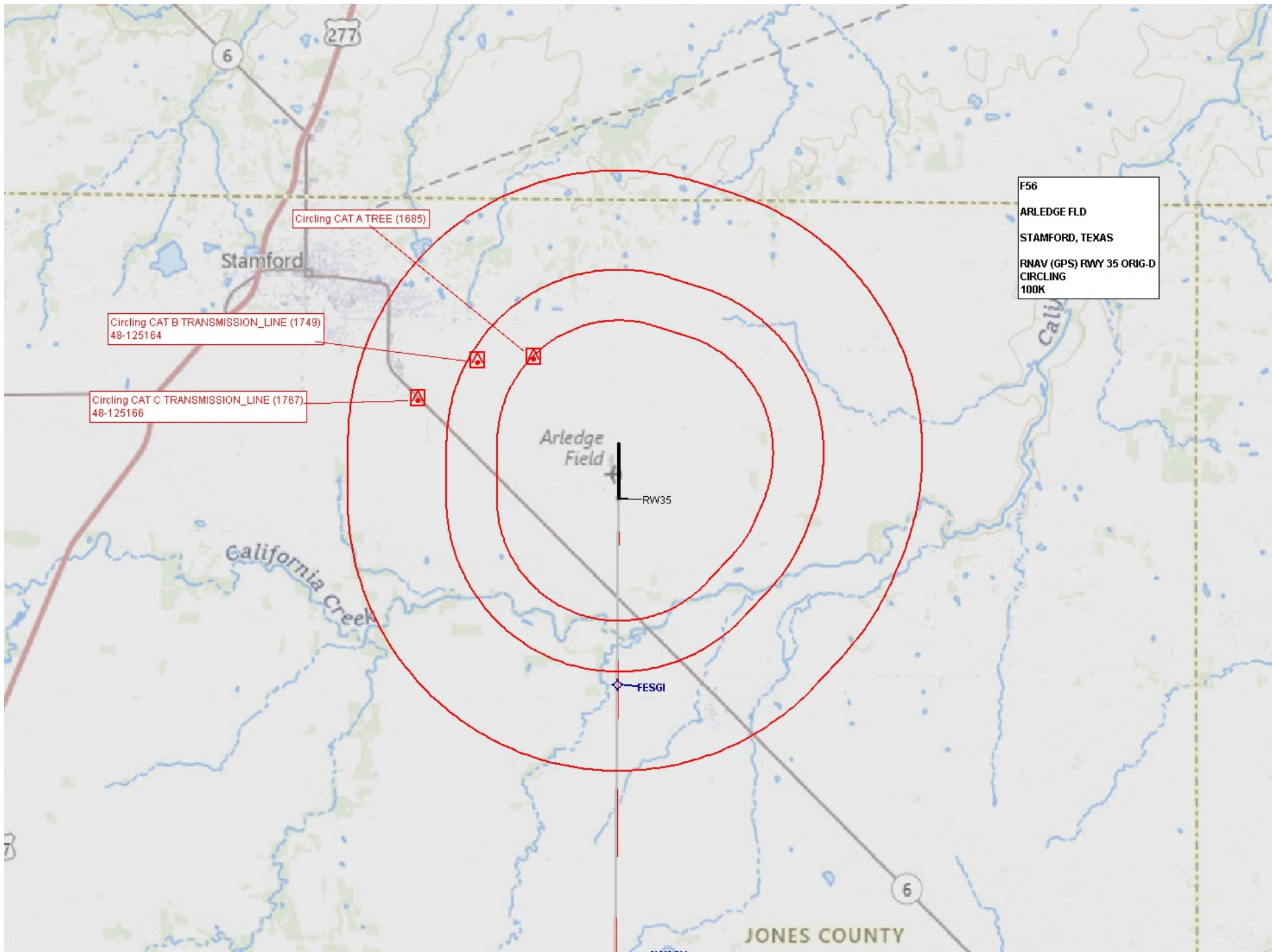
F56  
ARLEDGE FLD  
STAMFORD, TEXAS  
RNAV (GPS) RWY 35 ORIG-D  
LNAV  
100K

LNAV FESGI to RW35 TREE (1665)  
TP599

LNAV AWAQY to FESGI AAO (1802)

LNAV FESGI 7:1 Excluded Obs AAO (1825)





F56  
ARLEDGE FLD  
STAMFORD, TEXAS  
RNAV (GPS) RWY 35 ORIG-D  
CIRCLING  
100K

Circling CAT A TREE (1685)

Circling CAT B TRANSMISSION\_LINE (1749)  
48-125164

Circling CAT C TRANSMISSION\_LINE (1767)  
48-125166

Arledge  
Field

RW35

FESGI

California  
Creek

Cal  
Creek

JONES COUNTY

6

277

6