

Flight Procedures Cover Page	Task Action: Abbreviated Amendment	Task Type: IAP	Estimated Chart Date: 05/14/2026	APWS Task ID: 62B086A47CD04DE8980B296BD6BF728D	APWS Project ID: 30209D8E4F0D4463A5A9F7CEEFF64D
Procedure: RNAV (GPS) RWY 24 AMDT 0C		Enroute: NO	Specialist: Armentrout, Britney		Agreement Number:
Airport ID: KWJF			Airport City: LANCASTER		State: CA
Facility ID:	Facility Type:	Flight Inspection Remark Type:			

Procedure Comments:

ACTIVE AIRNAV DATA USED.

CANCELS FDC NOTAM 5/1973.

PROCESSED IAW TECHNICAL SUPPORT GROUP (AJF-17) MEMO DATED 07/07/2021, SUBJECT: GUIDANCE FOR PROCEDURAL CHANGES REQUIRING FLIGHT INSPECTION/VALIDATION.

CONTACT RAKE MCGRAW AJV-A422 405-954-8711.



CURRENT

APP CRS	Rwy Ldg	7201
252°	TDZE	2341
	Apt Elev	2351

RNAV (GPS) RWY 24

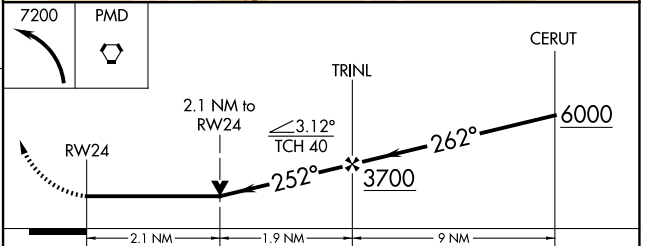
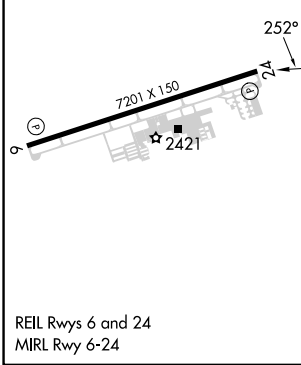
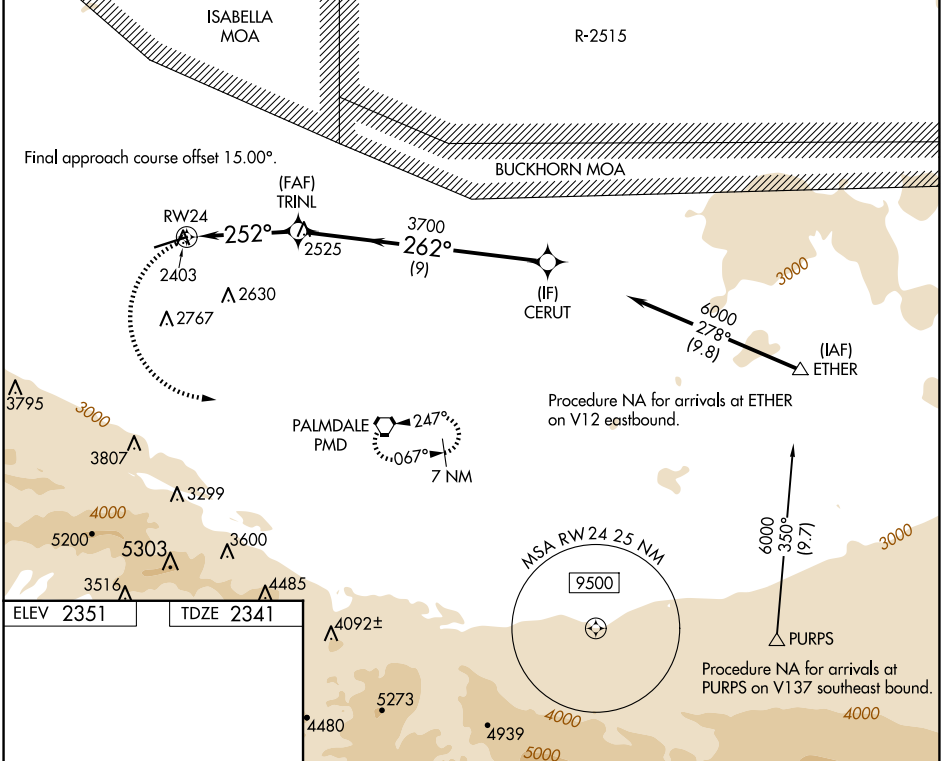
GENERAL WM J FOX AIRFIELD (WJF)

RNP APCH - GPS.

▼ Rwy 24 helicopter visibility reduction below 3/4 NA. VDP NA when using
 ▲ Palmdale altimeter setting. When local altimeter setting not received, use
 Palmdale altimeter setting and increase all MDAs 60 feet and LNAV
 visibility Cat C/D 1/8 SM, and Circling visibility Cat C/D 1/4 SM.

MISSED APPROACH: (Do not exceed 210K until
 PMD VORTAC) Climbing left turn to 7200 direct
 PMD VORTAC and hold, continue climb-in-hold
 7200.

ATIS 126.3	JOSHUA APP CON 126.1 290.3	FOX TOWER* 118.525 (CTAF) 256.9	GND CON 121.7 256.9	UNICOM 122.95
----------------------	--------------------------------------	---	-------------------------------	-------------------------



CATEGORY	A	B	C	D
LNAV MDA	3060-1	719 (800-1)	3060-2	719 (800-2)
CIRCLING	3060-1	709 (800-1)	3120-2 1/4 769 (800-2 1/4)	3120-2 1/2 769 (800-2 1/2)

SW-3, 02 OCT 2025 to 30 OCT 2025

SW-3, 02 OCT 2025 to 30 OCT 2025