

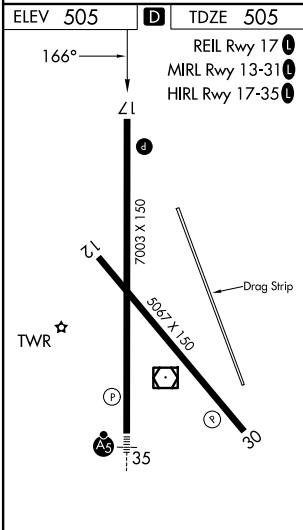
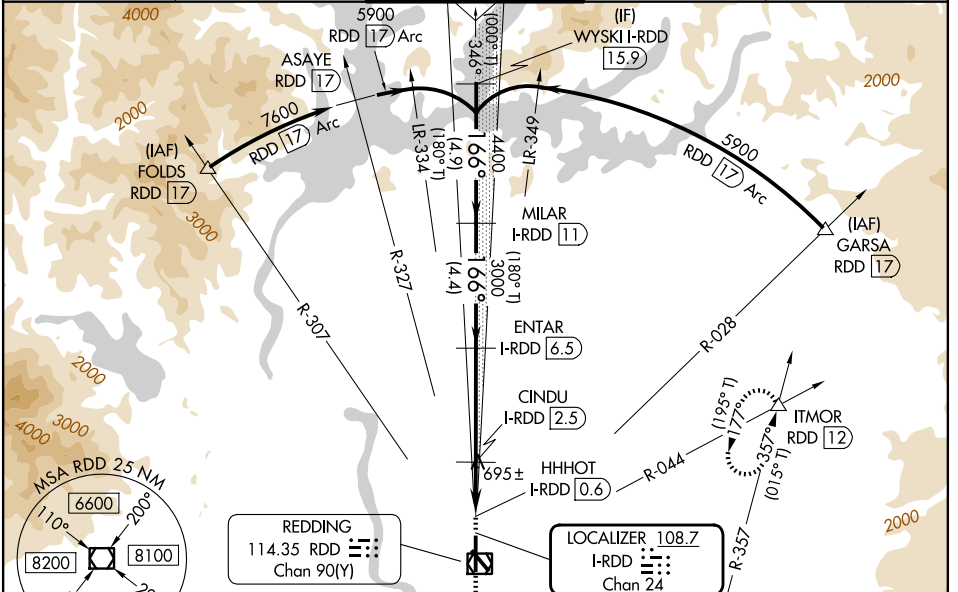
LOC/DME I-RDD <b>108.7</b> Chan 24	APP CRS <b>166°</b>	Rwy Ldg TDZE <b>7003</b> <b>505</b> Apt Elev <b>505</b>
--	------------------------	--

# LOC BC RWY 17

REDDING RGNL (R.DD)

DME required.	MISSED APPROACH: Climb to 2000 then climbing left turn to 5000 on heading 015° and RDD VOR/DME R-044 to ITMOR INT/RDD 12 DME and hold, continue climb-in-hold to 5000.		
<b>▼</b> Rwy 17 helicopter visibility reduction below 3/4 SM NA.	<b>▲</b> Circling Rwy 13, NA at night.		

ATIS <b>124.1</b>	OAKLAND CENTER <b>132.2 350.3</b>	REDDING TOWER ★ <b>119.8</b> (CTAF) <b>0 269.25</b>	GND CON <b>121.7</b>	UNICOM <b>122.95</b>
----------------------	--------------------------------------	--	-------------------------	-------------------------



## PROTOTYPE-NOT FOR NAVIGATION

### BACK COURSE

