

Flight Procedures Cover Page	Task Action: Cancellation	Task Type: IAP	Estimated Chart Date: 06/15/2023	APWS Task ID: 63251BB9AE154FE5B0C0005754E33E2B	APWS Project ID: 2E977A60162C43909832A7402E6C3274
Procedure: ILS OR LOC RWY 23 AMDT 3E		Enroute: NO	Specialist: Teffeteller, David		Agreement Number:
Airport ID: KCLT			Airport City: CHARLOTTE		State: NC
Facility ID:	Facility Type:	Flight Inspection Remark Type:			

Procedure Comments:
RWY 05/23 PERM CLOSED

CONTACT DAVE TEFFETELLER/240-457-1998



LOC/DME I-APU 109.5 Chan 32	APP CRS 235°	Rwy Idg TDZE Apt Elev	7502 747 748
---	------------------------	-----------------------------	---

ILS or LOC RWY 23
CHARLOTTE/DOUGLAS INTL (CLT)

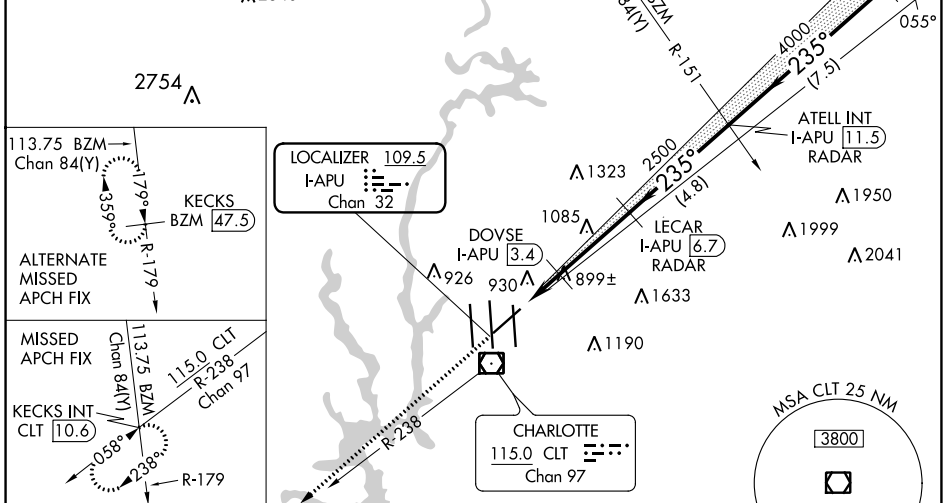
DME or RADAR required.

MISSED APPROACH: Climb to 4000 via heading 235° and CLT R-238 to KECKS INT/CLT 10.6 DME and hold, continue climb-in-hold to 4000.

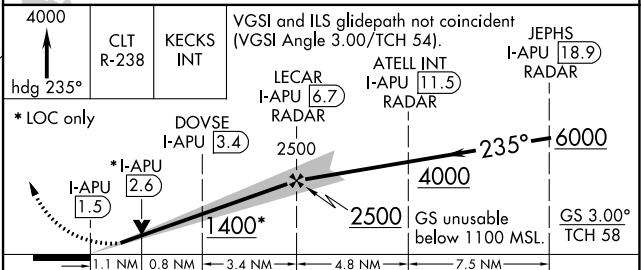
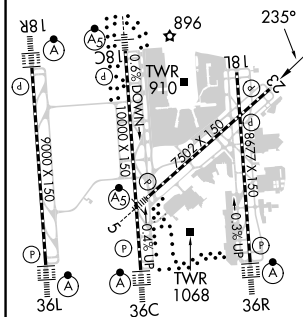
D-ATIS ARR 121.15 DEP 132.1	CHARLOTTE APP CON (001°-119°) 128.32 (120°-295°) 120.05 (296°-360°) 134.75 (180°-359°) 257.2 (360°-179°) 307.8	CHARLOTTE TOWER (Rwys 18L-36R, 5-23) 118.1 257.8 (Rwy 18C-36C) 126.4 257.8 (Rwy 18R-36L) 133.35 257.8	GND CON 121.8 348.6 (WEST) 121.9 348.6 (EAST)	CLNC DEL 127.15 348.6
---	--	---	---	---

RADAR REQUIRED

A 2340



ELEV 748	D	TDZE 747
----------	----------	----------



HIRL all Rwys
REIL Rwys 18L and 23
TDZ/CL Rwys 18R, 36L, 36C and 36R

FAF to MAP 5.3 NM

Knots	60	90	120	150	180
Min:Sec	5:18	3:32	2:39	2:07	1:46

CATEGORY	A	B	C	D
S-ILS 23	1100-1¼ 353 (400-1¼)			
S-LOC 23	1400/50	653 (700-1)	1400-1¾ 653 (700-1¾)	1400-2 653 (700-2)
DOVSE FIX MINIMUMS				
S-LOC 23	1160/50	413 (500-1)	1160/60	413 (500-1¼)

SE-2, 01 DEC 2022 TO 29 DEC 2022

SE-2, 01 DEC 2022 TO 29 DEC 2022