

Flight Procedures Cover Page	Task Action: FLIGHT CHECK	Task Type: IAP	Estimated Chart Date: 05/14/2026	APWS Task ID: 64F06E35C3C84324AB7845CFD148613D	APWS Project ID: 04F43BEC1A27474A890038D7724363BA
Procedure: RNAV (GPS) RWY 36 AMDT 0C		Enroute: NO	Specialist: Wilkinson, Christopher		Agreement Number:
Airport ID: KRCP			Airport City: STOCKTON		State: KS
Facility ID:	Facility Type:	Flight Inspection Remark Type: New FC Slot			

Procedure Comments:
 UTILIZED ACTIVE DATA FOR KRCP AND RWYS.

 UPDATED PRIMARY ALTIMETER.

 CRC REMAINDER CHANGED FROM FROM 0BE5878B TO 0D940986.

 CONTACT CASIMIR TABAKA, AJV-A430, 405-202-7857.



WAAS CH 40232 W36A	APP CRS 356°	Rwy Ldg TDZE 5000 1999	Apt Elev 1999
--	------------------------	--	-------------------------

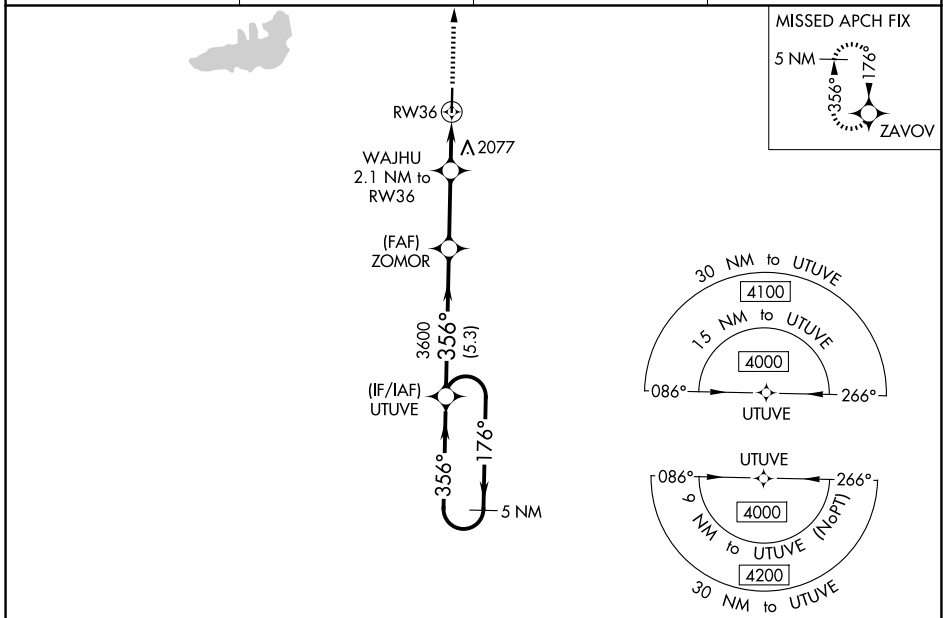
OLD

RNAV (GPS) RWY 36
ROOKS COUNTY RGNL (RCP)

NA Baro-VNAV NA. Use Hill City altimeter setting; when not received, use Hays Rgnl altimeter setting. Circling NA west of Rwy 18-36. DME/DME RNP-0.3 NA.

MISSED APPROACH: Climb to 6000 direct ZAVOV and hold, continue climb-in-hold to 6000.

AWOS-3PT 120.075	HLC ASOS 118.425	DENVER CENTER 132.7 226.675	CTAF 122.9
----------------------------	----------------------------	---------------------------------------	----------------------

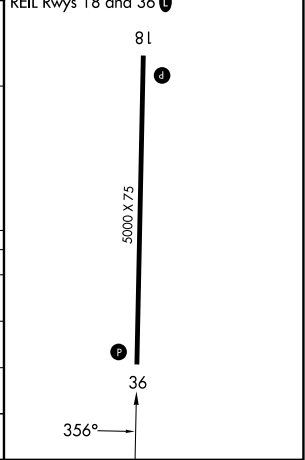
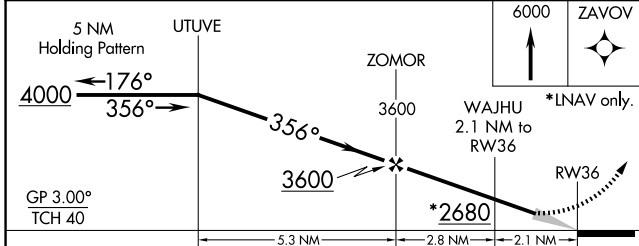


NC-2, 02 OCT 2025 to 30 OCT 2025

NC-2, 02 OCT 2025 to 30 OCT 2025

ELEV 1999	D TDZE 1999
-----------	--------------------

MIRL Rwy 18-36 **L**
REIL Rwys 18 and 36 **L**



CATEGORY	A	B	C	D
LPV DA	2290-1 291 (300-1)			NA
LNAV/VNAV DA	2340-1½ 341 (400-1½)			NA
LNAV MDA	2420-1 421 (500-1)		2420-1¼ 421 (500-1¼)	NA
CIRCLING	2460-1 461 (500-1)	2480-1 481 (500-1)	2500-1½ 501 (600-1½)	NA