

DME ESVs								
#	Name	Lat/Lon	MAGVAR	Range	Elevation [ft]	Frequency	Replaces	Status
1	LAL FAA 704224-67 LAL [IFPA]	N27° 59' 10.31", W082° 00' 50.06"	1.0 E	130	133.8	116.0	LAL FAA 704224-67	
	ESV:	Bearing [True]: 41.0° to 121.0° Bearing [Mag]: 40.0° to 120.0°				Arc Distance: Out to 102.0 NM Altitude: 6000.0 to 18000.0 ft		
2	LBV FAA 755486-41 LBV [IFPA]	N26° 49' 41.47", W081° 23' 29.18"	1.0 E	40	30	110.4	LBV FAA 755486-41	
	ESV:	Bearing [True]: 51.0° to 101.0° Bearing [Mag]: 50.0° to 100.0°				Arc Distance: Out to 106.0 NM Altitude: 8000.0 to 18000.0 ft		
3	ORL FAA 694096-71 ORL [IFPA]	N28° 32' 33.80", W081° 20' 06.05"	0.0 E	130	101.6	112.2	ORL FAA 694096-71	
	ESV:	Bearing [True]: 145.0° to 165.0° Bearing [Mag]: 145.0° to 165.0°				Arc Distance: Out to 72.0 NM Altitude: 3900.0 to 10000.0 ft		
4	PBI FAA 882483-58 PBI [IFPA]	N26° 40' 48.20", W080° 05' 11.36"	3.0 W	130	15.7	115.7	PBI FAA 882483-58	
	ESV:	Bearing [True]: 17.0° to 137.0° Bearing [Mag]: 20.0° to 140.0°				Arc Distance: Out to 78.0 NM Altitude: 5000.0 to 14600.0 ft		

DME ESVs								
#	Name	Lat/Lon	MAGVAR	Range	Elevation [ft]	Frequency	Replaces	Status
1	LAL FAA 704224-67 LAL [IFPA]	N27° 59' 10.31", W082° 00' 50.06"	1.0 E	130	133.8	116.0	LAL FAA 704224-67	
	ESV:	Bearing [True]: 41.0° to 121.0° Bearing [Mag]: 40.0° to 120.0°				Arc Distance: Out to 102.0 NM Altitude: 6000.0 to 18000.0 ft		
2	LBV FAA 755486-41 LBV [IFPA]	N26° 49' 41.47", W081° 23' 29.18"	1.0 E	40	30	110.4	LBV FAA 755486-41	
	ESV:	Bearing [True]: 51.0° to 101.0° Bearing [Mag]: 50.0° to 100.0°				Arc Distance: Out to 106.0 NM Altitude: 8000.0 to 18000.0 ft		
3	ORL FAA 694096-71 ORL [IFPA]	N28° 32' 33.80", W081° 20' 06.05"	0.0 E	130	101.6	112.2	ORL FAA 694096-71	
	ESV:	Bearing [True]: 145.0° to 165.0° Bearing [Mag]: 145.0° to 165.0°				Arc Distance: Out to 72.0 NM Altitude: 3900.0 to 10000.0 ft		
4	PBI FAA 882483-58 PBI [IFPA]	N26° 40' 48.20", W080° 05' 11.36"	3.0 W	130	15.7	115.7	PBI FAA 882483-58	
	ESV:	Bearing [True]: 17.0° to 137.0° Bearing [Mag]: 20.0° to 140.0°				Arc Distance: Out to 78.0 NM Altitude: 5000.0 to 14600.0 ft		
5	TRV FAA 704266-73 TRV [IFPA]	N27° 40' 42.26", W080° 29' 23.04"	7.0 W	130	18.9	117.3	TRV FAA 704266-73	
	ESV:	Bearing [True]: 63.0° to 148.0° Bearing [Mag]: 70.0° to 155.0°				Arc Distance: Out to 91.0 NM Altitude: 6000.0 to 15000.0 ft		

## DME DME Assessment Results for SLOAO1 path CCLUB\_DORMS

Results Summary	
Flyability:	Completed
DME/DME:	Completed - No Critical DMEs
Name:	Mark CTR Thompson
Project File:	C:\Users\Mark CTR Thompson\OneDrive - Federal Aviation Administration\Desktop\RNAV Projects\RNAV Projects 2024\MCO SIDS.STARS\KMCO SLOAO1 (RNAV) STAR\DME\KMCO SLOAO1 (RNAV) STAR DME 15 MAY 2024.tgs
Output File:	C:\Users\Mark CTR Thompson\OneDrive - Federal Aviation Administration\Desktop\RNAV Projects\RNAV Projects 2024\MCO SIDS.STARS\KMCO SLOAO1 (RNAV) STAR\DME\KMCO [IFPA] SLOAO1 20240515_0712 EDT\CCLUB_DORMS\KMCO SLOAO1 RNAV STAR CCLUB DORMS 20240515_0712 EDT.pdf
Procedure Name:	SLOAO1
Software: DmeDmePlugin:	7.3.0
Date/Time:	05/15/2024 07:12 EDT
Databases:	MITRE 3DEP 3 arcsec

Failures
No Failures

Warnings
No Warnings

Informational
No Informational

Notes For Flight Check
None

Flight Plan							
Name	Type	Lat/Lon	Altitude (ft)	VNAV Mode	Ground Speed (kts)	Turn Type	Leg Type
CCLUB	WP	N27° 12' 58.23", W079° 31' 16.72"	8000	VNAV	200	FLY_BY	TF
MATLK	WP	N27° 49' 36.54", W080° 57' 04.27"	8000	VNAV	200	FLY_BY	TF
SLOAO	WP	N27° 56' 52.37", W081° 06' 53.68"	6000	VNAV	200	FLY_BY	TF
DORMS	WP	N28° 05' 47.16", W081° 05' 18.16"	6000	VNAV	200	FLY_OVER	TF

Flyability	
Flight Type:	RNAV_STAR
Selected Airport:	KMCO [IFPA]
Climb Gradient:	None assigned
Speeds:	200 Ground Speed to 11000 FT
	240 Ground Speed to 18000 FT
	260 Ground Speed to 24000 FT
	340 Ground Speed above 24000 FT
Descent During a Turn:	Allowed
VNAV Mode:	Flight Plan

**DME DME Assessment Results for SLOAO1 path CCLUB\_DORMS**

<b>DME/DME</b>	
RNP:	RNP 2
Flight Mode:	Manual
Line of Sight (DTED Level 0 Max):	Evaluated
Inertial Drift:	Enabled
Initial Drift:	0.558 NM
INS Drift Rate:	8.0 NM/Hour
Range Mode:	OSV
RNP Edges:	Evaluated
Min DME Range:	3.0 NM
DME Types:	DME, VOR-DME, VORTAC, TACAN
DME Include Angles:	30 to 150
Critical DMEs:	Not Allowed
DoD Facilities:	Not included
Foreign Facilities:	Included
High DMEs:	Included
Low DMEs:	Included
Terminal DMEs:	Included
Flight Check DMEs:	Not selected
Higher Altitudes:	Not Evaluated
Near Maximum Altitude:	Not Evaluated
Automatic ESVs:	Enabled
Disabled DMEs:	None

<b>DME/DME (Continued)</b>										
<b>DMEs Used</b>										
#	Name	Lat/Lon	MAGVAR	Range	Type	Source	Critical	Status	Time	Distance
1	LAL	N27° 59' 10.31", W082° 00' 50.06"	1.0 E	130	H	IFPA	NO	Enabled		
2	SRQ	N27° 24' 25.26", W082° 33' 49.18"	5.0 W	130	DH	IFPA	NO	Enabled		
3	TRV	N27° 40' 42.26", W080° 29' 23.04"	7.0 W	130	H	IFPA	NO	Enabled		
4	VKZ	N25° 45' 06.85", W080° 09' 16.00"	4.0 W	130	DH	IFPA	NO	Enabled		
5	LBV	N26° 49' 41.47", W081° 23' 29.18"	1.0 E	40	L	IFPA	NO	Enabled		
6	MLB	N28° 06' 19.12", W080° 38' 06.46"	7.0 W	130	DH	IFPA	NO	Enabled		
7	PBI	N26° 40' 48.20", W080° 05' 11.36"	3.0 W	130	H	IFPA	NO	Enabled		
8	ORL	N28° 32' 33.80", W081° 20' 06.05"	0.0 E	130	H	IFPA	NO	Enabled		

**DME DME Assessment Results for SLOAO1 path CCLUB\_DORMS**

<b>Flight Check DME Selection</b>						
<b>Distance [NM]</b>	<b>Selected DMEs</b>					<b>Alternate</b>
0.0	TRV [IFPA]	PBI [IFPA]	MLB [IFPA]	VKZ [IFPA]	LBV [IFPA]	
12.9	TRV [IFPA]	PBI [IFPA]	MLB [IFPA]	LBV [IFPA]		
19.2	PBI [IFPA]	TRV [IFPA]	MLB [IFPA]	LBV [IFPA]	VKZ [IFPA]	
19.8	LBV [IFPA]	MLB [IFPA]	TRV [IFPA]	VKZ [IFPA]		
20.4	LBV [IFPA]	MLB [IFPA]	TRV [IFPA]			
38.8	LBV [IFPA]	MLB [IFPA]	TRV [IFPA]	LAL [IFPA]		
47.4	LAL [IFPA]	MLB [IFPA]				
61.2	LAL [IFPA]	MLB [IFPA]	TRV [IFPA]			
61.5	LAL [IFPA]	MLB [IFPA]				
62.3	TRV [IFPA]	MLB [IFPA]	LAL [IFPA]			
74.0	TRV [IFPA]	MLB [IFPA]	LAL [IFPA]	ORL [IFPA]	SRQ [IFPA]	
75.7	TRV [IFPA]	MLB [IFPA]	SRQ [IFPA]			
75.9	TRV [IFPA]	MLB [IFPA]	LAL [IFPA]	ORL [IFPA]	SRQ [IFPA]	
87.0	ORL [IFPA]	MLB [IFPA]	TRV [IFPA]	LAL [IFPA]		
93.9	ORL [IFPA]	MLB [IFPA]	SRQ [IFPA]	TRV [IFPA]		
95.7	ORL [IFPA]	MLB [IFPA]	TRV [IFPA]			
96.0	ORL [IFPA]	MLB [IFPA]	LAL [IFPA]			

<b>Inertial Drift Segments</b>			
<b>#</b>	<b>Start Location</b>	<b>End Location</b>	<b>Length [NM]</b>

<b>Available DMEs by Waypoints</b>			
<b>Waypoint Before</b>	<b>Waypoint After</b>	<b>DME List</b>	<b>Suggested DMEs</b>
CCLUB	MATLK	LAL [IFPA], SRQ [IFPA], TRV [IFPA], VKZ [IFPA], LBV [IFPA], MLB [IFPA], PBI [IFPA], ORL [IFPA]	
MATLK	SLOAO	LAL [IFPA], SRQ [IFPA], TRV [IFPA], MLB [IFPA], ORL [IFPA]	
SLOAO	DORMS	LAL [IFPA], MLB [IFPA], ORL [IFPA]	

**DME DME Assessment Results for SLOAO1 path CCLUB\_DORMS**

**User Data Files**

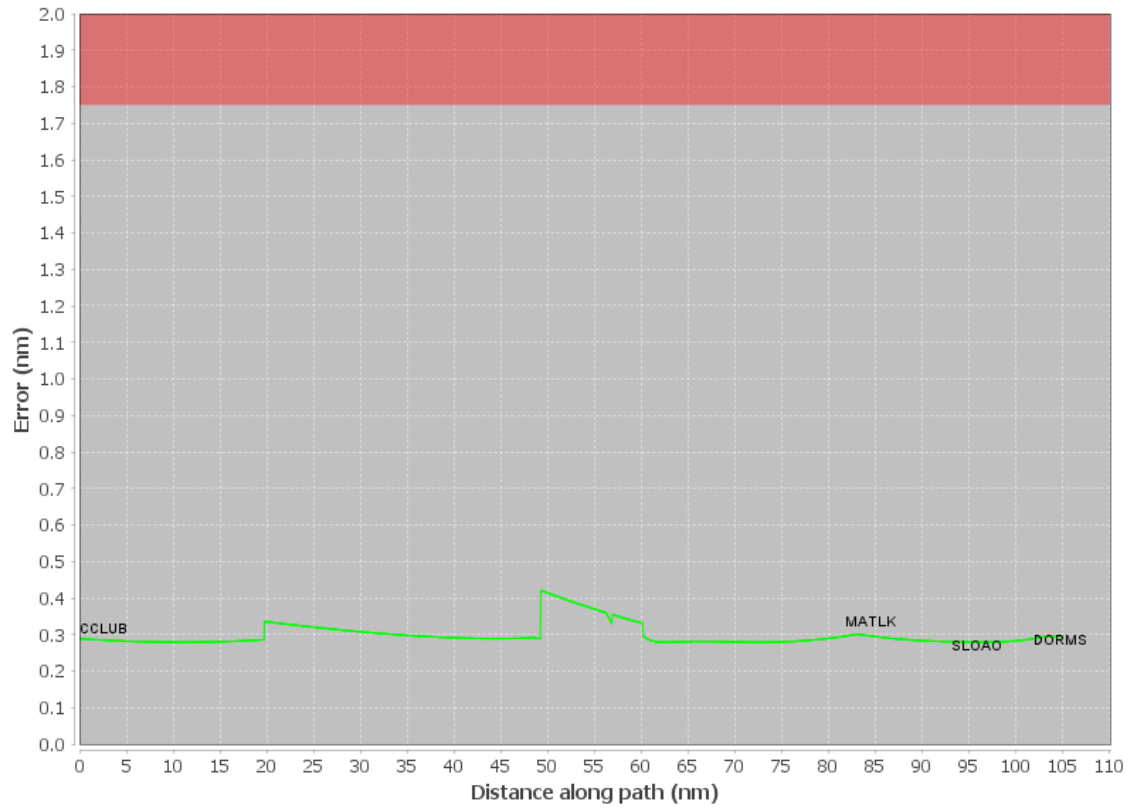
#	File Name
1	New Analysis.udt

**User DMEs**

#	Name	Lat/Lon	MAGVAR	Range	Elevation [ft]	Frequency	Replaces	Status	
1	LAL FAA 704224-67 LAL [IFPA]	N27° 59' 10.31", W082° 00' 50.06"	1.0 E	130	133.8	116.0	LAL FAA 704224-67		
	ESV:	Bearing [True]: 41.0° to 121.0° Bearing [Mag]: 40.0° to 120.0°				Arc Distance: Out to 102.0 NM Altitude: 6000.0 to 18000.0 ft			
2	TRV FAA 704266-73 TRV [IFPA]	N27° 40' 42.26", W080° 29' 23.04"	7.0 W	130	18.9	117.3	TRV FAA 704266-73		
	ESV:	Bearing [True]: 63.0° to 148.0° Bearing [Mag]: 70.0° to 155.0°				Arc Distance: Out to 91.0 NM Altitude: 6000.0 to 15000.0 ft			
3	ORL FAA 694096-71 ORL [IFPA]	N28° 32' 33.80", W081° 20' 06.05"	0.0 E	130	101.6	112.2	ORL FAA 694096-71		
	ESV:	Bearing [True]: 145.0° to 165.0° Bearing [Mag]: 145.0° to 165.0°				Arc Distance: Out to 72.0 NM Altitude: 3900.0 to 10000.0 ft			
4	PBI FAA 882483-58 PBI [IFPA]	N26° 40' 48.20", W080° 05' 11.36"	3.0 W	130	15.7	115.7	PBI FAA 882483-58		
	ESV:	Bearing [True]: 17.0° to 137.0° Bearing [Mag]: 20.0° to 140.0°				Arc Distance: Out to 78.0 NM Altitude: 5000.0 to 14600.0 ft			
5	LBV FAA 755486-41 LBV [IFPA]	N26° 49' 41.47", W081° 23' 29.18"	1.0 E	40	30	110.4	LBV FAA 755486-41		
	ESV:	Bearing [True]: 51.0° to 101.0° Bearing [Mag]: 50.0° to 100.0°				Arc Distance: Out to 106.0 NM Altitude: 8000.0 to 18000.0 ft			

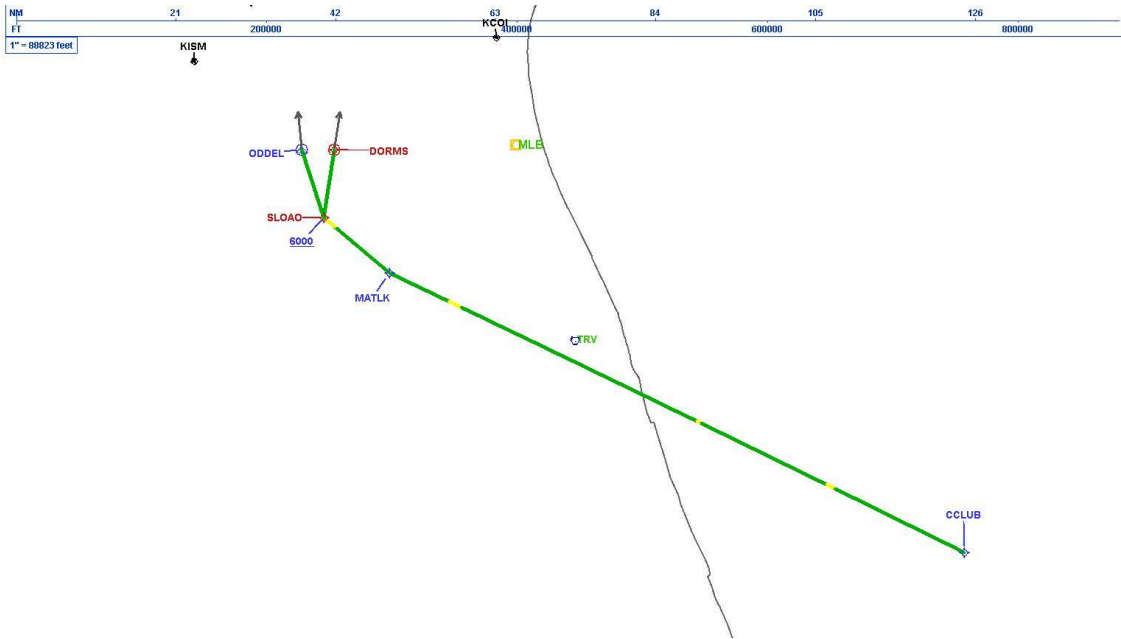
# DME DME Assessment Results for SLOAO1 path CCLUB\_DORMS

## DME Error



# DME DME Assessment Results for SLOAO1 path CCLUB\_DORMS

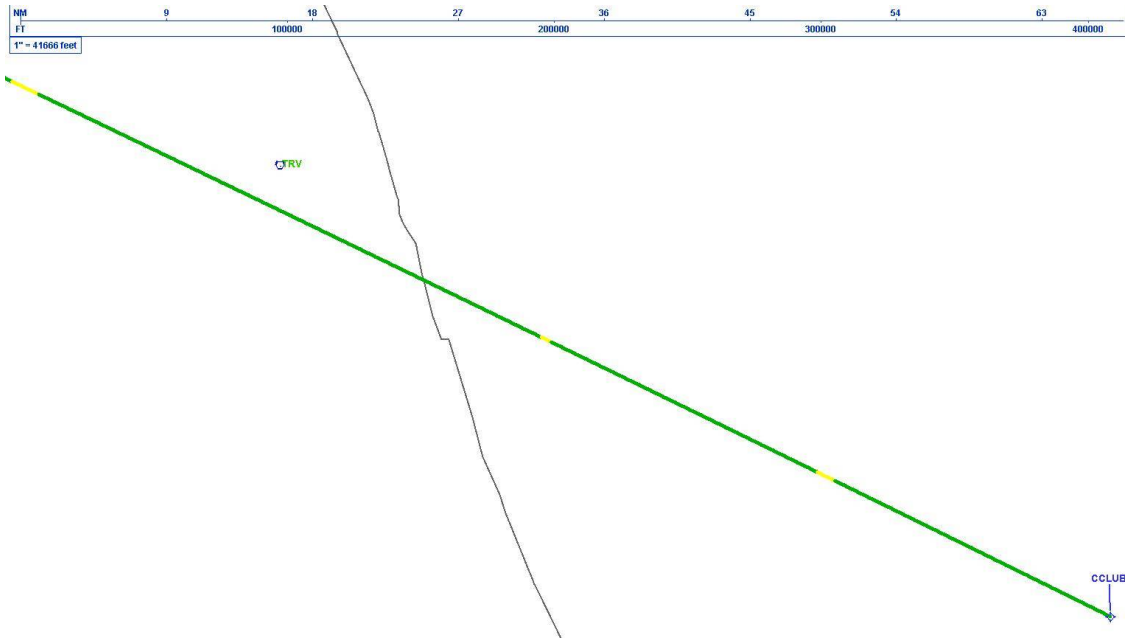
Graphic Depiction 1





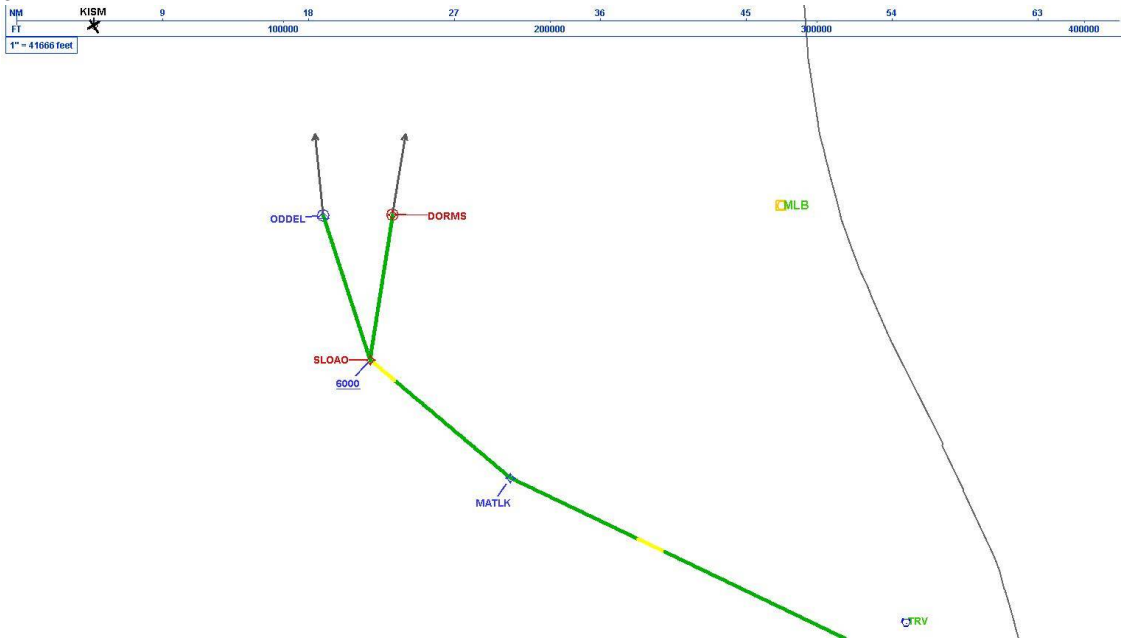
# DME DME Assessment Results for SLOAO1 path CCLUB\_DORMS

Graphic Depiction 2



# DME DME Assessment Results for SLOAO1 path CCLUB\_DORMS

Graphic Depiction 3



## DME DME Assessment Results for SLOAO1 path MATLK\_CCLUB

### Results Summary

Flyability:	Completed
DME/DME:	Completed - No Critical DMEs
Name:	Mark CTR Thompson
Project File:	C:\Users\Mark CTR Thompson\OneDrive - Federal Aviation Administration\Desktop\RNAV Projects\RNAV Projects 2024\MCO SIDS.STARS\KMCO SLOAO1 (RNAV) STAR\DME\KMCO SLOAO1 (RNAV) STAR DME 15 MAY 2024.tgs
Output File:	C:\Users\Mark CTR Thompson\OneDrive - Federal Aviation Administration\Desktop\RNAV Projects\RNAV Projects 2024\MCO SIDS.STARS\KMCO SLOAO1 (RNAV) STAR\DME\KMCO [IFPA] SLOAO1 20240515_0712 EDT\MATLK_CCLUB\KMCO SLOAO1 RNAV STAR MATLK CCLUB 20240515_0712 EDT.pdf
Procedure Name:	SLOAO1
Software: DmeDmePlugin:	7.3.0
Date/Time:	05/15/2024 07:12 EDT
Databases:	MITRE 3DEP 3 arcsec

### Failures

No Failures

### Warnings

No Warnings

### Informational

No Informational

### Notes For Flight Check

None

### Flight Plan

Name	Type	Lat/Lon	Altitude (ft)	VNAV Mode	Ground Speed (kts)	Turn Type	Leg Type
MATLK	WP	N27° 49' 36.54", W080° 57' 04.27"	8000	VNAV	200	FLY_BY	TF
CCLUB	WP	N27° 12' 58.23", W079° 31' 16.72"	8000	VNAV	200	FLY_BY	TF

### Flyability

Flight Type:	RNAV_STAR
Selected Airport:	KMCO [IFPA]
Climb Gradient:	None assigned
Speeds:	200 Ground Speed to 11000 FT
	240 Ground Speed to 18000 FT
	260 Ground Speed to 24000 FT
	340 Ground Speed above 24000 FT
Descent During a Turn:	Allowed
VNAV Mode:	Flight Plan

**DME DME Assessment Results for SLOAO1 path MATLK\_CCLUB**

<b>DME/DME</b>	
RNP:	RNP 2
Flight Mode:	Manual
Line of Sight (DTED Level 0 Max):	Evaluated
Inertial Drift:	Enabled
Initial Drift:	0.558 NM
INS Drift Rate:	8.0 NM/Hour
Range Mode:	OSV
RNP Edges:	Evaluated
Min DME Range:	3.0 NM
DME Types:	DME, VOR-DME, VORTAC, TACAN
DME Include Angles:	30 to 150
Critical DMEs:	Not Allowed
DoD Facilities:	Not included
Foreign Facilities:	Included
High DMEs:	Included
Low DMEs:	Included
Terminal DMEs:	Included
Flight Check DMEs:	Not selected
Higher Altitudes:	Not Evaluated
Near Maximum Altitude:	Not Evaluated
Automatic ESVs:	Enabled
Disabled DMEs:	None

<b>DME/DME (Continued)</b>										
<b>DMEs Used</b>										
#	Name	Lat/Lon	MAGVAR	Range	Type	Source	Critical	Status	Time	Distance
1	LAL	N27° 59' 10.31", W082° 00' 50.06"	1.0 E	130	H	IFPA	NO	Enabled		
2	SRQ	N27° 24' 25.26", W082° 33' 49.18"	5.0 W	130	DH	IFPA	NO	Enabled		
3	TRV	N27° 40' 42.26", W080° 29' 23.04"	7.0 W	130	H	IFPA	NO	Enabled		
4	VKZ	N25° 45' 06.85", W080° 09' 16.00"	4.0 W	130	DH	IFPA	NO	Enabled		
5	LBV	N26° 49' 41.47", W081° 23' 29.18"	1.0 E	40	L	IFPA	NO	Enabled		
6	MLB	N28° 06' 19.12", W080° 38' 06.46"	7.0 W	130	DH	IFPA	NO	Enabled		
7	PBI	N26° 40' 48.20", W080° 05' 11.36"	3.0 W	130	H	IFPA	NO	Enabled		
8	ORL	N28° 32' 33.80", W081° 20' 06.05"	0.0 E	130	H	IFPA	NO	Enabled		

**DME DME Assessment Results for SLOAO1 path MATLK\_CCLUB**

Flight Check DME Selection						
Distance [NM]	Selected DMEs					Alternate
0.0	ORL [IFPA]	MLB [IFPA]	TRV [IFPA]	SRQ [IFPA]	LAL [IFPA]	
8.8	TRV [IFPA]	MLB [IFPA]	SRQ [IFPA]			
8.9	TRV [IFPA]	MLB [IFPA]	LAL [IFPA]	ORL [IFPA]	SRQ [IFPA]	
10.6	TRV [IFPA]	MLB [IFPA]	LAL [IFPA]			
22.3	LAL [IFPA]	MLB [IFPA]				
23.2	LAL [IFPA]	MLB [IFPA]	TRV [IFPA]			
23.4	LAL [IFPA]	MLB [IFPA]				
37.3	LBV [IFPA]	MLB [IFPA]	TRV [IFPA]	LAL [IFPA]		
45.9	LBV [IFPA]	MLB [IFPA]	TRV [IFPA]			
64.2	LBV [IFPA]	MLB [IFPA]	TRV [IFPA]	VKZ [IFPA]		
64.9	PBI [IFPA]	TRV [IFPA]	MLB [IFPA]	LBV [IFPA]	VKZ [IFPA]	
65.5	PBI [IFPA]	TRV [IFPA]	MLB [IFPA]	LBV [IFPA]		
71.7	TRV [IFPA]	PBI [IFPA]	MLB [IFPA]	VKZ [IFPA]	LBV [IFPA]	

Inertial Drift Segments			
#	Start Location	End Location	Length [NM]

Available DMEs by Waypoints			
Waypoint Before	Waypoint After	DME List	Suggested DMEs
MATLK	CCLUB	LAL [IFPA], SRQ [IFPA], TRV [IFPA], VKZ [IFPA], LBV [IFPA], MLB [IFPA], PBI [IFPA], ORL [IFPA]	

**User Data Files**

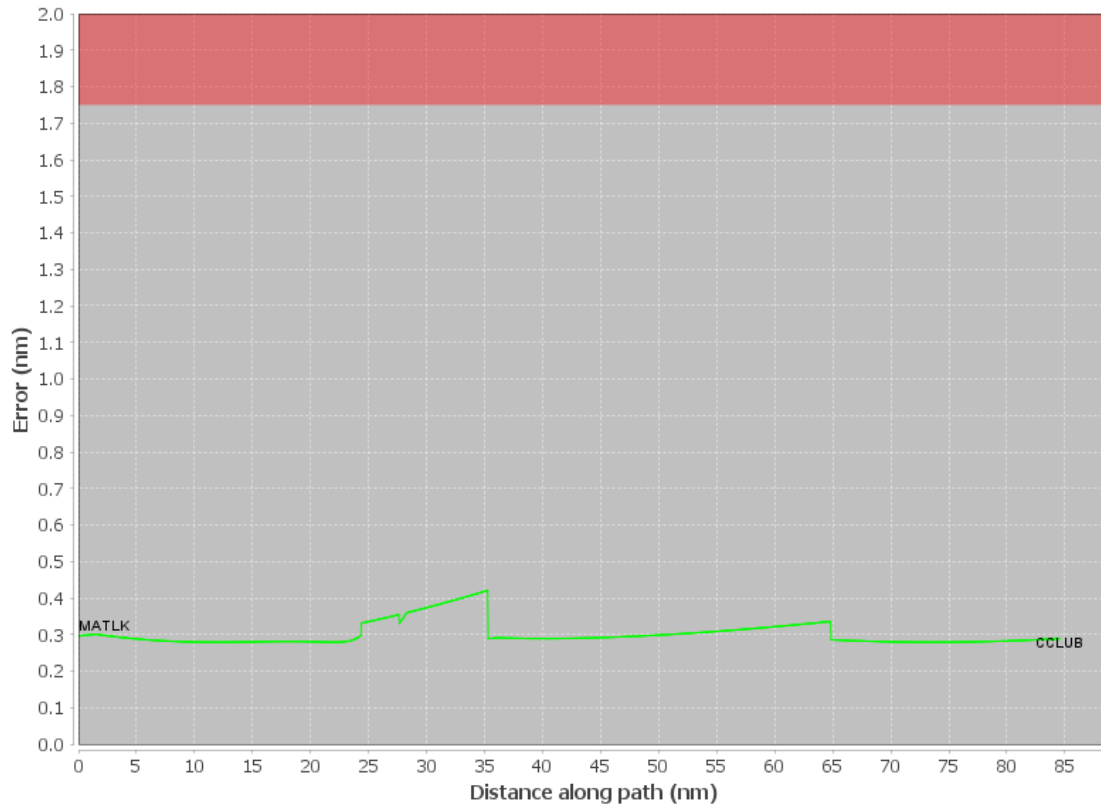
#	File Name
1	New Analysis.udt

**User DMEs**

#	Name	Lat/Lon	MAGVAR	Range	Elevation [ft]	Frequency	Replaces	Status
1	LAL FAA 704224-67 LAL [IFPA]	N27° 59' 10.31", W082° 00' 50.06"	1.0 E	130	133.8	116.0	LAL FAA 704224-67	
	ESV:	Bearing [True]: 41.0° to 121.0° Bearing [Mag]: 40.0° to 120.0°					Arc Distance: Out to 102.0 NM Altitude: 6000.0 to 18000.0 ft	
2	TRV FAA 704266-73 TRV [IFPA]	N27° 40' 42.26", W080° 29' 23.04"	7.0 W	130	18.9	117.3	TRV FAA 704266-73	
	ESV:	Bearing [True]: 63.0° to 148.0° Bearing [Mag]: 70.0° to 155.0°					Arc Distance: Out to 91.0 NM Altitude: 6000.0 to 15000.0 ft	
3	ORL FAA 694096-71 ORL [IFPA]	N28° 32' 33.80", W081° 20' 06.05"	0.0 E	130	101.6	112.2	ORL FAA 694096-71	
	ESV:	Bearing [True]: 145.0° to 165.0° Bearing [Mag]: 145.0° to 165.0°					Arc Distance: Out to 72.0 NM Altitude: 3900.0 to 10000.0 ft	
4	PBI FAA 882483-58 PBI [IFPA]	N26° 40' 48.20", W080° 05' 11.36"	3.0 W	130	15.7	115.7	PBI FAA 882483-58	
	ESV:	Bearing [True]: 17.0° to 137.0° Bearing [Mag]: 20.0° to 140.0°					Arc Distance: Out to 78.0 NM Altitude: 5000.0 to 14600.0 ft	
5	LBV FAA 755486-41 LBV [IFPA]	N26° 49' 41.47", W081° 23' 29.18"	1.0 E	40	30	110.4	LBV FAA 755486-41	
	ESV:	Bearing [True]: 51.0° to 101.0° Bearing [Mag]: 50.0° to 100.0°					Arc Distance: Out to 106.0 NM Altitude: 8000.0 to 18000.0 ft	

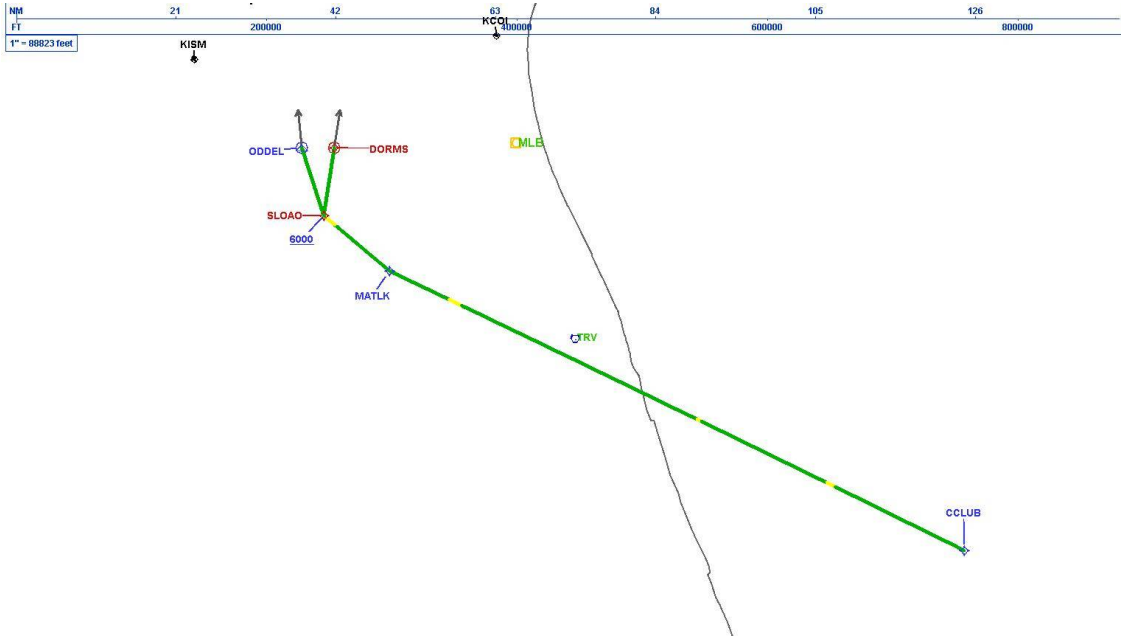
# DME DME Assessment Results for SLOAO1 path MATLK\_CCLUB

## DME Error



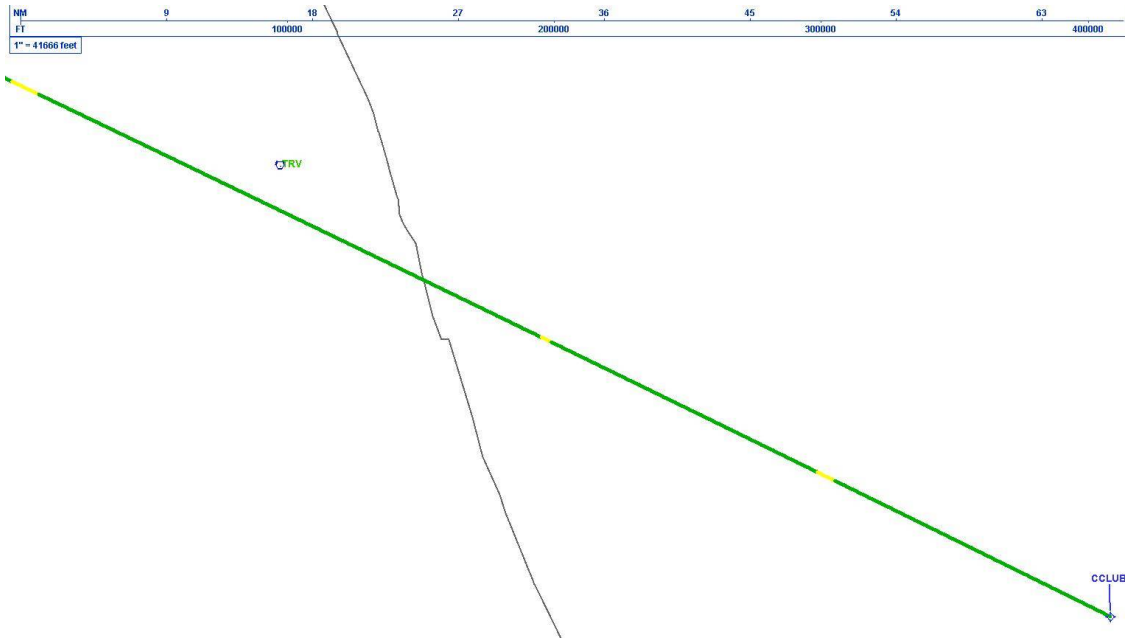
# DME DME Assessment Results for SLOAO1 path MATLK\_CCLUB

Graphic Depiction 1



# DME DME Assessment Results for SLOAO1 path MATLK\_CCLUB

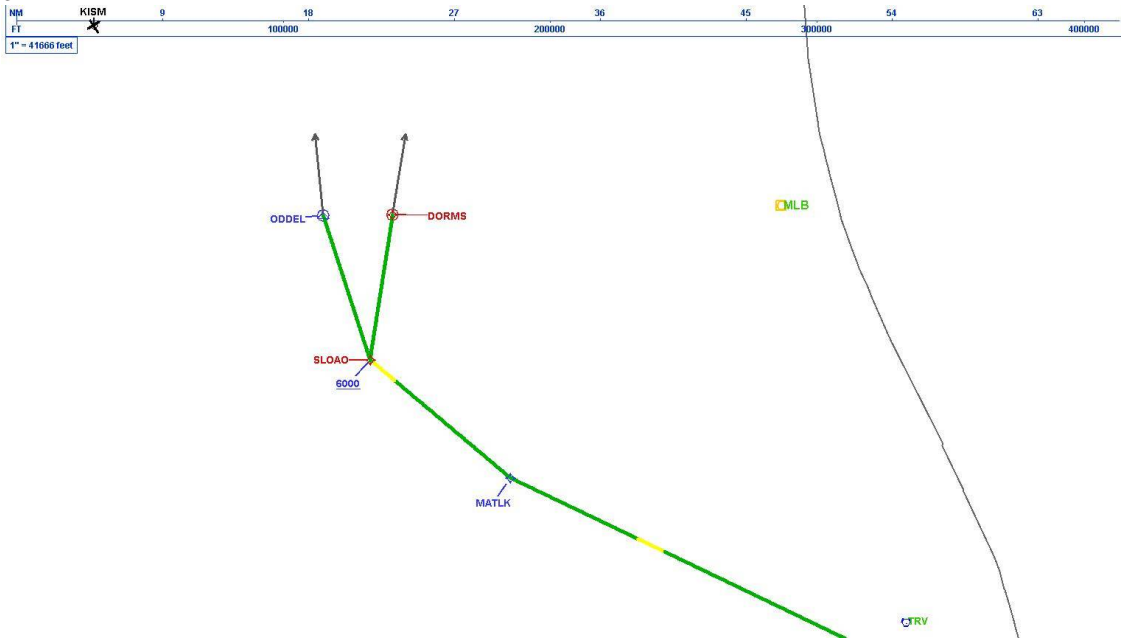
Graphic Depiction 2





# DME DME Assessment Results for SLOAO1 path MATLK\_CCLUB

Graphic Depiction 3



## DME DME Assessment Results for SLOAO1 path SLOAO\_ODDEL

### Results Summary

Flyability:	Completed
DME/DME:	Completed - No Critical DMEs
Name:	Mark CTR Thompson
Project File:	C:\Users\Mark CTR Thompson\OneDrive - Federal Aviation Administration\Desktop\RNAV Projects\RNAV Projects 2024\MCO SIDS.STARS\KMCO SLOAO1 (RNAV) STAR\DME\KMCO SLOAO1 (RNAV) STAR DME 15 MAY 2024.tgs
Output File:	C:\Users\Mark CTR Thompson\OneDrive - Federal Aviation Administration\Desktop\RNAV Projects\RNAV Projects 2024\MCO SIDS.STARS\KMCO SLOAO1 (RNAV) STAR\DME\KMCO [IFPA] SLOAO1 20240515_0712 EDT\SLOAO_ODDEL\KMCO SLOAO1 RNAV STAR SLOAO ODDEL 20240515_0712 EDT.pdf
Procedure Name:	SLOAO1
Software: DmeDmePlugin:	7.3.0
Date/Time:	05/15/2024 07:12 EDT
Databases:	MITRE 3DEP 3 arcsec

### Failures

No Failures

### Warnings

No Warnings

### Informational

No Informational

### Notes For Flight Check

None

### Flight Plan

Name	Type	Lat/Lon	Altitude (ft)	VNAV Mode	Ground Speed (kts)	Turn Type	Leg Type
SLOAO	WP	N27° 56' 52.37", W081° 06' 53.68"	6000	VNAV	200	FLY_BY	TF
ODDEL	WP	N28° 05' 45.51", W081° 10' 10.24"	6000	VNAV	200	FLY_OVER	TF

### Flyability

Flight Type:	RNAV_STAR
Selected Airport:	KMCO [IFPA]
Climb Gradient:	None assigned
Speeds:	200 Ground Speed to 11000 FT
	240 Ground Speed to 18000 FT
	260 Ground Speed to 24000 FT
	340 Ground Speed above 24000 FT
Descent During a Turn:	Allowed
VNAV Mode:	Flight Plan

## DME DME Assessment Results for SLOAO1 path SLOAO\_ODDEL

DME/DME	
RNP:	RNP 2
Flight Mode:	Manual
Line of Sight (DTED Level 0 Max):	Evaluated
Inertial Drift:	Enabled
Initial Drift:	0.558 NM
INS Drift Rate:	8.0 NM/Hour
Range Mode:	OSV
RNP Edges:	Evaluated
Min DME Range:	3.0 NM
DME Types:	DME, VOR-DME, VORTAC, TACAN
DME Include Angles:	30 to 150
Critical DMEs:	Not Allowed
DoD Facilities:	Not included
Foreign Facilities:	Included
High DMEs:	Included
Low DMEs:	Included
Terminal DMEs:	Included
Flight Check DMEs:	Not selected
Higher Altitudes:	Not Evaluated
Near Maximum Altitude:	Not Evaluated
Automatic ESVs:	Enabled
Disabled DMEs:	None

DME/DME (Continued)										
DMEs Used										
#	Name	Lat/Lon	MAGVAR	Range	Type	Source	Critical	Status	Time	Distance
1	LAL	N27° 59' 10.31", W082° 00' 50.06"	1.0 E	130	H	IFPA	NO	Enabled		
2	TRV	N27° 40' 42.26", W080° 29' 23.04"	7.0 W	130	H	IFPA	NO	Enabled		
3	MLB	N28° 06' 19.12", W080° 38' 06.46"	7.0 W	130	DH	IFPA	NO	Enabled		
4	ORL	N28° 32' 33.80", W081° 20' 06.05"	0.0 E	130	H	IFPA	NO	Enabled		

Flight Check DME Selection						
Distance [NM]	Selected DMEs					Alternate
0.0	ORL [IFPA]	MLB [IFPA]	TRV [IFPA]			
0.2	ORL [IFPA]	MLB [IFPA]	LAL [IFPA]			

Inertial Drift Segments			
#	Start Location	End Location	Length [NM]

Available DMEs by Waypoints			
Waypoint Before	Waypoint After	DME List	Suggested DMEs
SLOAO	ODDEL	LAL [IFPA], TRV [IFPA], MLB [IFPA], ORL [IFPA]	

**DME DME Assessment Results for SLOAO1 path SLOAO\_ODDEL**

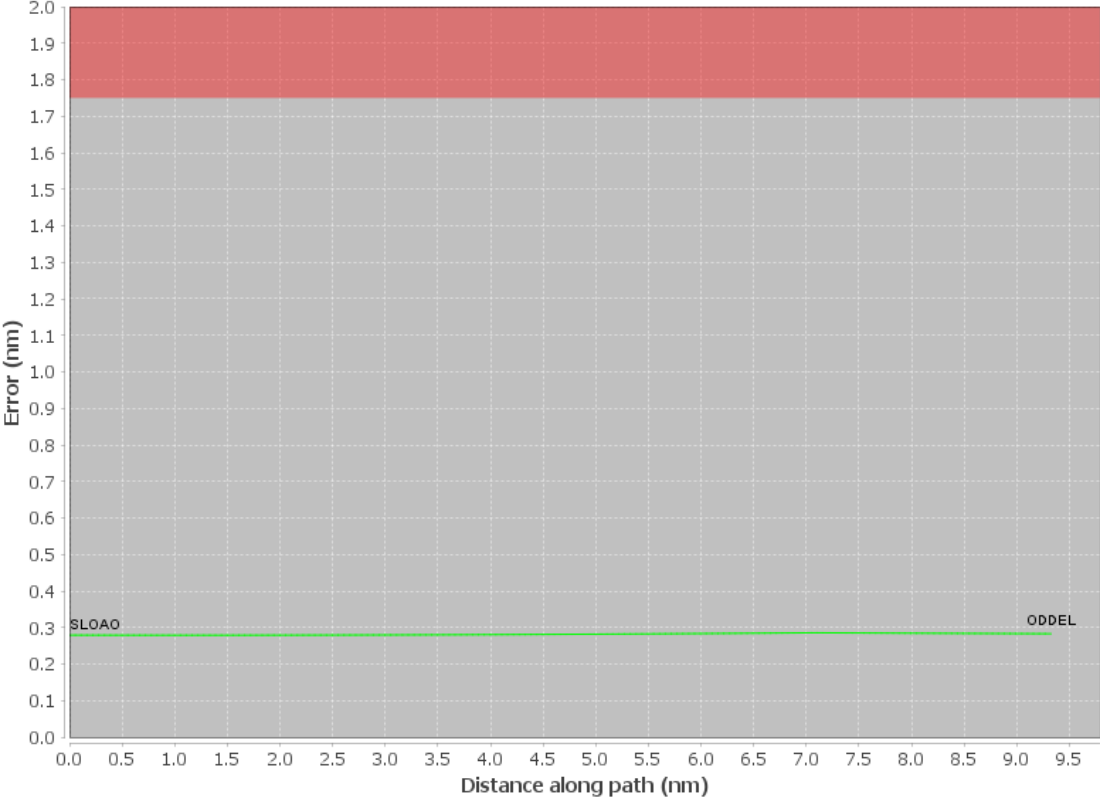
**User Data Files**

#	File Name
1	New Analysis.udt

**User DMEs**

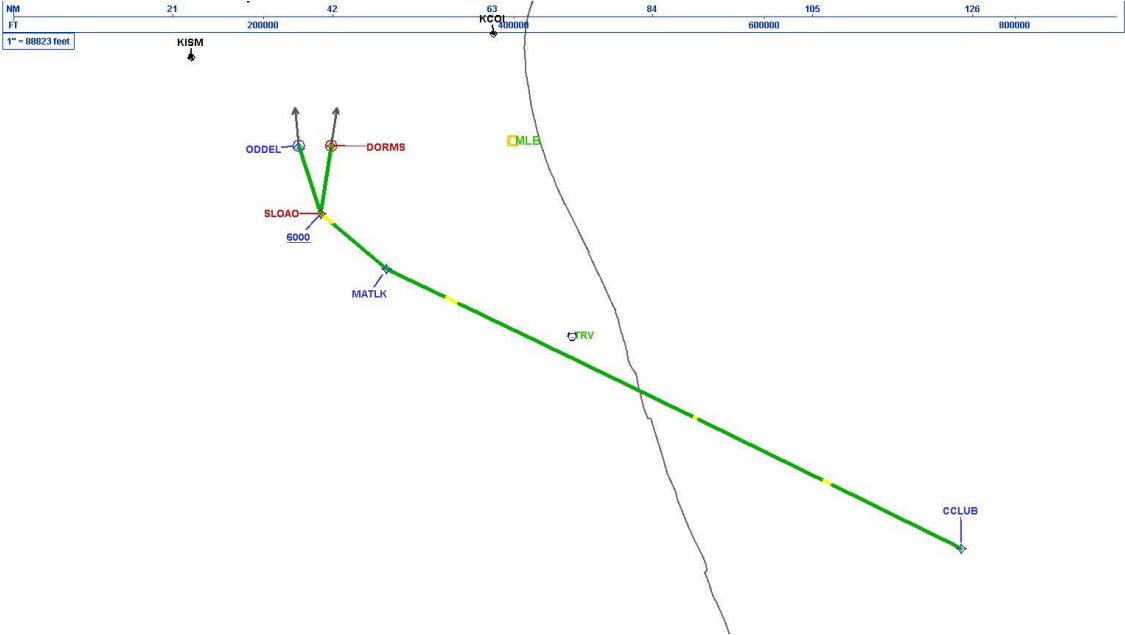
#	Name	Lat/Lon	MAGVAR	Range	Elevation [ft]	Frequency	Replaces	Status
1	LAL FAA 704224-67 LAL [IFPA]	N27° 59' 10.31", W082° 00' 50.06"	1.0 E	130	133.8	116.0	LAL FAA 704224-67	
	ESV:	Bearing [True]: 41.0° to 121.0° Bearing [Mag]: 40.0° to 120.0°				Arc Distance: Out to 102.0 NM Altitude: 6000.0 to 18000.0 ft		
2	TRV FAA 704266-73 TRV [IFPA]	N27° 40' 42.26", W080° 29' 23.04"	7.0 W	130	18.9	117.3	TRV FAA 704266-73	
	ESV:	Bearing [True]: 63.0° to 148.0° Bearing [Mag]: 70.0° to 155.0°				Arc Distance: Out to 91.0 NM Altitude: 6000.0 to 15000.0 ft		
3	ORL FAA 694096-71 ORL [IFPA]	N28° 32' 33.80", W081° 20' 06.05"	0.0 E	130	101.6	112.2	ORL FAA 694096-71	
	ESV:	Bearing [True]: 145.0° to 165.0° Bearing [Mag]: 145.0° to 165.0°				Arc Distance: Out to 72.0 NM Altitude: 3900.0 to 10000.0 ft		
4	PBI FAA 882483-58 PBI [IFPA]	N26° 40' 48.20", W080° 05' 11.36"	3.0 W	130	15.7	115.7	PBI FAA 882483-58	
	ESV:	Bearing [True]: 17.0° to 137.0° Bearing [Mag]: 20.0° to 140.0°				Arc Distance: Out to 78.0 NM Altitude: 5000.0 to 14600.0 ft		
5	LBV FAA 755486-41 LBV [IFPA]	N26° 49' 41.47", W081° 23' 29.18"	1.0 E	40	30	110.4	LBV FAA 755486-41	
	ESV:	Bearing [True]: 51.0° to 101.0° Bearing [Mag]: 50.0° to 100.0°				Arc Distance: Out to 106.0 NM Altitude: 8000.0 to 18000.0 ft		

**DME Error**



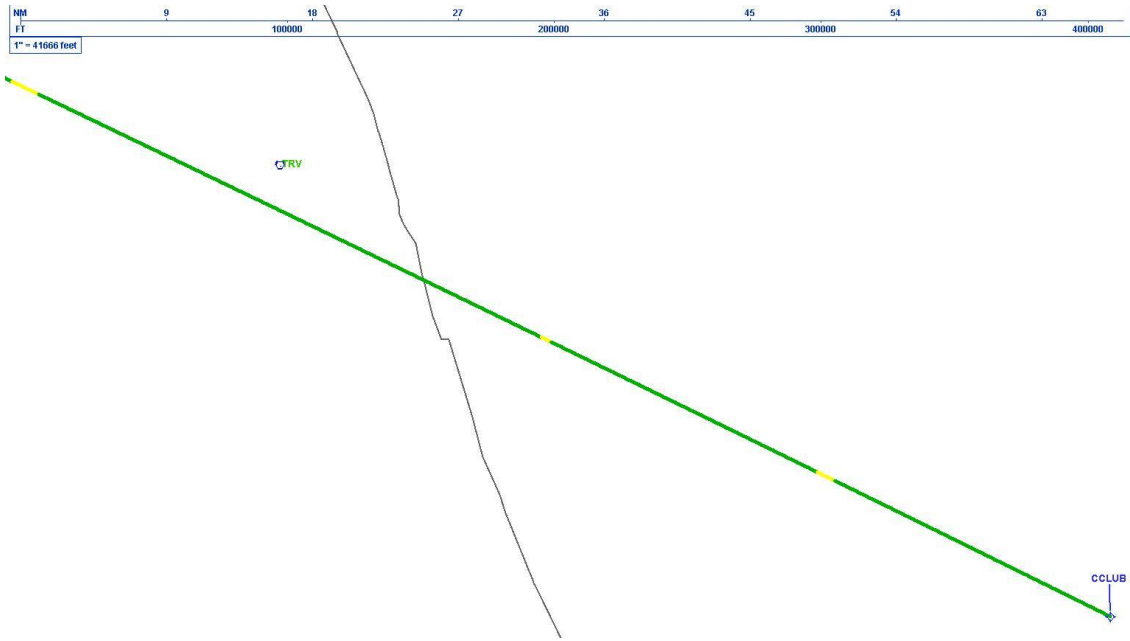
# DME DME Assessment Results for SLOAO1 path SLOAO\_ODDEL

Graphic Depiction 1



# DME DME Assessment Results for SLOAO1 path SLOAO\_ODDEL

Graphic Depiction 2



# DME DME Assessment Results for SLOAO1 path SLOAO\_ODDEL

Graphic Depiction 3

