

| | | | | | |
|---|------------------------------|---|-------------------------------------|---|--|
| Flight Procedures Cover Page | Task Action: FLIGHT CHECK | Task Type: IAP | Estimated Chart Date: 05/14/2026 | APWS Task ID: 65F14F381FF64B0BA20A82DDE50BF6CD | APWS Project ID: 7333BDE053AC4A4E9901D13490591395 |
| Procedure: RNAV (GPS) RWY 15 AMDT 1B | | Enroute: NO | Specialist: Swinson, Robert | | Agreement Number: |
| Airport ID: KISM | | | Airport City: ORLANDO | | State: FL |
| Facility ID: | Facility Type: | Flight Inspection Remark Type: New FC Slot | | | |

Procedure Comments:
ACTIVE AIRNAV DATA USED FOR KISM AIRPORT AND RUNWAYS.

CANCELS FDC NOTAM 5/5433.

CONTACT CASIMIR TABAKA 1-405-954-7931.



FIPC BASIC FORM

| | | | | | |
|--|---|---|-----------------------|---|--|
| PROCEDURE: RNAV (GPS) RWY 15 AMDT 1B | | AIRPORT NAME: KISSIMMEE GATEWAY | | AIRPORT ID: KISM | SPECIAL CONTROL NO: AG-02-080-26 |
| FAC ID: KISM15.01 | | CITY: ORLANDO | | ST: FL | ORIG CHART DATE: 05/14/2026 |
| DFL TYPE: PROC/S | THIRD PARTY: <input type="checkbox"/> YES | EST. TIME ON SITE: 0.4 | REIMB. NUMBER: | PTS TASK ID: 65F14F381FF64B0BA20A82DDE50BF6CD | |

PREFLIGHT NOTES

| | |
|------------------|--|
| REVIEWER: | DATE: |
| COMMENTS: | CHECK ONE: <input type="checkbox"/> FLT CK REQ <input type="checkbox"/> NFCR <input type="checkbox"/> REJECT |
| | YES NO |
| | CPV COMPLETE? <input checked="" type="checkbox"/> X <input type="checkbox"/> |

PROCEDURE RESULTS

| | | | | |
|--|-------------------------|---|--|--|
| INSPECTION DATE: 02/19/2026 | CREW #: VN426 | N #: N66 | INSTRUMENT PROCEDURE STATUS: <input checked="" type="checkbox"/> SAT <input type="checkbox"/> SAT W/CHANGES <input type="checkbox"/> UNSAT | ARINC CODING: <input checked="" type="checkbox"/> SAT <input type="checkbox"/> SAT/GOLD <input type="checkbox"/> UNSAT |
| FLIGHT INSPECTOR SIGNATURE: robert e williams @ 02/19/2026 17:05 | | PRINTED NAME: WILLIAMS, ROBERT EMIL | | NOTAM INITIATED? <input type="checkbox"/> YES <input checked="" type="checkbox"/> NO |

FLIGHT INSPECTOR REMARKS:
SPECIAL NUMBER AG-02-080-26: KISSIMMEE GATEWAY (ISM), ORLANDO, FL, RNAV (GPS) RWY 15, AMDT 1B, SAT

IN-FLIGHT OBSTACLE REPORT

| | | | | |
|--------------------------|---------------------------------|-----------------------------|-----------------------------------|-----------------------------------|
| OBSTRUCTION ID #: | COORDINATES OR LOCATION: | GNSS ALTITUDE (MSL): | BAROMETRIC ALTITUDE (MSL): | HEIGHT ABOVE GROUND LEVEL: |
|--------------------------|---------------------------------|-----------------------------|-----------------------------------|-----------------------------------|


| | | | |
|--|------------------------|-----------------------------|---------------------------------------|
| WAAS CH 45507 W15A | APP CRS 153° | Rwy Ldg TDZE Apt Elev | 6001 82 82 |
|--|------------------------|-----------------------------|---------------------------------------|

RNAV (GPS) RWY 15

KISSIMMEE GATEWAY (ISM)

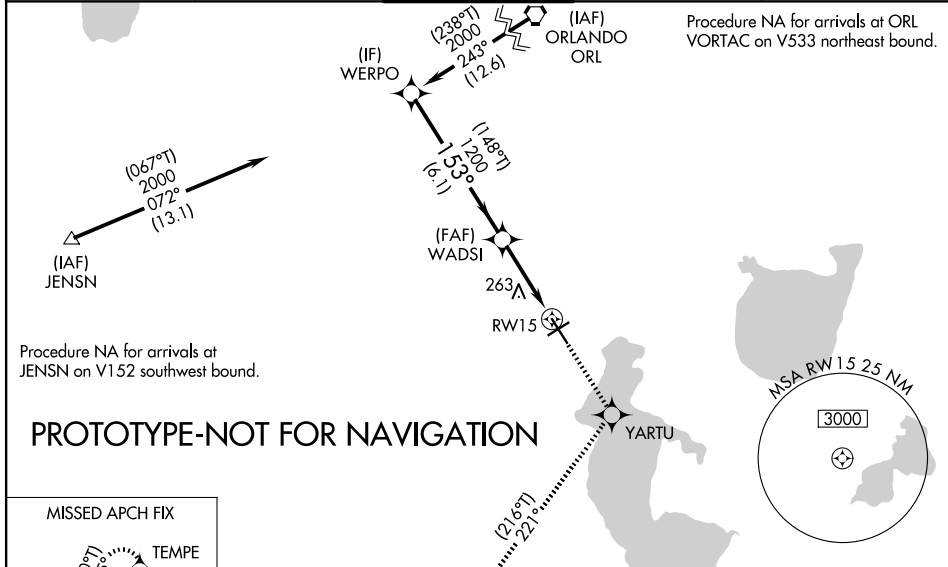
RNP APCH -GPS.

⚠ Baro-VNAV and VDP NA when using MCO altimeter setting. For uncompensated Baro-VNAV systems, LNAV/VNAV NA below -15°C or above 54°C. Inop table does not apply to LPV all Cats. When local altimeter setting not received, use MCO altimeter setting and increase LPV DA to 360 feet; increase LNAV/VNAV DA to 548 feet and all visibilities ½ SM. Increase all MDAs 40 feet and LNAV visibility Cat C/D ¼ SM, and Circling visibility Cat C ¼ SM.

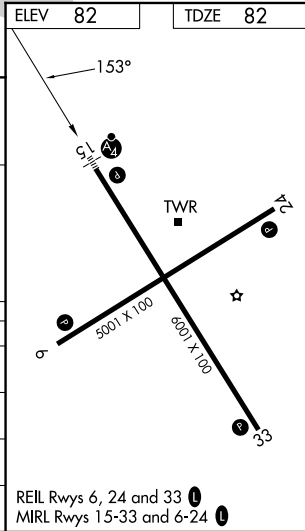
MALSF 

MISSED APPROACH: Climb to 2200 direct YARTU and on track 221° to TEMPE and hold

| | | | | |
|------------------------|---------------------------------------|--|-------------------------|-------------------------|
| ATIS 128.775 | ORLANDO APP CON 119.4 351.9 | KISSIMMEE TOWER ★ 124.45 (CTAF) 0 | GND CON 121.7 | UNICOM 122.95 |
|------------------------|---------------------------------------|--|-------------------------|-------------------------|



| | | | | |
|--------------|------------------|-------------|------------------------|------------------------|
| | ELEV 82 | TDZE 82 | | |
| | 153° | | | |
| | 2200 | YARTU | | |
| | tr 221° | TEMPE | | |
| | 1.2 NM to RWY 15 | | | |
| | GP 3.00° | TCH 51 | | |
| | 2000 | 1200 | | |
| | (148°T) | 153° | | |
| | 6.1 NM | 2.1 NM | | |
| | 1.2 | | | |
| CATEGORY | A | B | C | D |
| LPV DA | | 332-¾ | 250 (300-¾) | |
| LNAV/VNAV DA | | 520-1 | 438 (500-1) | |
| LNAV MDA | 520-¾ | 438 (500-¾) | 520-1¼ 438 (500-1¼) | 520-1½ 438 (500-1½) |
| CIRCLING | 680-1 | 598 (600-1) | 680-1½ 598 (600-1½) | 700-2 618 (700-2) |



| | | | |
|--|------------------------|-----------------------------|---------------------------------------|
| WAAS CH 45507 W15A | APP CRS 153° | Rwy Ldg TDZE Apt Elev | 6001 82 82 |
|--|------------------------|-----------------------------|---------------------------------------|

OLD

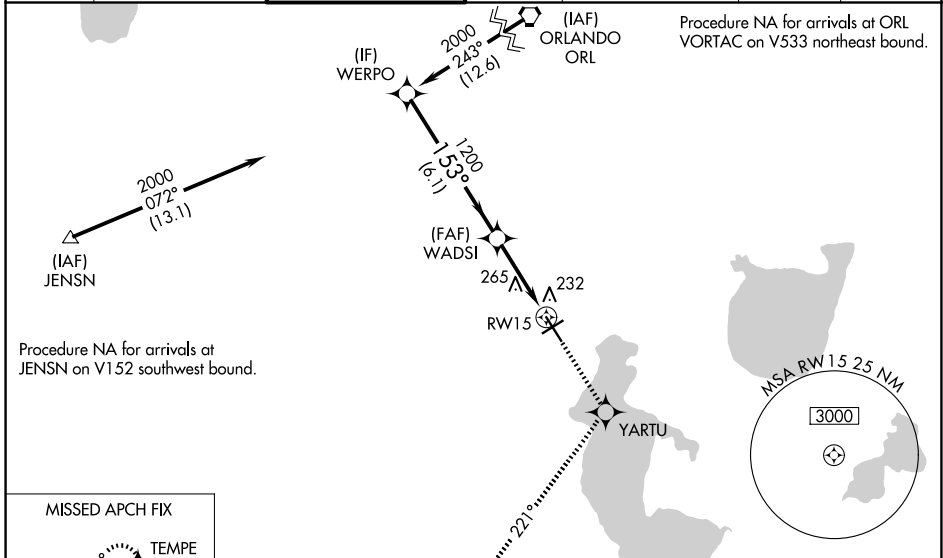
RNAV (GPS) RWY 15
KISSIMMEE GATEWAY (ISM)

⚠ For uncompensated Baro-VNAV systems, LNAV/VNAV NA below -1.5°C (5°F) or above 48°C (118°F). DME/DME RNP-0.3 NA. VDP and Baro-VNAV NA when using Orlando Intl altimeter setting. Inoperative table does not apply to LNAV/VNAV all Cats and LNAV Cat C. When local altimeter setting not received, use Orlando Intl altimeter setting and increase LPV DA all Cats to 309, LNAV/VNAV DA all Cats to 559, and all MDA 40 feet; increase LNAV/VNAV all Cats and Circling Cat C visibility ¼ mile.

MALSf

MISSED APPROACH: Climb to 2200 direct YARTU and on track 221° to TEMPE and hold

| | | | | | | |
|------------------------|---------------------------------------|---|--------------------------|--|-------------------------|-------------------------|
| ATIS 128.775 | ORLANDO APP CON 119.4 351.9 | KISSIMMEE TOWER * 124.45 (CTAF) | CLNC DEL 121.7 | CLNC DEL 123.95 (When twr closed) | GND CON 121.7 | UNICOM 122.95 |
|------------------------|---------------------------------------|---|--------------------------|--|-------------------------|-------------------------|



| | | | | |
|--------------|-------------|-----------------|------------------------|------------------------|
| | ELEV 82 | TDZE 82 | | |
| | 153° | | | |
| | CL | TWR | | |
| | 500' x 100' | 500' x 100' | | |
| | 33 | | | |
| | WERPO | YARTU tr 221° | | |
| | 2000 | TEMPE | | |
| | 153° | | | |
| | 1200 | | | |
| | WADSI | | | |
| | 1200 | | | |
| | 6.1 NM | 2.1 NM | | |
| | 1.2 NM | | | |
| | GP 3.00° | *1.2 NM to RW15 | | |
| | TCH 51 | *LNAV only. | | |
| CATEGORY | A | B | C | D |
| LPV DA | | 282-¾ | 200 (200-¾) | |
| LNAV/VNAV DA | | 532-1½ | 450 (500-1½) | |
| LNAV MDA | 520-¾ | 438 (500-¾) | 520-1¼ 438 (500-1¼) | 520-1½ 438 (500-1½) |
| CIRCLING | 680-1 | 598 (600-1) | 680-1½ 598 (600-1½) | 700-2 618 (700-2) |

| |
|-------------------------|
| REIL Rwy 6, 24 and 33 |
| MIRL Rwy 15-33 and 6-24 |

SE-3, 30 OCT 2025 to 27 NOV 2025

SE-3, 30 OCT 2025 to 27 NOV 2025