

FEDERAL AVIATION ADMINISTRATION
FLIGHT STANDARDS SERVICE
STANDARD TERMINAL ARRIVAL (STAR)

Bearings, headings, courses, tracks and radials are magnetic. Elevations and altitudes are in feet, MSL. Altitudes are minimum altitudes unless otherwise indicated.
Ceilings are in feet above airport elevation. Distances are in nautical miles. Visibilities are in statute miles or feet RVR unless otherwise indicated.

Arrival Name	Number	STAR Computer Code	Superseded Number	Dated	Effective Date
POWDA (RNAV)	TWO	CREKK.POWDA2	ONE	07/11/2024	

TRANSITION ROUTES:

Transition Name	Transition Computer Codes	From FIX/NAVAID	To FIX/NAVAID	Course	Distance	MEA	MOCA	MAA	Crossing Altitudes / Fixes
-----------------	------------------------------	--------------------	------------------	--------	----------	-----	------	-----	----------------------------

ARRIVAL ROUTE DESCRIPTION:

LANDING RWY 12: FROM CREKK ON TRACK 254.35/72.11 TO CROSS POWDA AT 17000 AND AT OR BELOW 250 KIAS, THEN ON TRACK 262.08/19.82 TO CROSS JOLIE AT OR ABOVE 14000, THEN ON TRACK 261.74/18.77 TO CROSS RUFSS AT OR ABOVE 11000, THEN ON TRACK 254.21/7.14 TO CROSS KICDO AT OR ABOVE 10000 AND AT 220 KIAS. EXPECT ASSIGNED APPROACH OR RADAR VECTORS TO FINAL APPROACH COURSE.

PBN REQUIREMENT NOTES:

RNAV 1 - GPS

EQUIPMENT REQUIREMENT NOTES:

RADAR REQUIRED

PROCEDURAL DATA NOTES:

NOTE: GPS REQUIRED

FIXES AND/OR HOLDING PATTERNS:

COMMUNICATIONS:

CHART: SALT LAKE CITY CENTER
CHART: BOZEMAN TWR, BIG SKY GND CON

AIRPORTS SERVED:

AIRPORT ID	CITY	STATE
BZN	BOZEMAN	MT

LOST COMMUNICATIONS PREFERENCES:

REMARKS:



FEDERAL AVIATION ADMINISTRATION
FLIGHT STANDARDS SERVICE
STANDARD TERMINAL ARRIVAL (STAR)

Bearings, headings, courses, tracks and radials are magnetic. Elevations and altitudes are in feet, MSL. Altitudes are minimum altitudes unless otherwise indicated.
Ceilings are in feet above airport elevation. Distances are in nautical miles. Visibilities are in statute miles or feet RVR unless otherwise indicated.

Arrival Name	Number	STAR Computer Code	Superseded Number	Dated	Effective Date
POWDA (RNAV)	TWO	CREKK.POWDA2	ONE	07/11/2024	

ADDITIONAL FLIGHT DATA:

DME/DME ASSESSMENT: UNSAT.
MAG VAR: BZN 13E/2010
CHART AT KICDO TERMINUS: BZN LDG RWY 12

FLIGHT INSPECTED BY:

WENDI S GIMA

ORGANIZATION:

AJF

DATE:

09/17/2025

Flight Inspected Signature:

Digitally signed by

CASIMIR L TABAKA

Sep 19, 2025

Digitally signed by

PARNELL R PRASSADA

Jul 24, 2025

DEVELOPED BY:

PARNELL PRASSADA

AJV-A431

06/24/2025

Developed By Signature:

Digitally signed by

CASIMIR L TABAKA

Sep 19, 2025

APPROVED BY:

CASEY HILL

AJV-A412

Approved By Signature:

CHANGES:

1. REMOVED FM LEG FROM THE PROCEDURE.
2. ARRIVAL ROUTE DESCRIPTION: ADDED "LANDING RWY 12."
3. ARRIVAL ROUTE DESCRIPTION: DELETED CEDEX AND REPLACED IT WITH KICDO.
4. ARRIVAL ROUTE DESCRIPTION: CHANGED TRACK/DISTANCE FOLLOWING RUFSS FROM 261.42/7.53 TO 254.21/7.14.
5. ARRIVAL ROUTE DESCRIPTION: MODIFIED STAR TERMINATING VERBIAGE IN ARRIVAL ROUTE DESCRIPTION FROM "CROSS CEDEX AT OR ABOVE 10000 AND AT 220 KIAS, THEN ON TRACK 303.00. EXPECT RADAR VECTORS TO FINAL APPROACH COURSE" TO "CROSS KICDO AT OR ABOVE 10000 AND AT 220 KIAS. EXPECT ASSIGNED APPROACH OR RADAR VECTORS TO FINAL APPROACH COURSE."
6. PROCEDURAL DATA NOTES: DELETED "NOTE: THIS STAR SERVES KBZN RWY 12."
7. COMMUNICATIONS: DELETED "BIG SKY APP CON."
8. COMMUNICATIONS: UPDATED FROM "BIG SKY TWR" TO "BOZEMAN TWR."
9. AIRPORTS SERVED/ADDITIONAL FLIGHT DATA: REMOVED AIRPORT K IDENTIFIERS FROM 8260-17.1 FORM.
10. ADDITIONAL FLIGHT DATA: DELETED "CHART AT CEDEX TERMINUS: LDG BZN."
11. ADDITIONAL FLIGHT DATA: ADDED "CHART AT KICDO TERMINUS: BZN LDG RWY 12."

REASONS:

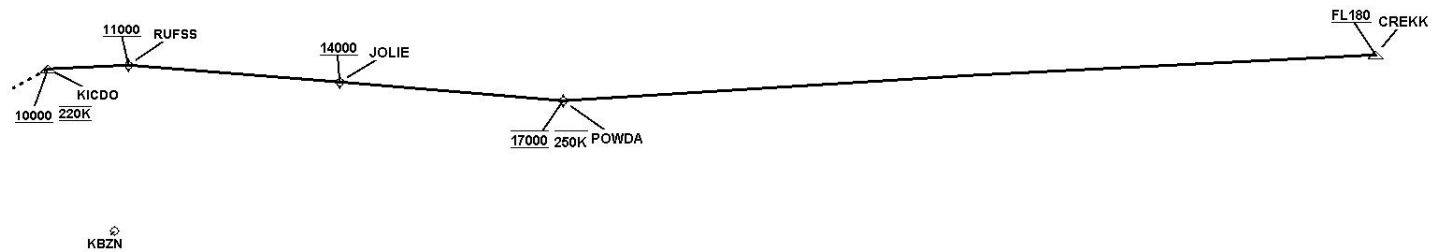
- 1, 3, 5. PER ATC REQUEST FOR TRAFFIC FLOW MANAGEMENT.
2. IAW 8260.19J, 4-5-12 (C) (2).
4. DUE TO NEW TERMINUS POINT LOCATION.
6. CHARTED KICDO TERMINUS RENDERED THIS CHART NOTE UNNECESSARY.
- 7, 8. IAW 8260.19J, 4-5-12 (F).
9. IAW FAAO 8260.19J DOCUMENTATION STANDARDS.
- 10, 11. IAW 8260.19J, 4-5-2 (H) (2).

QUALITY
14
CHECKED

FEDERAL AVIATION ADMINISTRATION
FLIGHT STANDARDS SERVICE
STANDARD TERMINAL ARRIVAL (STAR)

Bearings, headings, courses, tracks and radials are magnetic. Elevations and altitudes are in feet, MSL. Altitudes are minimum altitudes unless otherwise indicated.
Ceilings are in feet above airport elevation. Distances are in nautical miles. Visibilities are in statute miles or feet RVR unless otherwise indicated.

Arrival Name	Number	STAR Computer Code	Superseded Number	Dated	Effective Date
POWDA (RNAV)	TWO	CREKK.POWDA2	ONE	07/11/2024	
Graphic Depiction 1					



FEDERAL AVIATION ADMINISTRATION
FLIGHT STANDARDS SERVICE
STAR (DATA RECORD)

Arrival Name POWDA (RNAV)		Number TWO		STAR Computer Code CREKK.POWDA2			Superseded Number ONE		Dated 07/11/2024	Effective Date
<u>FIX/NAVAID</u>	<u>LAT/LONG</u>	<u>C</u>	<u>FO/FB</u>	<u>LEG TYPE</u>	<u>TC</u>	<u>DIST (NM)</u>	<u>ALTITUDE</u>	<u>SPEED</u>	<u>REMARKS</u>	
Common Route										
CREKK	460212.45N / 1082843.27W	Y		IF			AT/ABOVE FL180		CREKK.POWDA2	
POWDA	455805.67N / 1101159.81W	Y	FB	TF	267.35	72.11	AT 17000	AT/BELOW 250K		
JOLIE	455947.42N / 1104018.90W	Y	FB	TF	275.08	19.82	AT/ABOVE 14000			
RUFSS	460117.29N / 1110709.26W	Y	FB	TF	274.74	18.77	AT/ABOVE 11000			
KICDO	460056.00N / 1111723.41W	Y	FB	TF	267.21	07.14	AT/ABOVE 10000	AT 220K		

