

WAAS CH <b>48900</b> <b>W36A</b>	APP CRS <b>003°</b>	Rwy Ldg TDZE Apt Elev	<b>3001</b> <b>228</b> <b>228</b>
----------------------------------------	------------------------	-----------------------------	-----------------------------------------

# RNAV (GPS) RWY 36

FRANKLIN COUNTY STATE (F'SO)

RNP APCH - GPS.

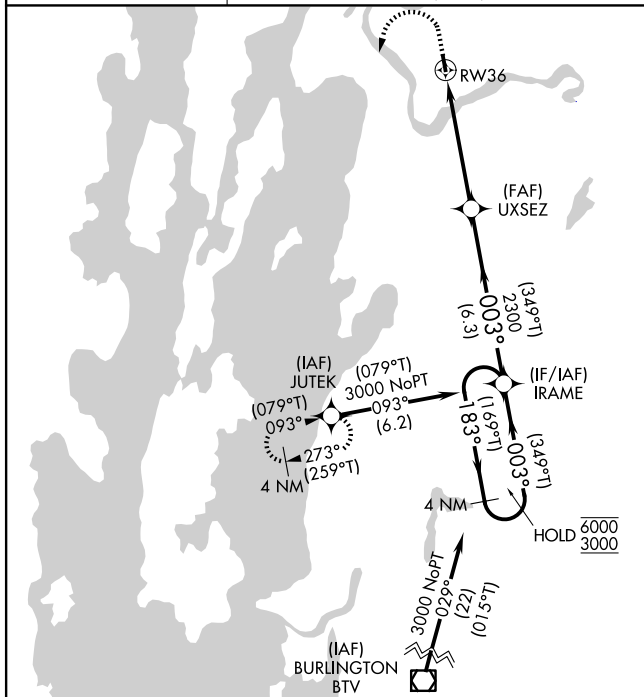
**▼** For uncompensated Baro-VNAV systems, LNAV/VNAV NA below -15°C or above 54°C. Rwy 36 helicopter visibility reduction below 1 SM NA. When local altimeter setting not received, use PBG altimeter setting and increase LPV DA to 635 feet and all visibilities 1/8 SM. Increase LNAV/VNAV DA to 984 feet; increase all MDAs 80 feet and LNAV visibility Cat B 1/4 SM, and Circling visibility Cat B 1/4 SM. Baro-VNAV NA when using PBG altimeter setting. Straight-in Rwy 36 NA at night, Circling Rwy 36 NA at night.

**MISSED APPROACH:** Climb to 1100, then climbing left turn to 3000 direct JUTEK and hold.

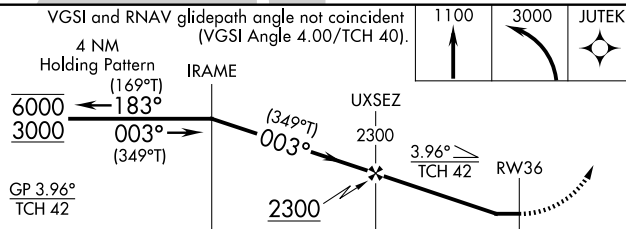
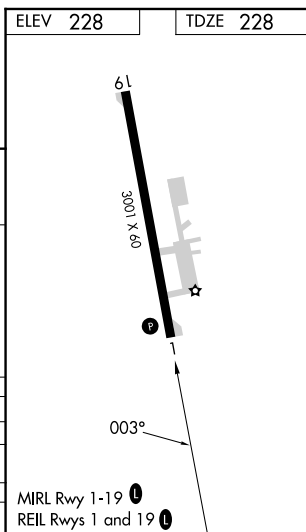
AWOS-3  
**119.025**

BURLINGTON APP CON★  
**121.1** (EAST) **278.8**  
(WEST) **360.8**

UNICOM  
**122.8** (CTAF) **0**



**PROTOTYPE-NOT FOR NAVIGATION**



CATEGORY	A	B	C	D
LPV DA	571-1	343 (400-1)		NA
LNAV/VNAV DA	920-2	692 (700-2)		NA
LNAV MDA	920-1	692 (700-1)		NA
CIRCLING	920-1 692 (700-1)	960-1 732 (800-1)		NA