

Flight Procedures Cover Page	Task Action: Cancellation	Task Type: IAP	Estimated Chart Date: 05/14/2026	APWS Task ID: 6716407F827B4D2EBC3B9396049A3A56	APWS Project ID: 55E3B89FE1CE4B0EA3941318C77763F8
Procedure: VOR-A AMDT 9B		Enroute: NO	Specialist: Smart, Phillip		Agreement Number:
Airport ID: KALN			Airport City: ALTON/ST LOUIS		State: IL
Facility ID:	Facility Type:	Flight Inspection Remark Type:			

**Procedure Comments:**  
CANCELLATION

Processed IAW Technical Support Group (AJF-17) Memo dated 07/07/2021 Guidance for Procedural Changes Requiring Flight Inspection/Validation.

CONTACT CASEY HILL (405) 954-0624. FEDERAL AVIATION ADMINISTRATION.



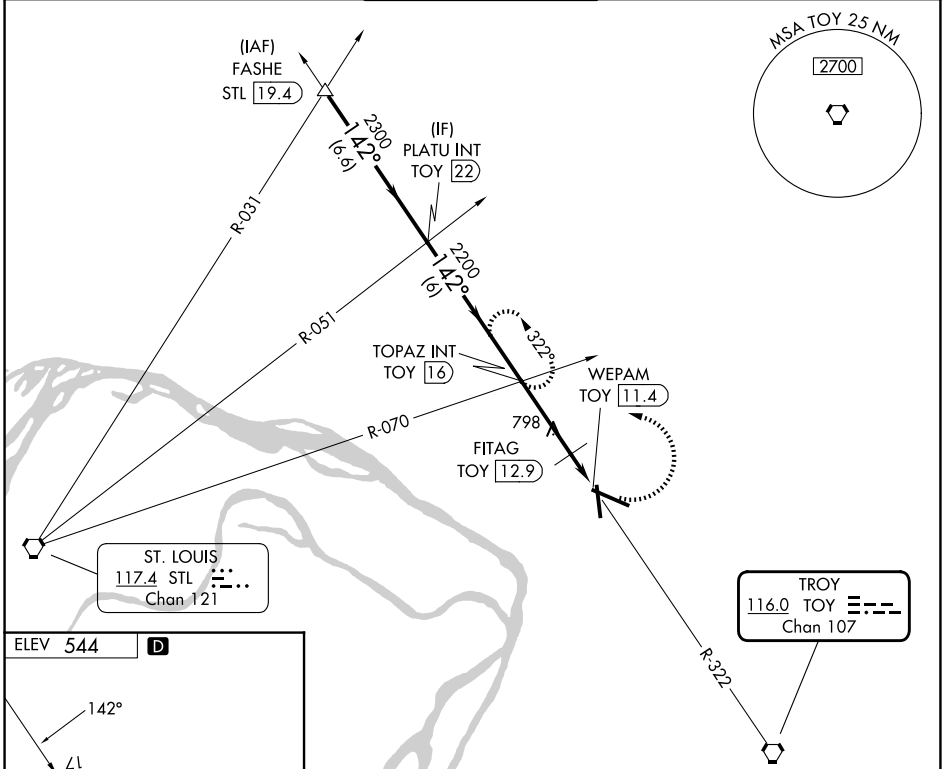
VORTAC TOY <b>116.0</b> Chan <b>107</b>	APP CRS <b>142°</b>	Rwy Ldg TDZE Apt Elev	<b>N/A</b> <b>N/A</b> <b>544</b>
-----------------------------------------------	------------------------	-----------------------------	----------------------------------------

**VOR-A**  
ST LOUIS RGNL (A.L.N)

**⚠** When local altimeter setting not received, use St Louis Lambert Intl altimeter setting and increase all MDA 60 feet and increase Circling Cat C/D visibility ¼ SM. When VGSi inop, Circling to Rwy 17/35 NA at night.

MISSED APPROACH: Climbing left turn to 2200 via TOY R-322 to TOPAZ INT/TOY 16 DME and hold.

ATIS <b>128.0</b>	ST LOUIS APP CON <b>124.2 353.9</b>	REGIONAL TOWER* <b>126.0</b> (CTAF) <b>239.0</b>	GND CON <b>120.2</b>	UNICOM <b>122.95</b>
----------------------	----------------------------------------	-----------------------------------------------------	-------------------------	-------------------------



ELEV 544 **D**

REIL Rwy 11 **Ⓛ**  
HIRL Rwy 11-29 **Ⓛ**  
MIRL Rwy 17-35 **Ⓛ**

FAF to MAP 4.6 NM

Knots	60	90	120	150	180
Min:Sec	4:36	3:04	2:18	1:50	1:32

	FASHE STL 19.4 2700	*1160 when using St Louis Lambert Intl altimeter setting.	2200	TOPAZ INT
	PLATU INT TOY 22	TOPAZ INT TOY 16	FITAG TOY 12.9	WEPAM TOY 11.4
Procedure Turn NA	2300	2200	*1100	
	6.6 NM	6 NM	3.2 NM	1.4 NM
CATEGORY	A	B	C	D
CIRCLING	1100-1	556 (600-1)	1160-1¾ 616 (700-1¾)	1200-2 656 (700-2)
	FITAG FIX MINIMUMS			
CIRCLING	1000-1	456 (500-1)	1160-1¾ 616 (700-1¾)	1200-2 656 (700-2)

EC-3, 30 OCT 2025 to 27 NOV 2025

EC-3, 30 OCT 2025 to 27 NOV 2025