

Flight Procedures Cover Page	Task Action: FLIGHT CHECK	Task Type: IAP	Estimated Chart Date: 05/14/2026	APWS Task ID: 671DB0933796400A9B6850F08E6EE52D	APWS Project ID: 266FF090B567400EBA8D310C2E5513D9
Procedure: RNAV (RNP) Y RWY 12 AMDT 1		Enroute: NO	Specialist: Dugan, Joshua		Agreement Number:
Airport ID: KMIA			Airport City: MIAMI	State: FL	
Facility ID:	Facility Type:	Flight Inspection Remark Type: New FC Slot			

Procedure Comments:  
LOA FOR MANDATORY ALTITUDE

ACTIVE DATA USED FOR KMIA

CONTACT RODERT HAMILTON 405-954-4608

03/26/2026: THIS IS AN UPDATED COPY OF THE FORM DEVELOPED ON 02/02/2026.

1. CHANGED HAVOC FROM AN "IF" TO AN "IAF".
2. CHANGED FENDR FROM AN "IF" STEPDOWN TO AN "IAF" STEPDOWN.
3. CHANGED GLRIA FROM AN "IF" TO A "IAF".
4. CHANGED PIANA FROM AN "IF" STEP DOWN TO AN "IF".
5. DELETED PROFILE NOTE: SEE PLANVIEW FOR MULTIPLE IF LOCATIONS



## FIPC BASIC FORM

<b>PROCEDURE:</b> RNAV (RNP) Y RWY 12 AMDT 1		<b>AIRPORT NAME:</b> MIAMI INTL		<b>AIRPORT ID:</b> KMIA	<b>SPECIAL CONTROL NO:</b> AG-02-123-26
<b>FAC ID:</b> KMIA12.01Y		<b>CITY:</b> MIAMI		<b>ST:</b> FL	<b>ORIG CHART DATE:</b> 05/14/2026
<b>DFL TYPE:</b> PROC/P	<b>THIRD PARTY:</b> <input type="checkbox"/> YES	<b>EST. TIME ON SITE:</b> 0.4	<b>REIMB. NUMBER:</b>	<b>PTS TASK ID:</b> 671DB0933796400A9B6850F08E6EE52D	

### PREFLIGHT NOTES

<b>REVIEWER:</b>	<b>DATE:</b>
<b>COMMENTS:</b>	<b>CHECK ONE:</b> <input type="checkbox"/> FLT CK REQ <input type="checkbox"/> NFCR <input type="checkbox"/> REJECT
	<b>YES</b> <b>NO</b>
	<b>CPV COMPLETE?</b> <input checked="" type="checkbox"/> X <input type="checkbox"/>

### PROCEDURE RESULTS

<b>INSPECTION DATE:</b> 03/25/2026	<b>CREW #:</b> VN588	<b>N #:</b> N67	<b>INSTRUMENT PROCEDURE STATUS:</b> <input checked="" type="checkbox"/> SAT <input type="checkbox"/> SAT W/CHANGES <input type="checkbox"/> UNSAT	<b>ARINC CODING:</b> <input checked="" type="checkbox"/> SAT <input type="checkbox"/> SAT/GOLD <input type="checkbox"/> UNSAT
<b>FLIGHT INSPECTOR SIGNATURE:</b> james r jones @ 03/25/2026 15:23		<b>PRINTED NAME:</b> JONES, JAMES ROBERT		<b>NOTAM INITIATED?</b> <input type="checkbox"/> YES <input checked="" type="checkbox"/> NO

**FLIGHT INSPECTOR REMARKS:**  
RNAV (RNP) Y RWY 12, Miami International, Miami, FL. SAT

### IN-FLIGHT OBSTACLE REPORT

<b>OBSTRUCTION ID #:</b>	<b>COORDINATES OR LOCATION:</b>	<b>GNSS ALTITUDE (MSL):</b>	<b>BAROMETRIC ALTITUDE (MSL):</b>	<b>HEIGHT ABOVE GROUND LEVEL:</b>
--------------------------	---------------------------------	-----------------------------	-----------------------------------	-----------------------------------



# Federal Aviation Administration

---

---

## Memorandum

Date: January 10, 2025

To: Christopher Hope, Manager, Flight Technologies and Procedures Division  
THRU: Romana Wolf, Manager, Flight Procedures and Airspace Group

From: Bev Bordy, Manager, Instrument Flight Procedures Coordination Team, AJV-A43

Prepared by: Erik J John, Sr. ATC Specialist, NAVTAC CTR Support

Subject: Letter of Approval Request for Miami, FL (MIA)  
RNAV (RNP) Y RWY 12

---

---

MIA RNAV (RNP) Y RWY 12: Intermediate Fix (IF) PIANA Mandatory Altitude.

Miami Air Traffic Control Tower (ATCT) requests AFS approval to chart a mandatory altitude restriction at the following IF: PIANA AT 3000ft MSL for RNAV (RNP) Y RWY 12 instrument approach procedure (IAP) for MIA.

Currently, **FAAO 8260.19 8-6-11 n. 1.** requires Flight Standards approval from the Flight Technologies and Procedures Division to chart a mandatory altitude on the intermediate segment of an instrument approach procedure.

This is an ATC operational request to ensure vertical separation between aircraft on the approach and other TRACON traffic. Additionally, it is required by **FAAO 8260.3 2-2-7 f. 1.** *An altitude restriction must be established at the termination fix of the STAR if the same fix is charted on an approach procedure. If the approach procedure fix has an altitude restriction associated with it, then the STAR termination altitude restriction must be identical to it. For example, if the approach procedure's fix is a mandatory altitude, then the STAR must end with an identical mandatory altitude. If the approach procedure's fix is a minimum altitude, then the STAR must end with an identical minimum altitude.*

The IF PIANA is also shared and connected with the amended FROGZ (RNAV) STAR that will feed directly into the RNAV (RNP) Y RWY 12 IAP at PIANA. The FROGZ STAR has a mandatory termination altitude at PIANA of AT 3000ft MSL. Miami ATCT wishes to retain the altitude restriction on the FROGZ STAR due to traffic and standard operating procedures within Miami TRACON and comply with STAR Termination criteria.

Therefore, Miami ATCT requests approval to chart the mandatory altitude restriction at IF PIANA on RNAV (RNP) Y RWY 12 IAP.

NEW

MIAMI, FLORIDA

AL-257 (FAA)

FIG

# RNAV (RNP) Y RWY 12

MIAMI INTL (MIA)

APP CRS	Rwy Ldg	<b>8579</b>
<b>124°</b>	TDZE	<b>9</b>
	Apt Elev	<b>9</b>

RNP AR APCH - GPS. Authorization required. From FENDR: RF.

MALSR

MISSED APPROACH: Climb to 500 then climbing left turn to 3000 direct ZOMGU and hold, continue climb-in-hold to 3000.

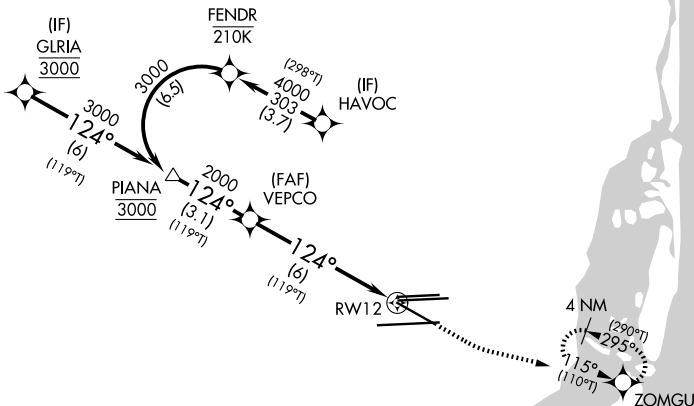
For uncompensated Baro-VNAV systems, procedure NA below 9°C or above 54°C.



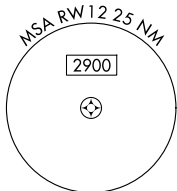
MIAMI APP CON  
**124.85 322.3**

MIAMI TOWER  
**118.3 256.9**

GND CON  
**121.8 (8L/8R/12/26L/26R) 348.6**  
**127.5 (9/27/30)**



## PROTOTYPE- NOT FOR NAVIGATION

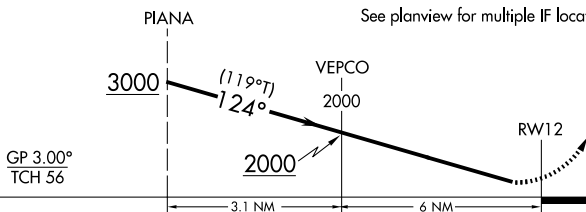


ELEV	<b>9</b>	<b>D</b>	TDZE	<b>9</b>
------	----------	----------	------	----------

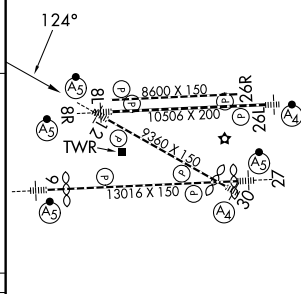
VGSI and RNAV glidepath not coincident (VGSI Angle 3.00/TCH 72).



See planview for multiple IF locations.



GP 3.00°  
TCH 56



CATEGORY	A	B	C	D
RNP 0.30 DA	462/50		453 (500-1)	

### AUTHORIZATION REQUIRED

TDZL/RCLS Rwy 8R  
REIL Rwy 8L and 26R  
HIRL all rwy

OLD

MIAMI, FLORIDA

AL-257 (FAA)

25331

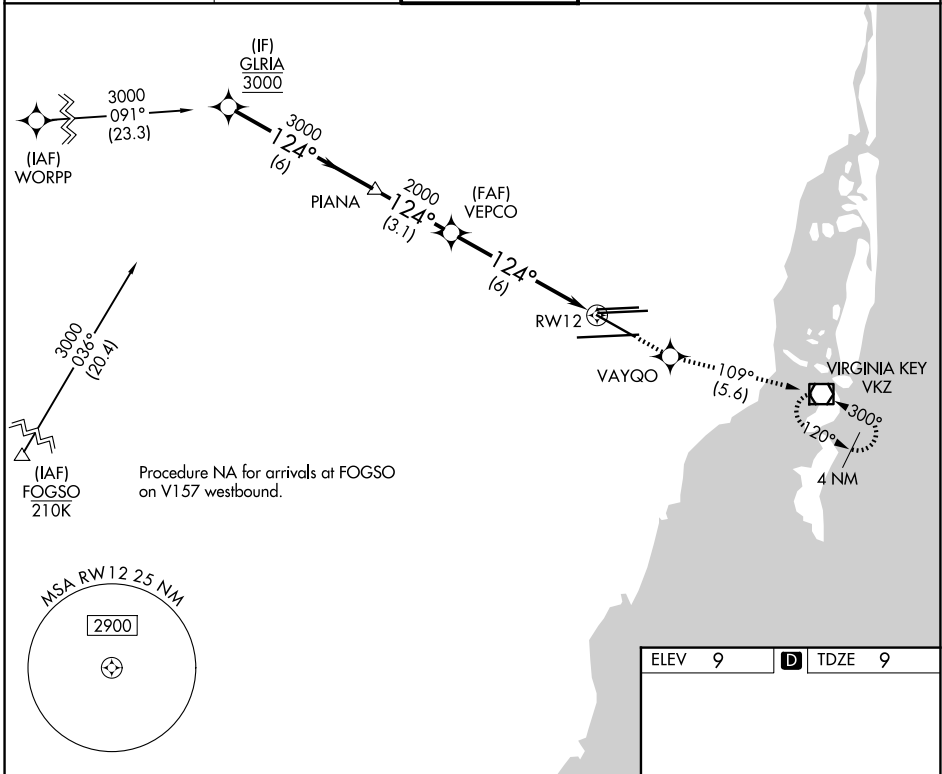
APP CRS	Rwy Ldg	<b>8579</b>
<b>124°</b>	TDZE	<b>9</b>
	Apt Elev	<b>9</b>

# RNAV (RNP) Y RWY 12

MIAMI INTL (MIA)

RNP AR APCH - GPS. Authorization required.	MALSR	MISSED APPROACH: Climb to 3000 direct VAYQO and on track 109° to VKZ VOR/DME and hold, continue climb-in-hold to 3000.
▼ For uncompensated Baro-VNAV systems, procedure NA below 9°C or above 54°C.		

D-ATIS <b>119.15</b>	MIAMI APP CON <b>124.85 322.3</b>	MIAMI TOWER <b>118.3 256.9</b>	GND CON <b>121.8</b> (8L/8R/12/26L/26R) <b>348.6</b> <b>127.5</b> (9/27/30)
-------------------------	--------------------------------------	-----------------------------------	---



SE-3, 27 NOV 2025 to 25 DEC 2025

SE-3, 27 NOV 2025 to 25 DEC 2025

ELEV 9		D TDZE 9	
VGSi and RNAV glidepath not coincident (VGSi Angle 3.00/TCH 72).			
3000	VAYQO	tr	VKZ
GLRIA	PIANA	VEPCO	RW12
3000	3000	2000	
GP 3.00° TCH 56			
6 NM		3.1 NM	
A		B	
C		D	
CATEGORY	A	B	C
RNP 0.30 DA	462/50		453 (500-1)
<b>AUTHORIZATION REQUIRED</b>			
TDZ/Cl Rwy 8R REIL Rwys 8L and 26R HIRL all Rwys			

MIAMI, FLORIDA  
Orig-D 27NOV25

25°48'N-80°17'W

# MIAMI INTL (MIA)

## RNAV (RNP) Y RWY 12