

Flight Procedures Cover Page	Task Action: FLIGHT CHECK	Task Type: IAP	Estimated Chart Date: 03/19/2026	APWS Task ID: 68FFD3B9A97740F3B27A366EC00B8ED9	APWS Project ID: 9A58FDF2618A4797951C94E7C64D1B43
Procedure: RNAV (GPS) RWY 21 AMDT 3A		Enroute: NO	Specialist: Secaida, Roni		Agreement Number:
Airport ID: KSJS			Airport City: PRESTONSBURG		State: KY
Facility ID:	Facility Type:	Flight Inspection Remark Type: New FC Slot			

**Procedure Comments:**

PROJECT REASON: Remove notes for Straight-in and Circling Rwy 3 NA at night. 20:1 penetrating obstacles have been removed.

Contact Casey Hill, (405) 954-0624



## FIPC BASIC FORM

<b>PROCEDURE:</b> RNAV (GPS) RWY 21 AMDT 3A		<b>AIRPORT NAME:</b> BIG SANDY RGNL		<b>AIRPORT ID:</b> KSJS	<b>SPECIAL CONTROL NO:</b> AG-11-082-25
<b>FAC ID:</b> KSJS21.03		<b>CITY:</b> PRESTONSBURG		<b>ST:</b> KY	<b>ORIG CHART DATE:</b> 03/19/2026
<b>DFL TYPE:</b> PROC/S	<b>THIRD PARTY:</b> <input type="checkbox"/> YES	<b>EST. TIME ON SITE:</b> 0.4	<b>REIMB. NUMBER:</b>	<b>PTS TASK ID:</b> 68FFD3B9A97740F3B27A366EC00B8ED9	

## PREFLIGHT NOTES

<b>REVIEWER:</b>	<b>DATE:</b>
<b>COMMENTS:</b>	<b>CHECK ONE:</b> <input type="checkbox"/> FLT CK REQ <input type="checkbox"/> NFCR <input type="checkbox"/> REJECT
	<b>YES</b> <b>NO</b>
	<b>CPV COMPLETE?</b> <input checked="" type="checkbox"/> X <input type="checkbox"/>

## PROCEDURE RESULTS

<b>INSPECTION DATE:</b> 12/16/2025	<b>CREW #:</b> VN532	<b>N #:</b> N83	<b>INSTRUMENT PROCEDURE STATUS:</b> <input checked="" type="checkbox"/> SAT <input type="checkbox"/> SAT W/CHANGES <input type="checkbox"/> UNSAT	<b>ARINC CODING:</b> <input checked="" type="checkbox"/> SAT <input type="checkbox"/> SAT/GOLD <input type="checkbox"/> UNSAT
<b>FLIGHT INSPECTOR SIGNATURE:</b> ryan caramanica @ 12/16/2025 14:34		<b>PRINTED NAME:</b> CARAMANICA, RYAN DANIEL		<b>NOTAM INITIATED?</b> <input checked="" type="checkbox"/> YES <input type="checkbox"/> NO

<b>FLIGHT INSPECTOR REMARKS:</b> Sat
---

## IN-FLIGHT OBSTACLE REPORT

<b>OBSTRUCTION ID #:</b>	<b>COORDINATES OR LOCATION:</b>	<b>GNSS ALTITUDE (MSL):</b>	<b>BAROMETRIC ALTITUDE (MSL):</b>	<b>HEIGHT ABOVE GROUND LEVEL:</b>
--------------------------	---------------------------------	-----------------------------	-----------------------------------	-----------------------------------

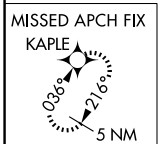
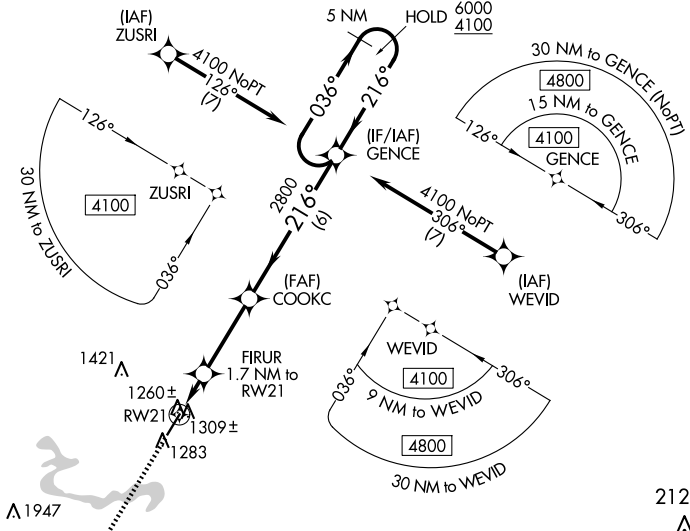
WAAS CH <b>77801</b> <b>W21A</b>	APP CRS <b>216°</b>	Rwy Ldg TDZE <b>1222</b> Apt Elev <b>1222</b>	<b>5002</b>
--	------------------------	---	-------------

# RNAV (GPS) RWY 21

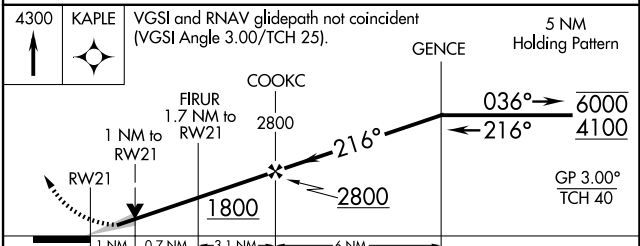
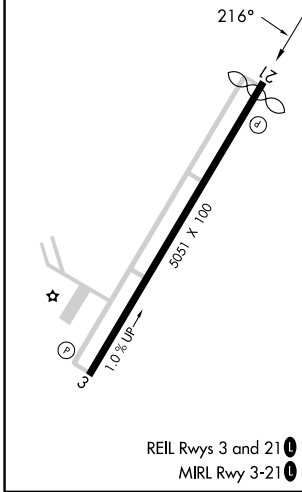
BIG SANDY RGNL (SJS)

RNP APCH - GPS.		MISSED APPROACH: Climb to 4300 direct KAPLE and hold.
AWOS-3 <b>120.175</b>	HUNTINGTON APP CON <b>119.75 270.1</b>	UNICOM <b>123.05 (CTAF)</b>

**OLD**



ELEV 1222	TDZE 1222
-----------	-----------



CATEGORY	A	B	C	D
LPV DA		1472- <sup>3</sup> / <sub>4</sub>	250 (300- <sup>3</sup> / <sub>4</sub> )	
LNAV/VNAV DA		1520- <sup>7</sup> / <sub>8</sub>	298 (300- <sup>7</sup> / <sub>8</sub> )	
LNAV MDA		1560-1	338 (400-1)	
<b>C</b> CIRCLING	1740-1	518 (600-1)	1920-2 698 (700-2)	2020-2 <sup>1</sup> / <sub>2</sub> 798 (800-2 <sup>1</sup> / <sub>2</sub> )

SE-1, 07 AUG 2025 to 04 SEP 2025

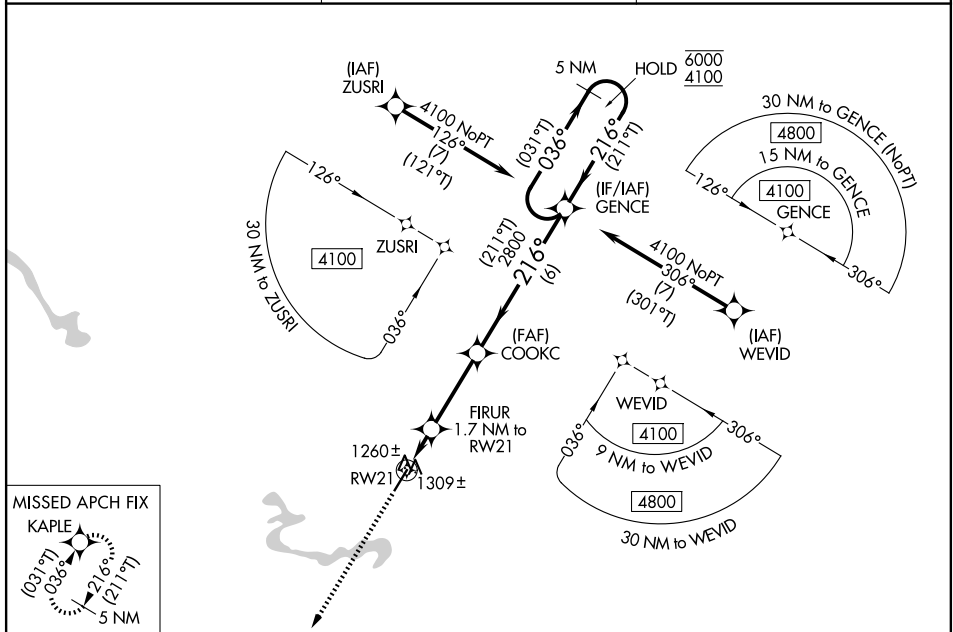
SE-1, 07 AUG 2025 to 04 SEP 2025

WAAS CH <b>77801</b> <b>W21A</b>	APP CRS <b>216°</b>	Rwy Ldg TDZE Apt Elev	<b>5002</b> <b>1222</b> <b>1222</b>
--	------------------------	-----------------------------	---

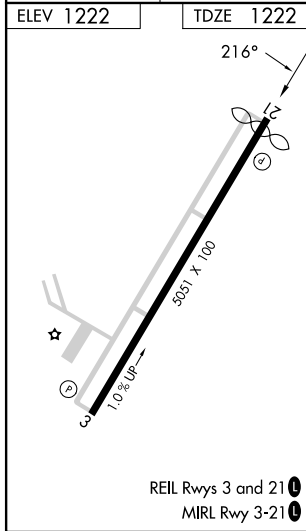
# RNAV (GPS) RWY 21

BIG SANDY RGNL (SJS)

RNP APCH - GPS.		MISSED APPROACH: Climb to 4300 direct KAPLE and hold.
AWOS-3 <b>120.175</b>	HUNTINGTON APP CON <b>119.75 270.1</b>	UNICOM <b>123.05 (CTAF) 0</b>

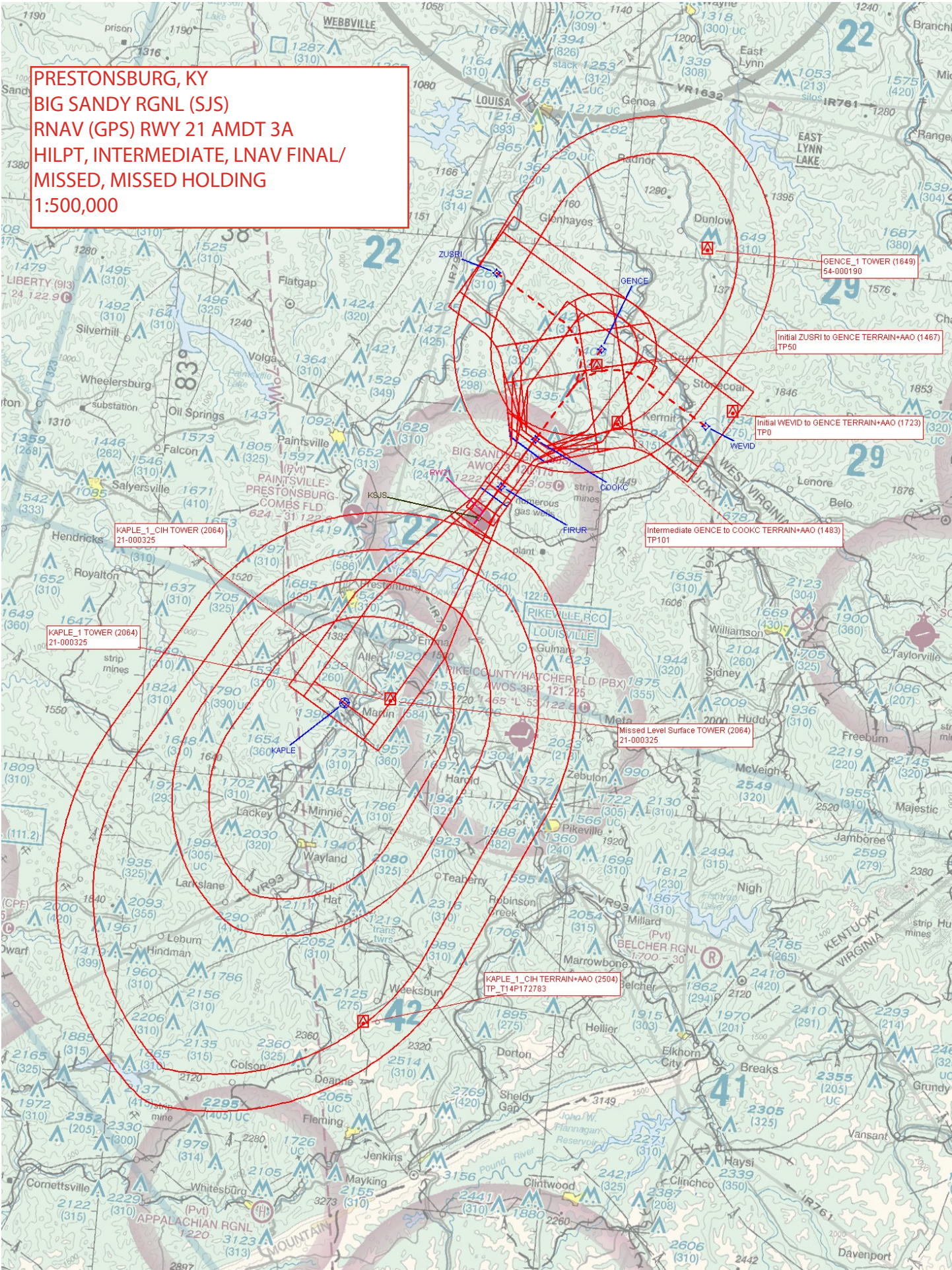


PROTOTYPE-NOT FOR NAVIGATION



 4300 KAPLE VGSI and RNAV glidepath not coincident (VGSI Angle 3.00/TCH 25). 5 NM GENCE Holding Pattern	RWY 21 1.0% UP			
	COOKC 2800 FIRUR 1.7 NM to RWY 21 1 NM to RWY 21 0.7 NM 3.1 NM 6 NM GENCE (031°T) 036° → 6000 ← 216° (211°T) 4100 GP 3.00° TCH 40			
CATEGORY	A	B	C	D
LPV DA		1472-3/4	250 (300-3/4)	
LNAV/VNAV DA		1520-7/8	298 (300-7/8)	
LNAV MDA		1560-1	338 (400-1)	
CIRCLING	1740-1	518 (600-1)	1920-2 698 (700-2)	2020-2 1/2 798 (800-2 1/2)

**PRESTONSBURG, KY**  
**BIG SANDY RGNL (SJS)**  
**RNAV (GPS) RWY 21 AMDT 3A**  
**HILPT, INTERMEDIATE, LNAV FINAL/**  
**MISSED, MISSED HOLDING**  
**1:500,000**



KAPLE\_1 CIH TOWER (2064)  
21-000325

KAPLE\_1 TOWER (2064)  
21-000325

MISSED LEVEL SURFACE TOWER (2064)  
21-000325

KAPLE\_1 CIH TERRAIN+AAO (2504)  
TP\_T14P172783

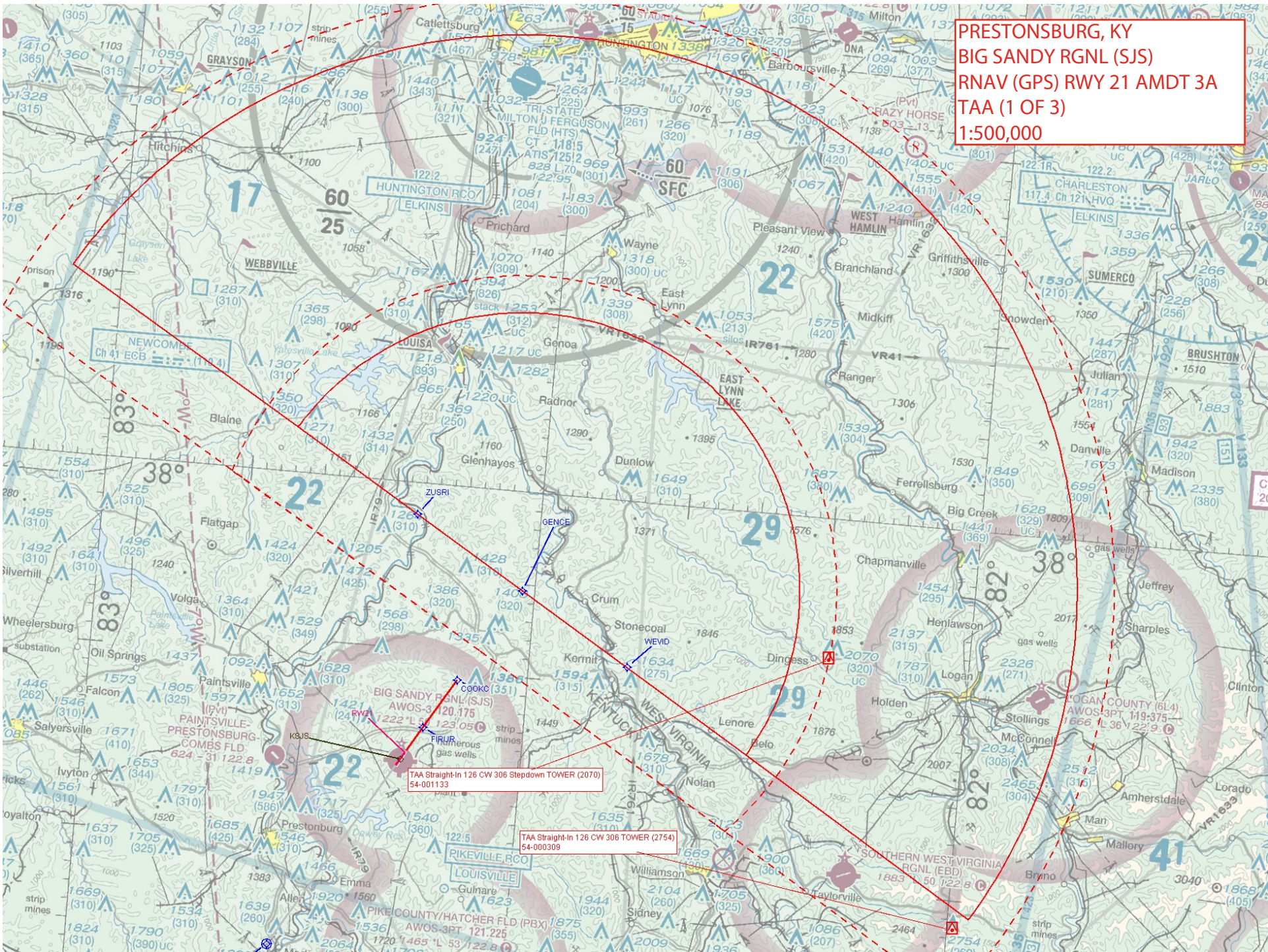
GENCE\_1 TOWER (1649)  
54-000190

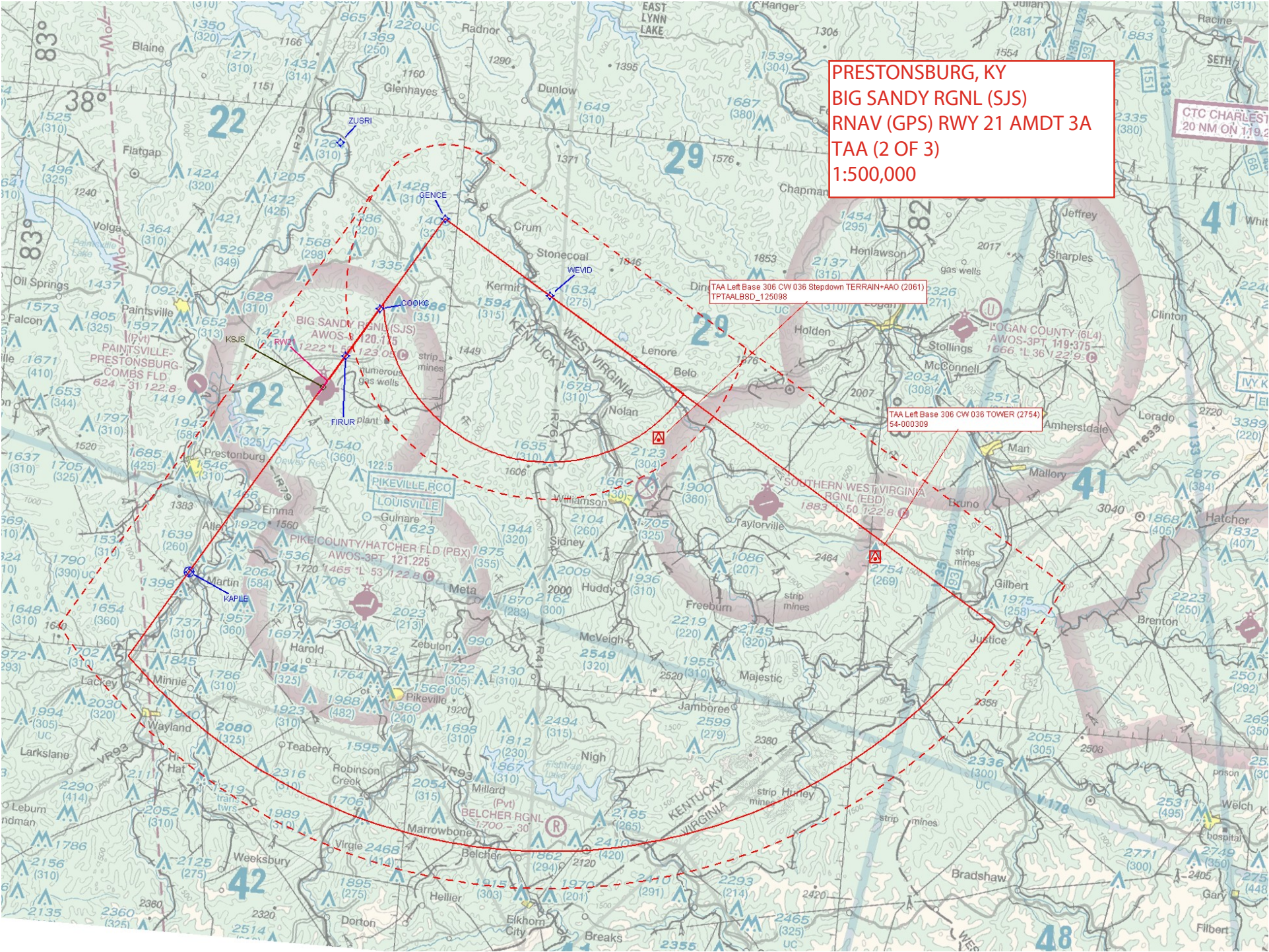
Initial ZUSRI to GENCE TERRAIN+AAO (1467)  
TP50

Initial WEVID to GENCE TERRAIN+AAO (1723)  
TP0

Intermediate GENCE to COOKK TERRAIN+AAO (1483)  
TP101

PRESTONSBURG, KY  
BIG SANDY RGNL (SJS)  
RNAV (GPS) RWY 21 AMDT 3A  
TAA (1 OF 3)  
1:500,000





**PRESTONSBURG, KY**  
**BIG SANDY RGNL (SJS)**  
**RNAV (GPS) RWY 21 AMDT 3A**  
**TAA (2 OF 3)**  
**1:500,000**

CTC CHARLEST  
20 NM ON 119.2

TAA Left Base 306 CW 036 Stepped TERRAIN-AAO (2061)  
TPTAALBSD\_125098

TAA Left Base 306 CW 036 TOWER (2754)  
54-000309

BIG SANDY RGNL (SJS)  
AWOS-1 120.115  
122.2 L 53 122.8  
strip mines  
numerous gas wells

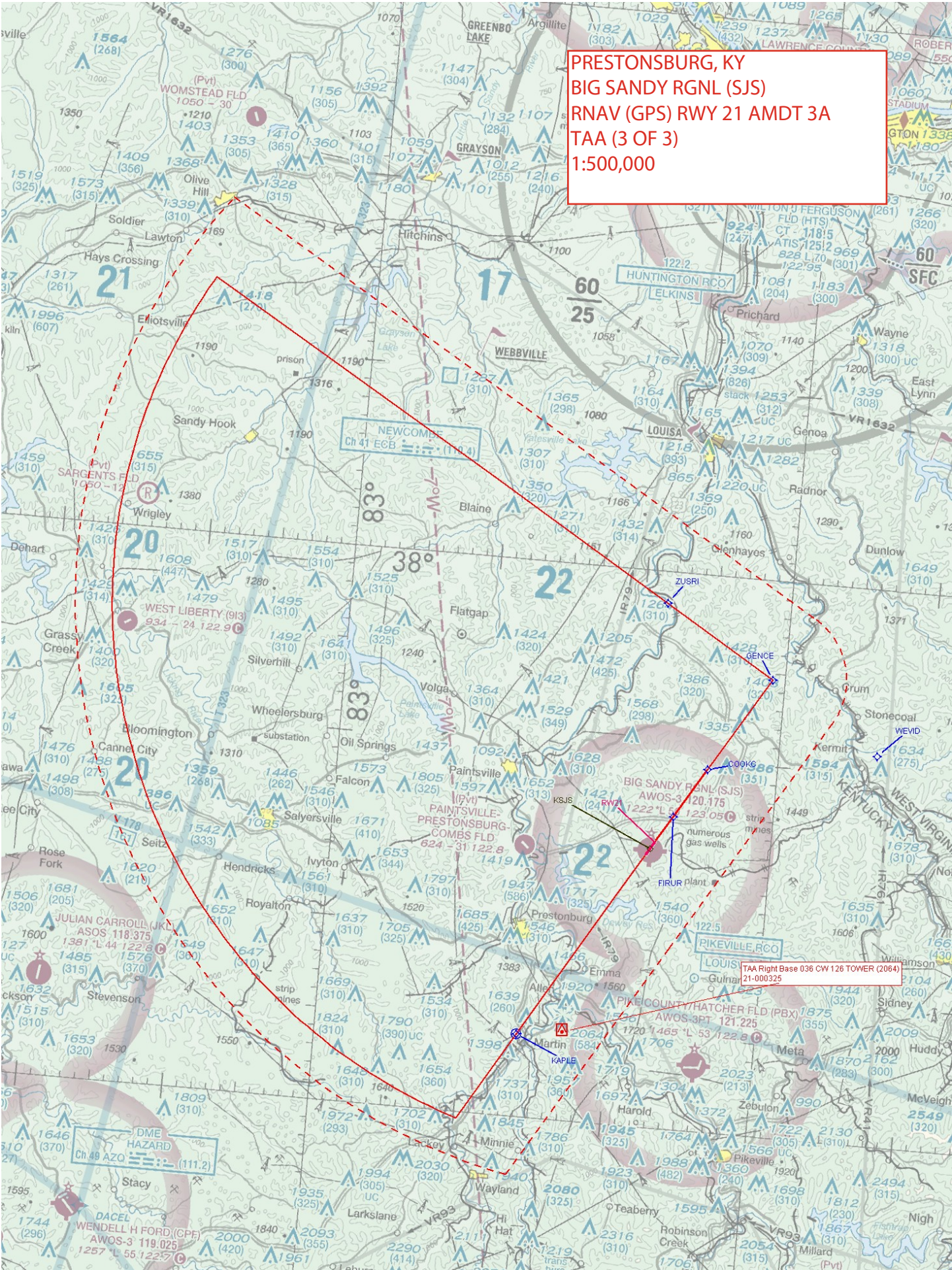
PIKEVILLE, KY  
LOUISVILLE

PIKE COUNTY/HATCHER FLD (PBX)  
AWOS-3PT 121.225  
1720 1465 L 53 122.8

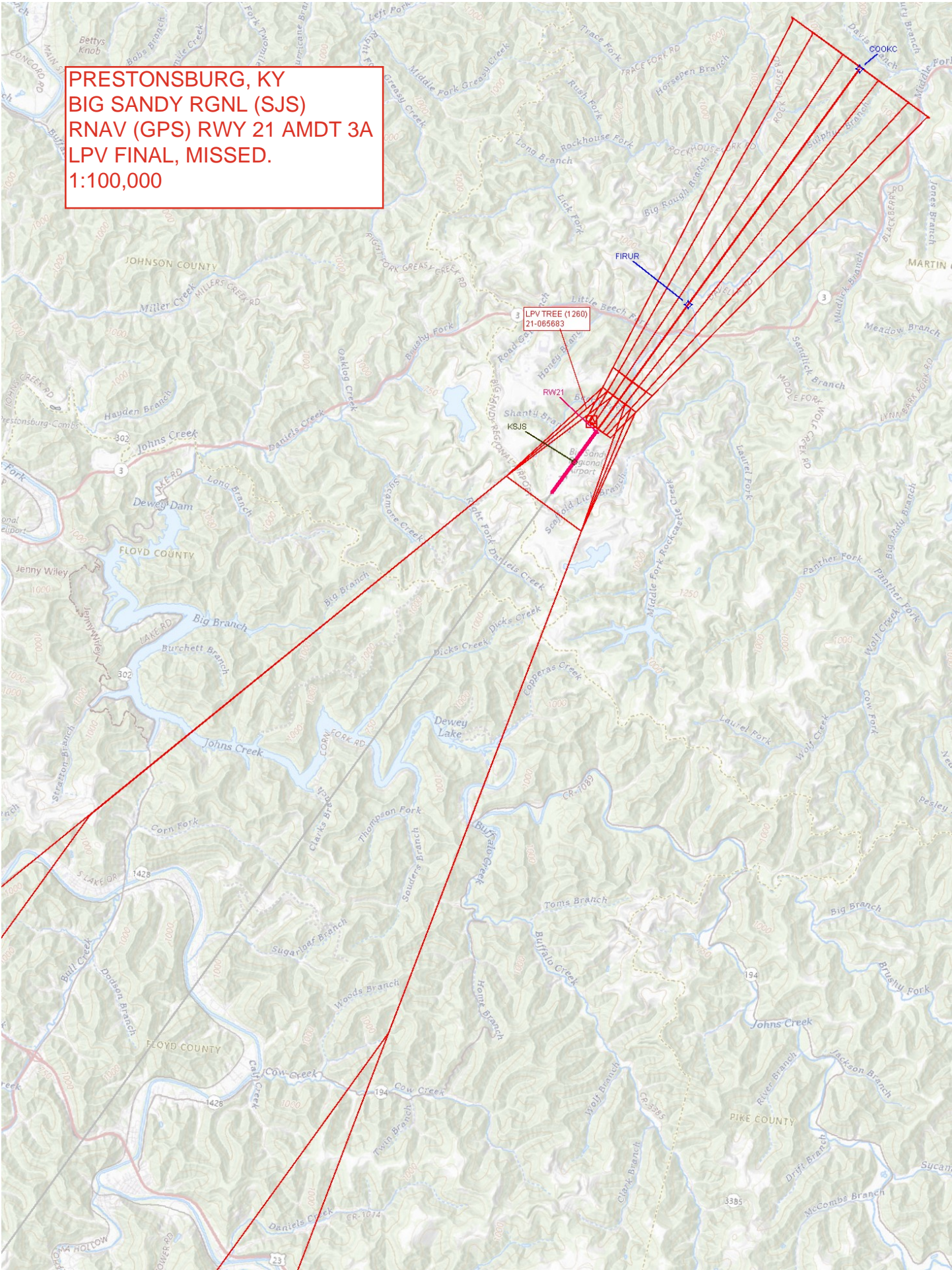
SOUTHERN WEST VIRGINIA  
RGNL (EBD)  
1883 50 122.8

BELCHER RGNL  
1700 - 30

**PRESTONSBURG, KY**  
**BIG SANDY RGNL (SJS)**  
**RNAV (GPS) RWY 21 AMDT 3A**  
**TAA (3 OF 3)**  
**1:500,000**



**PRESTONSBURG, KY**  
**BIG SANDY RGNL (SJS)**  
**RNAV (GPS) RWY 21 AMDT 3A**  
**LPV FINAL, MISSED.**  
**1:100,000**



**PRESTONSBURG, KY  
BIG SANDY RGNL (SJS)  
RNAV (GPS) RWY 21 AMDT 3A  
LNAV/VNAV FINAL, MISSED.  
1:100,000**



**PRESTONSBURG, KY**  
**BIG SANDY RGNL (SJS)**  
**RNAV (GPS) RWY 21 AMDT 3A**  
**RNAV FINAL, MISSED, CIRCLING.**  
**1:100,000**

RNAV COOKC TO FIRUR TERRAIN+AAO (1434)  
TP147

RNAV FIRUR TO KSJS:RW21:AER TREE (1309)  
21-065767

Circling CAT C TREE (1619)  
21-024004

Circling CAT D AAO (1719)  
AAO

Circling CAT A/B TERRAIN (1421)  
21-066058

