

Flight Procedures Cover Page	Task Action: Abbreviated Amendment	Task Type: IAP	Estimated Chart Date: 03/21/2024	APWS Task ID: 69700CDAE9844ED2826BF0F541EBB66C	APWS Project ID: 6AED6E0F35024F5689C5223605CCE675
Procedure: RNAV (GPS) RWY 9 AMDT 0D		Enroute: NO	Specialist: Hirst, Charles		Agreement Number:
Airport ID: H35			Airport City: CLARKSVILLE		State: AR
Facility ID:	Facility Type:	Flight Inspection Remark Type:			

**Procedure Comments:**

Delete DRANO segment without replacement per ATC, V534 being canceled.  
 CANCELS FDC NOTAM 3/1485  
 For additional information contact Eric Suski, Lead AJV-A431 405-954-7331  
 PROCESSED IAW TECHNICAL SUPPORT GROUP (AJF-17) MEMO DATED 07/07/2021 GUIDANCE  
 FOR PROCEDURAL CHANGES REQUIRING FLIGHT INSPECTION/VALIDATION

*Digitally signed by*  
**ERIC N SUSKI**  
 Feb 08, 2024

QUALITY  
41  
CHECKED

QUALITY  
13  
CHECKED

# ACTIVE PROCEDURE

CLARKSVILLE, ARKANSAS

AL-6402 (FAA)

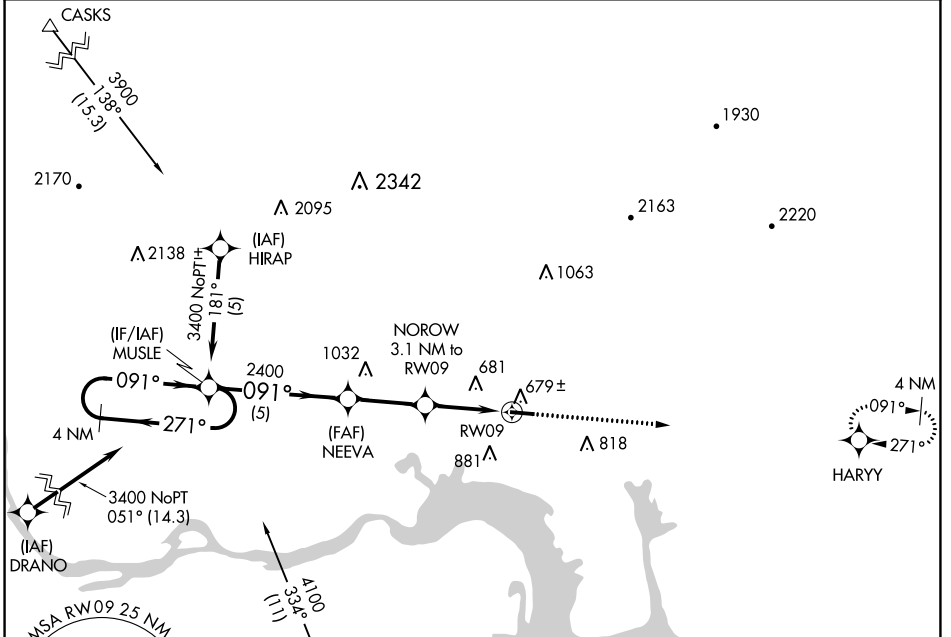
21280

APP CRS	Rwy Idg	<b>4504</b>
<b>091°</b>	TDZE	<b>451</b>
	Apt Elev	<b>481</b>

**RNAV (GPS) RWY 9**  
CLARKSVILLE MUNI (H35)

RNP APCH.	MISSED APPROACH: Climb to 3100 direct HARRY WP and hold.
<p>▼ Use Russellville Rgnl altimeter setting; If not received, use Fort Smith Rgnl altimeter setting and increase all MDAs 60 feet. Procedure NA at night.</p> <p>▲ NA Rwy 9 helicopter visibility reduction below 1 SM NA.</p>	

MEMPHIS CENTER <b>128.475 377.15</b>	UNICOM <b>122.8 (CTAF)</b>
-----------------------------------------	-------------------------------



ELEV	481	TDZE	451
------	-----	------	-----



Visual Segment - Obstacles.	3100	HARRY
4 NM Holding Pattern	MUSLE	
3400	271°	091°
091°	091°	091°
	NEEVA	NOROW
	2400	3.1 NM to RW09
	1500	RW09
	5 NM	2.8 NM
		3.1 NM

CATEGORY	A	B	C	D
LNAV MDA	1060-1 609 (600-1)			
CIRCLING	1220-1 739 (800-1)	1240-1¼ 759 (800-1¼)	NA	

CLARKSVILLE, ARKANSAS  
Orig-C 25FB21

CLARKSVILLE MUNI (H35)  
**RNAV (GPS) RWY 9**

35°28'N-93°26'W

SC-1, 10 AUG 2023 to 07 SEP 2023

SC-1, 10 AUG 2023 to 07 SEP 2023