

WAAS CH 65809 W01A	APP CRS 009°	Rwy Idg 5000 TDZE 588 APT Elev 588
--------------------------	------------------------	---

RNAV (GPS) RWY 1

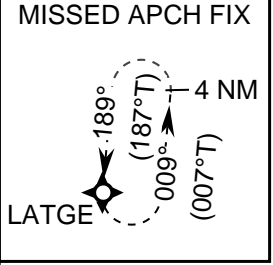
LEBANON MUNI (KM54)

RNP APCH - GPS.

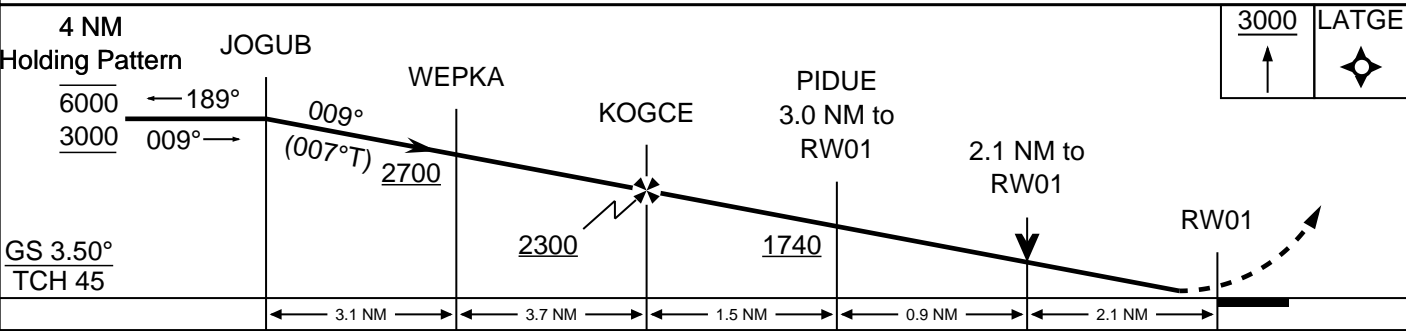
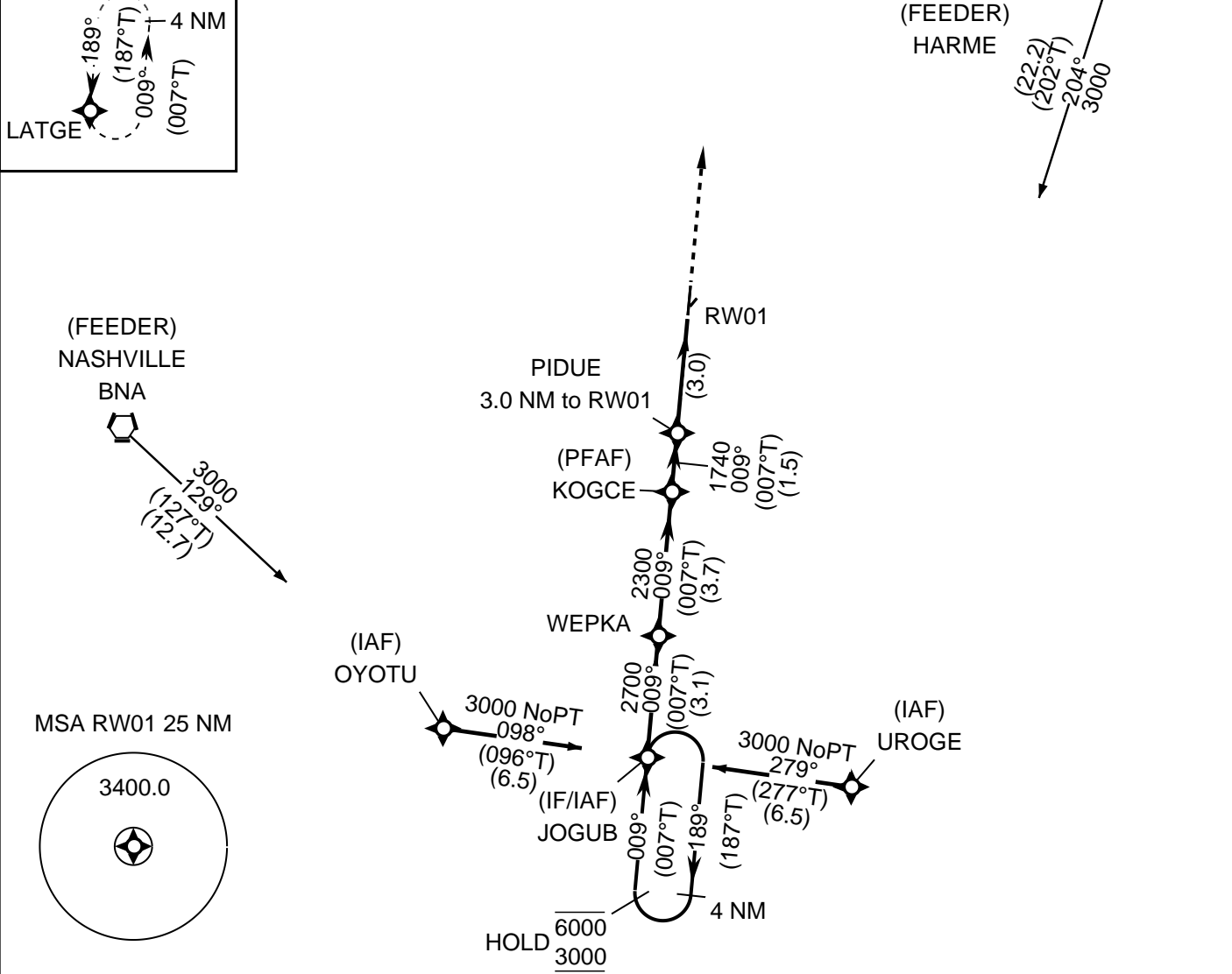
▼
▲ For uncompensated Baro-VNAV systems, LNAV/VNAV NA below -16° C or above 54° C. Baro-VNAV and VDP NA when using XNX altimeter setting. Rwy 1 helicopter visibility reduction below 3/4 SM NA. Circling NA to Rwys 4 and 22. When local altimeter setting not received, use XNX altimeter setting: increase LPV DA to 934 feet and all visibilities 1/8 SM; increase LNAV/VNAV DA to 1433 feet; increase all MDAs 40 feet and Circling Cat C visibility 1/4 SM.

MISSED APPROACH: Climb to 3000 direct LATGE and hold.

AWOS-3 118.325	NASHVILLE APP CON 118.4 360.7	UNICOM 122.725 (CTAF)
--------------------------	---	---------------------------------



PROTOTYPE-NOT FOR NAVIGATION



CATEGORY	A	B	C	D
LPV	901- 1 318			
LNAV/VNAV	1400- 2 1/2 817			
LNAV	1400-1 817	1400-1 1/4 817	1400-2 1/2 817	
CIRCLING	1400-1 1/4 812		1440-2 1/2 852	1520-3 932