

WAAS CH 87014 W32A
 APP CRS 321°
 Rwy ldg 6007
 TDZE 64
 APT Elev 64

RNAV (GPS) RWY 32

YUBA COUNTY (KMYV)

RNP APCH - GPS.

FOR UNCOMPENSATED BARO-VNAV SYSTEMS, PROCEDURE NA BELOW -15°C OR ABOVE 54°C. CIRCLING TO RWY 05, 23 NA AT NIGHT. BARO-VNAV NA WHEN USING LHM ALTIMETER SETTING. WHEN LOCAL ALTIMETER SETTING NOT RECEIVED, USE LHM ALTIMETER SETTING AND INCREASE LPV DA TO 357 FEET; INCREASE LNAV/VNAV DA TO 418 FEET; INCREASE ALL MDAS 60 FEET AND LNAV VISIBILITY CAT C/D 1/8 SM.

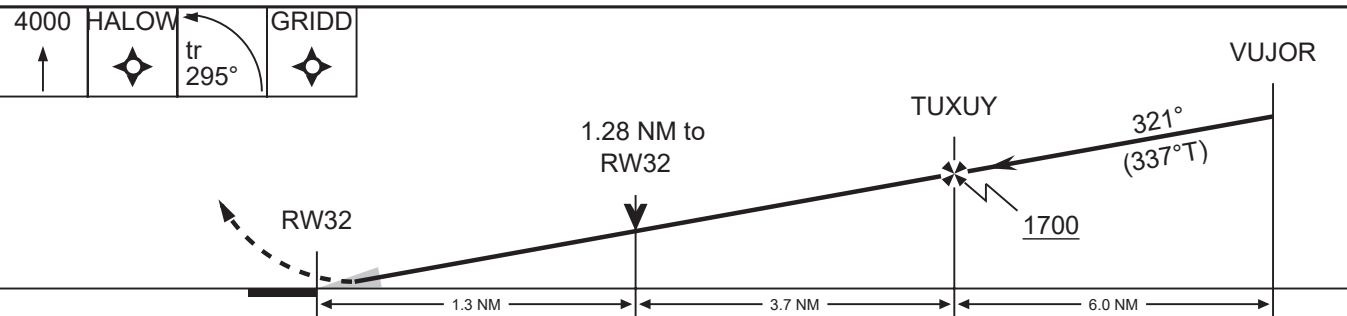
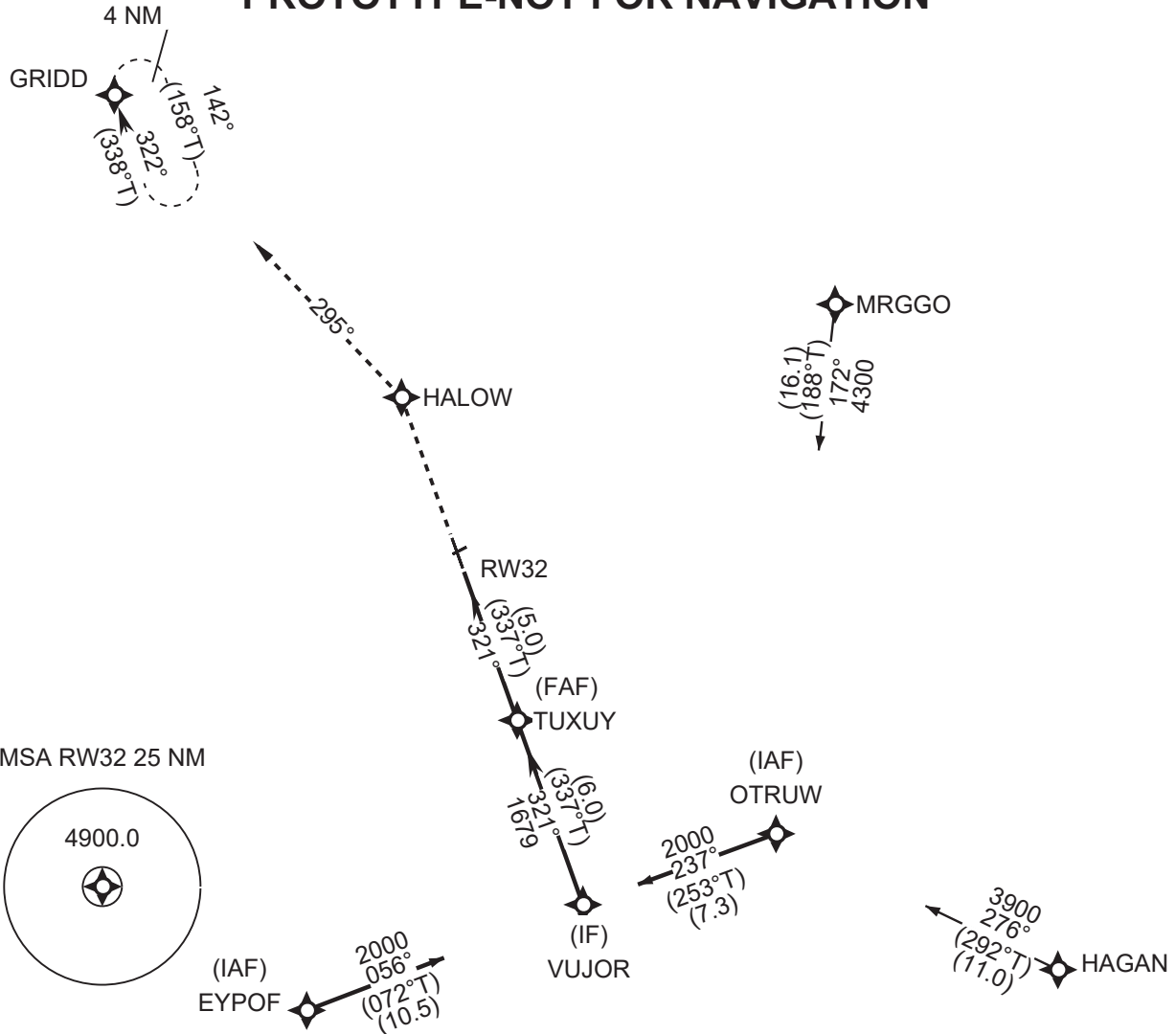
MISSED APPROACH: CLIMB TO 4000 DIRECT HALOW AND ON TRACK 295.43 TO GRIDD AND HOLD.

ASOS
 1128.475

NORCAL APP CON
 125.4 259.1

UNICOM
 123.05 (CTAF)

PROTOTYPE-NOT FOR NAVIGATION



CATEGORY	A	B	C	D
LPV	314-1 250 (300-7/8)			
LNAV/VNAV	375-1 311 (400-1 1/8)			
LNAV	540-1 476 (500-1)		540-1 1/4 476 (500-1 1/8)	
CIRCLING	540-1 476 (500-1)	560-1 1/2 496 (500-1)	640-2 576 (600-2)	