

LOC/DME I-EWB 109.7 Chan 34	APP CRS 234°	Rwy Ldg TDZE Apt Elev	5000 78 79
---	------------------------	-----------------------------	---------------------------------------

LOC BC RWY 23

NEW BEDFORD RGNL (E'WB)

RADAR required for procedure entry.

- ▼ Circling Rwy 14 NA at night. Rwy 23 helicopter visibility reduction below ¾ NA.
- ▲ For inop ALS, increase S-23 Cat A/B visibility to 1 SM and Cat C/D to 1½ SM.

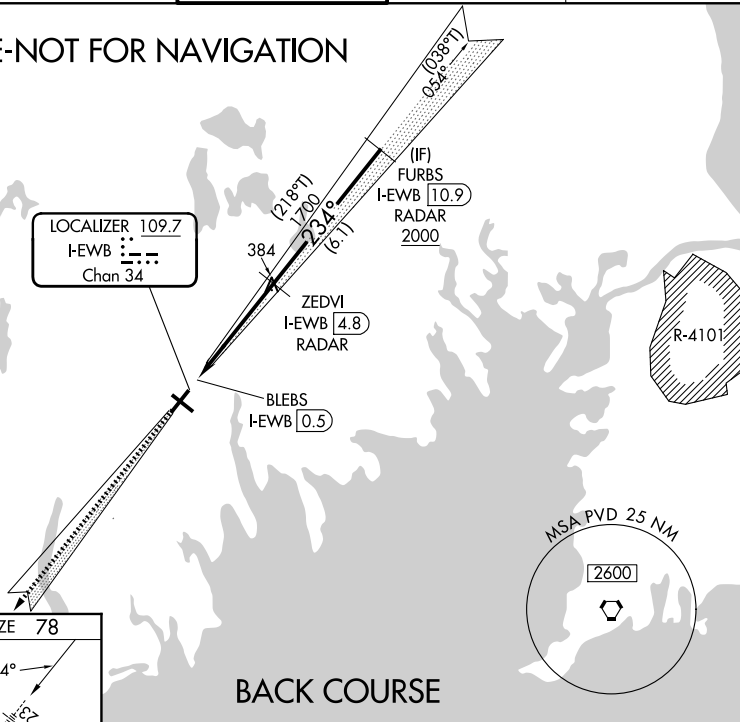
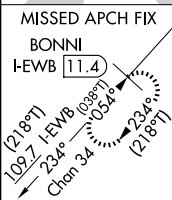


MISSED APPROACH:
Climb to 2100 on I-EWB SW course to BONNI INT/I-EWB 11.4 DME and hold.

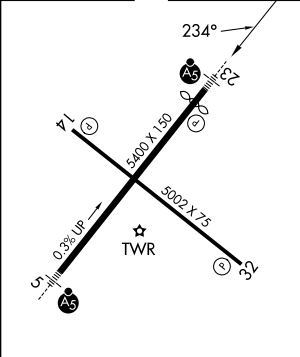
ATIS 126.85	PROVIDENCE APP CON* 128.7 269.525	NEW BEDFORD TOWER* 118.1 (CTAF) 239.0	GND CON 121.9	UNICOM 122.95
-----------------------	---	---	-------------------------	-------------------------

PROTOTYPE-NOT FOR NAVIGATION

LOCALIZER 109.7
I-EWB
Chan 34



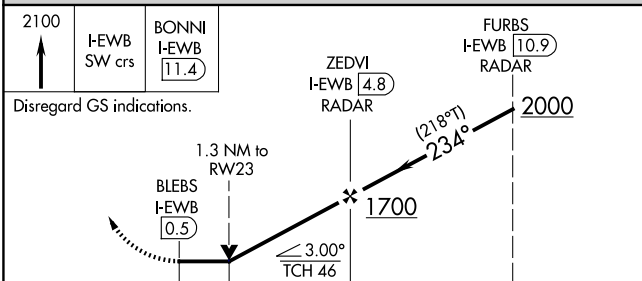
ELEV 79	TDZE 78
---------	---------



MIRL Rwy 14-32
HIRL Rwy 5-23
REIL Rwy 32

FAF to MAP 4.3 NM

Knots	60	90	120	150	180
Min:Sec	4:18	2:52	2:09	1:43	1:26



CATEGORY	A	B	C	D
S-23	580-¾	502 (600-¾)	580-1	502 (600-1)
CIRCLING	620-1 541 (600-1)	640-1 561 (600-1)	720-1¾ 641 (700-1¾)	960-3 881 (900-3)