

Flight Procedures Cover Page	Task Action: FLIGHT CHECK	Task Type: IAP	Estimated Chart Date: 03/19/2026	APWS Task ID: 6C665AC095F24DDBBB4E518DE89FC5F1	APWS Project ID: DD60EE4E87B54FEEAA6DBAC4293E4421
Procedure: LOC BC RWY 23 AMDT 13B		Enroute: NO	Specialist: Stubblefield, Byron		Agreement Number:
Airport ID: KEWB			Airport City: NEW BEDFORD		State: MA
Facility ID: EWB	Facility Type: ILS	Flight Inspection Remark Type: New FC Slot			

**Procedure Comments:**  
ACTIVE DATA USED

CLEARs NOTAM 3/8490 EWB IAP NEW BEDFORD RGNL, NEW BEDFORD, MA. ILS OR LOC RWY 5, AMDT 26B... LOC BC RWY 23, AMDT 13A... RNAV (GPS) RWY 23, AMDT 1A... RNAV (GPS) RWY 32, ORIG-C... RNAV (GPS) RWY 5, AMDT 1D... CIRCLING RWY 14 NA AT NIGHT. 2312211447-2512211447EST

POC: CASEY HILL, AJV-431, 405-954-0624





LOC/DME I-EWB <b>109.7</b> Chan <b>34</b>	APP CRS <b>234°</b>	Rwy Idg TDZE Apt Elev	<b>5000</b> <b>78</b> <b>79</b>
---	------------------------	-----------------------------	---------------------------------------

**OLD**

**LOC BC RWY 23**  
NEW BEDFORD RGNL (EWB)

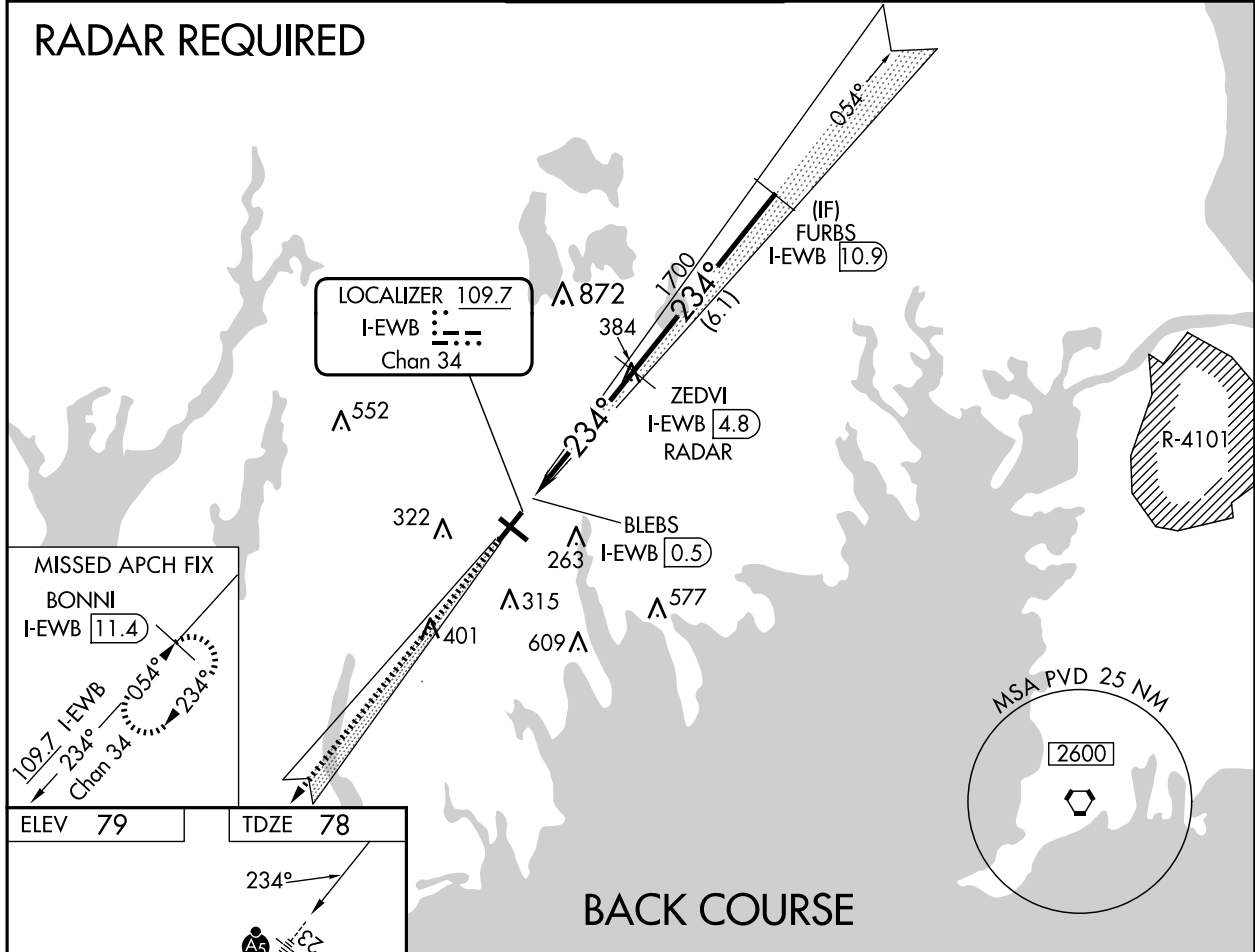
**⚠** When local altimeter setting not received, use Taunton altimeter setting and increase all MDA 40 feet and increase S-23 Cats C and D visibility 1/8 SM. VDP NA with Taunton altimeter setting. Helicopter visibility reduction below 3/4 SM NA. For inop MALSR increase S-23 Cat A/B visibility 1/4 mile and Cat C/D visibility 3/8 mile. For inop MALSR, when using Taunton altimeter setting, increase S-23 Cat A/B visibility 1/4 mile.

**MALS**  
A5

**MISSED APPROACH:** Climb to 2100 on I-EWB SW course to BONNI/I-EWB 11.4 DME and hold.

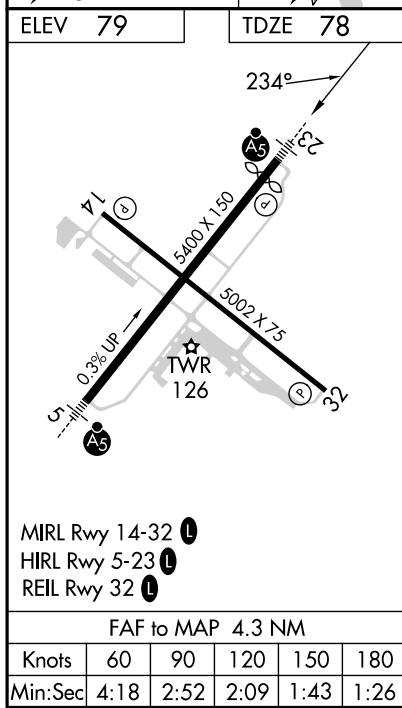
ATIS <b>126.85</b>	PROVIDENCE APP CON* <b>128.7 269.525</b>	NEW BEDFORD TOWER* <b>118.1 (CTAF) 239.0</b>	GND CON <b>121.9</b>	UNICOM <b>122.95</b>
-----------------------	---	---	-------------------------	-------------------------

**RADAR REQUIRED**



NE-1, 04 SEP 2025 to 02 OCT 2025

NE-1, 04 SEP 2025 to 02 OCT 2025



**BACK COURSE**

