

Flight Procedures Cover Page	Task Action: Abbreviated Amendment	Task Type: IAP	Estimated Chart Date: 03/19/2026	APWS Task ID: 6C8285EA07324D7C91AF572B3024672F	APWS Project ID: 64DFFE594A5948368079F3D4FC18370E
Procedure: RNAV (GPS) RWY 36 AMDT 1C		Enroute: NO	Specialist: Vega, Ana		Agreement Number:
Airport ID: KAHH			Airport City: AMERY		State: WI
Facility ID:	Facility Type:	Flight Inspection Remark Type:			

Procedure Comments:

Processed IAW Technical Support Group (AJF-17) Memo dated 07/07/2021, Subject: Guidance for Procedural Changes Requiring Flight Inspection/Validation

ABBREVIATED AMENDMENT UTILIZING ACTIVE DATA FOR AIRPORT AND RUNWAYS

INCORPORATE NOTAM FDC 5/7795

CONTACT KYLE THOMPSON 405-954-2135

QUALITY
10
CHECKED

QUALITY
29
CHECKED

WAAS CH 70433 W36A	APP CRS 357°	Rwy Ldg TDZE Apt Elev	4002 1088 1088
--	------------------------	-----------------------------	---

ACTIVE

RNAV (GPS) RWY 36

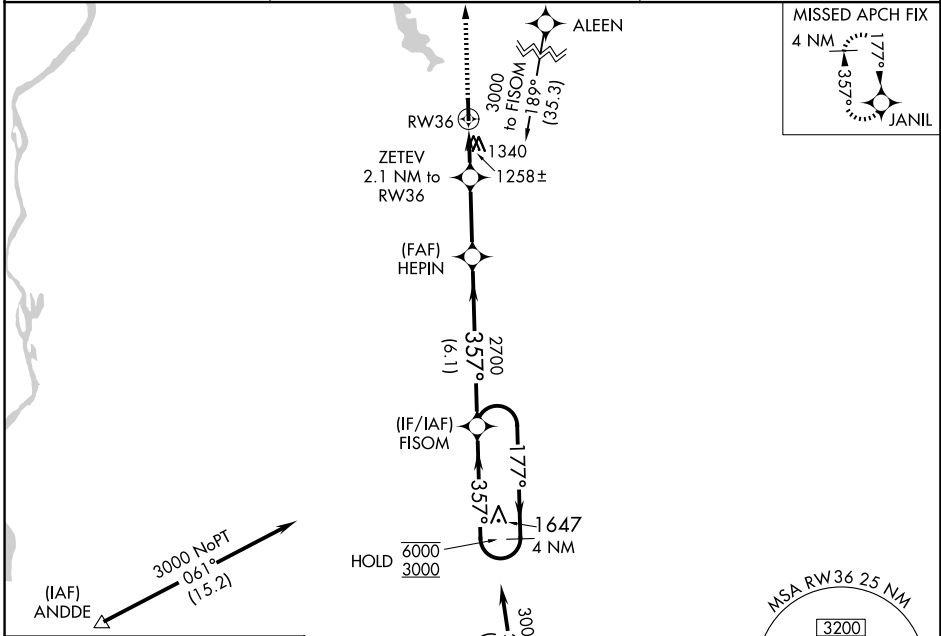
AMERY MUNI (AHH)

RNP APCH.

NA Rwy 36 helicopter visibility reduction below 3/4 SM NA. Use New Richmond altimeter setting; when not received, use Osceola altimeter setting and increase all MDAs 20 feet and Circling Cat C visibility 1/4 SM.

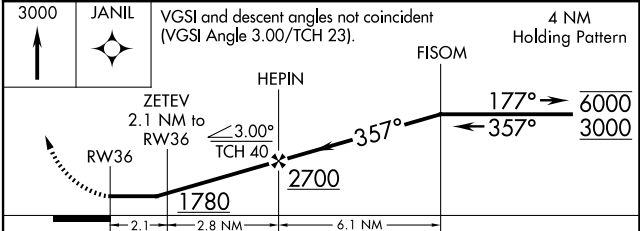
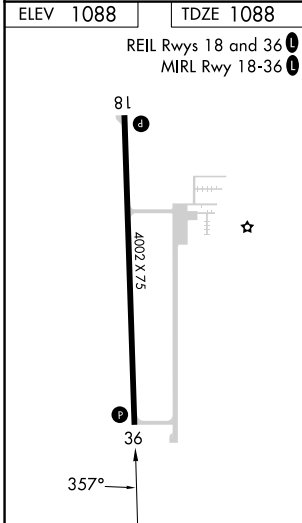
MISSED APPROACH:
Climb to 3000 direct JANIL and hold.

RNH AWOS-3 120.0	MINNEAPOLIS CENTER 125.3 335.6	UNICOM 122.8 (CTAF) 0
----------------------------	--	---------------------------------



EC-3, 07 AUG 2025 to 04 SEP 2025

EC-3, 07 AUG 2025 to 04 SEP 2025



CATEGORY	A	B	C	D
LP MDA	1560-1	472 (500-1)	1560-1 3/8 472 (500-1 3/8)	NA
LNAV MDA	1680-1	592 (600-1)	1680-1 3/4 592 (600-1 3/4)	NA
C CIRCLING	1740-1	652 (700-1)	1740-1 3/4 652 (700-1 3/4)	NA