

Flight Procedures Cover Page	Task Action: Abbreviated Amendment	Task Type: SID	Estimated Chart Date: 04/17/2025	APWS Task ID: 6D4D4CE10925411E8C151A6AF13A973A	APWS Project ID: 0731D8CEE0744C128B3490CDBD058D53
Procedure: ELANR EIGHT RNAV SID		Enroute: YES	Specialist: Johnson, Timothy		Agreement Number:
Airport ID: KGYG			Airport City: GARY/CHICAGO		State: IN
Facility ID:	Facility Type:	Flight Inspection Remark Type:			

Procedure Comments:
ACTIVE DATA USED.

UPDATE FORMS TO MATCH PUBLISHED DEPARTURE ROUTE ALTITUDE AT KLOT.

Processed IAW Technical Support Group (AJF-17) Memo dated 07/07/2021, Guidance for Procedural Changes Requiring Flight Inspection/Validation.

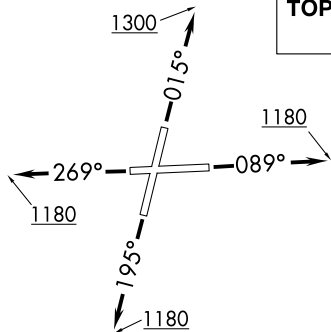
CONTACT: DAVID DANNER (405)-954-5077.



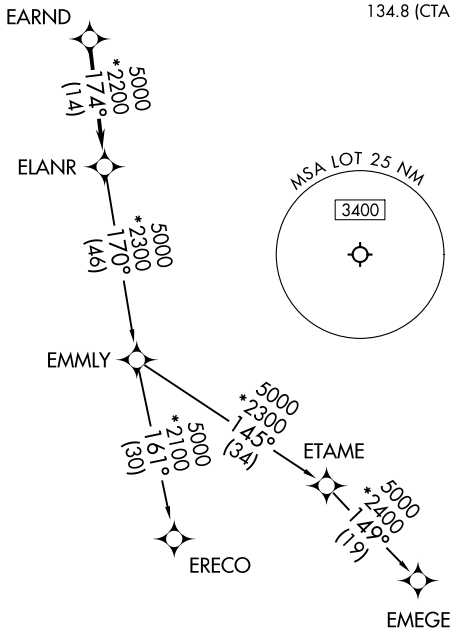
ELANR SEVEN DEPARTURE (RNAV)

**TOP ALTITUDE:
3000**

CHICAGO DEP CON
119.35 354.075
D-ATIS
126.675
GND CON
120.425
LEWIS TOWER *
134.8 (CTAF)



old



TAKEOFF MINIMUMS:

Rwys 9, 20, 27: Standard.
Rwy 2: Standard with minimum climb of 420' per NM to 1200.

NOTE: Turbojet departures maintain 250K until advised by ATC.
NOTE: EMMLY Transition: For aircraft inbound to Indianapolis Terminal Area, or as assigned by ATC.

RNAV 1 - DME/DME/IRU or GPS.
RADAR required.
RADAR required for non-GPS equipped aircraft.

NOTE: Chart not to scale.

DEPARTURE ROUTE DESCRIPTION

TAKEOFF RUNWAY 2: Climb on heading 015° to 1300, then as assigned by ATC, for vectors to EARND, thence. . . .
TAKEOFF RUNWAY 9: Climb on heading 089° to 1180, then as assigned by ATC, for vectors to EARND, thence. . . .
TAKEOFF RUNWAY 20: Climb on heading 195° to 1180, then as assigned by ATC, for vectors to EARND, thence. . . .
TAKEOFF RUNWAY 27: Climb on heading 269° to 1180, then as assigned by ATC, for vectors to EARND, thence. . . .

. . . . on track 174° to ELANR, then on (transition), maintain 3000.
Expect filed altitude 10 minutes after departure.

EMEGE TRANSITION (ELANR7.EMEGE):
EMMLY TRANSITION (ELANR7.EMMLY):
ERECO TRANSITION (ELANR7.ERECO):