

Flight Procedures Cover Page	Task Action: FLIGHT CHECK	Task Type: IAP	Estimated Chart Date: 05/14/2026	APWS Task ID: 6E65EA6DD47A44E4AE8B088DEB17B061	APWS Project ID: 2B20A859A3A4455FB6CAD1C7A73870E1
Procedure: VOR OR TACAN RWY 23 AMDT 15		Enroute: NO	Specialist: Weston, Daniel		Agreement Number:
Airport ID: KFWA			Airport City: FORT WAYNE		State: IN
Facility ID: FWA	Facility Type: VORTAC	Flight Inspection Remark Type: New FC Slot			

Procedure Comments:  
ACTIVE AIRNAV DATA USED.

CONTACT RAKE MCGRAW AJV-A422 405-954-8711

03/05/26: THIS IS AN UPDATED COPY OF THE FORMS DEVELOPED ON 10/31/25.

1. REQUIRED EFFECTIVE DATE CHANGED TO 05/14/2026.
2. ADDITIONAL FLIGHT DATA NOTE CHANGED TO LUERS TO RW23: 3.04/55.
3. FLIGHT CHECKED BY CHANGED TO PENDING.

QUALITY  
35  
CHECKED

QUALITY  
38  
CHECKED

QUALITY  
38  
CHECKED

QUALITY  
40  
CHECKED

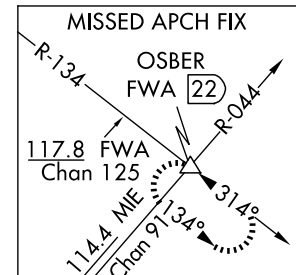
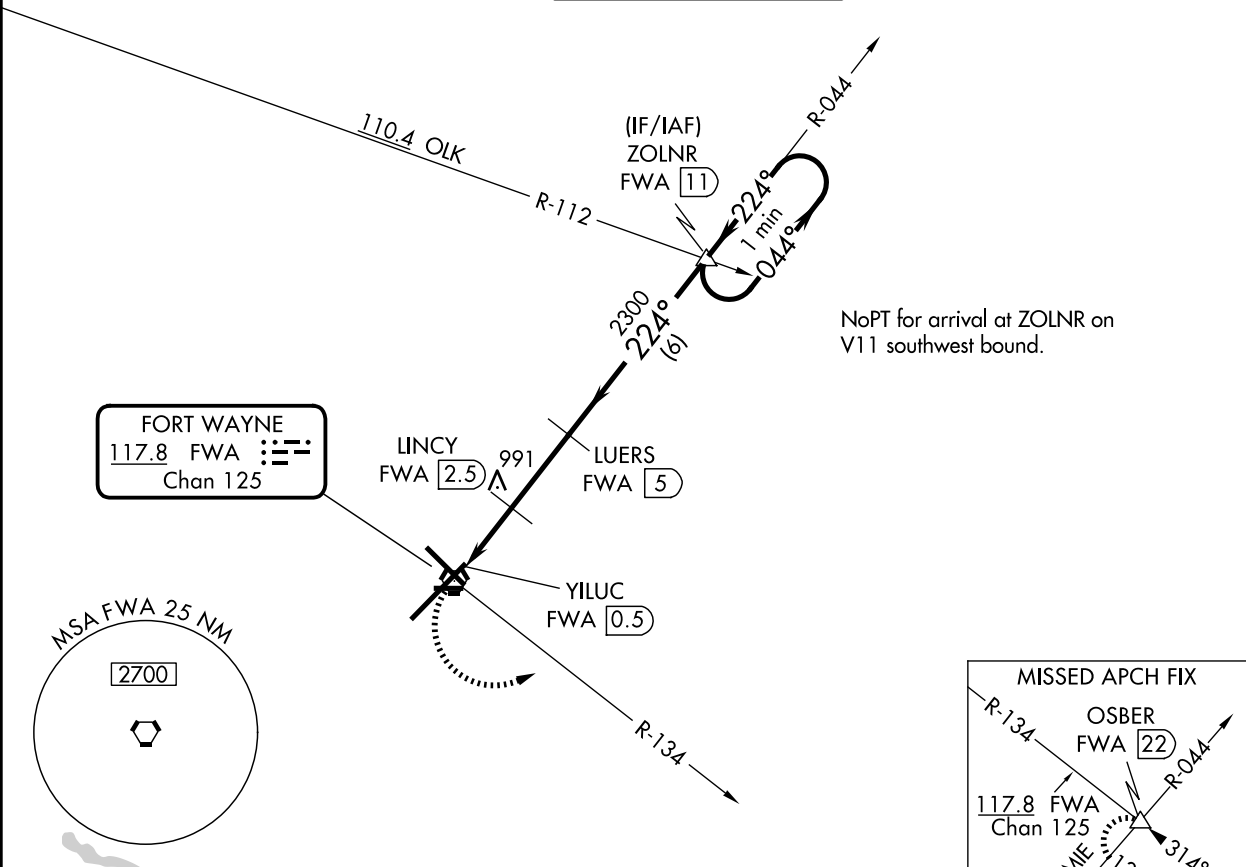
VORTAC FWA <b>117.8</b> Chan <b>125</b>	APP CRS <b>224°</b>	Rwy Ldg <b>11981</b> TDZE <b>799</b> Apt Elev <b>815</b>
---	------------------------	--

**OLD**

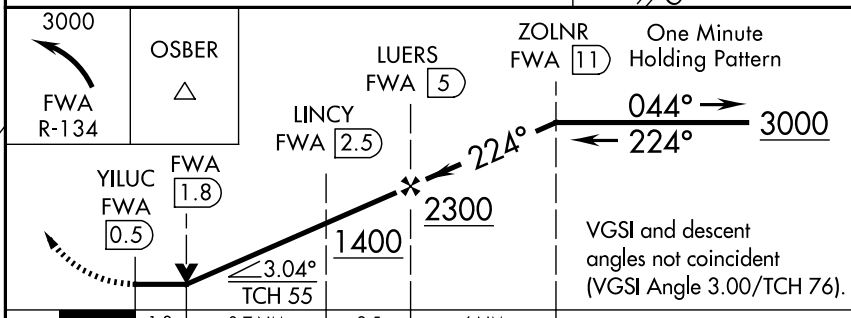
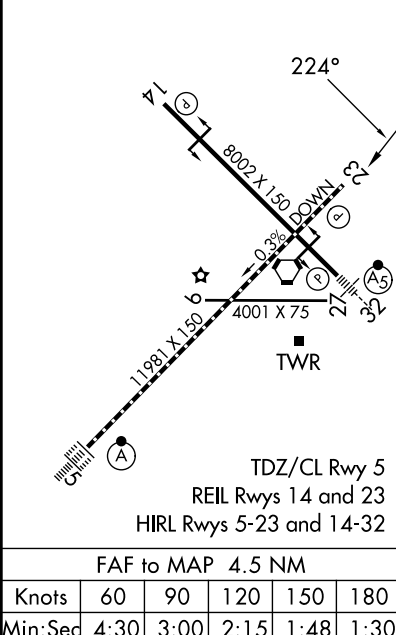
# VOR or TACAN RWY 23

FORT WAYNE INTL (FWA)

 MISSED APPROACH: Climbing left turn to 3000 on FWA VORTAC R-134 to OSBER INT/FWA 22 DME and hold.				
ATIS <b>121.25 360.825</b>	FORT WAYNE APP CON <b>127.2 284.6</b>	FORT WAYNE TOWER <b>119.1 269.325</b>	GND CON <b>121.9 348.6</b>	CLNC DEL <b>124.75</b>



ELEV 815	<b>D</b>	TDZE 799
----------	----------	----------



CATEGORY	A	B	C	D	E
S-23	1400/55	601 (600-1)	1400-1 <sup>3</sup> / <sub>4</sub>	601 (600-1 <sup>3</sup> / <sub>4</sub> )	
CIRCLING	1400-1	585 (600-1)	1420-1 <sup>3</sup> / <sub>4</sub> 605 (700-1 <sup>3</sup> / <sub>4</sub> )	1520-2 <sup>1</sup> / <sub>4</sub> 705 (800-2 <sup>1</sup> / <sub>4</sub> )	1520-2 <sup>1</sup> / <sub>2</sub> 705 (800-2 <sup>1</sup> / <sub>2</sub> )
LINCY FIX MINIMUMS					
S-23	1300/55	501 (500-1)	1300-1 <sup>3</sup> / <sub>8</sub>	501 (500-1 <sup>3</sup> / <sub>8</sub> )	
CIRCLING	1300-1	485 (500-1)	1420-1 <sup>3</sup> / <sub>4</sub> 605 (700-1 <sup>3</sup> / <sub>4</sub> )	1520-2 <sup>1</sup> / <sub>4</sub> 705 (800-2 <sup>1</sup> / <sub>4</sub> )	1520-2 <sup>1</sup> / <sub>2</sub> 705 (800-2 <sup>1</sup> / <sub>2</sub> )

EC-2, 02 OCT 2025 to 30 OCT 2025

EC-2, 02 OCT 2025 to 30 OCT 2025