

Flight Procedures Cover Page	Task Action: FLIGHT CHECK	Task Type: IAP	Estimated Chart Date: 03/19/2026	APWS Task ID: 6EC5130E49474FA08A54A984B232481E	APWS Project ID: 401C043F06B14BF2BFCD90A508F9E2B5
Procedure: ILS Y OR LOC Y RWY 1 AMDT 1B		Enroute: NO	Specialist: Burchell, Brandon		Agreement Number:
Airport ID: KUKF			Airport City: NORTH WILKESBORO		State: NC
Facility ID: BZM	Facility Type: VOR_DME	Flight Inspection Remark Type: New FC Slot			

Procedure Comments:
 Abbreviated Amendment.
 Clear NTM FDC 4/1690. LOC STEPDOWN New controlling obstacle. MDA/HAT increases 20ft.
 POC: KYLE THOMPSON, AJV A33, 405-954-2135.

QUALITY
38
CHECKED

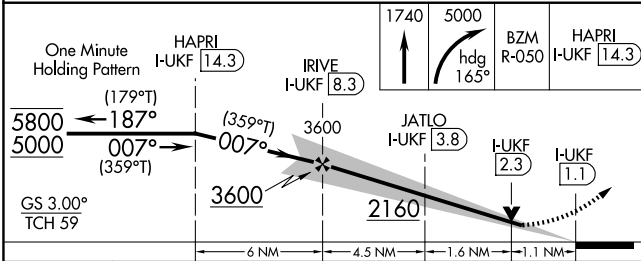
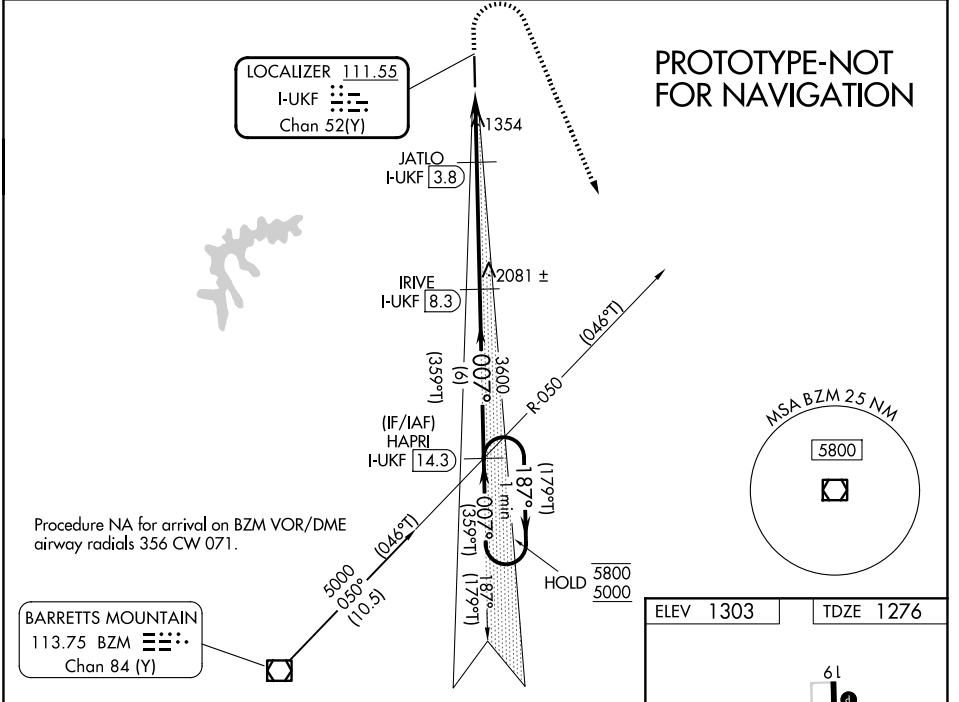
QUALITY
39
CHECKED

LOC/DME I-UKF 111.55 Chan 52 (Y)	APP CRS 007°	Rwy Ldg TDZE Apt Elev 6201 1276 1303
---	------------------------	--

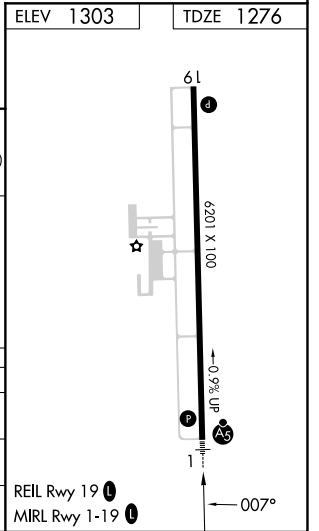
ILS Y or LOC Y RWY 1

WILKES COUNTY (UKF)

DME required.		MALSR 	MISSED APPROACH: Climb to 1740 then climbing right turn to 5000 heading 165° and BZM VOR/DME R-050 direct HAPRI/I-UKF 14.3 DME and hold, continue climb-in-hold to 5000.
AWOS-3 126.625	ATLANTA CENTER 125.15 263.0	UNICOM 122.7 (CTAF) 1	



CATEGORY	A	B	C	D
S-ILS 1	1476-1/2		200 (200-1/2)	
S-LOC 1	1660-1/2	384 (400-1/2)	1660-5/8	384 (400-3/8)
CIRCLING	1800-1 497 (500-1)	1880-1 577 (600-1)	1940-1 3/4 637 (700-1 3/4)	2260-3 957 (1000-3)

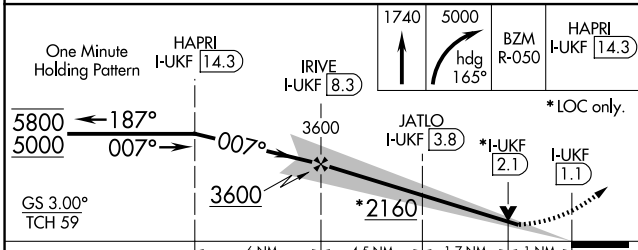
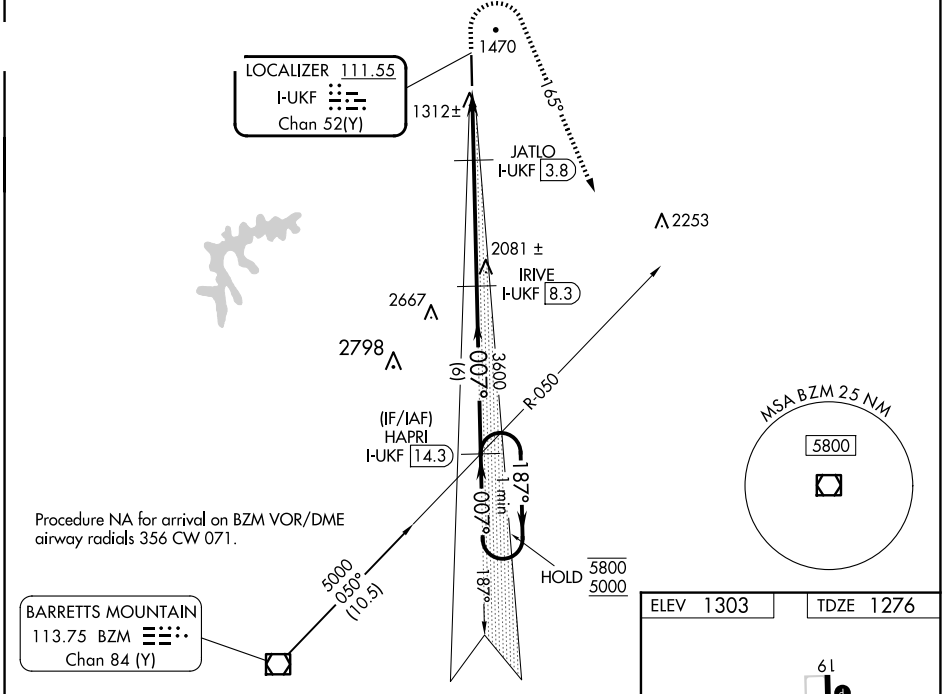


LOC/DME I-UKF 111.55 Chan 52 (Y)	APP CRS 007°	Rwy Idg TDZE Apt Elev 6201 1276 1303
---	------------------------	--

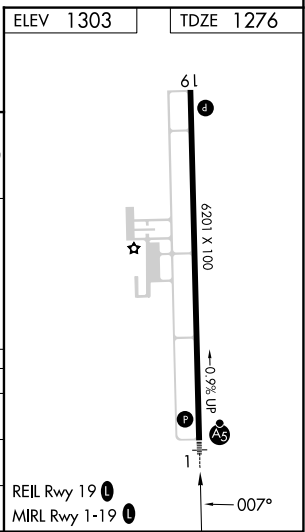
OLD

ILS Y or LOC Y RWY 1
WILKES COUNTY (UKF)

DME required.		MALSR 	MISSED APPROACH: Climb to 1740 then climbing right turn to 5000 heading 165° and BZM VOR/DME R-050 direct HAPRI/I-UKF 14.3 DME and hold, continue climb-in-hold to 5000.
AWOS-3 126.625	ATLANTA CENTER 125.15 263.0	UNICOM 122.7 (CTAF)	



CATEGORY	A	B	C	D
S-ILS 1	1476-1/2		200 (200-1/2)	
S-LOC 1	1640-1/2	364 (400-1/2)	1640-5/8	364 (400-5/8)
CIRCLING	1800-1 497 (500-1)	1880-1 577 (600-1)	1880-1 1/2 577 (600-1/2)	2240-3 937 (1000-3)



SE-2, 04 SEP 2025 to 02 OCT 2025

SE-2, 04 SEP 2025 to 02 OCT 2025