

Flight Procedures Cover Page	Task Action: P-NOTAM	Task Type: IAP	Estimated Chart Date: 07/09/2026	APWS Task ID: 6F9FCFCA606048E88F7AD6FE3C4E0196	APWS Project ID: B0ED4B7951274CE3844F07F069B1DD97
Procedure: RNAV (GPS) RWY 36 ORIG-B		Enroute: NO	Specialist: Johnson, Timothy		Agreement Number:
Airport ID: KGMJ			Airport City: GROVE		State: OK
Facility ID:	Facility Type:	Flight Inspection Remark Type:			

Procedure Comments:

Visibility Initiative (Garmin) - Update IAP visibility minimums IAW Order 8260.3, Chapter 3, Section 3-3. Visibility Minimums.

PROCESSED IAW TECHNICAL SUPPORT GROUP (AJF-17) MEMO DATED 07/07/2021, SUBJECT: GUIDANCE FOR PROCEDURAL CHANGES REQUIRING FLIGHT INSPECTION/VALIDATION.

CONTACT: CASEY HILL (405) 954-0624.



OLD

GROVE, OKLAHOMA

AL-6721 (FAA)

26078

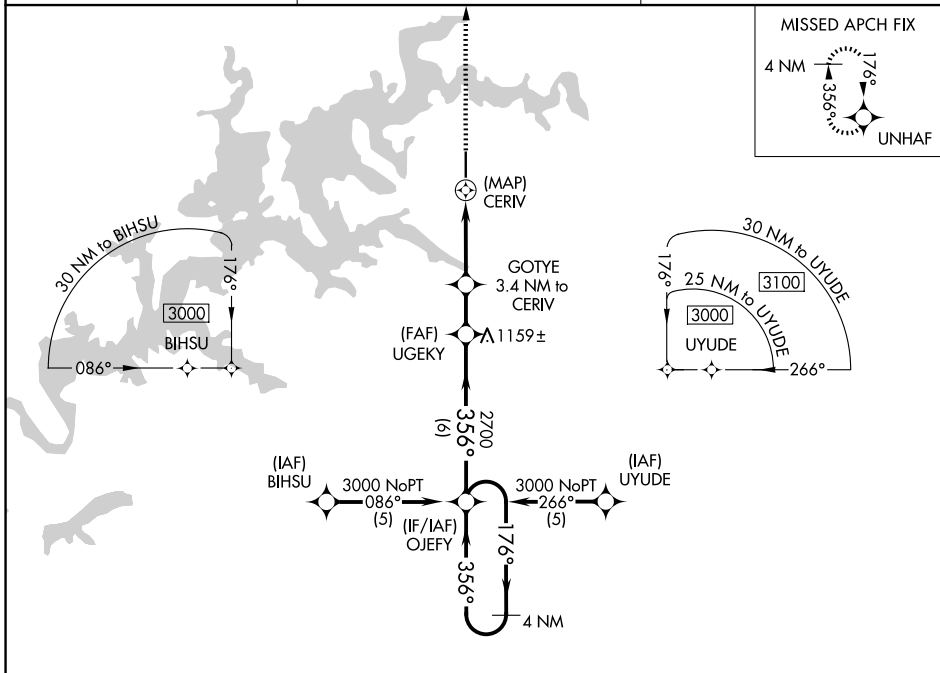
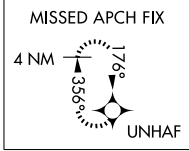
APP CRS 356°	Rwy Ldg TDZE Apt Elev	5200 830 831
------------------------	-----------------------------	---

RNAV (GPS) RWY 36

GROVE RGNL (G.M.J)

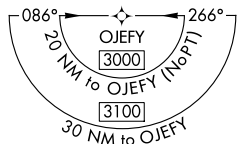
▼ DME/DME RNP-0.3 NA. MISSED APPROACH: Climb to 3000 direct UNHAF and hold.

AWOS-3PT 119.025	KANSAS CITY CENTER 128.6 282.325	UNICOM 122.8 (CTAF)
----------------------------	--	-------------------------------

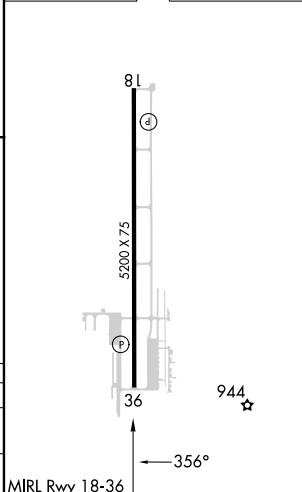
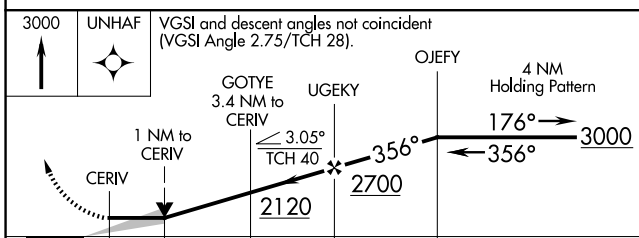


SC-1, 19 MAR 2026 to 16 APR 2026

SC-1, 19 MAR 2026 to 16 APR 2026



ELEV 831	TDZE 830
----------	----------



CATEGORY	A	B	C	D
LNVA MDA	1280-1 450 (500-1)		1280-1¼ 450 (500-1¼)	NA
CIRCLING	1500-1 669 (700-1)		1500-1¾ 669 (700-1¾)	NA

GROVE, OKLAHOMA
Orig-A 13AUG20

36°36'N-94°44'W

RNAV (GPS) RWY 36

GROVE RGNL (G.M.J)