
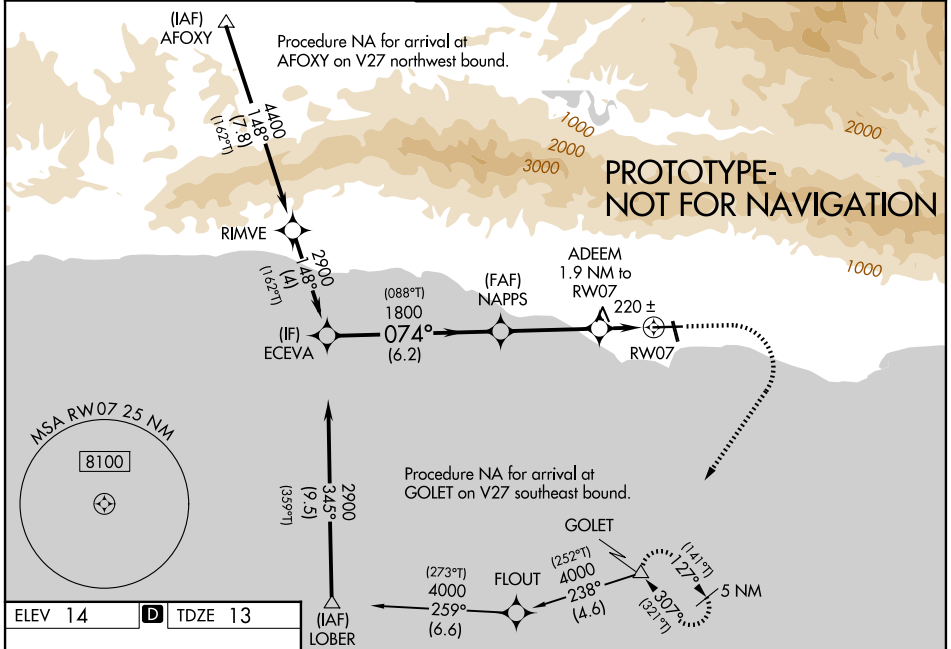


WAAS CH <b>78306</b> <b>W07A</b>	APP CRS <b>074°</b>	Rwy Ldg TDZE Apt Elev	<b>6052</b> <b>13</b> <b>14</b>
----------------------------------------	------------------------	-----------------------------	---------------------------------------

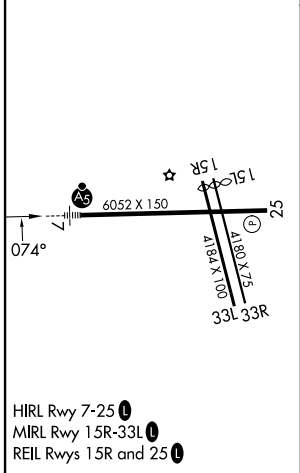
# RNAV (GPS) RWY 7

SANTA BARBARA MUNI (SBA)

RNP APCH - GPS.		<p><b>⚠</b> For uncompensated Baro-VNAV systems, LNAV/VNAV NA below 2°C or above 54°C. Circling Rwy 15L/R and 33L/R NA at night. Circling NA for Cats C and D north of Rwy 7-25. For inop ALS, increase LNAV/VNAV all Cats visibility to 1 3/8 SM and LNAV Cats C and D increase visibility to 1 3/8 SM.</p>		<p>MALS R</p> 		<p>MISSED APPROACH: Climb to 700 then climbing right turn to 4000 direct GOLET and hold, continue climb-in-hold to 4000.</p>	
ATIS <b>132.65</b>	SANTA BARBARA APP CON * <b>120.55 319.15</b> (151°-329°) <b>125.4 291.1</b> (330°-150°)	SANTA BARBARA TOWER * <b>119.7</b> (CTAF) <b>0 254.35</b>		GND CON <b>121.7</b>	UNICOM <b>122.95</b>		



ELEV 14	<b>D</b>	TDZE 13
---------	----------	---------



	700	4000	GOLET
	↑	↷	△
ECEVA	NAPPS	ADEEM	RW07
2900	1800	1.9 NM to RW07	1.3 NM to RW07
GP 3.00° TCH 52	680		
	6.2 NM	3.5 NM	0.6
CATEGORY	A	B	C
LPV DA		263/24	250 (300-1/2)
LNAV/VNAV DA		480/50	467 (500-1)
LNAV MDA	480/24	467 (500-1/2)	480/50 467 (500-1)
CIRCLING	700-1 686 (700-1)	760-1 746 (800-1)	760-2 1/4 746 (800-2 1/4) 900-3 886 (900-3)