

Flight Procedures Cover Page	Task Action: FLIGHT CHECK	Task Type: IAP	Estimated Chart Date: 03/19/2026	APWS Task ID: 6FD8939A9D3C4A96B86DBEC8AFCA4442	APWS Project ID: 425A7E6CEAE149E999A9974E66A68B34
Procedure: RNAV (GPS) RWY 7 AMDT 2		Enroute: NO	Specialist: Strobach, Ronald		Agreement Number:
Airport ID: KSBA			Airport City: SANTA BARBARA		State: CA
Facility ID:	Facility Type:	Flight Inspection Remark Type: New FC Slot			

Procedure Comments:

ACTIVE AIRNAV DATA USED FOR KSBA AND RUNWAY.

MISSED APPROACH REDESIGNED TO MIRROR ILS OR LOC RWY 7.

FIXES CESRA AND IYOBE CANCELLED - MISSED APPROACH REDESIGN.

LOWERED APPROACH MINS:

- LPV DA/HAT FROM 309/296 TO 263/250.
- LNAV/VNAV DA/HAT FROM 603/590 TO 480/467.
- LNAV MDA/HAT FROM 820/807 TO 480/467.
- CAT A CMDA/HAA FROM 820/806 TO 700/686.
- CAT B CMDA/HAA FROM 840/826 TO 760/746.
- CAT C CMDA/HAA FROM 840/826 TO 760/746.
- CAT D CMDA/HAA FROM 1000/986 TO 900/886.

CONTACT CASEY HILL, AJV-A421, 405-954-0624



FIPC BASIC FORM

PROCEDURE: RNAV (GPS) RWY 7 AMDT 2		AIRPORT NAME: SANTA BARBARA MUNI		AIRPORT ID: KSBA	SPECIAL CONTROL NO: SG-11-157-25
FAC ID: KSBA07.02		CITY: SANTA BARBARA		ST: CA	ORIG CHART DATE: 03/19/2026
DFL TYPE: PROC/S	THIRD PARTY: <input type="checkbox"/> YES	EST. TIME ON SITE: 0.4	REIMB. NUMBER:	PTS TASK ID: 6FD8939A9D3C4A96B86DBEC8AFCA4442	

PREFLIGHT NOTES

REVIEWER: troy e devine	DATE: 12/17/2025
COMMENTS:	CHECK ONE: <input checked="" type="checkbox"/> FLT CK REQ <input type="checkbox"/> NFCR <input type="checkbox"/> REJECT
	YES NO
	CPV COMPLETE? <input checked="" type="checkbox"/> X <input type="checkbox"/>

PROCEDURE RESULTS

INSPECTION DATE: 12/17/2025	CREW #: VN502	N #: N71	INSTRUMENT PROCEDURE STATUS: <input checked="" type="checkbox"/> SAT <input type="checkbox"/> SAT W/CHANGES <input type="checkbox"/> UNSAT	ARINC CODING: <input checked="" type="checkbox"/> SAT <input type="checkbox"/> SAT/GOLD <input type="checkbox"/> UNSAT
FLIGHT INSPECTOR SIGNATURE: troy e devine @ 12/17/2025 21:03		PRINTED NAME: DEVINE, TROY ELLEN		NOTAM INITIATED? <input type="checkbox"/> YES <input checked="" type="checkbox"/> NO

FLIGHT INSPECTOR REMARKS:
 SG-11-157-25 Santa Barbra Muni, Santa Barbra CA,, RNAV (GPS) RWY 07 Amd 2 - SAT
 Reconfiguration, new step ADEEM, redesigned missed approach, lowered Circle mins.
 Runway Survey 100% SAT
 CRC remainder: 6C2F60C1

IN-FLIGHT OBSTACLE REPORT

OBSTRUCTION ID #:	COORDINATES OR LOCATION:	GNSS ALTITUDE (MSL):	BAROMETRIC ALTITUDE (MSL):	HEIGHT ABOVE GROUND LEVEL:
--------------------------	---------------------------------	-----------------------------	-----------------------------------	-----------------------------------



RNAV (GPS) RWY 7
SANTA BARBARA MUNI (SBA)

WAAS CH 78306 W07A	APP CRS 074°	Rwy Ldg TDZE Apt Elev	6052 13 14
--	------------------------	-----------------------------	---------------------------------------

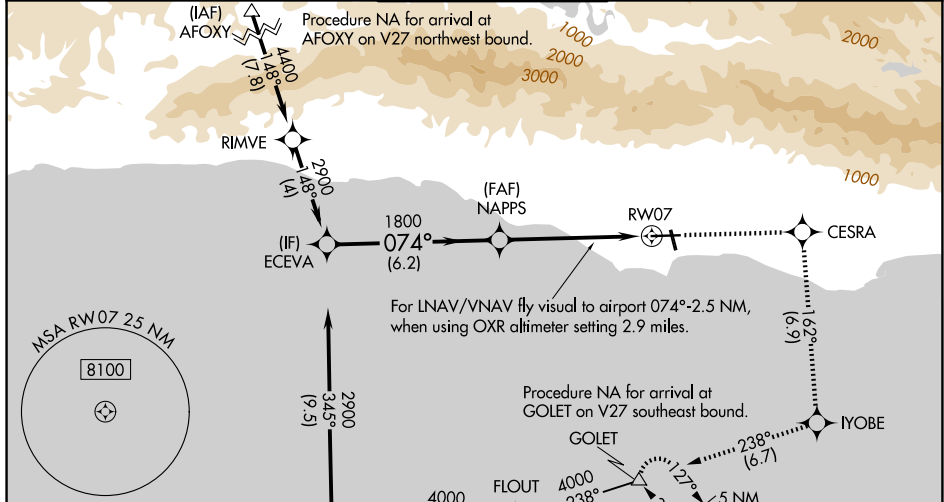
RNP APCH - GPS.

⚠ For uncompensated Baro-VNAV systems, LNAV/VNAV NA below 3°C or above 54°C.
⚠ Circling Rwy 15L/R and 33L/R NA at night. Rwy 7 helicopter visibility reduction below RVR 4000 NA. When local altimeter setting not received, use OXR altimeter setting and increase LPV DA to 392 feet; increase LNAV/VNAV DA to 686 feet and all visibilities ¼ SM. Increase all MDAs 100 feet, and LNAV visibility Cat C and D ½ SM, and Circling visibility Cat A/C ½ SM. VDP and Baro-VNAV NA when using OXR altimeter setting. For inop ALS, increase LPV all Cats visibility to RVR 4500 and LNAV Cat A to RVR 5500 and Cat C/D to 2 ½ SM. For inop ALS when using OXR altimeter setting, increase LPV all Cats visibility to RVR 5000 and LNAV/VNAV all Cats visibility to 1 ½ SM. Circling NA for Cats C and D north of Rwy 7-25.

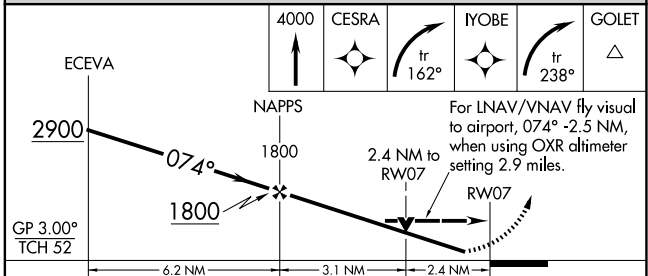
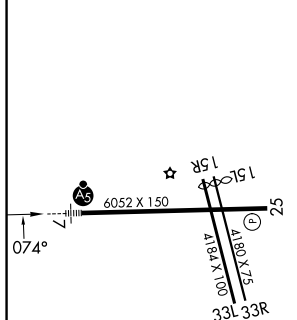


MISSED APPROACH: Climb to 4000 direct CESRA and right turn on track 162° to YOBE and right turn on track 238° to GOLET and hold, continue climb-in-hold to 4000.

ATIS 132.65	SANTA BARBARA APP CON* 120.55 319.15 (151°-329°) 125.4 291.1 (330°-150°)	SANTA BARBARA TOWER* 119.7 (CTAF) 0 254.35	GND CON 121.7	CLNC DEL 132.9	UNICOM 122.95
-----------------------	--	---	-------------------------	--------------------------	-------------------------



ELEV 14	D	TDZE 13
---------	----------	---------



CATEGORY	A	B	C	D
LPV DA		309/40	296 (300-¾)	
LNAV/VNAV DA		603-1¼	590 (600-1¼)	
LNAV MDA	820/40	807 (900-¾)	820-1⅞	807 (900-1⅞)
CIRCLING	820-1 806 (900-1)	840-1¼ 826 (900-1¼)	840-2½ 826 (900-2½)	1000-3 986 (1000-3)

HIRL Rwy 7-25 **Ⓛ**
 MIRL Rwy 15R-33L **Ⓛ**
 REIL Rwy 15R and 25 **Ⓛ**