

FEDERAL AVIATION ADMINISTRATION  
FLIGHT STANDARDS SERVICE  
STANDARD TERMINAL ARRIVAL (STAR)

Bearings, headings, courses, tracks and radials are magnetic. Elevations and altitudes are in feet, MSL. Altitudes are minimum altitudes unless otherwise indicated.  
Ceilings are in feet above airport elevation. Distances are in nautical miles. Visibilities are in statute miles or feet RVR unless otherwise indicated.

Arrival Name	Number	STAR Computer Code	Superseded Number	Dated	Effective Date
PASLY (RNAV)	FIVE	PASLY.PASLY5	FOUR	01/05/2017	

**TRANSITION ROUTES:**

Transition Name	Transition Computer Codes	From FIX/NAVAID	To FIX/NAVAID	Course	Distance	MEA	MOCA	MAA	Crossing Altitudes / Fixes
CUTRR	CUTRR.PASLY5	CUTRR	CUTRR						
			GROAT	241.86	32.00	11000	2600		AT FL220
			PASLY	242.76	21.80	11000	2500		BETWEEN 15000 AND FL190
GROAT	GROAT.PASLY5	GROAT	GROAT						AT FL220
			PASLY	242.76	21.80	11000	2500		BETWEEN 15000 AND FL190

**ARRIVAL ROUTE DESCRIPTION:**

FROM PASLY ON TRACK 242.53/10.00 TO CROSS CARAP AT OR ABOVE 12000, THEN ON TRACK 242.42/4.00 TO DAANG.

LANDING RWY 2L/C/R: FROM DAANG ON TRACK 242.37/20.70 TO CROSS KNTRY AT OR ABOVE 10000 AND AT 250 KIAS, THEN ON TRACK 242.15/6.00 TO CROSS CLBTY AT OR ABOVE 9000 AND AT 230 KIAS, THEN ON TRACK 201.08/7.15 TO CROSS ZODKA AT 8000 AND AT 210 KIAS, THEN ON TRACK 201.08. EXPECT RADAR VECTORS TO FINAL APPROACH COURSE.

LANDING RWY 13: FROM DAANG ON TRACK 242.41/15.50 TO CROSS HEEHW AT OR ABOVE 10000 AND AT 250 KIAS, THEN ON TRACK 242.24/15.81 TO CROSS BEJMN AT 8000 AND AT 210 KIAS, THEN ON TRACK 316.75/7.46 TO CROSS NOPOC AT 8000 AND AT 210 KIAS, THEN ON TRACK 316.75. EXPECT RADAR VECTORS TO FINAL APPROACH COURSE.

LANDING RWY 20L/C/R: FROM DAANG ON TRACK 242.37/6.36 TO HRMTG, THEN ON TRACK 291.02/8.02 TO CROSS RDNEK AT 6000 AND AT 210 KIAS, THEN ON TRACK 291.02. EXPECT RADAR VECTORS TO FINAL APPROACH COURSE.

LANDING RWY 31: FROM DAANG ON TRACK 251.78/21.56 TO CROSS PRNZS AT OR ABOVE 10000 AND AT 250 KIAS, THEN ON TRACK 230.96/5.28 TO HATIB, THEN ON TRACK 194.91/5.08 TO CROSS RNDEE AT 9000 AND AT 210 KIAS, THEN ON TRACK 136.25/2.50 TO CROSS MCGRW AT 9000 AND AT 210 KIAS, THEN ON TRACK 136.25. EXPECT RADAR VECTORS TO FINAL APPROACH COURSE.

**PBN REQUIREMENT NOTES:**

RNAV 1 - DME/DME/IRU OR GPS

**EQUIPMENT REQUIREMENT NOTES:**

RADAR REQUIRED

**PROCEDURAL DATA NOTES:**

NOTE: JET AIRCRAFT ONLY

NOTE: LANDING NORTH USE RWY 2R TRANSITION, LANDING SOUTH USE RWY 20L TRANSITION.

NOTE: EXPECT TO RECEIVE LANDING DIRECTION AND DESCEND VIA CLEARANCE FROM MEMPHIS CENTER. EXPECT RWY ASSIGNMENT FROM NASHVILLE APPROACH.

NOTE: GROAT TRANSITION, ATC ASSIGNED ONLY.

**FIXES AND/OR HOLDING PATTERNS:**

CHART HOLDING AT PASLY: HOLD NE, RT, 242.53 INBOUND, 10 NM LEGS.

CHART HOLDING AT CUTRR: HOLD NE, RT, 242.83 INBOUND, 10 NM LEGS.

**COMMUNICATIONS:**

**AIRPORTS SERVED:**

**AIRPORT ID**  
BNA

**CITY**  
NASHVILLE

**STATE**  
TN

FEDERAL AVIATION ADMINISTRATION  
FLIGHT STANDARDS SERVICE  
STANDARD TERMINAL ARRIVAL (STAR)

Bearings, headings, courses, tracks and radials are magnetic. Elevations and altitudes are in feet, MSL. Altitudes are minimum altitudes unless otherwise indicated.  
Ceilings are in feet above airport elevation. Distances are in nautical miles. Visibilities are in statute miles or feet RVR unless otherwise indicated.

Arrival Name	Number	STAR Computer Code	Superseded Number	Dated	Effective Date
PASLY (RNAV)	FIVE	PASLY.PASLY5	FOUR	01/05/2017	

**LOST COMMUNICATIONS PREFERENCES:**

**REMARKS:**

ENVIRONMENTAL REVIEW UNDER ORDER 1050.1 (LATEST EDITION) AND THE NOISE SCREENING HAVE BEEN ACCOMPLISHED.

**ADDITIONAL FLIGHT DATA:**

DME/DME ASSESSMENT: SAT (RNP 2.0)

MAG VAR: BNA 03W/2010

CHART AT MCGRW TERMINUS: BNA LDG RWY 31

CHART AT ZODKA TERMINUS: BNA LDG RWY 2L/C/R

CHART AT RDNEK TERMINUS: BNA LDG RWY 20L/C/R

CHART AT NOPOC TERMINUS: BNA LDG RWY 13

**FLIGHT INSPECTED BY:**

**ORGANIZATION:**    **DATE:**

Flight Inspected Signature: \_\_\_\_\_

**DEVELOPED BY:**

JOEY TINSLEY, ESC OSG PBN CO-LEAD

NATCA

09/26/2024

Developed By Signature: \_\_\_\_\_

**APPROVED BY:**

BEV BORDY

AJV-A420

Approved By Signature: \_\_\_\_\_

**CHANGES:**

1. REMOVED FORKS AND LVT EN ROUTE TRANSITIONS.
2. ADDED NEW EN ROUTE TRANSITION FROM NEW WAYPOINT CUTRR.
3. ESTABLISHED HOLDING AT CUTRR: HOLD NE, RT, 242.83 INBOUND, 10 NM LEGS.
4. CUTTR AND GROAT TRANSITIONS: AMENDED ALTITUDE RESTRICTION AT PASLY FROM AT/ABOVE 12000/BELOW FL200 TO BETWEEN 15000 AND FL 190 AND AT 280 KIAS.
5. GROAT TRANSITION: AMENDED ALTITUDE RESTRICTION AT GROAT FROM AT/BELOW FL230 TO AT FL220.
6. COMMON ROUTE: REMOVED FIX BODDY.
7. COMMON ROUTE: AMENDED ALTITUDE RESTRICTION AT CARAP FROM AT/ABOVE 10000 TO AT/ABOVE 12000.
8. LANDING RWY 2L/C/R: ADDED NEW FIX KNTRY (AT/ABOVE 10000 AND AT 250 KIAS), MOVED CLBTY 3NM SOUTHWEST AND CHANGED SPEED RESTRICTION FROM 250 KIAS TO 230 KIAS AND ADDED AT/ABOVE 9000 CROSSING ALTITUDE.
9. LANDING RWY 2L/C/R: ADDED NEW FIX KNTRY (AT/ABOVE 10000 AND AT 250 KIAS); REMOVED FIXES JABUN AND DRAND; MOVED CLBTY 3NM SOUTHWEST AND CHANGED RESTRICTIONS FROM AT/ABOVE 6000 TO AT/ABOVE 9000 AND AT 250 KIAS TO AT 230 KIAS, CHANGED ZODKA ALTITUDE RESTRICTION FROM AT 5000 TO AT 8000.
10. LANDING RWY 20L/C/R: ADDED NEW FIXES HRMTG AND RENEK (AT 6000 AND AT 210 KIAS); REMOVED FIXES BODDY AND MUUDD.
11. LANDING RWY 13: ADDED FIXES HEEHW (AT/ABOVE 10000 AND 250 KIAS), BEJMN (AT 8000 AND AT 210 KIAS); CHANGED ALTITUDE RESTRICTION AT NOPOC FROM AT 5000 TO AT 8000 WITH AT 210 KIAS SPEED RESTRICTION; REMOVED FIXES JABUN AND FIBAX.

FEDERAL AVIATION ADMINISTRATION  
FLIGHT STANDARDS SERVICE  
STANDARD TERMINAL ARRIVAL (STAR)

Bearings, headings, courses, tracks and radials are magnetic. Elevations and altitudes are in feet, MSL. Altitudes are minimum altitudes unless otherwise indicated.  
Ceilings are in feet above airport elevation. Distances are in nautical miles. Visibilities are in statute miles or feet RVR unless otherwise indicated.

Arrival Name	Number	STAR Computer Code	Superseded Number	Dated	Effective Date
<b>PASLY (RNAV)</b>	<b>FIVE</b>	<b>PASLY.PASLY5</b>	<b>FOUR</b>	<b>01/05/2017</b>	
12. LANDING RWY 31: ADDED NEW FIXES PRNZS (AT/ABOVE 10000 AND AT 250 KIAS), HATIB, RNDEE (AT 9000 AND AT 210 KIAS), AND MCGRW (AT 9000 AND AT 210 KIAS); REMOVED FIXES BODDY AND MUGEE. 13. CHANGED TURBOJET NOTE TO REFLECT JET. 14. REMOVED MEAs FROM ARRIVAL ROUTE DESCRIPTIONS. 15. CONSOLIDATED CHART NOTES EXPECT TO RECEIVE LANDING DIRECTION (NORTH/SOUTH/NORTHWEST) AND "DESCEND VIA" CLEARANCE FROM MEMPHIS CENTER; NASHVILLE APPROACH WILL ISSUE LANDING RUNWAY TO READ NOTE: EXPECT TO RECEIVE LANDING DIRECTION AND DESCEND VIA CLEARANCE FROM MEMPHIS CENTER. EXPECT RWY ASSIGNMENT FROM NASHVILLE APPROACH. 16. REMOVED CHART NOTE AT MUDD: LANDING RWY 20L/20C/20R: AFTER MUDD, TRACK 270, EXPECT RADAR VECTORS TO FINAL APPROACH COURSE. 17. REMOVED CHART NOTE AT MUGEE: LANDING RWY 31 : AFTER MUGEE, TRACK 200, EXPECT RADAR VECTORS TO FINAL APPROACH COURSE. 18. REMOVED CHART: CROSS FORKS AND GROAT AT/BELOW FL230. 19. CONSOLIDATED CHART NOTES LANDING SOUTH INDICATES RWY 20L/20C/20R. LANDING NORTH INDICATES RWY 2L/2C/2R. LANDING NORTHWEST INDICATES RWY 31. TO READ NOTE: LANDING NORTH USE RWY 02R TRANSITION, LANDING SOUTH USE RWY 20L TRANSITION. 20. ADDED PROCEDURAL DATA NOTE: DO NOT FILE GROAT TRANSITION - TO BE ASSIGNED BY ATC. 21. ADDED MOCA VALUES TO ALL TRANSITION ROUTES. 22. REMOVED NOTES RNAV-1 AND DME/DME/IRU OR GPS REQUIRED FROM PROCEDURAL DATA NOTES AND ADDED NOTE RNAV 1 - DME/DME/IRU OR GPS TO PBN REQUIREMENT NOTES. 23. MOVED RADAR REQUIRED FROM PROCEDURAL DATA NOTES TO EQUIPMENT REQUIREMENT NOTES. 24. ADDED TERMINUS INFORMATION TO ADDITIONAL FLIGHT DATA FOR RWYS 20L/C/R, 13, 31, 2L/C/R. 25. REMOVED AIRPORT NAME FROM AIRPORTS SERVED AND ADDED AIRPORT ID; REMOVED K IDENT FROM 17.1 FORM. 26. RECOMMENDED NAVAID AND HOLDING INFORMATION REMOVED FROM 8260-17.2. 27. REMOVED NASHVILLE EAST APPROACH CONTROL (118.4/360.7) AND NASHVILLE INTL ATIS FROM COMMUNICATIONS.					

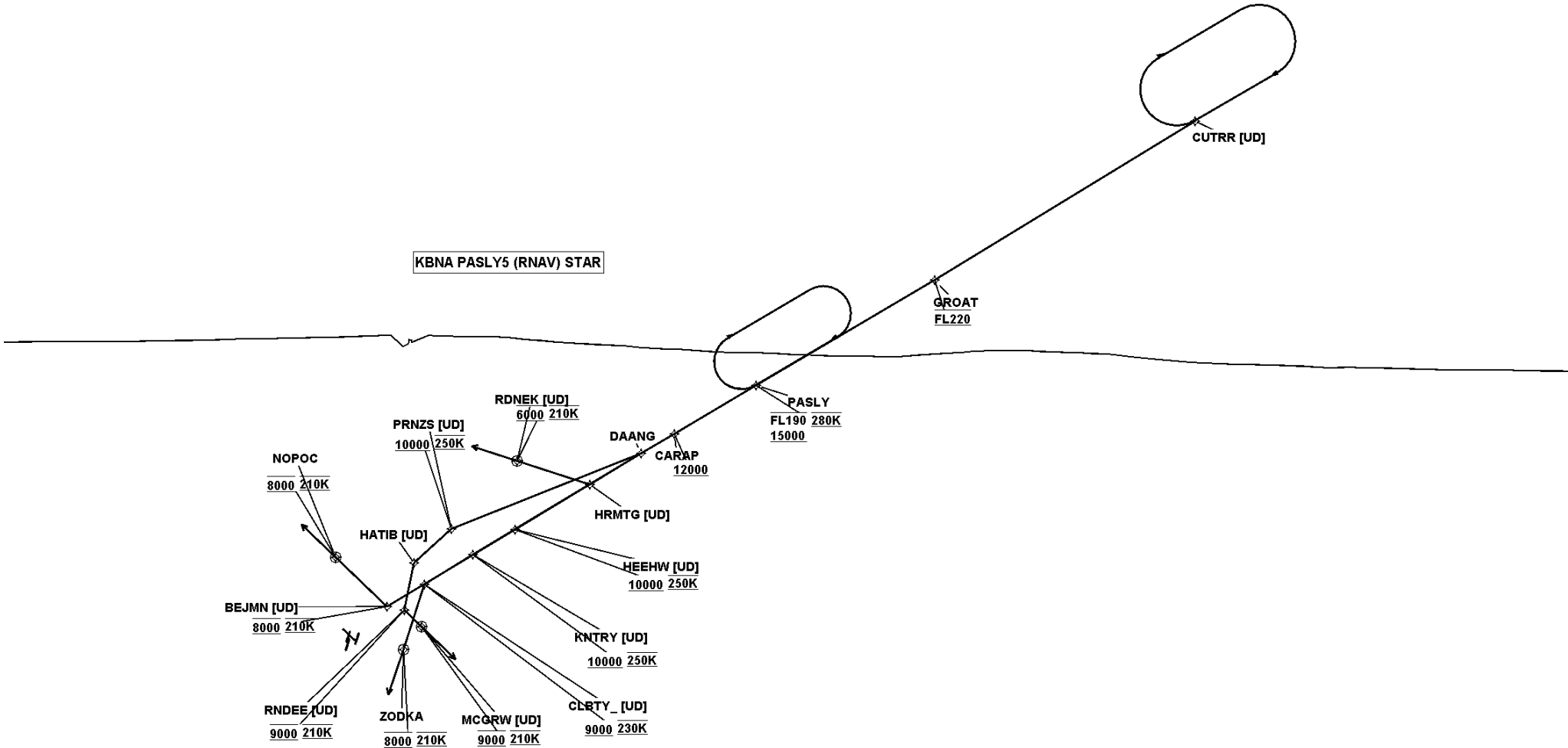
**REASONS:**

- 1-12. ATC REQUEST.
13. DOCUMENTED IAW 8260.19J 4-5-12(d)3(a).
14. MEA NO LONGER DOCUMENTED IN ARRIVAL ROUTE DESCRIPTION IAW 8260.19J 4-5-12(c).
- 15-19. REDUCED CHART CLUTTER.
20. ATC REQUEST.
21. MOCA VALUES ADDED IAW 8260.19J 4-5-12(b)8.
22. PBN REQUIREMENTS DOCUMENTED IAW 8260.19J 4-5-3(d)1.
23. RADAR REQUIRED DOCUMENTED IAW 8260.19J 4-5-12(d)2(b).
24. TERMINUS INFORMATION DOCUMENTED IAW 8260.19J 4-5-2(h)2.
25. IAW CURRENT DOCUMENTATION STANDARDS.
26. NO LONGER REQUIRED.
27. APPROACH CONTROL AND ATIS AUTOMATICALLY CHARTED AND DO NOT NEED TO BE DOCUMENTED IN THIS SECTION IAW 8260.19J 4-5-12(f).

FEDERAL AVIATION ADMINISTRATION  
FLIGHT STANDARDS SERVICE  
STANDARD TERMINAL ARRIVAL (STAR)

Bearings, headings, courses, tracks and radials are magnetic. Elevations and altitudes are in feet, MSL. Altitudes are minimum altitudes unless otherwise indicated.  
Ceilings are in feet above airport elevation. Distances are in nautical miles. Visibilities are in statute miles or feet RVR unless otherwise indicated.

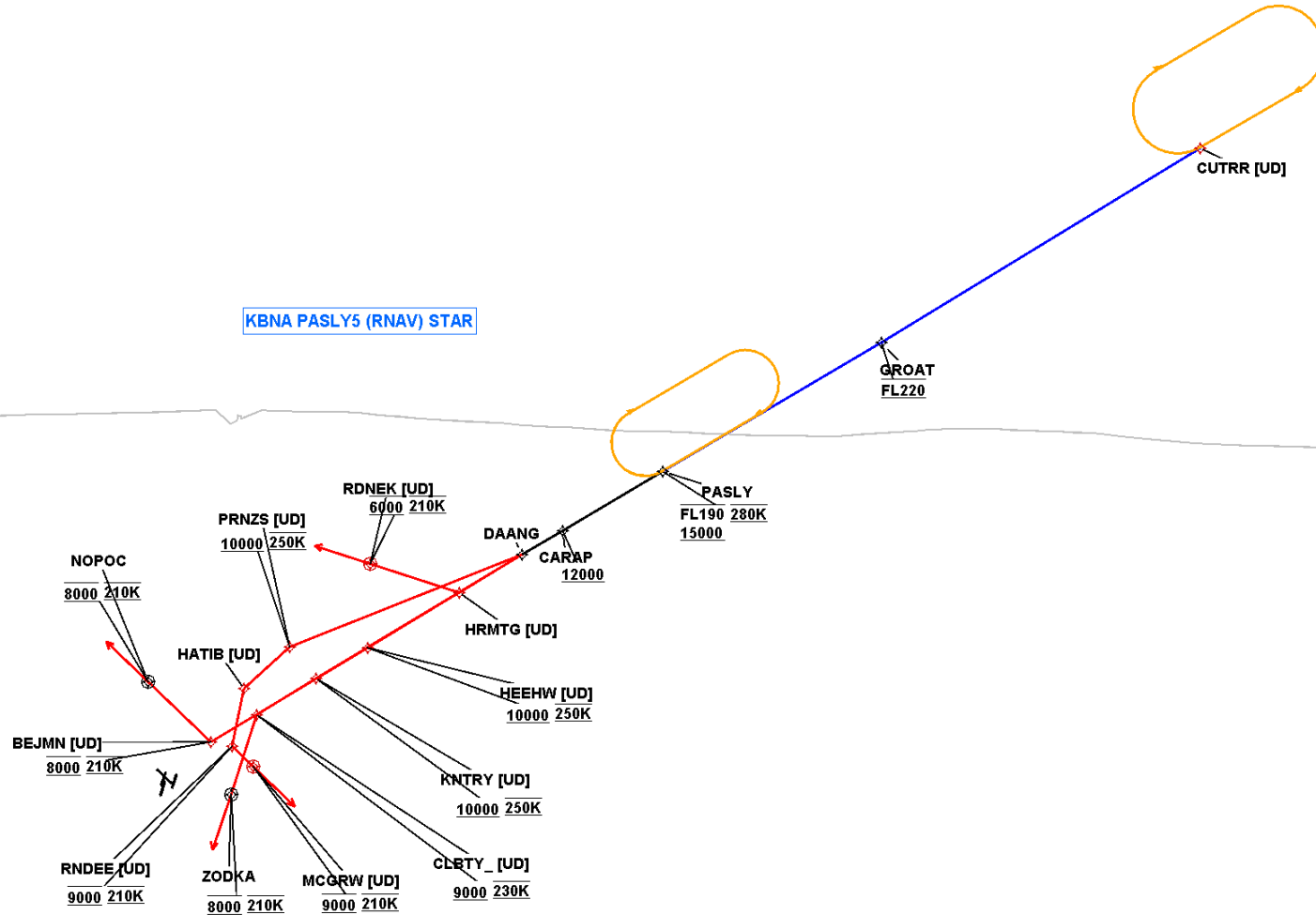
Arrival Name	Number	STAR Computer Code	Superseded Number	Dated	Effective Date
PASLY (RNAV)	FIVE	PASLY.PASLY5	FOUR	01/05/2017	
Graphic Depiction 1					



FEDERAL AVIATION ADMINISTRATION  
FLIGHT STANDARDS SERVICE  
STANDARD TERMINAL ARRIVAL (STAR)

Bearings, headings, courses, tracks and radials are magnetic. Elevations and altitudes are in feet, MSL. Altitudes are minimum altitudes unless otherwise indicated.  
Ceilings are in feet above airport elevation. Distances are in nautical miles. Visibilities are in statute miles or feet RVR unless otherwise indicated.

Arrival Name	Number	STAR Computer Code	Superseded Number	Dated	Effective Date
PASLY (RNAV)	FIVE	PASLY.PASLY5	FOUR	01/05/2017	
Graphic Depiction 2					



FEDERAL AVIATION ADMINISTRATION  
FLIGHT STANDARDS SERVICE  
STAR (DATA RECORD)

Arrival Name PASLY (RNAV)	Number FIVE		STAR Computer Code PASLY.PASLY5		Superseded Number FOUR		Dated 01/05/2017		Effective Date
FIX/NAVAID	LAT/LONG	C	FO/FB	LEG TYPE	TC	DIST (NM)	ALTITUDE	SPEED	REMARKS
En Route Transition									
CUTRR	370135.69N / 0845012.77W	Y		IF					CUTRR.PASLY5
GROAT	364456.69N / 0852417.65W	Y	FB	TF	238.86	32.00	AT FL220		
PASLY	363354.78N / 0854740.11W	Y	FB	TF	239.76	21.80	15000BFL190	AT 280K	
En Route Transition									
GROAT	364456.69N / 0852417.65W	Y		IF			AT FL220		GROAT.PASLY5
PASLY	363354.78N / 0854740.11W	Y	FB	TF	239.76	21.80	15000BFL190	AT 280K	
Common Route									
PASLY	363354.78N / 0854740.11W	Y		IF			15000BFL190	AT 280K	PASLY.PASLY5
CARAP	362849.62N / 0855821.34W	Y	FB	TF	239.53	10.00	AT/ABOVE 12000		
DAANG	362647.28N / 0860237.44W	Y	FB	TF	239.42	04.00			
Runway Transition									
DAANG	362647.28N / 0860237.44W	Y		IF					
KNTRY	361611.68N / 0862438.97W	Y	FB	TF	239.37	20.70	AT/ABOVE 10000	AT 250K	
CLBTY	361306.67N / 0863100.94W	Y	FB	TF	239.15	06.00	AT/ABOVE 9000	AT 230K	
ZODKA	360618.10N / 0863345.27W	Y	FO	TF	198.08	07.15	AT 8000	AT 210K	
KBNA:RWY 2C,RWY 2L,RWY 2R				FM	198.08				
Runway Transition									
DAANG	362647.28N / 0860237.44W	Y		IF					
HEEHW	361852.14N / 0861907.98W	Y	FB	TF	239.41	15.50	AT/ABOVE 10000	AT 250K	
BEJMN	361045.08N / 0863555.04W	Y	FB	TF	239.24	15.81	AT 8000	AT 210K	
NOPOC	361554.88N / 0864234.88W	Y	FO	TF	313.75	07.46	AT 8000	AT 210K	
KBNA:RWY 13				FM	313.75				

FEDERAL AVIATION ADMINISTRATION  
FLIGHT STANDARDS SERVICE  
STAR (DATA RECORD)

Arrival Name PASLY (RNAV)	Number FIVE		STAR Computer Code PASLY.PASLY5		Superseded Number FOUR		Dated 01/05/2017		Effective Date
<u>FIX/NAVAID</u>	<u>LAT/LONG</u>	<u>C</u>	<u>FO/FB</u>	<u>LEG TYPE</u>	<u>TC</u>	<u>DIST (NM)</u>	<u>ALTITUDE</u>	<u>SPEED</u>	<u>REMARKS</u>
Runway Transition									
DAANG	362647.28N / 0860237.44W	Y		IF					
HRMTG	362332.37N / 0860924.23W	Y	FB	TF	239.37	06.36			
RDNEK	362601.11N / 0861851.67W	Y	FO	TF	288.02	08.02	AT 6000	AT 210K	
KBNA:RWY 20C,RWY 20L,RWY 20R				FM	288.02				
Runway Transition									
DAANG	362647.28N / 0860237.44W	Y		IF					
PRNZS	361855.89N / 0862729.70W	Y	FB	TF	248.78	21.56	AT/ABOVE 10000	AT 250K	
HATIB	361523.43N / 0863220.48W	Y	FB	TF	227.96	05.28			
RNDDE	361024.53N / 0863338.25W	Y	FB	TF	191.91	05.08	AT 9000	AT 210K	
MCGRW	360841.59N / 0863123.36W	Y	FO	TF	133.25	02.50	AT 9000	AT 210K	
KBNA:RWY 31				FM	133.25				