

Flight Procedures Cover Page	Task Action: P-NOTAM	Task Type: IAP	Estimated Chart Date: 05/14/2026	APWS Task ID: 70977BC2F68143FAA16FBDE9251E866D	APWS Project ID: EBDA212B115540E2A6893E91AF806F39
Procedure: RNAV (GPS) RWY 8 AMDT 2E		Enroute: NO	Specialist: Dunn, Timothy		Agreement Number:
Airport ID: KOGA			Airport City: OGALLALA		State: NE
Facility ID:	Facility Type:	Flight Inspection Remark Type:			

Procedure Comments:

PROCESSED IAW TECHNICAL SUPPORT GROUP (AJF-17) MEMO DATED 07/07/2021 GUIDANCE FOR PROCEDURAL CHANGES REQUIRING FLIGHT INSPECTION/VALIDATION.

!FDC 5/0782 OGA IAP SEARLE FLD, OGALLALA, NE. RNAV (GPS) RWY 8, AMDT 2D... ALTERNATE MINS: CAT A, B 800-2 1/4, NA WHEN LOCAL WEATHER NOT AVAILABLE. PBN REQUIREMENTS NOTE: RNP APCH - GPS. CHANGE NOTE TO READ: BARO-VNAV NA WHEN USING IML ALTIMETER SETTING. CHANGE NOTE TO READ: WHEN LOCAL ALTIMETER SETTING NOT RECEIVED, USE IML ALTIMETER SETTING AND INCREASE ALL DA 86 FEET AND ALL MDA 100 FEET, INCREASE LPV ALL CATS VISIBILITY 1/8 SM, LNAV/VNAV ALL CATS AND CIRCLING CAT B VISIBILITY 1/4 SM. DELETE PROFILE NOTE: *LNAV ONLY. DELETE ASTERISK FROM MINIMUM ALTITUDE AT YEYUC/2.90 NM TO RW08 4200. THIS IS RNAV (GPS) RWY 8, AMDT 2E. 2510141632-PERM.

Contact Robert Hamilton 405-954-4608.





OGALLALA, NEBRASKA

AL-6070 (FAA)

21 280

WAAS CH 57903 W08A	APP CRS 083°	Rwy Idg TDZE Apt Elev	5102 3260 3279
--	------------------------	-----------------------------	---

RNAV (GPS) RWY 8

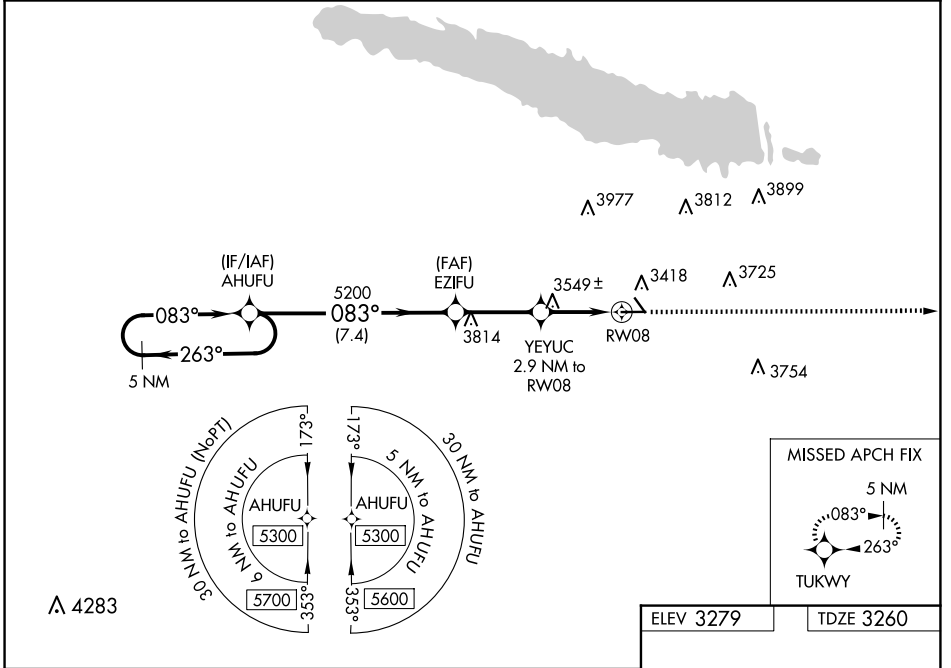
SEARLE FLD (OGA)

RNP APCH.

⚠ For uncompensated Baro-VNAV systems, LNAV/VNAV NA below -21°C or above 54°C. When local altimeter setting not received, use Imperial altimeter setting and increase all DA 86 feet and all MDA 100 feet, increase LPV all Cats visibility 1/8 SM, LNAV/VNAV all Cats and Circling Cat B visibility 1/4 SM. Baro-VNAV NA when using Imperial altimeter setting.

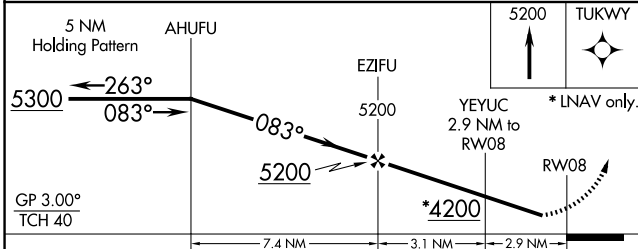
MISSED APPROACH:
Climb to 5200 direct TUKWY and hold.

AWOS-3 121.275	DENVER CENTER 132.7 397.85	UNICOM 122.8 (CTAF) 0
--------------------------	--------------------------------------	---------------------------------

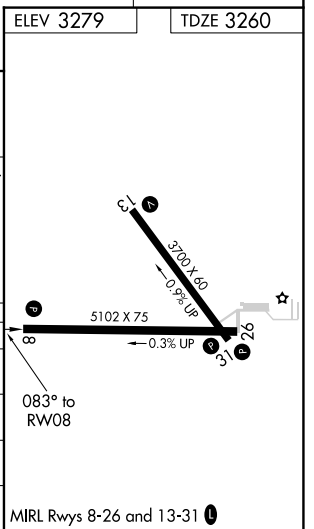


NC-2, 02 OCT 2025 to 30 OCT 2025

NC-2, 02 OCT 2025 to 30 OCT 2025



CATEGORY	A	B	C	D
LPV DA	3510-1	250 (300-1)		NA
LNAV/VNAV DA	3865-2¼	605 (600-2¼)		NA
LNAV MDA	3800-1	540 (600-1)		NA
CIRCLING	3940-1 661 (700-1)	4000-1 721 (800-1)		NA



OGALLALA, NEBRASKA
Amdt 2D 07OCT21

41°07'N-101°46'W

RNAV (GPS) RWY 8

SEARLE FLD (OGA)