

DUBOIS, WYOMING

AL-10397

FIG

WAAS CH 70447 W29A	APP CRS 286°	Rwy Idg TDZE Apt Elev	6700 7252 7299
--	------------------------	-----------------------------	---

RNAV (GPS) RWY 29

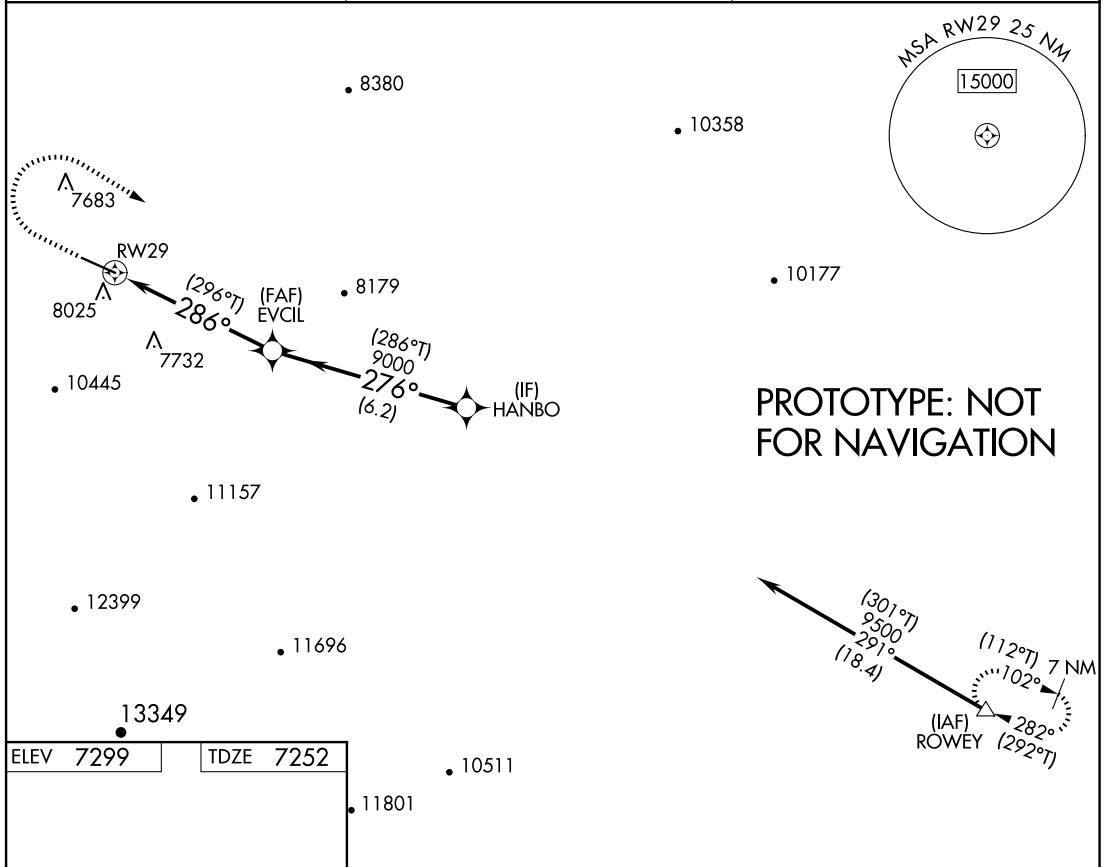
DUBOIS MUNI(DUB)

RNP APCH - GPS.

▼ When local altimeter setting not received, procedure NA.
 ▲ Rwy 29 helicopter visibility reduction below 3/4 SM NA.
 Circling NA south of Rws 11-29.

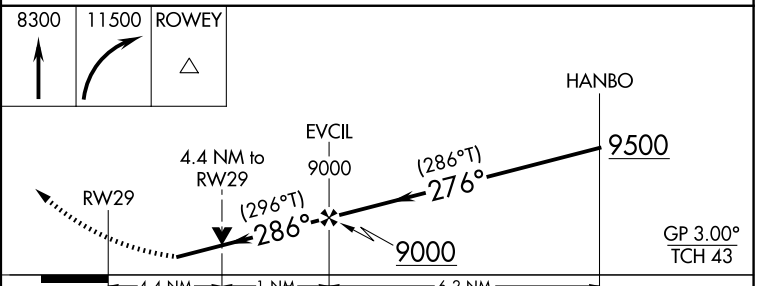
MISSED APPROACH: Climb to 8300 direct then climbing right turn to 11500 direct ROWEY and hold. *Missed approach requires minimum climb of 300 feet per NM to 9100.

AWOS-3 118.275	SALT LAKE CITY CENTER XXX.X XXX.X	UNICOM 122.9 (CTAF) 0
--------------------------	---	---------------------------------



PROTOTYPE: NOT FOR NAVIGATION

ELEV 7299	TDZE 7252
-----------	-----------



CATEGORY	A	B	C	D
LPV DA*	8020-2½ 768 (800-2½)			NA
LNAV MDA*	8700-1¼ 1448 (1500-1¼)			NA
CIRCLING	8700-1¼ 1401 (1500-1¼)	8700-1½ 1401 (1500-1½)	8800-3 1501 (1600-3)	NA

AUTOMATED AL-10397 RNAV (GPS) RWY 29

NW-1
 1 NOV 2024
 COMPILER: CG
 REVIEWER:
 DBL CHKR:
 EFF: FIG

DUBOIS, WYOMING
 Orig FIG

43°33'N-109°41'W

DUBOIS MUNI(DUB)
 RNAV (GPS) RWY 29