

Flight Procedures Cover Page	Task Action: FLIGHT CHECK	Task Type: IAP	Estimated Chart Date: 02/20/2025	APWS Task ID: 71ADAF3F13404DF2BFE9163B56821C02	APWS Project ID: 6B805B117F34456C8264941AD0FC8E8F
Procedure: RNAV (GPS) RWY 29 ORIG	Enroute: NO	Specialist: Taylor, Jantzen	Agreement Number:		
Airport ID: KDUB	Airport City: DUBOIS	State: WY			
Facility ID:	Facility Type:	Flight Inspection Remark Type: New FC Slot			

Procedure Comments:  
 ORIGINAL PROCEDURE  
 PENDING DATA USED FOR AIRPORT AND RUNWAY  
 CONTACT RAKE MCGRAW: AJV-A422: 405.954.8711

12/16/24: THIS IS AN UPDATED COPY OF THE FORM DEVELOPED ON 7/25/24.

1. FAS DATA: CHANGED CRC REMAINDER FROM 65AD2234 TO 2C5EC7EA, LTP/FTP ELLIPSOIDAL HEIGHT CHANGED FROM +21989 TO +21984 - UPDATED AIRNAV RUNWAY DATA.
2. CHANGED REQUIRED EFFECTIVE DATE FROM ROUTINE TO 02/20/2025

QUALITY  
20  
CHECKED

QUALITY  
16  
CHECKED

QUALITY  
41  
CHECKED

## FIPC BASIC FORM

<b>PROCEDURE:</b> RNAV (GPS) RWY 29 ORIG		<b>AIRPORT NAME:</b> DUBOIS MUNI		<b>AIRPORT ID:</b> KDUB	<b>SPECIAL CONTROL NO:</b> SG-11-164-24
<b>FAC ID:</b> KDUB29		<b>CITY:</b> DUBOIS		<b>ST:</b> WY	<b>ORIG CHART DATE:</b> 02/20/2025
<b>DFL TYPE:</b> PROC/S	<b>THIRD PARTY:</b> <input type="checkbox"/> YES	<b>EST. TIME ON SITE:</b> 0.4	<b>REIMB. NUMBER:</b> AC0598	<b>PTS TASK ID:</b> 71ADAF3F13404DF2BFE9163B56821C02	

### PREFLIGHT NOTES

<b>REVIEWER:</b> james krenek			<b>DATE:</b> 12/12/2024				
<b>COMMENTS:</b> Rwy 29 FAS data is incoirrect for FTP ellipsoid height per Flight Operations Team technical support.			<b>CHECK ONE:</b>				
			<input type="checkbox"/> FLT CK REQ <input type="checkbox"/> NFCR <input checked="" type="checkbox"/> REJECT			YES	NO
			<b>CPV COMPLETE?</b>			X	

### PROCEDURE RESULTS

<b>INSPECTION DATE:</b> 12/12/2024	<b>CREW #:</b> VN282	<b>N #:</b> N76	<b>INSTRUMENT PROCEDURE STATUS:</b> <input type="checkbox"/> SAT <input type="checkbox"/> SAT W/CHANGES <input checked="" type="checkbox"/> UNSAT		<b>ARINC CODING:</b> <input type="checkbox"/> SAT <input type="checkbox"/> SAT/GOLD <input checked="" type="checkbox"/> UNSAT	
<b>FLIGHT INSPECTOR SIGNATURE:</b> james krenek @ 12/12/2024 18:40			<b>PRINTED NAME:</b> KRENEK, JAMES LEROY			<b>NOTAM INITIATED?</b> <input type="checkbox"/> YES <input checked="" type="checkbox"/> NO

**FLIGHT INSPECTOR REMARKS:**  
Rwy 29 FAS data is incoirrect for FTP ellipsoid height per Flight Operations Team technical support.

### IN-FLIGHT OBSTACLE REPORT

<b>OBSTRUCTION ID #:</b>	<b>COORDINATES OR LOCATION:</b>	<b>GNSS ALTITUDE (MSL):</b>	<b>BAROMETRIC ALTITUDE (MSL):</b>	<b>HEIGHT ABOVE GROUND LEVEL:</b>
--------------------------	---------------------------------	-----------------------------	-----------------------------------	-----------------------------------

DUBOIS, WYOMING

AL-10397

FIG

WAAS CH <b>70447</b> <b>W29A</b>	APP CRS <b>286°</b>	Rwy Idg TDZE Apt Elev	<b>6700</b> <b>7252</b> <b>7299</b>
--	------------------------	-----------------------------	---

# RNAV (GPS) RWY 29

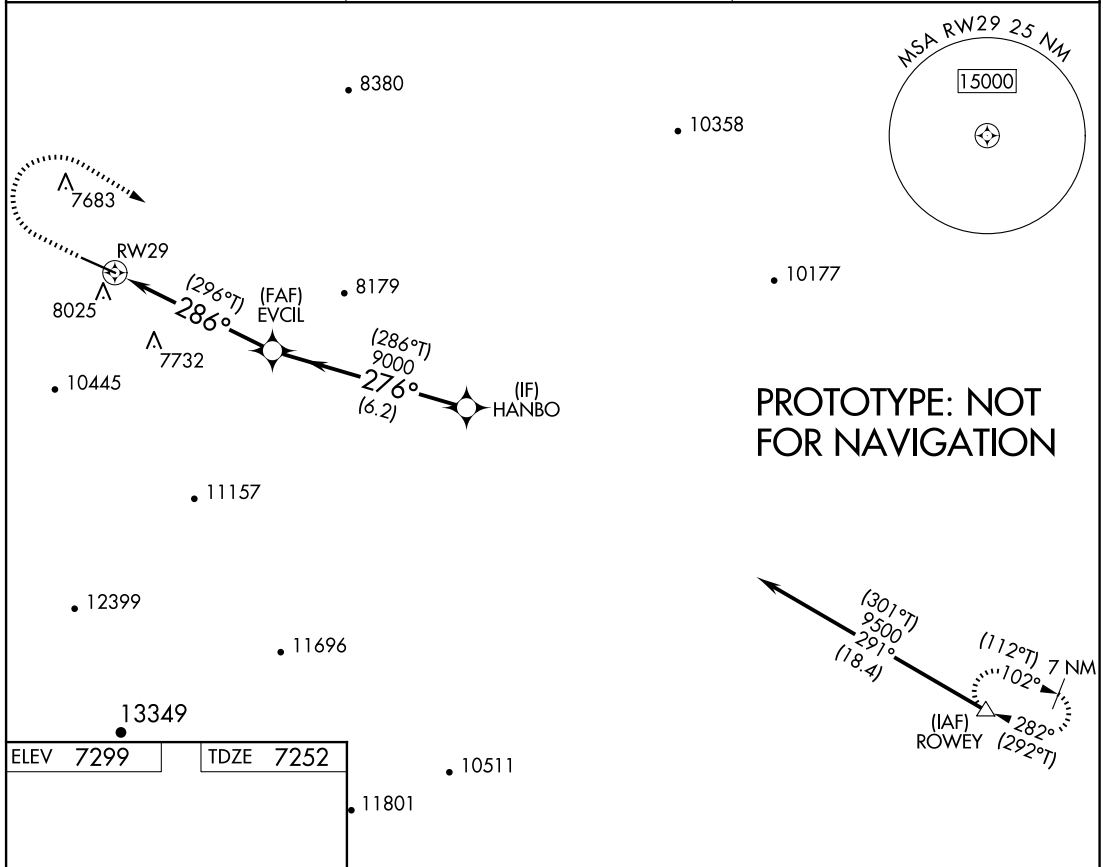
DUBOIS MUNI(DUB)

RNP APCH - GPS.

▼ When local altimeter setting not received, procedure NA.  
 ▲ Rwy 29 helicopter visibility reduction below 3/4 SM NA.  
 Circling NA south of Rws 11-29.

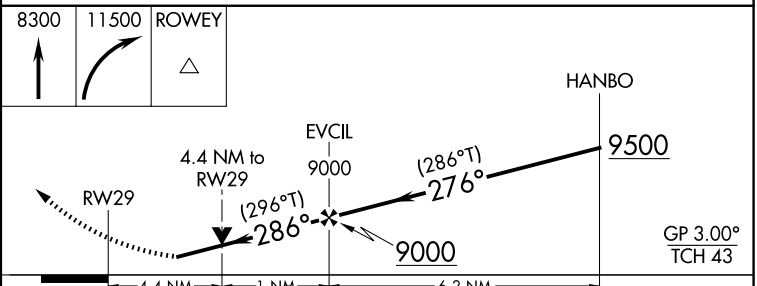
MISSED APPROACH: Climb to 8300 direct then climbing right turn to 11500 direct ROWEY and hold. \*Missed approach requires minimum climb of 300 feet per NM to 9100.

AWOS-3 <b>118.275</b>	SALT LAKE CITY CENTER <b>XXX.X XXX.X</b>	UNICOM <b>122.9 (CTAF) 0</b>
--------------------------	---	---------------------------------



PROTOTYPE: NOT FOR NAVIGATION

ELEV 7299	TDZE 7252
-----------	-----------



CATEGORY	A	B	C	D
LPV DA*	8020-2½ 768 (800-2½)			NA
LNAV MDA*	8700-1¼ 1448 (1500-1¼)			NA
<input checked="" type="checkbox"/> CIRCLING	8700-1¼ 1401 (1500-1¼)	8700-1½ 1401 (1500-1½)	8800-3 1501 (1600-3)	NA

AUTOMATED AL-10397 RNAV (GPS) RWY 29

NW-1  
 1 NOV 2024  
 COMPILER: CG  
 REVIEWER:  
 DBL CHKR:  
 EFF: FIG

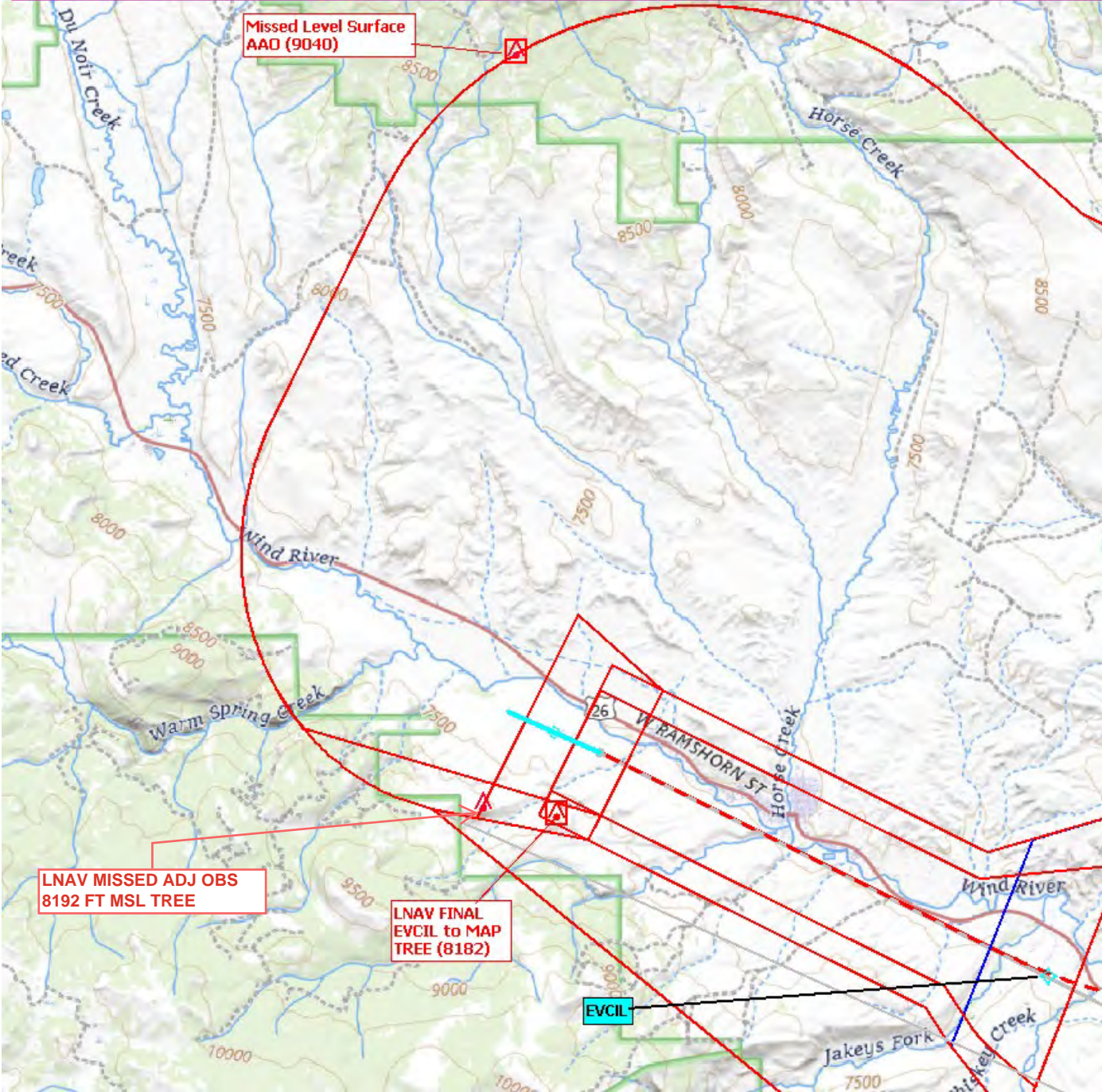
DUBOIS, WYOMING  
 Orig FIG

43°33'N-109°41'W

DUBOIS MUNI(DUB)  
**RNAV (GPS) RWY 29**



DUBOIS MUNI AIRPORT (KDUB)  
DUBOIS, WY.  
RNAV (GPS) RWY 29 ORIG  
LNAV FINAL AND MISSED  
120K TO SHOW MISSED LVL SFC OBS



Misssed Level Surface  
AAD (9040)

LNAV MISSED ADJ OBS  
8192 FT MSL TREE

LNAV FINAL  
EVCIL to MAP  
TREE (8182)

EVCIL

FREMONT COUNTY





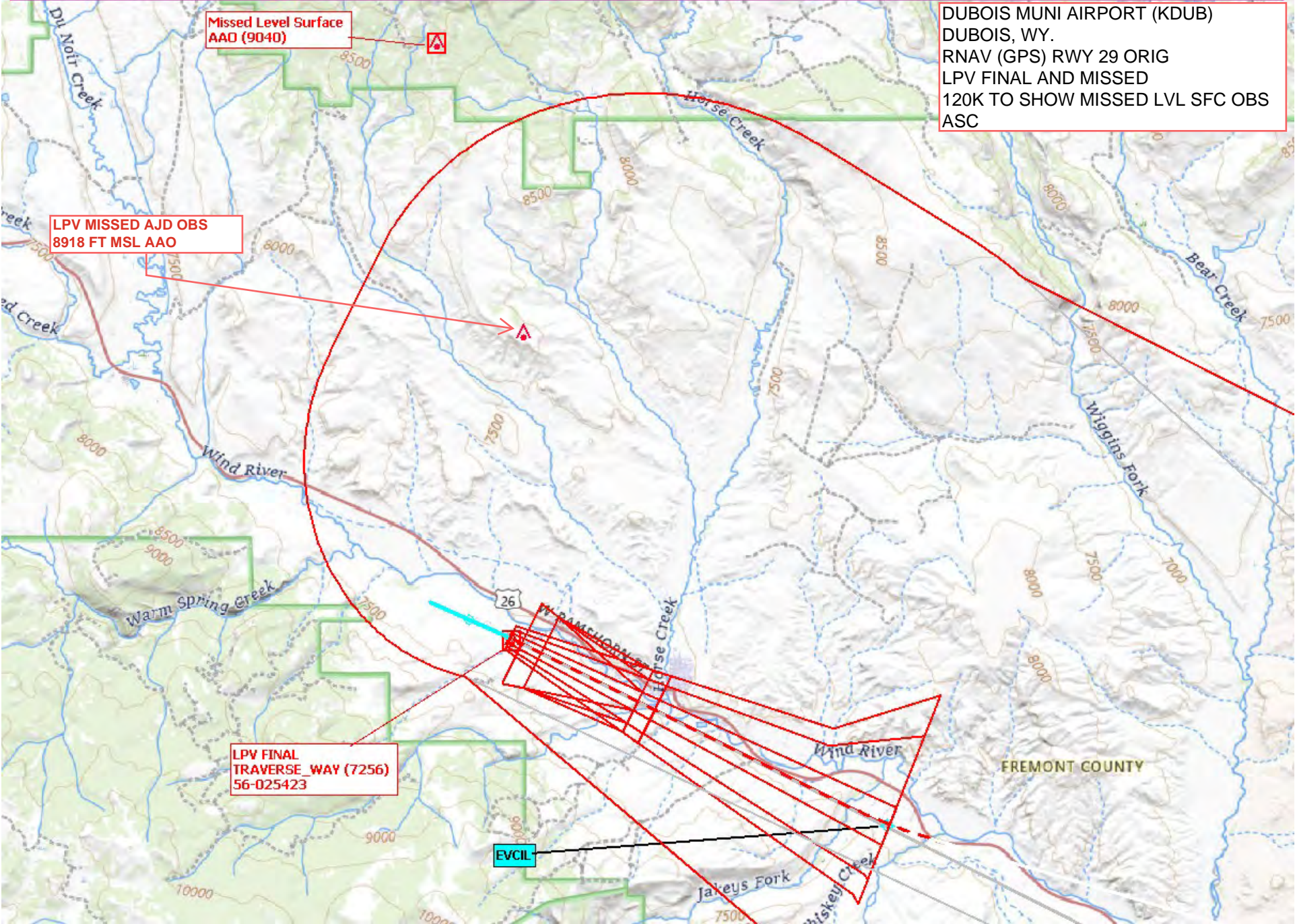
DUBOIS MUNI AIRPORT (KDUB)  
DUBOIS, WY.  
RNAV (GPS) RWY 29 ORIG  
LPV FINAL AND MISSED  
120K TO SHOW MISSED LVL SFC OBS  
ASC

MISSED LEVEL SURFACE  
AAO (9040)

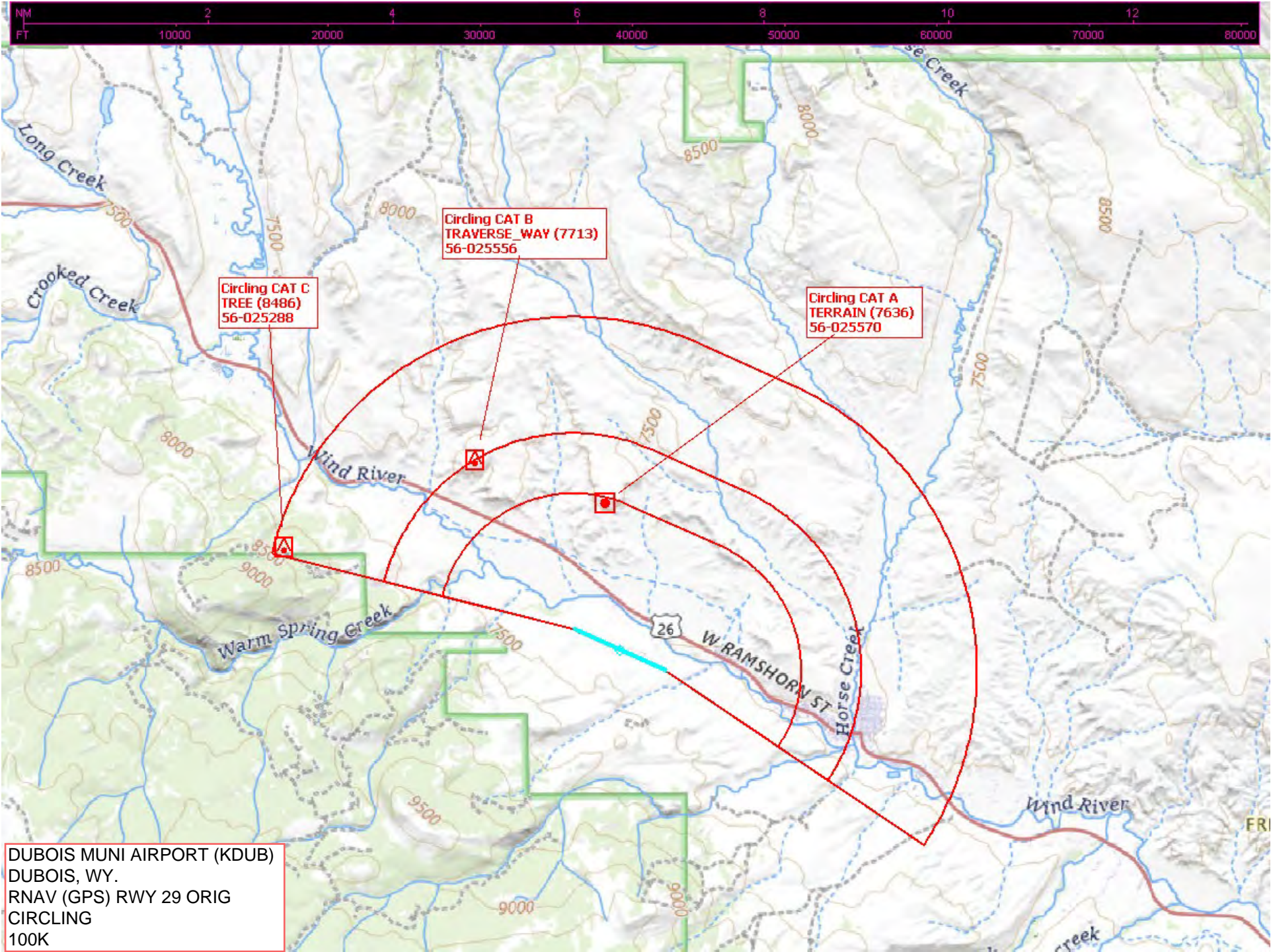
LPV MISSED AJD OBS  
8918 FT MSL AAO

LPV FINAL  
TRAVERSE WAY (7256)  
56-025423

EVCIL







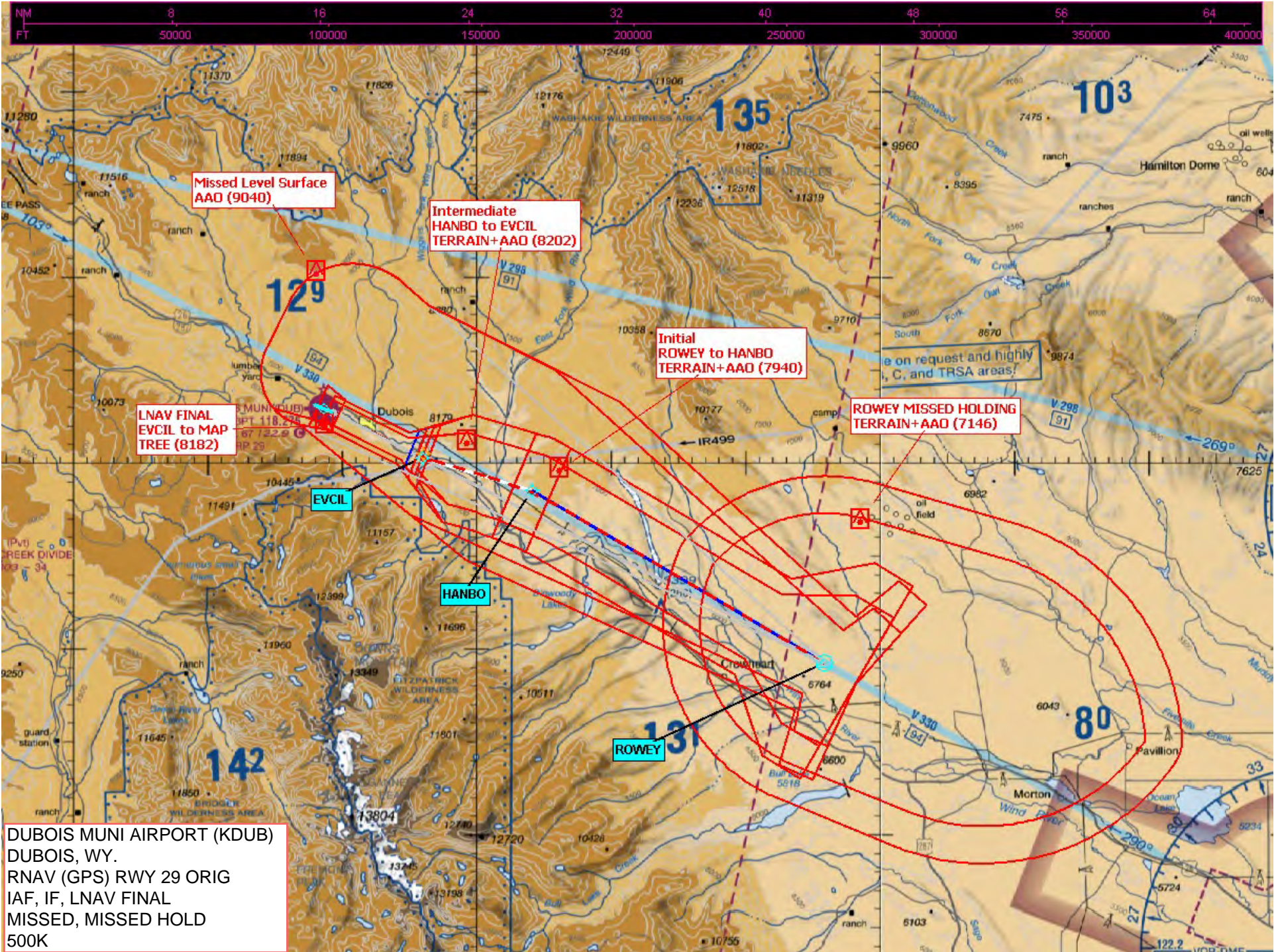
Circling CAT B  
TRAVERSE\_WAY (7713)  
56-025556

Circling CAT C  
TREE (8486)  
56-025288

Circling CAT A  
TERRAIN (7636)  
56-025570

DUBOIS MUNI AIRPORT (KDUB)  
DUBOIS, WY.  
RNAV (GPS) RWY 29 ORIG  
CIRCLING  
100K





DUBOIS MUNI AIRPORT (KDUB)  
 DUBOIS, WY.  
 RNAV (GPS) RWY 29 ORIG  
 IAF, IF, LNAV FINAL  
 MISSED, MISSED HOLD  
 500K