

LINCOLN, NEBRASKA

AL-232 (FAA)

FIG

WAAS CH 40137 W17A	APP CRS 177°	Rwy Ldg TDZE Apt Elev	5400 1219 1219
--	------------------------	-----------------------------	---

RNAV (GPS) RWY 17

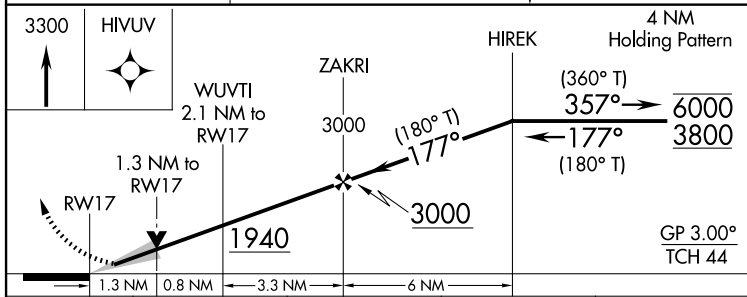
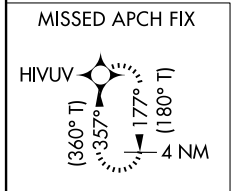
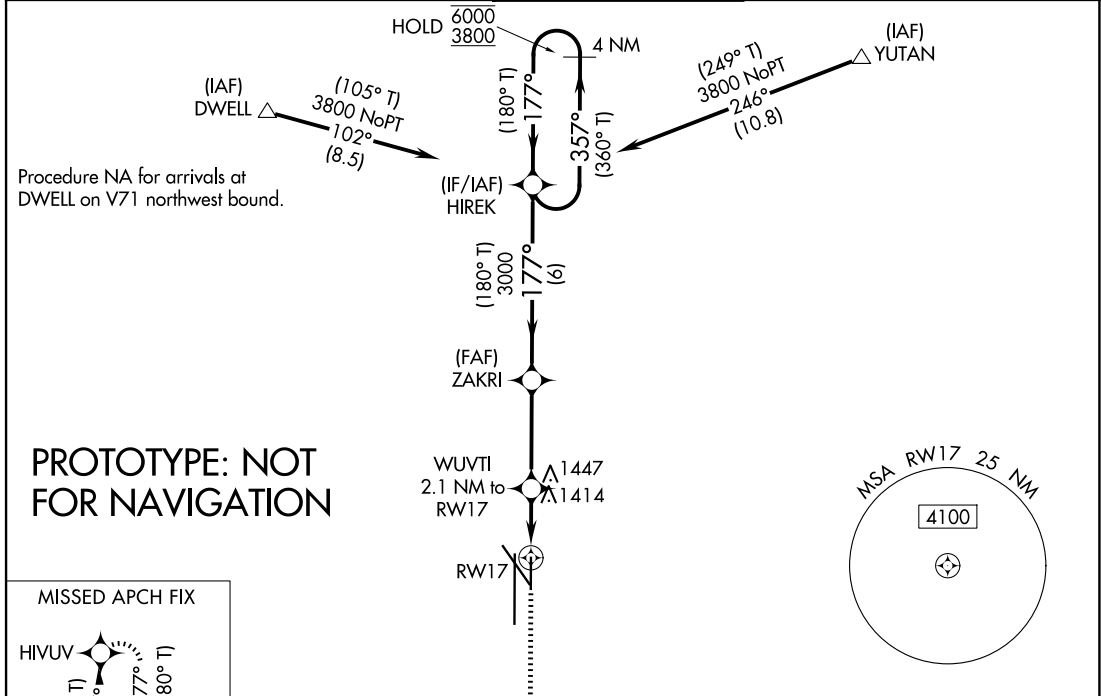
LINCOLN (L.NK)

RNP APCH - GPS.

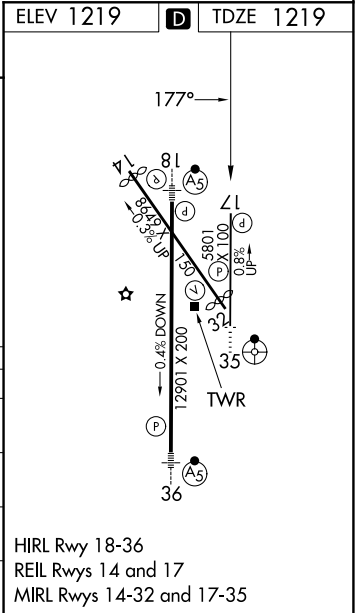
Baro-VNAV and VDP NA when using BIE altimeter setting. For uncompensated Baro-VNAV systems, LNAV/VNAV NA below -22°C or above 54°C. When local altimeter setting not received, use BIE altimeter setting and increase all LPV DA to 1510 feet and all visibilities 1/8 SM; increase LNAV/VNAV DA to 1726 feet and all visibilities 1/4 SM; increase all MDAs 100 feet and visibility Cats C and D 1/4 SM.

MISSED APPROACH: Climb to 3300 direct HIVUV and hold.

ATIS 118.05 290.9	OMAHA APP CON 124.0 270.3	LINCOLN TOWER* 118.5(CTAF) 253.5	GND CON 121.9 275.8	UNICOM 122.95
-----------------------------	-------------------------------------	--	-------------------------------	-------------------------



CATEGORY	A	B	C	D
LPV DA	1419-3/4		200 (200-3/4)	
LNAV/VNAV DA	1635-1/8		416 (500-1/8)	
LNAV MDA	1680-1 461 (500-1)		1680-1 3/8 461 (500-1 3/8)	
CIRCLING	1680-1 461 (500-1)	1760-1 541 (600-1)	1820-1 3/4 601 (700-1 3/4)	1960-2 1/2 741 (800-2 1/2)



HIRL Rwy 18-36
REIL Rwy 14 and 17
MIRL Rwy 14-32 and 17-35

AUTOMATED AL-232 RNAV (GPS) RWY 17

NC-2
30 JAN 2026
COMPILER: CG
REVIEWER:
DBL CHKR:
EFF: FIG

LINCOLN, NEBRASKA
Amdt 1 FIG

40°51'N-96°46'W

RNAV (GPS) RWY 17

LINCOLN (L.NK)