

Flight Procedures Cover Page	Task Action: Cancellation	Task Type: IAP	Estimated Chart Date: 05/14/2026	APWS Task ID: 72A0D926570746D3BCC33EFF41A27362	APWS Project ID: C22E60DA82B74BB6B4B63B938692687A
Procedure: VOR RWY 18 AMDT 3		Enroute: NO	Specialist: Bruno, John		Agreement Number:
Airport ID: 13K			Airport City: EUREKA		State: KS
Facility ID:	Facility Type:	Flight Inspection Remark Type:			

Procedure Comments:
 CANCELLED IAW IOAA.
 Contact Casimir Tabaka AJV-432A 405-202-7857.



VORTAC EMP 112.8 Chan 75	APP CRS 187°	Rwy Idg 3504 TDZE 1207 Apt Elev 1208
--	------------------------	---



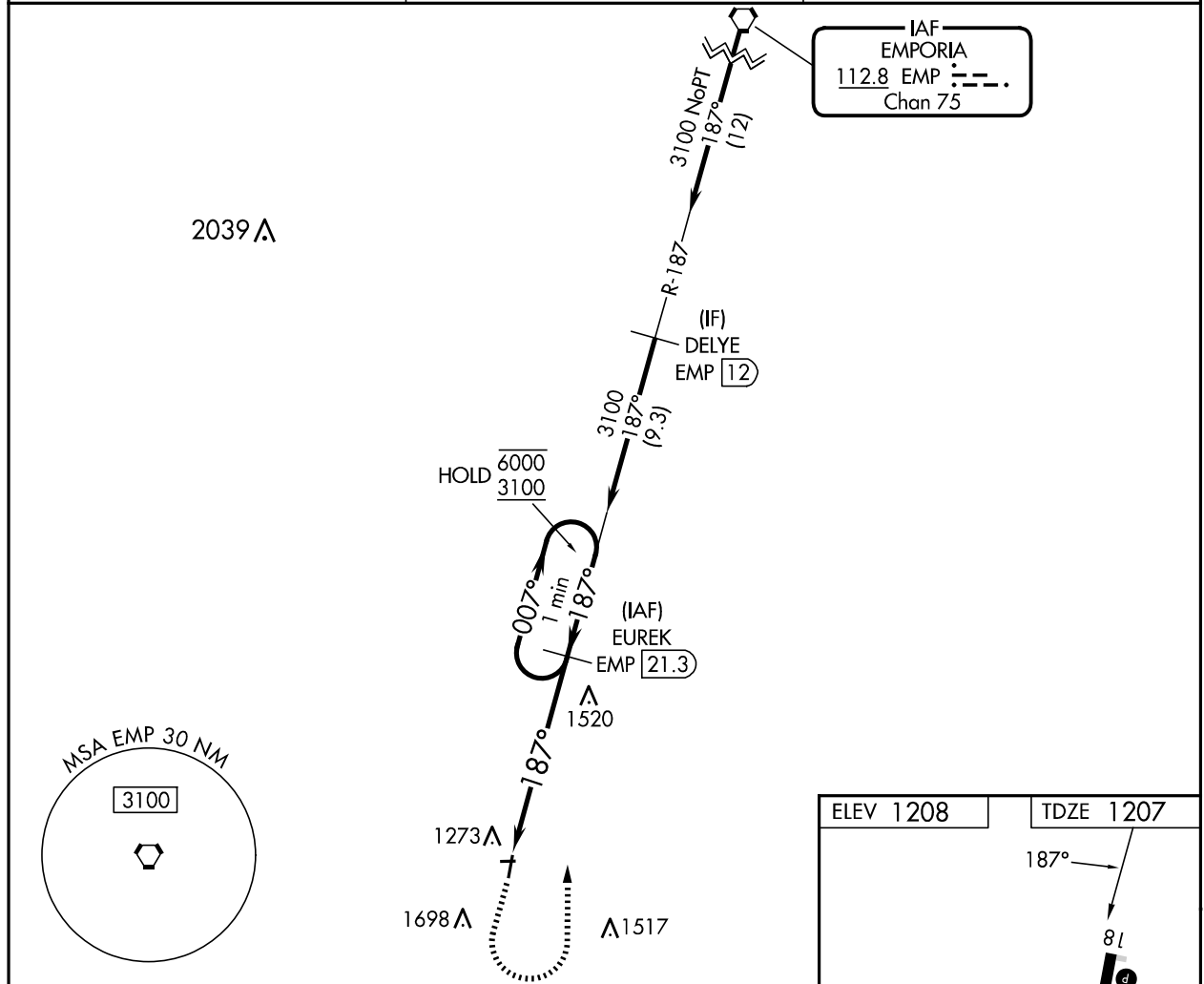
VOR RWY 18
LT WILLIAM M MILLIKEN (13K)

DME required.

▼ Circling NA to Rwy 8 and 26. When local altimeter setting not received, use Emporia altimeter setting: increase all MDAs 80 feet and S-18 Cat C visibility ¼ SM, Circling Cat C visibility ¼ SM.

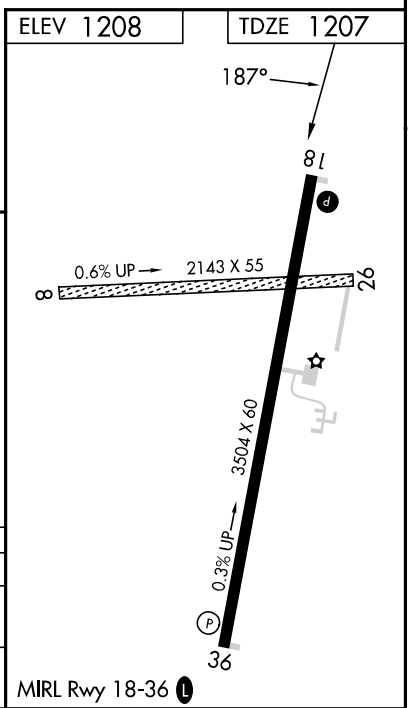
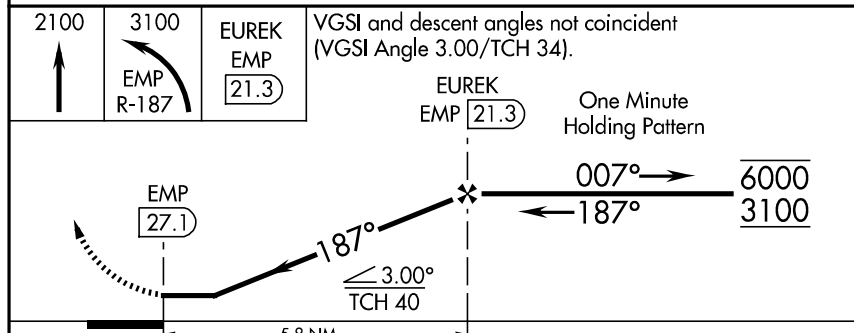
MISSED APPROACH: Climb to 2100 then climbing left turn to 3100 on EMP R-187 to EUREK/21.3 DME and hold.

AWOS-3PT 120.975	KANSAS CITY CENTER 120.2 323.2	UNICOM 122.8 (CTAF)
----------------------------	--	-------------------------------



NC-2, 02 OCT 2025 to 30 OCT 2025

NC-2, 02 OCT 2025 to 30 OCT 2025



CATEGORY	A	B	C	D
S-18	1820-1 613 (700-1)		1820-1¾ 613 (700-1¾)	NA
CIRCLING	1820-1 612 (700-1)		2060-2½ 852 (900-2½)	NA