

Flight Procedures Cover Page	Task Action: P-NOTAM	Task Type: IAP	Estimated Chart Date: 07/09/2026	APWS Task ID: 751675B8DD61459DA88BC480106AA607	APWS Project ID: 37C828AEF07B429F84E931273512774E
Procedure: RNAV (GPS) Y RWY 26 ORIG-B		Enroute: NO	Specialist: Johnson, Timothy		Agreement Number:
Airport ID: KCMA			Airport City: CAMARILLO		State: CA
Facility ID:	Facility Type:	Flight Inspection Remark Type:			

**Procedure Comments:**

Visibility Initiative (Garmin) - Update IAP visibility minimums IAW Order 8260.3, Chapter 3, Section 3-3. Visibility Minimums.

PROCESSED IAW TECHNICAL SUPPORT GROUP (AJF-17) MEMO DATED 07/07/2021, SUBJECT: GUIDANCE FOR PROCEDURAL CHANGES REQUIRING FLIGHT INSPECTION/VALIDATION.

CONTACT: CASEY HILL (405) 954-0624.



APP CRS	Rwy Ldg	<b>6013</b>
<b>252°</b>	TDZE	<b>77</b>
	Apt Elev	<b>77</b>

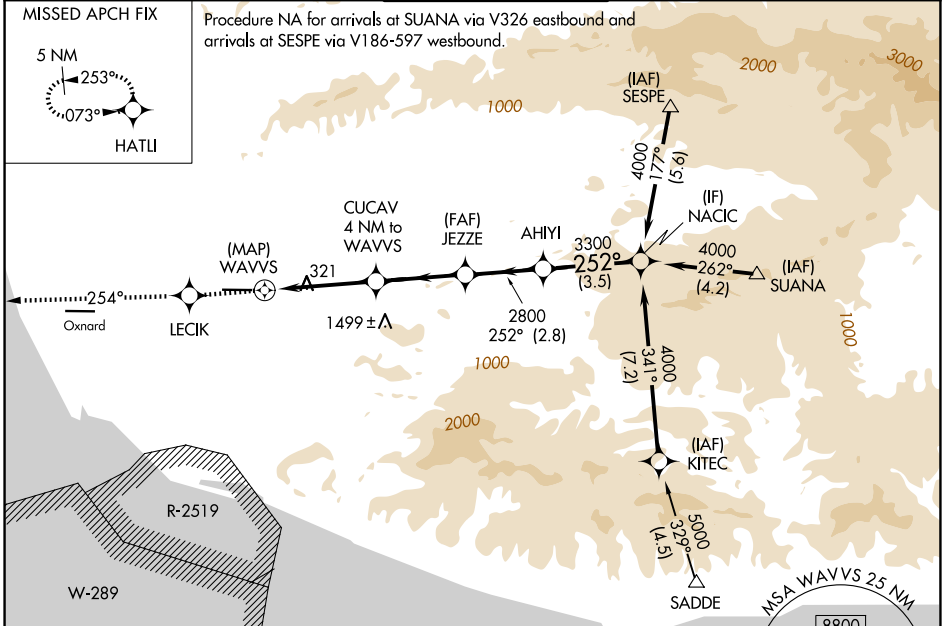
# RNAV (GPS) Y RWY 26

CAMARILLO (CMA)

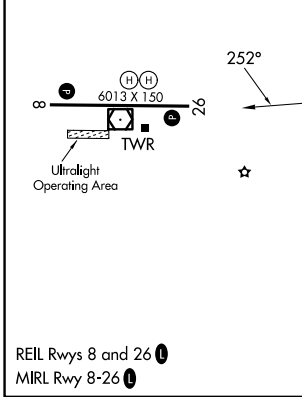
**⚠** Circling NA north of Rwy 8-26. DME/DME RNP-0.3 NA.  
**⚠** If local altimeter setting not received, use Oxnard altimeter setting and increase all MDAs 20 feet. VDP NA when using Oxnard altimeter setting.

MISSED APPROACH: Climb to 3000 direct LECIK and via 254° track to HATLI and hold.

ATIS <b>126.025</b>	POINT MUGU APP CON * <b>124.7 335.5</b>	CAMARILLO TOWER * <b>128.2 (CTAF) 0 269.4</b>	GND CON <b>121.8</b>	UNICOM <b>122.95</b>
------------------------	--	--	-------------------------	-------------------------



ELEV 77	TDZE 77
---------	---------



VGSI and descent angles not coincident (VGSI Angle 3.00/TCH 48).

CATEGORY	A	B	C	D
LNAV MDA	620-1	543 (600-1)	620-1½ 543 (600-1½)	620-1¾ 543 (600-1¾)
CIRCLING	620-1	543 (600-1)	640-1½ 563 (600-1½)	1100-3 1023 (1100-3)