

Flight Procedures Cover Page	Task Action: P-NOTAM	Task Type: IAP	Estimated Chart Date: 05/14/2026	APWS Task ID: 75E050B9B3F840A39A93CE5D81BD551A	APWS Project ID: C5E646512AB14862863E0F4C57ADE82B
Procedure: RNAV (GPS) RWY 3 AMDT 1C		Enroute: NO	Specialist: Johnson, Timothy		Agreement Number:
Airport ID: 25M			Airport City: RIPLEY		State: MS
Facility ID:	Facility Type:	Flight Inspection Remark Type:			

Procedure Comments:

Visibility Initiative (Garmin) - Update IAP visibility minimums IAW Order 8260.3, Chapter 3, Section 3-3. Visibility Minimums.

PROCESSED IAW TECHNICAL SUPPORT GROUP (AJF-17) MEMO DATED 07/07/2021, SUBJECT: GUIDANCE FOR PROCEDURAL CHANGES REQUIRING FLIGHT INSPECTION/VALIDATION.

CONTACT: CASEY HILL (405) 954-0624.



OLD

RIPLEY, MISSISSIPPI

AL-6339 (FAA)

19283

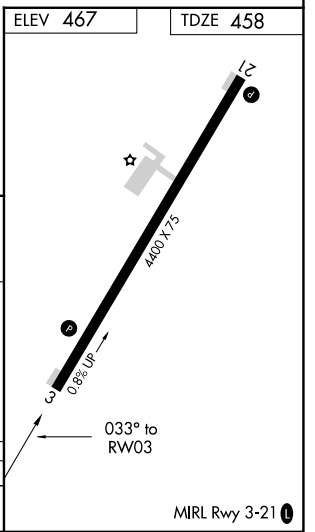
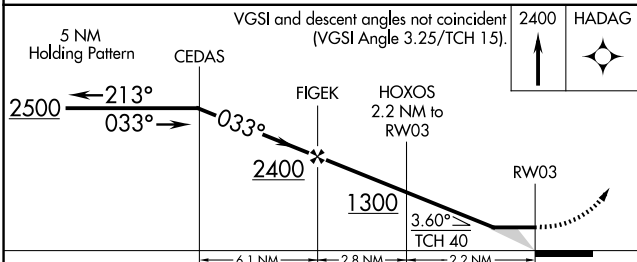
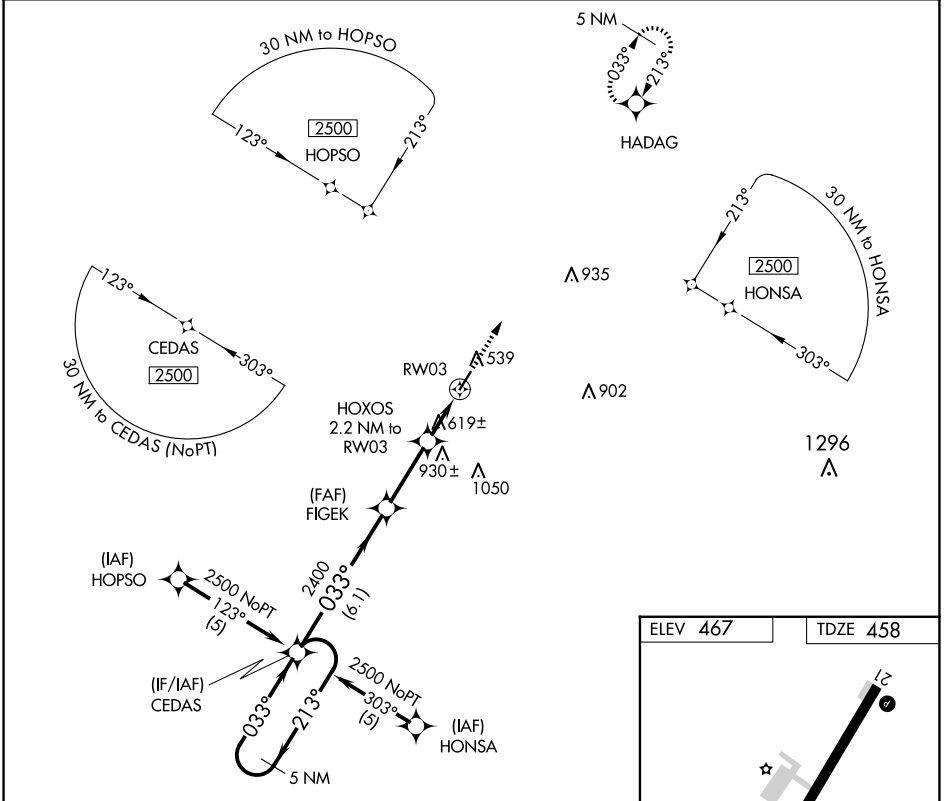
APP CRS	Rwy Idg	4400
033°	TDZE	458
	Apt Elev	467

RNAV (GPS) RWY 3

RIPLEY (25M)

RNP APCH.	<p>Use Corinth altimeter setting, when not received use Tupelo altimeter setting and increase all MDA 40 feet, and increase LNAV Cat C visibility ¼ mile. Procedure NA at night. Rwy 3 helicopter visibility reduction below 1 SM NA.</p>	MISSED APPROACH: Climb to 2400 direct HADAG and hold.
-----------	---	---

CRX AWOS-3PT 118.675	MEMPHIS CENTER 135.9 260.6	UNICOM 122.8 (CTAF) 0
--------------------------------	--------------------------------------	---------------------------------



CATEGORY	A	B	C	D
LNAV MDA	940-1	482 (500-1)	940-1¼ 482 (500-1¼)	NA

RIPLEY, MISSISSIPPI
Amdt 1B 15AUG19

34°43'N-89°01'W

RNAV (GPS) RWY 3

RIPLEY (25M)

SC-4, 22 JAN 2026 to 19 FEB 2026

SC-4, 22 JAN 2026 to 19 FEB 2026