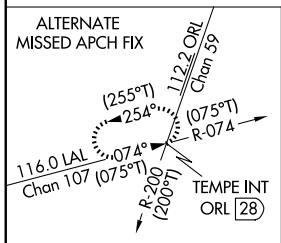
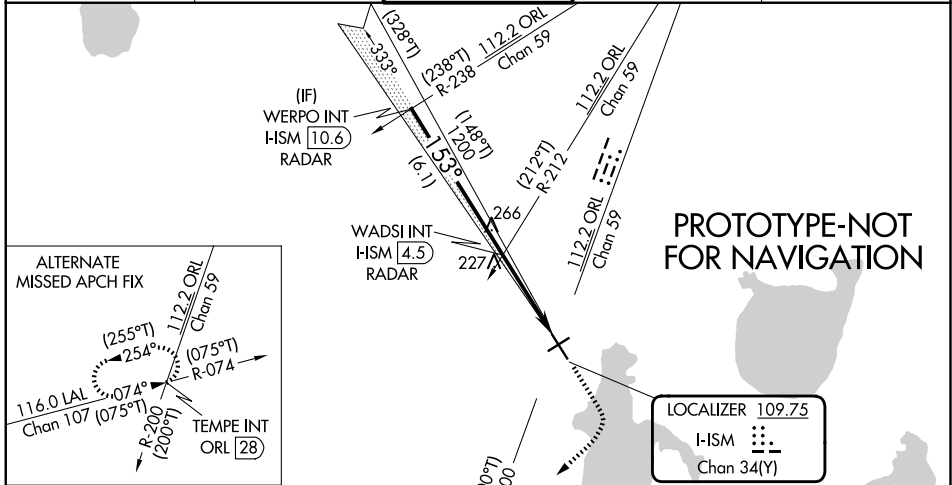


LOC/DME	I-ISM	APP CRS	Rwy Ldg	6001
109.75		153°	TDZE	82
Chan 34 (Y)			Apt Elev	82

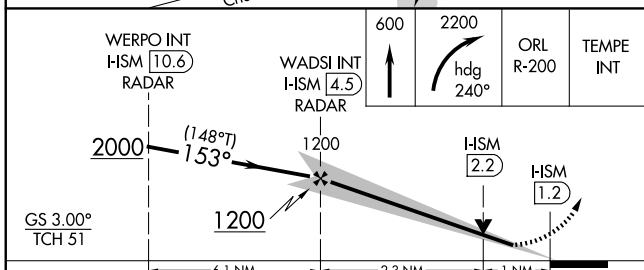
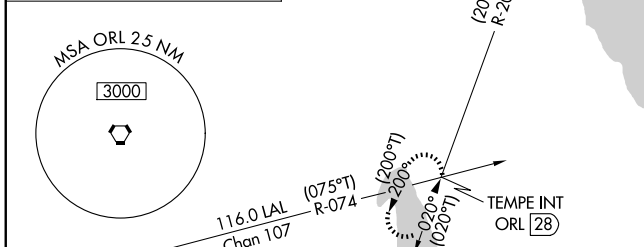
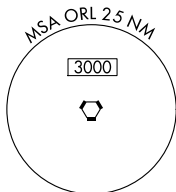
ILS or LOC RWY 15

KISSIMMEE GATEWAY (ISM)

RADAR required for procedure entry.			MALSF		MISSED APPROACH: Climb to 600 then climbing right turn to 2200 on heading 240° and ORL VORTAC R-200 to TEMPE INT/ORL 28 DME and hold.
▼ VDP NA when using MCO altimeter setting. When local altimeter setting not received, use MCO altimeter setting and increase S-ILS 1.5 DA to 360 feet; increase all MDAs 40 feet and S-LOC 1.5 visibility Cat C/D ¼ SM, and Circling visibility Cat C ¼ SM. ▲ NA					
ATIS	ORLANDO APP CON	KISSIMMEE TOWER ★	GND CON	UNICOM	
128.775	119.4 351.9	124.45 (CTAF) 0	121.7	122.95	



LOCALIZER 109.75
 I-ISM
 Chan 34(Y)



ELEV	82	TDZE	82
REIL Rwy 6, 24 and 33 MIRL Rwy 15-33 and 6-24			
FAF to MAP 3.3 NM			
Knots	60	90	120 150 180
Min:Sec	3:18	2:12	1:39 1:19 1:06

CATEGORY	A	B	C	D
S-ILS 15		332-¾	250 (300-¾)	
S-LOC 15		460-¾	378 (400-¾)	
CIRCLING	680-1	598 (600-1)	680-1½ 598 (600-1½)	700-2 618 (700-2)