

Flight Procedures Cover Page	Task Action: FLIGHT CHECK	Task Type: IAP	Estimated Chart Date: 05/14/2026	APWS Task ID: 787BD323C1EB4849BAED061BCCCCF5830	APWS Project ID: 350E094835364D459F47758C3F0238EC
Procedure: RNAV (RNP) Z RWY 34R AMDT 1		Enroute: NO	Specialist: Armentrout, Britney		Agreement Number:
Airport ID: KSLC			Airport City: SALT LAKE CITY		State: UT
Facility ID:	Facility Type:	Flight Inspection Remark Type: New FC Slot			
<p>Procedure Comments: ACTIVE AIRNAV DATA USED.</p> <p>QWENN FIX COORDINATES MOVED, CINDR REMOVED FROM PROCEDURE, PLAGI ADDED TO PROCEDURE.</p> <p>MAX 190 KTS ADDED AT HAKKR, MAX 210 KTS ADDED AT PLAGI AND ALGIE.</p> <p>CANCEL WAIVER ON FILE FOR LEG LENGTH 3.14 NM FROM ALGIE TO HAKKR TO SUPPORT ATC VECTORS.</p> <p>CONTACT RAKE MCGRAW AJV-A422 405-954-8711.</p>					

FIPC BASIC FORM

PROCEDURE: RNAV (RNP) Z RWY 34R AMDT 1		AIRPORT NAME: SALT LAKE CITY INTL		AIRPORT ID: KSLC	SPECIAL CONTROL NO: SG-01-172-26
FAC ID: KSLC34R.01Z		CITY: SALT LAKE CITY		ST: UT	ORIG CHART DATE: 05/14/2026
DFL TYPE: PROC/P	THIRD PARTY: <input type="checkbox"/> YES	EST. TIME ON SITE: 0.4	REIMB. NUMBER:	PTS TASK ID: 787BD323C1EB4849BAED061BCCCF5830	

PREFLIGHT NOTES

REVIEWER:	DATE:
COMMENTS:	CHECK ONE: <input type="checkbox"/> FLT CK REQ <input type="checkbox"/> NFCR <input type="checkbox"/> REJECT
	YES NO
	CPV COMPLETE? <input checked="" type="checkbox"/> X

PROCEDURE RESULTS

INSPECTION DATE: 02/25/2026	CREW #: VN588	N #: N69	INSTRUMENT PROCEDURE STATUS: <input checked="" type="checkbox"/> SAT <input type="checkbox"/> SAT W/CHANGES <input type="checkbox"/> UNSAT	ARINC CODING: <input checked="" type="checkbox"/> SAT <input type="checkbox"/> SAT/GOLD <input type="checkbox"/> UNSAT
FLIGHT INSPECTOR SIGNATURE: james r jones @ 02/25/2026 18:06		PRINTED NAME: JONES, JAMES ROBERT		NOTAM INITIATED? <input type="checkbox"/> YES <input checked="" type="checkbox"/> NO

FLIGHT INSPECTOR REMARKS:
RNAV (RNP) Z RWY 34R, AMDT 1, Salt Lake City International, Salt Lake City, UT. SAT

IN-FLIGHT OBSTACLE REPORT

OBSTRUCTION ID #:	COORDINATES OR LOCATION:	GNSS ALTITUDE (MSL):	BAROMETRIC ALTITUDE (MSL):	HEIGHT ABOVE GROUND LEVEL:
--------------------------	---------------------------------	-----------------------------	-----------------------------------	-----------------------------------

SALT LAKE CITY, UTAH

AL-365 (FAA)

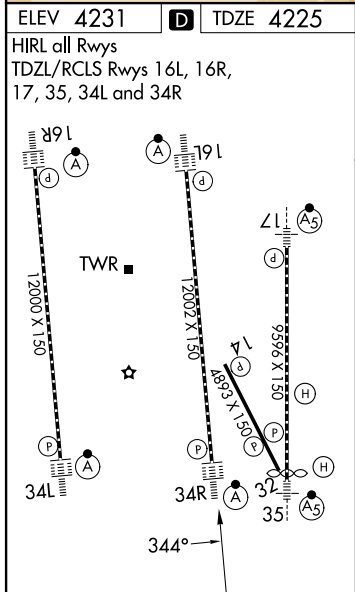
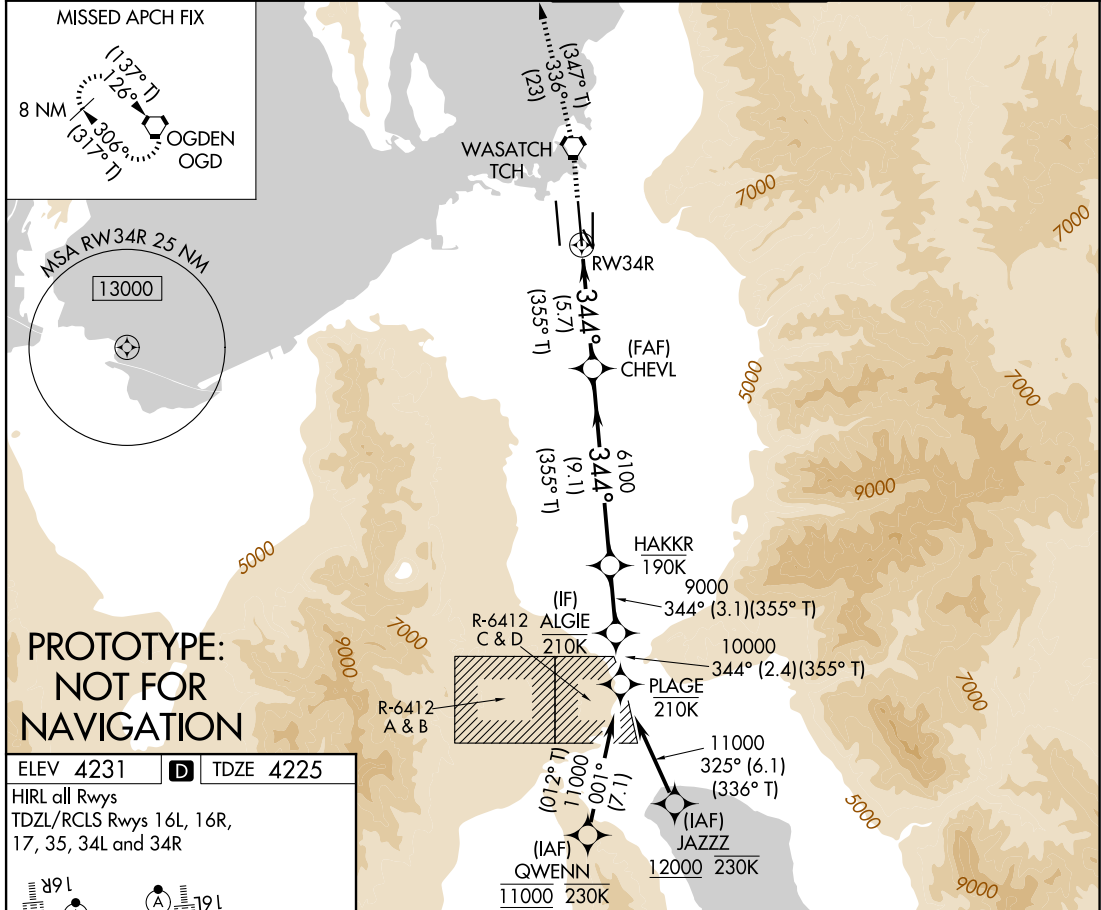
FIG

APP CRS 344°	Rwy Ldg TDZE Apt Elev	12002 4225 4231
------------------------	-----------------------------	--

RNAV (RNP) Z RWY 34R

SALT LAKE CITY INTL (SLC)

RNP AR APCH - GPS. Authorization required.		ALSF-2	MISSED APPROACH: Climb to 9000 direct TCH VORTAC and on track 336° to OGD VORTAC and hold.
<p>▼ For uncompensated Baro-VNAV systems, procedure NA below -9°C or above 54°C. Simultaneous approach authorized.</p>			
D-ATIS 124.75 125.625	SALT LAKE CITY APP CON 125.7 284.6	SALT LAKE CITY TOWER 119.05 257.8	GND CON 123.775 348.6



9000 TCH	tr 336°	OGD	VGSI and RNAV glidepath not coincident (VGSI Angle 3.00/TCH 73).	PLAGE
			CHEVL	ALGIE
			6100	9000
				11000
				10000
				GP 3.00°
				TCH 55
			5.7 NM	9.1 NM
			3.1 NM	2.4 NM
CATEGORY	A	B	C	D
RNP 0.10 DA		4546/26	321 (400-1/2)	
RNP 0.30 DA		4609/35	384 (400-5/8)	

AUTHORIZATION REQUIRED

AUTOMATED AL-365 RNAV (RNP) Z RWY 34R
 AUTOMATED AL-365 RNAV (RNP) Z RWY 34R

1:750000

SW-4

9 JAN 2025

COMPILER: CG

REVIEWER:

DBL CHKR:

EFF: FIG

SALT LAKE CITY, UTAH
Amdt 1 FIG

40°47'N-111°59'W

SALT LAKE CITY INTL (SLC)
RNAV (RNP) Z RWY 34R

OLD

SALT LAKE CITY, UTAH

AL-365 (FAA)

25219

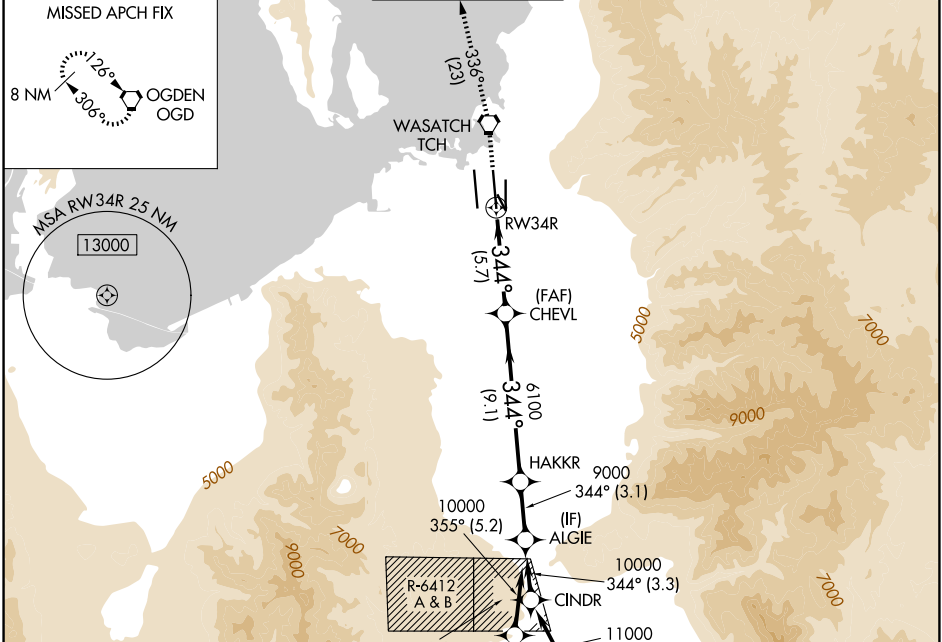
RNAV (RNP) Z RWY 34R

SALT LAKE CITY INTL (SLC)

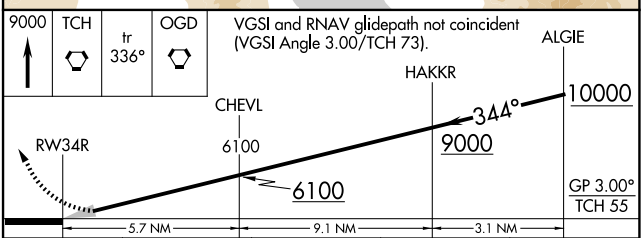
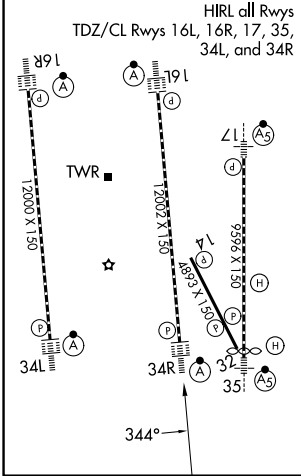
APP CRS 344°	Rwy Ldg TDZE Apt Elev	12002 4225 4231
------------------------	-----------------------------	--

RNP AR APCH - GPS. Authorization required.		ALSF-2	MISSED APPROACH: Climb to 9000 direct TCH VORTAC and on track 336° to OGD VORTAC and hold.	
▼ For uncompensated Baro-VNAV systems, procedure NA below -10°C or above 54°C. Simultaneous approach authorized.				

D-ATIS 124.75 125.625	SALT LAKE CITY APP CON 125.7 284.6	SALT LAKE CITY TOWER 119.05 257.8	GND CON 123.775 348.6	CLNC DEL 127.3 379.975	CPDLC
---------------------------------	--	---	---------------------------------	----------------------------------	-------



ELEV 4231	D	TDZE 4225
-----------	----------	-----------



CATEGORY	A	B	C	D
RNP 0.10 DA		4546/26	321 (400-½)	
RNP 0.30 DA		4609/35	384 (400-¾)	

AUTHORIZATION REQUIRED

SALT LAKE CITY, UTAH
Orig 20FEB25

40°47'N-111°59'W

SALT LAKE CITY INTL (SLC)

RNAV (RNP) Z RWY 34R

SW-4, 02 OCT 2025 to 30 OCT 2025

SW-4, 02 OCT 2025 to 30 OCT 2025

1. FLIGHT PROCEDURE IDENTIFICATION:

(Salt Lake City, UT)
(Salt Lake City International, KSLC)
[RNAV (RNP) Z RWY 34R]

2. WAIVER REQUIRED AND APPLICABLE STANDARD:

8260.58C Paragraph 1-3-1c:
The first leg of an initial and the first leg of an intermediate segment must be a TF that accommodates a 90-degree intercept angle.

3. REASON FOR WAIVER (JUSTIFICATION FOR NONSTANDARD TREATMENT):

Request to publish the RNAV (RNP) Z RWY 34R using a leg length from ALGIE to HAKKR of 3.14 NM versus the minimum leg length of 4.80 NM to support ATC vectors.

4. EQUIVALENT LEVEL OF SAFETY PROVIDED:

1. When aircraft are vectored to the procedure, they are only vectored to intercept the straight intermediate segment and not initial segment fixes.
2. Aircraft established on the QWENN STAR between QWENN and ALGIE will be TF and require a heading change of less than 22 degrees when reaching the (IAF).
3. The prohibition against vectoring to ALGIE (IF) or HAKKR which are aligned on the straight-in final approach course where aircraft should be established on one of the two STARS or on an initial segment due to R-6412 C & D located directly on the final approach course and with parallel operations to RWY 34L will be included in the next version of the facilities' Standard Operating Procedure (SOP).
4. Pilots/ATC workload will be streamlined to reduce communications by issuing approach clearance instructions well in advance and by not trying to vector in the congested terminal area.

5. ALTERNATIVE ACTIONS DEEMED NOT FEASIBLE:

1. Extending the leg lengths between ALGIE and HAKKR is not feasible as it would cause a possible airspace reconfiguration with the strategic terminus point location, the restricted area and the airports/airspaces with their traffic patterns just south of KSLC.
2. Moving ALGIE or HAKKR to accommodate the leg length requirement would impact the established descent gradient and segment length criteria violations for other segments.
3. Relocating R-6412 A - D.

6. COORDINATION WITH USER ORGANIZATIONS (SPECIFY):

AFS
KSLC

7. SUBMITTED BY:

DATE	OFFICE IDENTIFICATION	TITLE
	AJV-A	MANAGER

SIGNATURE

This waiver is canceled effective May 14, 2026.
Approach is being amended per FPT request.

Digitally signed by

Lonnie Everhart, **RAKE MCGRAW**
Manager

Feb 12, 2026

Instrument Flight Procedures Group, AJV-A422

8. AFS ACTIONS:

APPROVED DISAPPROVED NOT REQUIRED

COMMENTS:

DATE	ROUTING SYMBOL	SIGNATURE