

Flight Procedures Cover Page	Task Action: P-NOTAM	Task Type: IAP	Estimated Chart Date: 09/03/2026	APWS Task ID: 78B56725FF5C47179B7987AAA873732B	APWS Project ID: C4AFE68B92C345369ECB8D8213FB0AD2
Procedure: RNAV (GPS) RWY 3 AMDT 2B		Enroute: NO	Specialist: Johnson, Timothy		Agreement Number:
Airport ID: KSJT			Airport City: SAN ANGELO		State: TX
Facility ID:	Facility Type:	Flight Inspection Remark Type:			

Procedure Comments:

Visibility Initiative (Garmin) - Update IAP visibility minimums IAW Order 8260.3, Chapter 3, Section 3-3. Visibility Minimums.

PROCESSED IAW TECHNICAL SUPPORT GROUP (AJF-17) MEMO DATED 07/07/2021, SUBJECT: GUIDANCE FOR PROCEDURAL CHANGES REQUIRING FLIGHT INSPECTION/VALIDATION.

CONTACT: CASEY HILL (405) 954-0624.



WAAS CH 77517 W03A	APP CRS 038°	Rwy Ldg TDZE Apt Elev	5940 1917 1919
--	------------------------	-----------------------------	---

RNAV (GPS) RWY 3
SAN ANGELO RGNL/MATHIS FLD (SJT)

RNP APCH - GPS.

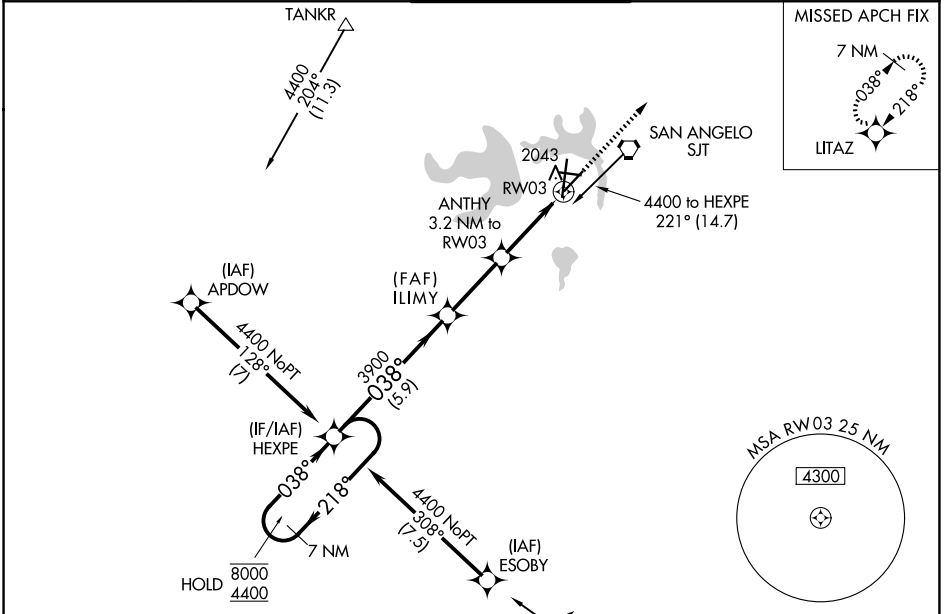
For uncompensated Baro-VNAV systems, LNAV/VNAV NA below -8°C or above 54°C.
For inop ALS, increase LPV Cat E visibility to RVR 4000, and LNAV/VNAV Cat E and LNAV Cat E visibility to RVR 6000. Circling NA for Cat E west of Rwy 18-36.
ASR # RVR 1800 authorized with use of FD or AP or HUD to DA.

MALSR

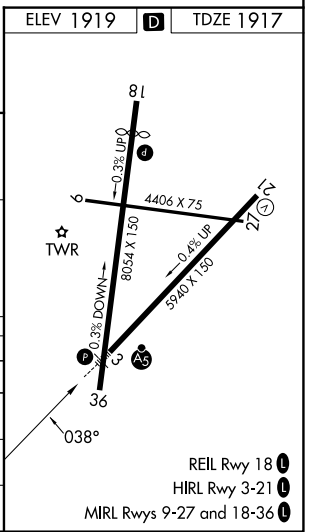
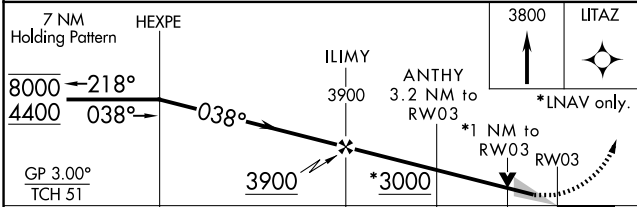


MISSED APPROACH:
Climb to 3800 direct LITAZ and hold.

ATIS 128.45 319.0	SAN ANGELO APP CON * 125.35 354.1	MATHIS TOWER * 118.3(CTAF) 284.7	GND CON 121.9 348.6	UNICOM 122.95
-----------------------------	---	--	-------------------------------	-------------------------



ELEV 1919	D	TDZE 1917
-----------	----------	-----------



CATEGORY	A	B	C	D	E
LPV DA #	2117/24		200 (200-½)		
LNAV/VNAV DA	2323/35		406 (500-¾)		
LNAV MDA	2300/24 383 (400-½)		2300/35 383 (400-¾)		
CIRCLING	2360-1 441 (500-1)	2380-1 461 (500-1)	2500-1½ 581 (600-1½)	2700-2½ 781 (800-2½)	2700-2¾ 781 (800-2¾)

REIL Rwy 18
HIRL Rwy 3-21
MIRL Rwy 9-27 and 18-36

SC-3, 16 APR 2026 to 14 MAY 2026

SC-3, 16 APR 2026 to 14 MAY 2026