

Flight Procedures Cover Page	Task Action: FLIGHT CHECK	Task Type: IAP	Estimated Chart Date: 02/20/2025	APWS Task ID: 792AE1B24CA94E37A0173E1E692A4CA5	APWS Project ID: 397041719E7E4431BC132679072E30AF
Procedure: RNAV (GPS) RWY 3 AMDT 0B		Enroute: NO	Specialist: Clark, Jacob		Agreement Number:
Airport ID: KMNM			Airport City: MENOMINEE		State: MI
Facility ID:	Facility Type:	Flight Inspection Remark Type: New FC Slot			

Procedure Comments:
 CLEARS FDC 4/9934 MNM IAP MENOMINEE RGNL, MENOMINEE, MI.
 ABBREVIATED AMENDMENT USING ACTIVE AIRNAV DATA.
 NEW CONTROLLING OBSTACLES WITH 34:1 PENETRATIONS.



FIPC BASIC FORM

PROCEDURE: RNAV (GPS) RWY 3 AMDT 0B		AIRPORT NAME: MENOMINEE RGNL		AIRPORT ID: KMNM	SPECIAL CONTROL NO: BG-12-163-24
FAC ID: KMNM03		CITY: MENOMINEE		ST: MI	ORIG CHART DATE: 04/17/2025
DFL TYPE: PROC/S	THIRD PARTY: <input type="checkbox"/> YES	EST. TIME ON SITE: 0.4	REIMB. NUMBER:	PTS TASK ID: 792AE1B24CA94E37A0173E1E692A4CA5	

PREFLIGHT NOTES

REVIEWER: marc webber			DATE: 02/27/2025				
COMMENTS:			CHECK ONE:				
			<input checked="" type="checkbox"/> FLT CK REQ <input type="checkbox"/> NFCR <input type="checkbox"/> REJECT				
						YES	NO
			CPV COMPLETE?		X		

PROCEDURE RESULTS

INSPECTION DATE: 02/27/2025	CREW #: VN424	N #: N83	INSTRUMENT PROCEDURE STATUS: <input checked="" type="checkbox"/> SAT <input type="checkbox"/> SAT W/CHANGES <input type="checkbox"/> UNSAT		ARINC CODING: <input checked="" type="checkbox"/> SAT <input type="checkbox"/> SAT/GOLD <input type="checkbox"/> UNSAT	
FLIGHT INSPECTOR SIGNATURE: marc webber @ 02/27/2025 19:04			PRINTED NAME: WEBBER, MARC RAYMOND			NOTAM INITIATED? <input type="checkbox"/> YES <input checked="" type="checkbox"/> NO

FLIGHT INSPECTOR REMARKS:

IN-FLIGHT OBSTACLE REPORT

OBSTRUCTION ID #:	COORDINATES OR LOCATION:	GNSS ALTITUDE (MSL):	BAROMETRIC ALTITUDE (MSL):	HEIGHT ABOVE GROUND LEVEL:
--------------------------	---------------------------------	-----------------------------	-----------------------------------	-----------------------------------

WAAS CH 73014 W03A	APP CRS 034°	Rwy Idg TDZE Apt Elev	5999 624 625
--	------------------------	-----------------------------	---

OLD

RNAV (GPS) RWY 3

MENOMINEE RGNL (MNM)

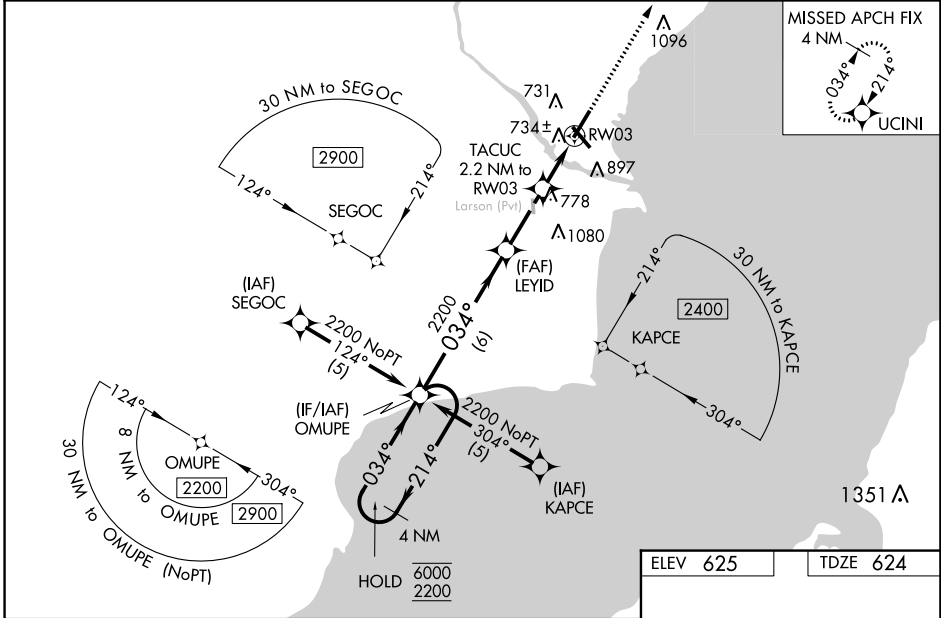
RNP APCH.

⚠ Circling Rwy 14, 32 NA at night. Baro-VNAV and VDP NA when using Sturgeon Bay altimeter setting. For uncompensated Baro-VNAV systems, LNAV/VNAV NA below -16°C or above 54°C. When local altimeter setting not received, use Sturgeon Bay altimeter setting and increase all DA/MDA 60 feet, increase Circling Cat C/D visibility ½ SM. For inop MALSRL when using Sturgeon Bay altimeter setting increase LNAV MDA visibility Cat C/D to 1¾. Inop table does not apply to LPV and LNAV/VNAV all Cats and LNAV MDA Cats A/B.



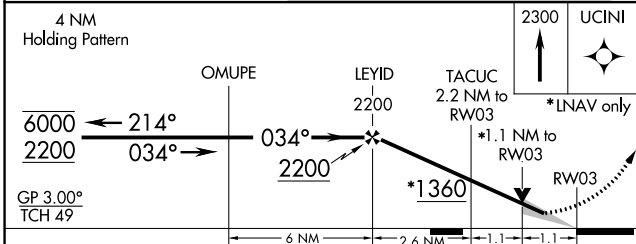
MALSRL
MISSED APPROACH:
Climb to 2300 direct UCINI and hold.

AWOS-3PT 121.45	GREEN BAY APP CON ★ 120.3 338.2	UNICOM 122.8 (CTAF) Ⓛ
---------------------------	---	--



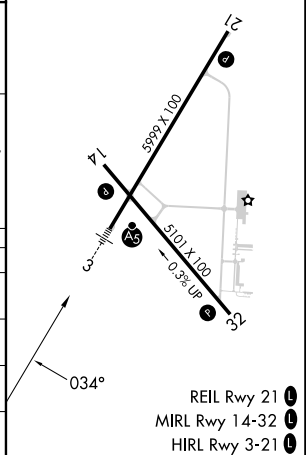
EC-1, 03 OCT 2024 to 31 OCT 2024

EC-1, 03 OCT 2024 to 31 OCT 2024



ELEV 625	TDZE 624
----------	----------

CATEGORY	A	B	C	D
LPV DA		824-1	200 (200-1)	
LNAV/VNAV DA		1150-1½	526 (600-1)	
LNAV MDA		1000-1	376 (400-1)	
C CIRCLING	1200-1	575 (600-1)	1200-1½ 575 (600-1½)	1380-2½ 755 (800-2½)



WAAS CH 73014 W03A	APP CRS 034°	Rwy Idg TDZE Apt Elev	5999 624 625
--	------------------------	-----------------------------	---

RNAV (GPS) RWY 3

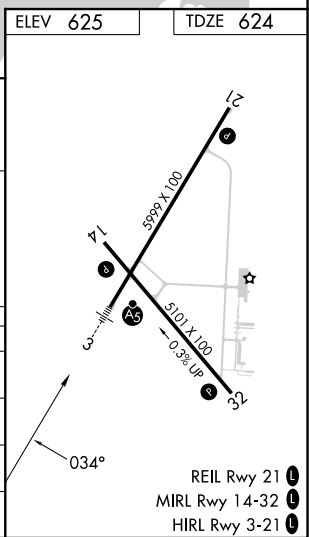
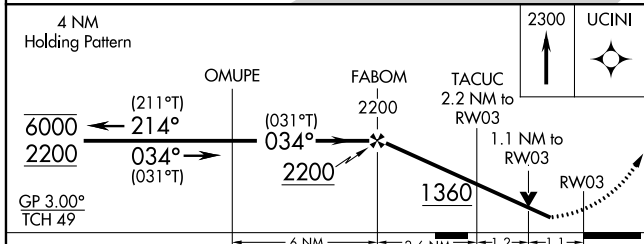
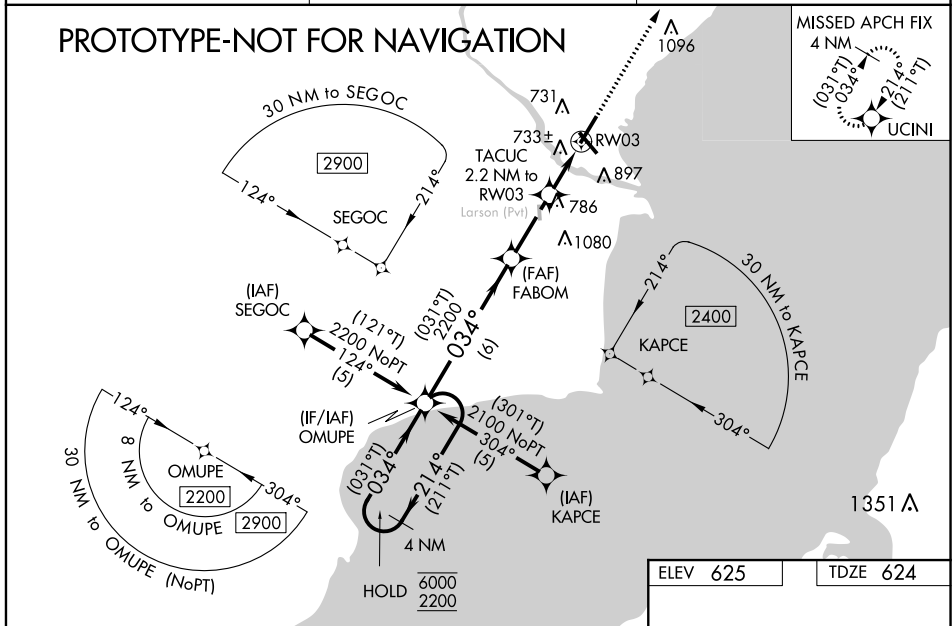
MENOMINEE RGNL (MNM)

RNP APCH - GPs.

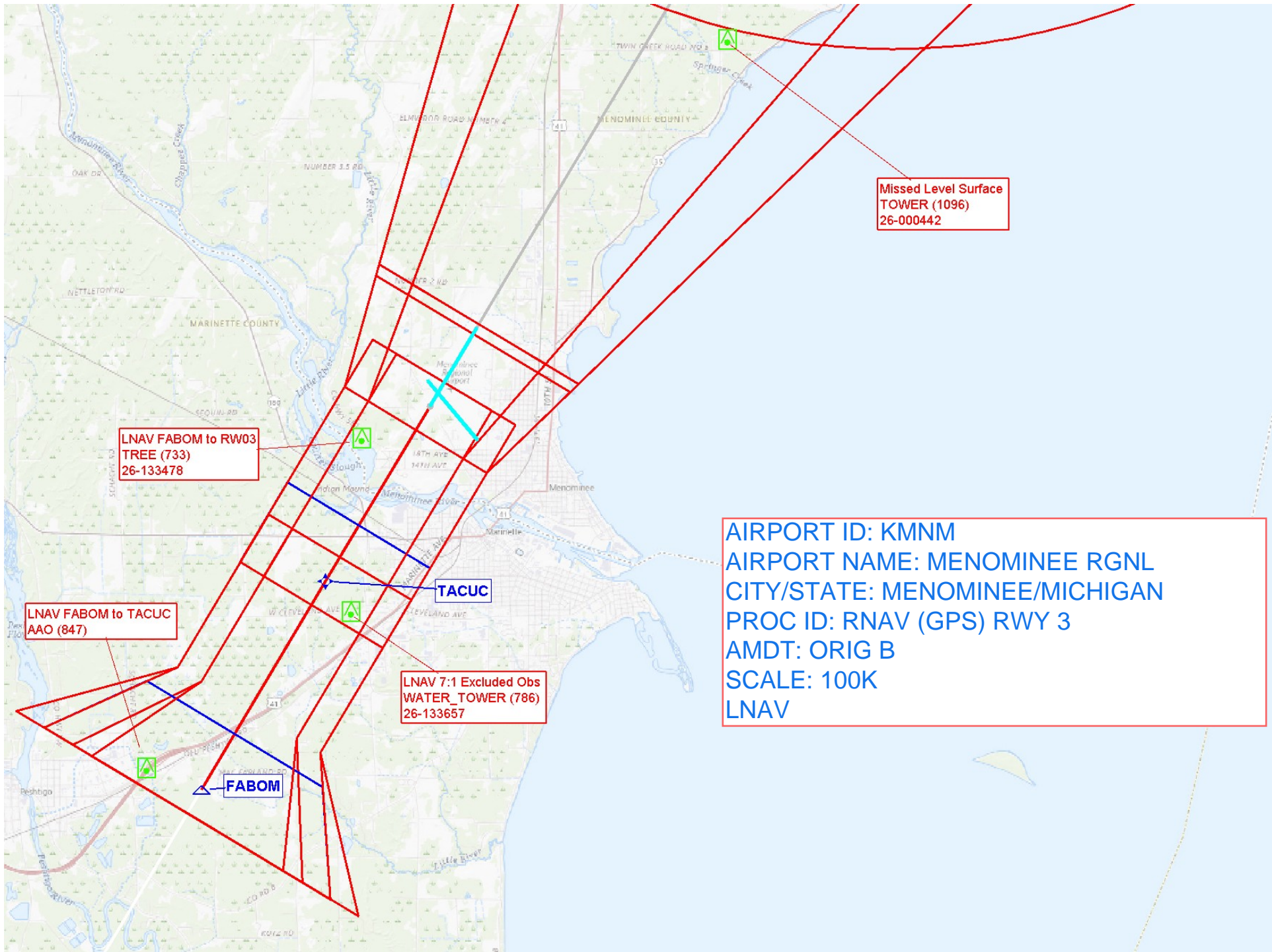
▼ Baro-VNAV and VDP NA when using SUE altimeter setting. Circling Rwy 14, 32 NA at night. For uncompensated Baro-VNAV systems, LNAV/VNAV NA below -16°C or above 54°C. Rwy 3 helicopter visibility reduction below ¾ SM NA. When local altimeter setting not received, use SUE altimeter setting and increase all DA/MDA 60 feet, increase LNAV/VNAV all Cats and Circling Cat C/D visibility ¼ SM. For inop ALS when using SUE altimeter setting increase LNAV MDA visibility Cat C/D to 1¼ SM. Inop table does not apply to LPV and LNAV all Cats.

MALSRL MISSED APPROACH: Climb to 2300 direct UCINI and hold.

AWOS-3PT 121.45	GREEN BAY APP CON ★ 120.3 338.2	UNICOM 122.8 (CTAF) 0
---------------------------	---	---------------------------------



CATEGORY	A	B	C	D
LPV DA		900-1	276 (300-1)	
LNAV/ VNAV DA		1150-1½	526 (600-1½)	
LNAV MDA		1000-1	376 (400-1)	
CIRCLING	1200-1	575 (600-1)	1200-1½ 575 (600-1½)	1380-2½ 755 (800-2½)



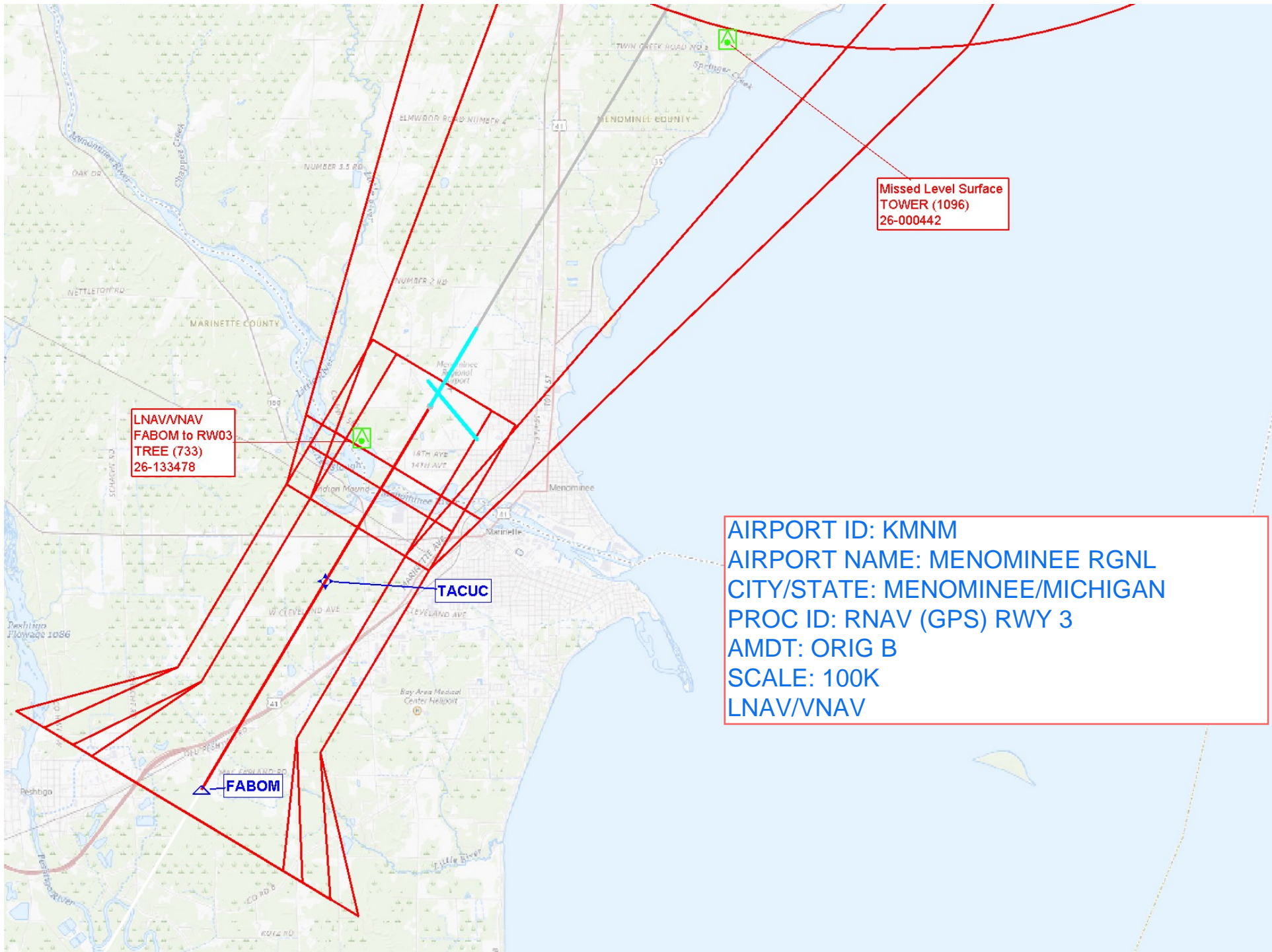
Missed Level Surface
TOWER (1096)
26-000442

LNAV FABOM to RW03
TREE (733)
26-133478

LNAV FABOM to TACUC
AAO (847)

LNAV 7:1 Excluded Obs
WATER_TOWER (786)
26-133657

AIRPORT ID: KMMN
AIRPORT NAME: MENOMINEE RGNL
CITY/STATE: MENOMINEE/MICHIGAN
PROC ID: RNAV (GPS) RWY 3
AMDT: ORIG B
SCALE: 100K
LNAV



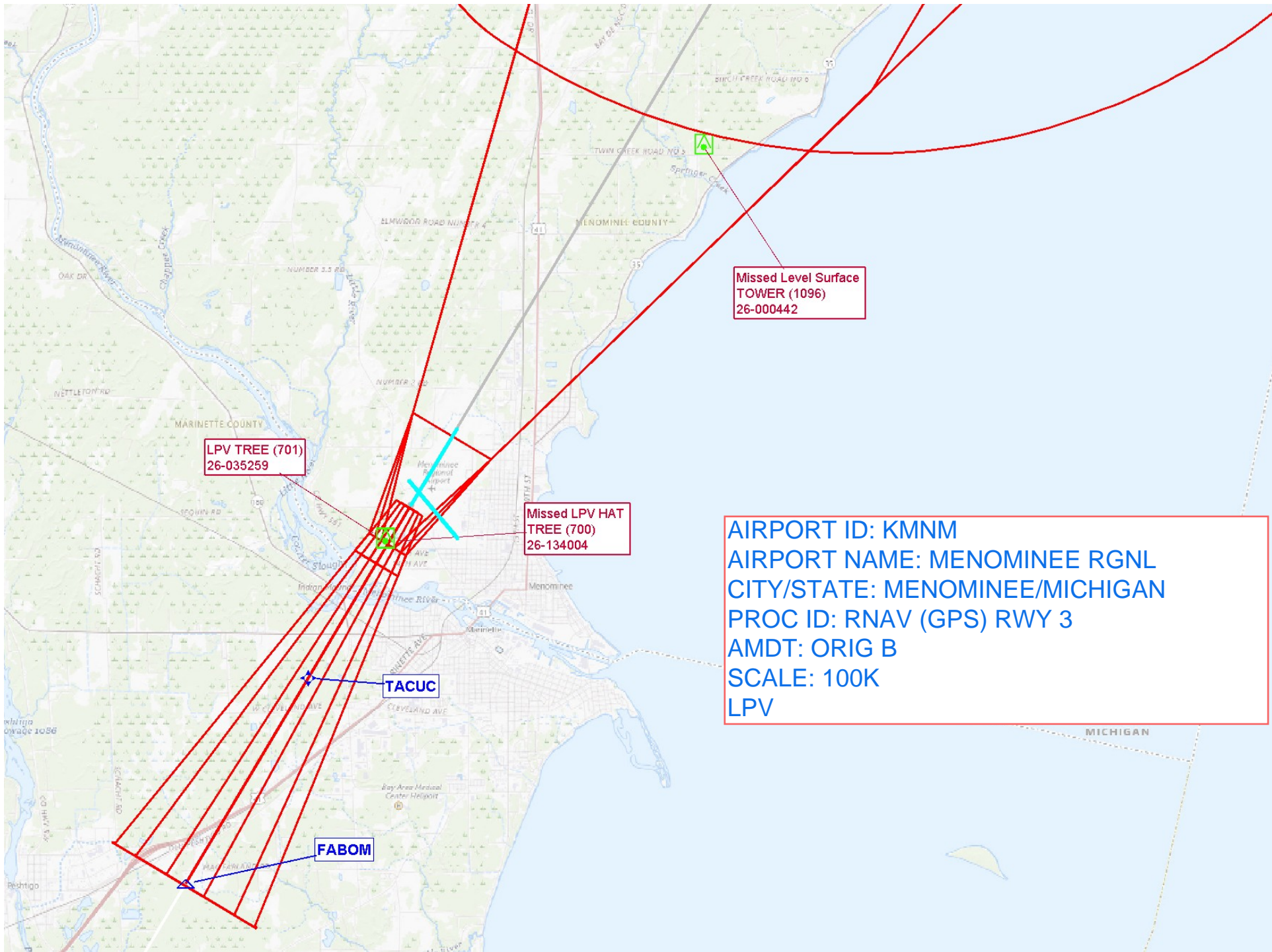
LNAV/VNAV
FABOM to RW03
TREE (733)
26-133478

Missed Level Surface
TOWER (1096)
26-000442

AIRPORT ID: KMNM
AIRPORT NAME: MENOMINEE RGNL
CITY/STATE: MENOMINEE/MICHIGAN
PROC ID: RNAV (GPS) RWY 3
AMDT: ORIG B
SCALE: 100K
LNAV/VNAV

TACUC

FABOM



LPV TREE (701)
26-035259

Missed Level Surface
TOWER (1096)
26-000442

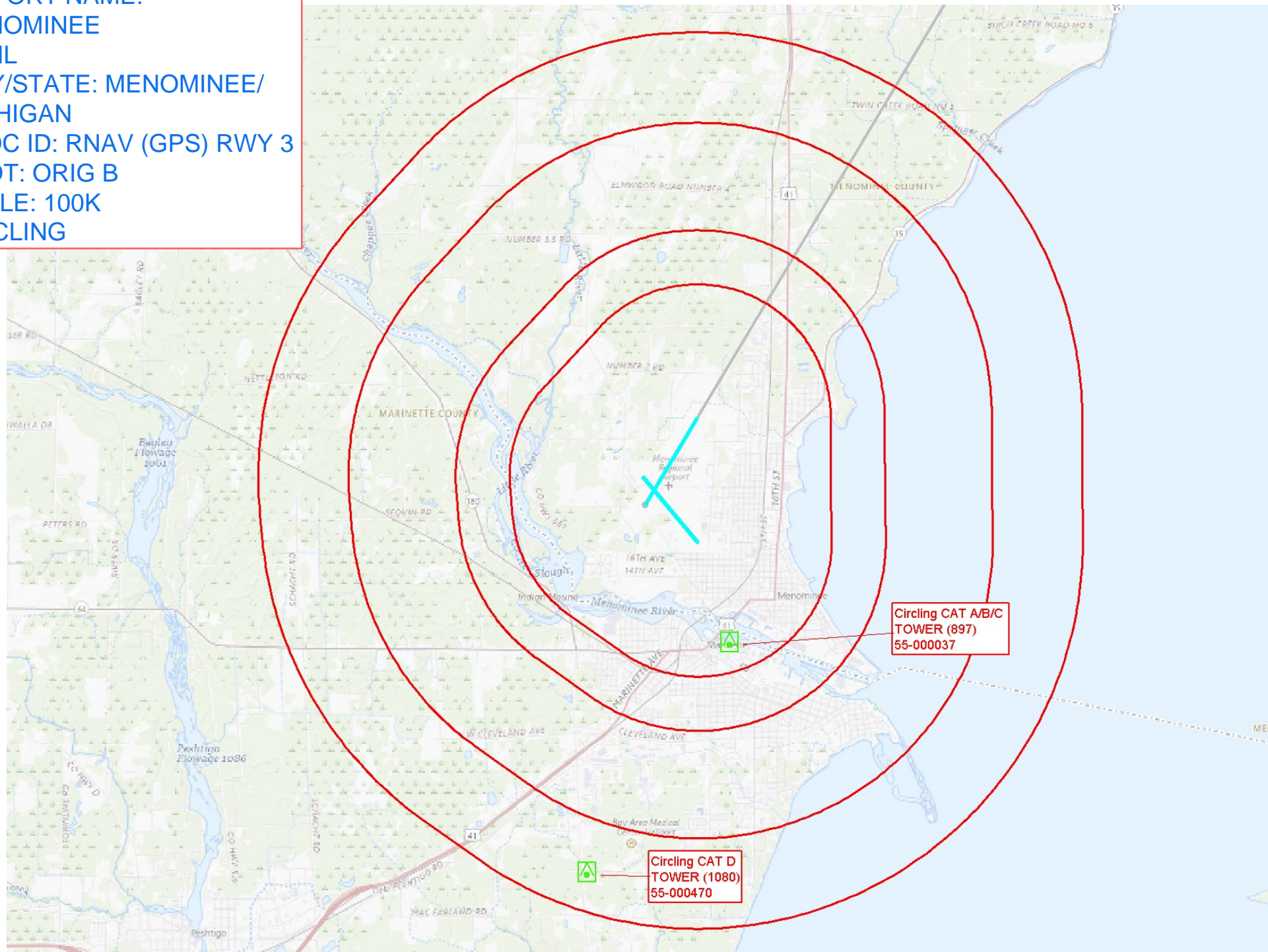
Missed LPV HAT
TREE (700)
26-134004

AIRPORT ID: KMMN
AIRPORT NAME: MENOMINEE RGNL
CITY/STATE: MENOMINEE/MICHIGAN
PROC ID: RNAV (GPS) RWY 3
AMDT: ORIG B
SCALE: 100K
LPV

TACUC

FABOM

AIRPORT ID: KMMN
AIRPORT NAME:
MENOMINEE
RGNL
CITY/STATE: MENOMINEE/
MICHIGAN
PROC ID: RNAV (GPS) RWY 3
AMDT: ORIG B
SCALE: 100K
CIRCLING



Circling CAT A/B/C
TOWER (897)
55-000037

Circling CAT D
TOWER (1080)
55-000470

AIRPORT ID: KMMN
AIRPORT NAME: MENOMINEE RGNL
CITY/STATE: MENOMINEE/
MICHIGAN
PROC ID: RNAV (GPS) RWY 3
AMDT: ORIG B
SCALE: 500K
HILPT/INTERMEDIATE/FINAL

