

Flight Procedures Cover Page	Task Action: FLIGHT CHECK	Task Type: IAP	Estimated Chart Date: 06/12/2025	APWS Task ID: 7A6F87F81E524DF99347D6C063D40653	APWS Project ID: BE2A44C55BCE4866BB0176D2985FDA2F
Procedure: VOR-A AMDT 5	Enroute: NO	Specialist: Clark, Jacob	Agreement Number:		
Airport ID: 2W2	Airport City: WESTMINSTER	State: MD			
Facility ID: EMI	Facility Type: VORTAC	Flight Inspection Remark Type: New FC Slot			

Procedure Comments:  
 UPDATED MISSED APPROACH HOLDING TO: HOLD NE, RT, 235.11 INBOUND, FOR NAVAID RECEPTION.  
 RAISED CIRCLING MINIMUMS TO 1320 / 521  
 EMI VOR R-179 UNUSABLE

QUALITY  
9  
CHECKED  
BEGUE

QUALITY  
25  
CHECKED



VORTAC EMI <b>117.9</b> Chan <b>126</b>	APP CRS <b>235°</b>	Rwy Idg TDZE Apt Elev <b>N/A</b> <b>N/A</b> <b>799</b>
---	------------------------	---

# VOR-A

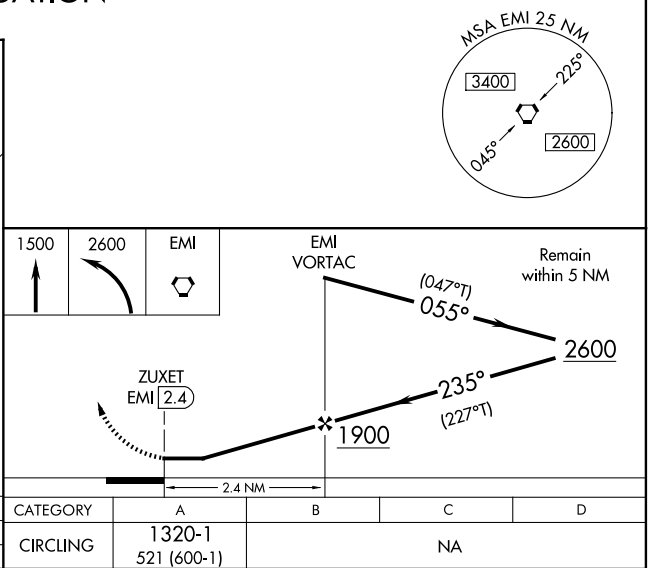
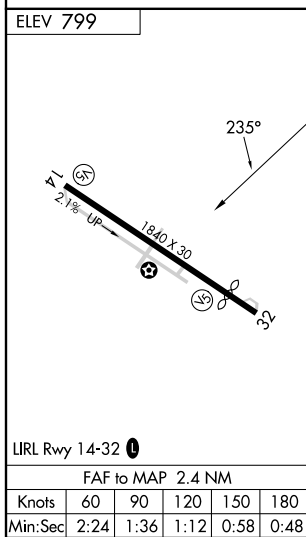
CLEARVIEW AIRPARK (2W2)

<p><b>NA</b> Procedure NA at night. Use DMW altimeter setting; when not received, use GAI altimeter setting and increase MDAs 60 feet.</p>	<p>MISSED APPROACH: Climb to 1500, then climbing left turn to 2600 on direct EMI VORTAC and hold, continue climb-in-hold.</p>
--	---

DMW AWOS-3 <b>121.25</b>	POTOMAC APP CON <b>125.525 291.625</b>	UNICOM <b>122.8 (CTAF)</b>
-----------------------------	---	-------------------------------



PROTOTYPE-  
NOT FOR NAVIGATION



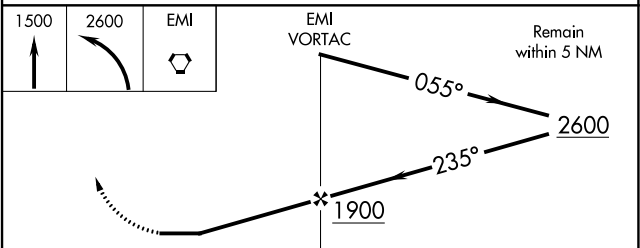
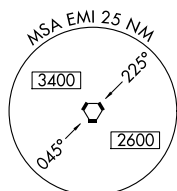
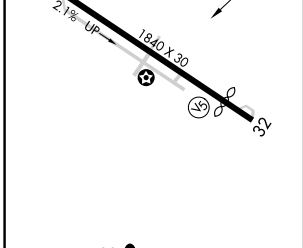
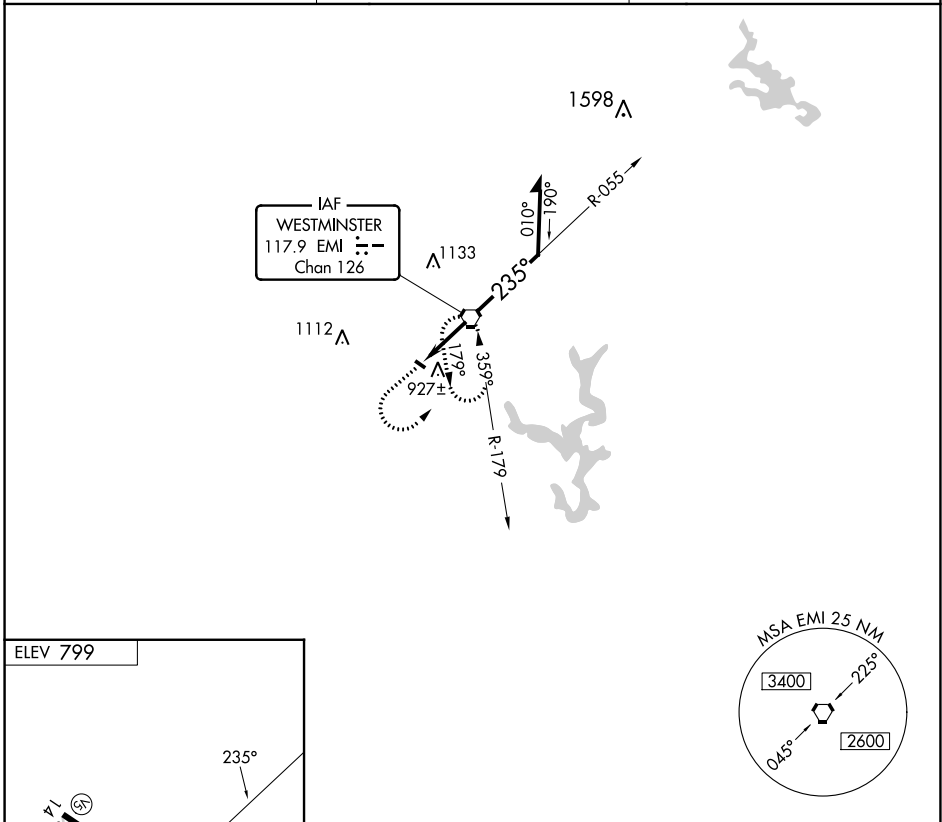
VORTAC EMI <b>117.9</b> Chan <b>126</b>	APP CRS <b>235°</b>	Rwy Idg TDZE Apt Elev <b>N/A</b> <b>N/A</b> <b>799</b>
---	------------------------	---



**VOR-A**  
CLEARVIEW AIRPARK (2W2)

<p><b>NA</b></p> <p>Use Carroll County Rgnl/Jack B Poage Fld altimeter setting. Procedure NA at night. Helicopter visibility reduction below 1 SM NA.</p>	<p>MISSED APPROACH: Climb to 1500, then climbing left turn to 2600 direct EMI VORTAC and hold.</p>
---	--

DMW AWOS-3 <b>121.25</b>	POTOMAC APP CON <b>125.525 291.625</b>	UNICOM <b>122.8 (CTAF)</b>
-----------------------------	---	-------------------------------

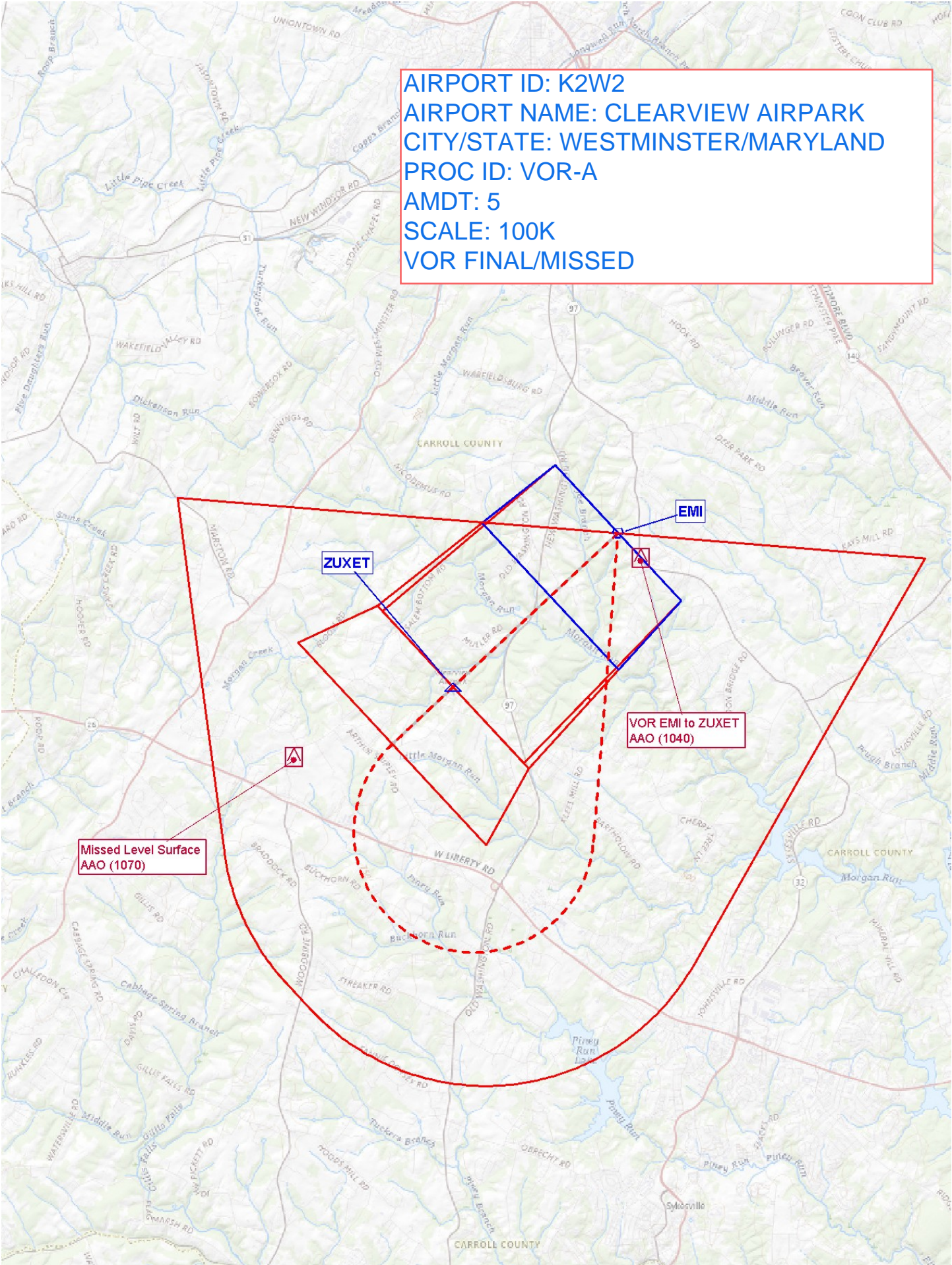


LIRL Rwy 14-32						FAF to MAP 2.4 NM					
Knots		60	90	120	150	180	CATEGORY	A	B	C	D
Min:Sec		2:24	1:36	1:12	0:58	0:48	CIRCLING	1320-1	521 (600-1)	NA	

NE-3, 31 OCT 2024 to 28 NOV 2024

NE-3, 31 OCT 2024 to 28 NOV 2024

AIRPORT ID: K2W2  
AIRPORT NAME: CLEARVIEW AIRPARK  
CITY/STATE: WESTMINSTER/MARYLAND  
PROC ID: VOR-A  
AMDT: 5  
SCALE: 100K  
VOR FINAL/MISSED



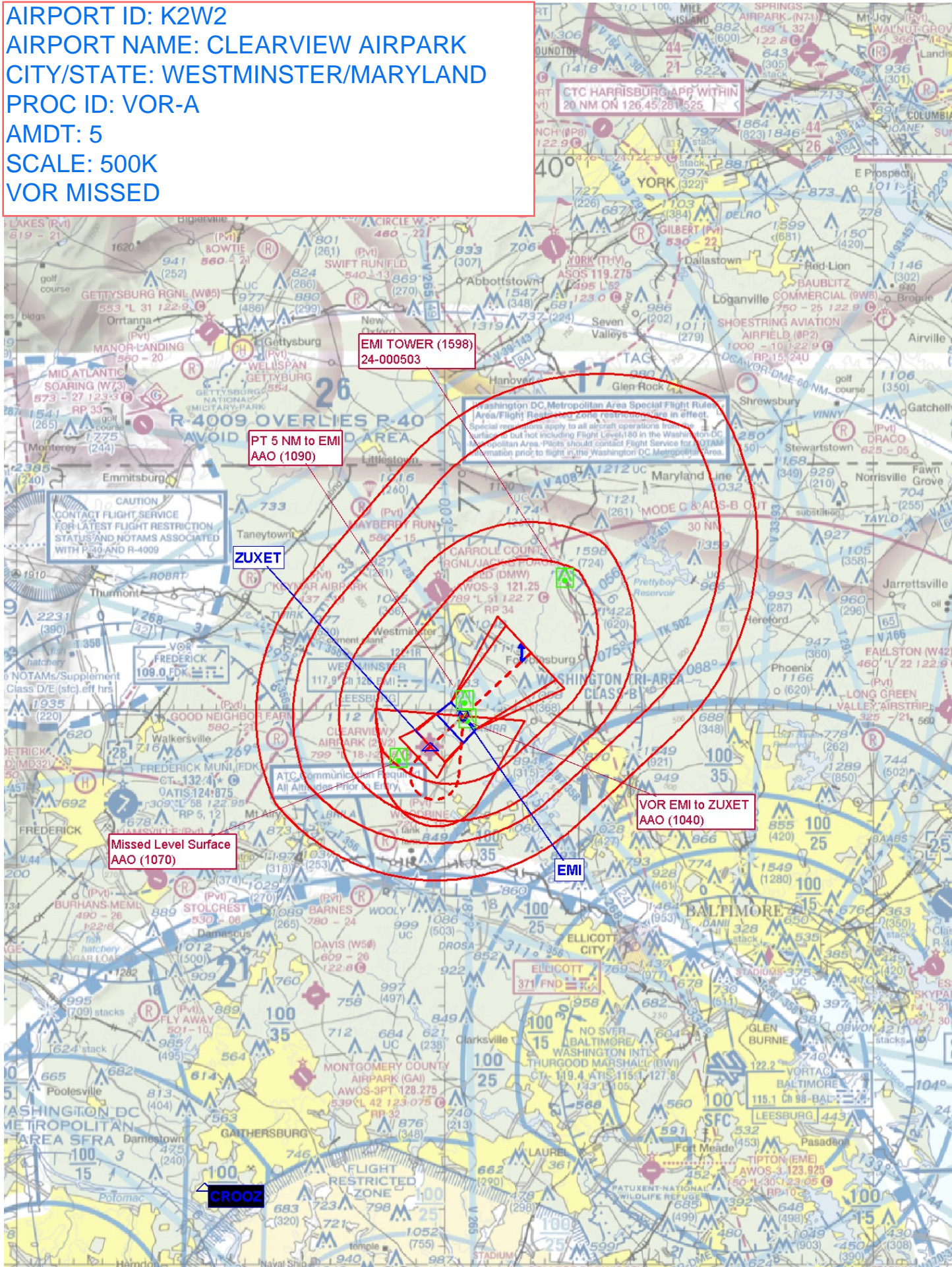
ZUXET

EMI

VOR EMI to ZUXET  
AAO (1040)

Missed Level Surface  
AAO (1070)

AIRPORT ID: K2W2  
AIRPORT NAME: CLEARVIEW AIRPARK  
CITY/STATE: WESTMINSTER/MARYLAND  
PROC ID: VOR-A  
AMDT: 5  
SCALE: 500K  
VOR MISSED





AIRPORT ID: K2W2  
AIRPORT NAME: CLEARVIEW AIRPARK  
CITY/STATE: WESTMINSTER/MARYLAND  
PROC ID: VOR-A  
AMDT: 5  
SCALE: 100K  
VOR CIRCLING

