

Flight Procedures Cover Page	Task Action: Cancellation	Task Type: IAP	Estimated Chart Date: 03/19/2026	APWS Task ID: 7ABAFFDD566A4F059860AA19ADE871B2	APWS Project ID: 07C1D48E87864C13962675799CA5C93C
Procedure: VOR RWY 35 AMDT 6D	Enroute: NO	Specialist: Heiderstadt, Nicholas	Agreement Number:		
Airport ID: KAUG	Airport City: AUGUSTA	State: ME			
Facility ID:	Facility Type:	Flight Inspection Remark Type:			

Procedure Comments:  
 CANCELLATION OF PROCEDURE  
 CONTACT ROBERT HAMILTON 405-954-4608

2/2/2026: THIS IS A CORRECTED COPY OF THE PROCEDURE DEVELOPED ON 1/13/2026.

1. 8260-2 AUG VOR/DME  
 PAT 1 CONTROLLING OBSTACLE CHANGED FROM 200 AAO 442527.00N/0695803.00W TO 200 AAO 442604.04N/0695537.29W,  
 AUG VOR RWY 35 REMOVED FROM FIX USE
2. 860-2 UNCAP  
 CANCELLED.- NO LONGER USED
3. 8260-2 DACCI  
 CANCELLED.- NO LONGER USED

2/2/2026: THIS IS A CORRECTED COPY OF THE PROCEDURE DEVELOPED ON 1/13/2026.  
 AUG VOR RWY 35 AMDT 7 DELETED, REPLACED WITH AUG VOR RWY 35 AMDT 6D CANCELLATION.



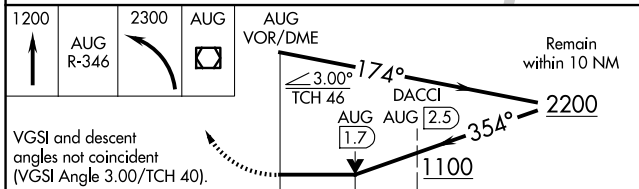
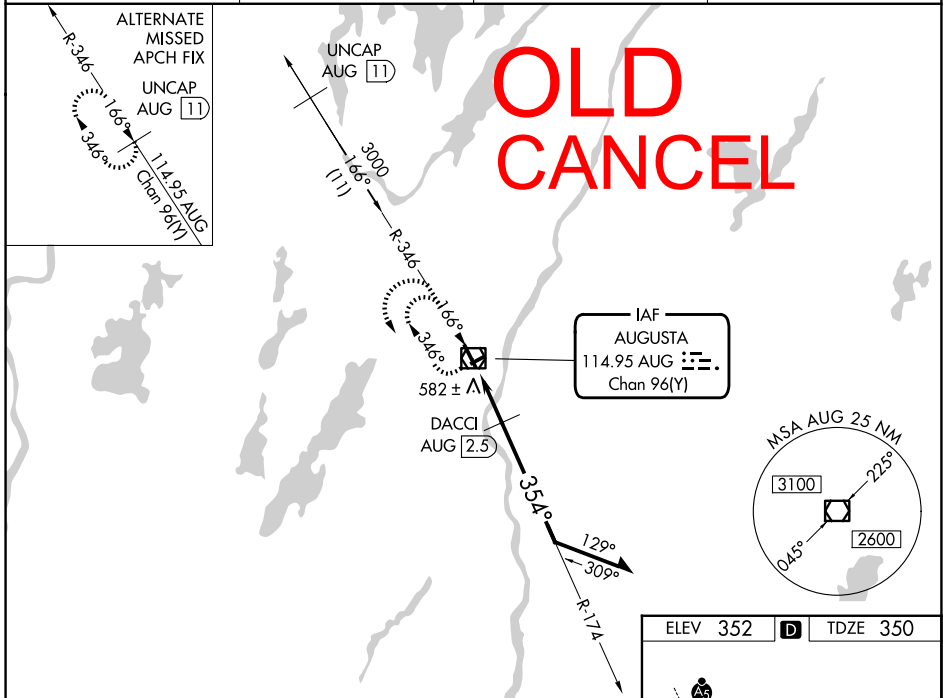
VOR/DME AUG <b>114.95</b> Chan <b>96(Y)</b>	APP CRS <b>354°</b>	Rwy Ldg <b>5002</b> TDZE <b>350</b> Apt Elev <b>352</b>
---	------------------------	---

**VOR RWY 35**  
AUGUSTA STATE (AUG)

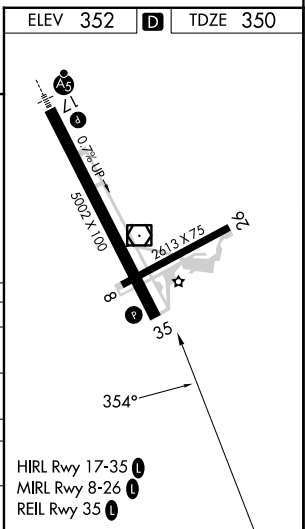
**▼** Rwy 35 helicopter visibility reduction below 3/4 SM NA. When local altimeter setting not received, use Waterville altimeter setting: increase all MDA 40 feet and visibility S-35 Cats C and D 1/2 SM, and Circling Cat D 1/4 SM; DACCI fix minimums increase visibility S-35 Cats C and D 1/2 SM, and Circling Cat D 1/4 SM. Circling Rwy 8, 26 NA at night.

**MISSED APPROACH:** Climb to 1200 on AUG VOR/DME R-346, then climbing left turn to 2300 direct AUG VOR/DME and hold.

ASOS <b>118.325</b>	PORTLAND APP CON * <b>128.35 299.2</b>	CLNC DEL <b>119.95 299.2</b>	UNICOM <b>123.0 (CTAF) 0</b>
------------------------	---	---------------------------------	---------------------------------



CATEGORY	A	B	C	D
S-35	1100-1 750 (800-1)	1100-1 1/4 750 (800-1 1/4)	1100-2	750 (800-2)
CIRCLING	1100-1 748 (800-1)	1100-1 1/4 748 (800-1 1/4)	1100-2 1/4 748 (800-2 1/4)	1160-2 1/2 808 (900-2 1/2)
DACCI FIX MINIMUMS				
S-35	840-1	490 (500-1)	840-1 3/8	490 (500-1 3/8)
CIRCLING	960-1 608 (700-1)	980-1 628 (700-1)	980-1 3/4 628 (700-1 3/4)	1160-2 1/2 808 (900-2 1/2)



NE-1, 04 SEP 2025 to 02 OCT 2025

NE-1, 04 SEP 2025 to 02 OCT 2025